

R E P O R T	TO	MAYOR AND COUNCILLORS
	FROM	MANAGER: PLANNING AND ENVIRONMENTAL SERVICES
	FILE REF	REF: 425455
	DATE	2 AUGUST 2008
	SUBJECT	MONTHLY MONITORING REPORT – JULY 2008

RECOMMENDATION

THAT the report be received.

AND THAT Council appoint Warranted Police Officers as Enforcement Officers under the Hauraki District Council Consolidated Bylaw Part 3 (Public Safety) section 2.2.1 (g).

INTRODUCTION

This period has seen the LTCCP work programme gaining momentum to progress on to the initial development of the draft 2009 – 2019 LTCCP. The District Plan review workshops have been continuing and it has also been a particularly busy period with dog registrations.

DISTRICT PLAN

Proposed Eastern Layback – Newmont Waihi Gold

The proposed Eastern Layback is still being assessed by the Company.

District Plan Review

The District Plan Committee Workshop was held on the 11 August reviewing the Urban Zones Policy Directions; and the Reserve, Township and Residential Zones of the District Plan. The Committee will be looking at the Industrial Zone in more depth at the next workshop.

NEWMONT WAIHI GOLD

South Wall Stability Cutback - Martha Pit

Attached for the information of Council is a copy of the Pit Stability Cutback Reports for the months ending 30 June, 2008 and 31 July, 2008.

As at 31 July, 2008 3 million BCM's had been excavated which represents 67% of the total project.

The issue of the Letters of Credit and how many remain outstanding has been resolved as detailed in the NWG Cutback Report for the period ending 30 June 2008. At present we have agreed that there are two (2) Letters of Credit outstanding. The penultimate Letter of Credit is

due to be released in September and the final Letter of Credit will be released in March or April of 2009.

Annual Work Programme – 2008/09

As required by the Martha Mine Mining Licence and the Favona Mine Mining Permit (and incorporated into the respective consents for these operations) the company has submitted its annual work programme for both sites.

This work programme is submitted to the consent authorities, the Ministry of Economic Development, the Department of Occupational Safety and Health and the Mine Peer Reviewers.

The works programme details the expected work to be undertaken under the various permits and consents during the 2008/09 year and detailing the equipment to be used, details such the use of stockpiles, surface water treatment, rehabilitation, how compliance is expected with consent conditions, work expected in the waste disposal area and details relating to the actual mining methods and extent and direction of mining.

The report only covers the expected works and does not in any way address any exception circumstances that may be encountered. These are dealt with on a case by case basis.

For the interest of Councillors I have attached the figures from the report as they relate to the Favona underground mine stopping at the various stages expected during the 2008/09 year.

The colours are not significant except they show the stoping progression.

Quarterly Vibration Monitoring Report – April to June 2008

We are in receipt of the above report.

Detailed below are the summary conclusions from the report:-

- 100% compliance was achieved at the Martha operation during the second quarter of 2008. The 12 month rolling average was 96.4% compliant as at 30 June, 2008
- 98.9% compliance was achieved at Favona during the second quarter of 2008.
- The 12 month rolling average was 98.2% compliant as 30 June 2008.
- Vibration complaints relating to the Martha operation decreased during the second quarter of 2008.
- Seven (7) Martha open pit blasts resulted in vibration complaints. Nine (9) Favona blasts resulted in vibration complaints.
- Two (2) vibration exceedances occurred at Favona – these were investigated and reported to Hauraki District Council.
- The number of blasts decreased during the second quarter of 2008.

Quarterly Noise Monitoring Report – April to June 2008

We are in receipt of the above report.

A summary of the conclusions from the report are as follows:-

- No corrected noise level reading was above consent limits during neutral meteorological conditions.
- Twenty (20) readings over the limit were recorded during unfavourable meteorological conditions.
- Thirteen (13) noise complaints were received during the quarter.

- The majority of complaints were from one (1) resident.
- Noise monitoring readings are taken at the southern stability cutback, the mill, Favona and on drilling exploration sites.
- In total 160 separate noise monitoring readings were taken over the four sites.

Six Monthly Complaints Report

NWG submit a six monthly report which details a summary of all complaints received and dealt with over their entire operation, not just the operational consents. In some ways it duplicates the noise and vibration monitoring reports.

There are no matters of concern arising from the report.

Review of Blasting Vibration Levels

NWG has had a peer review undertaken of blasting vibration levels at the Favona mine for stope blasting as recorded at the Boyd Road monitor for the first six (6) months of 2008.

The Boyd Road monitor is the one closest to residential dwellings.

The conclusions from the review are:-

- During the period there were 94 stope blasts recorded with a vibration level of .75mm/s (the vibration limit being 6mm/s). This result is to be expected as all stope blasts were expected to exceed the .75mm/s trigger threshold value.
- The average level of vibration is 3.0mm/s.
- The average vibration levels are somewhere between ½ and 2/3rds of the consent compliance limit.
- There has been a noticeable decline in vibration levels during the period April – June 2008.
- There has not been an exceedance since 20 March, 2008.
- The reviewer concludes that the increased scrutiny, improved understanding of the geology and the modelling of vibration have all assisted in controlling the level of vibration from stoping operations.

The review conclusions are consistent with the monitoring conclusions being drawn by Hauraki District Council Staff.

Possible Variation to Martha Consent

The current Martha consent was issued by Council in the last 1990's and has largely achieved what was required of it by both the company and the Council.

However, there are a number of conditions within the consent where changes could be made to reflect the current practices or current reporting methodologies. In particular, a number of the consent conditions composed were unable to be implemented because of changing circumstances or different approaches in the marketplace.

Also, reporting techniques and methodologies have improved to the point where these could be codified through a consent Variation.

No change to any condition relating to effects is being considered.

These discussions are ongoing but do expect an application to be lodged in the near future.

Transpower – Planning for the Future

Transpower has announced a long term strategic planning exercise called Transmission 2040.

This has been established to address the longer term issues of transmission lines and grids, security of supply etc. Its stated objective is;

To form a long term National Grid development strategy taking into account New Zealand's future social, environmental and economic requirements and long-term technology trends.

The project is detailed as:

- *The GDS sets the direction for Transpower's transmission investment for the next 30-40 years.*
- *Our current GDS is now over five years old, and no longer reflects the latest information such as technology advances, demand/generation trends or the Government's New Zealand Energy Strategy.*
- *Transpower is inviting input from key stakeholders on the formation of the next GDS – to be known as "Transmission 2040".*
- *2040 has been chosen as a snapshot year, with the planning assumptions actually running to about 2050.*

Transpower has divided the larger project into 12 work programmes and invited interested parties to register to participate in these programmes.

Given that a second 400kva line from the South to Auckland, and passing through the District, is a viable option for the future we have registered our interest in taking part in a number of the work programmes relating to the grid and supply options.

DEVELOPMENT

Development Table – to 31 July, 2008

Consents Issued	2006/07	2007/08	2008/09	Year to date
Building Consents	38	28	82	248%
Subdivisions	9	11	15	150%
Land Use	7	4	7	140%
Designations	-	-	3	300%
Variations	5	4	2	40%
	21	19	27	135%
LIM's	38	28	18	55%

Consents issued for this period has increased development from the same period in previous years and it is also supported by ongoing development with the number of subdivisions and the number of new dwellings as indicated below:

Figures for New Dwellings over the last three years are:

- 2005/6 119 Total
- 2006/7 164 Tot
- 2007/8 165 Total
- 2008/09 15 YTD (9.8%)

The only development figure that reflects the current economic climate is the number of LIM's that have been applied for which are at 55% of the previous years figure.

PLANNING IMPLEMENTATION

The Hearings Committee met on the 21 August to look at two residential subdivisions located in Whiritoa and Karangahake and to consider two waiver applications to the Fencing of Swimming Pools Act.

We are currently producing the RMA statistics report based on the 2007/2008 year, which is required for the Ministry for the Environment (MFE) RMA biannual Survey of Local Authorities which will be released by MFE to the public once all the territorial authority information has been collated.

Paeroa Promotions Society – Annual Street Motorcycle Racing

The Resource Consent application for this event is now being processed by Council, and it is now at the public notification stage for this application. The submission period closes on the 12 September 2008, where it will proceed to the decision stage.

BUILDING ACT, 2004

The vetting of building consent applications at lodgement stage has commenced and some applications have been rejected due to inadequate information. This should reduce the level of suspensions a consent application will occur and it will improve overall processing efficiency.

IANZ have indicated to Council that the Phase 2 assessments will commence from February 2009 and this will include a full technical assessment of our Building Consent Authority.

Processing

There was an increase in the number of building consents processed compared to the same period in the previous year and the number of new dwellings issued also had a slight increase.

79% of those consents were processed with in the statutory time required of 20 working days, compared to 95% processed within the time required in the previous year, this will be indicative of the larger number of consents processed within the same period.

GENERAL

Enforcement of HDC Consolidated Bylaw Part 3: (Public Safety)

Recently when looking at our HDC Consolidated Bylaw Part 3: (Public Safety) in relation to skateboards causing a nuisance to any person in a public place, under 2.2 Prohibited Conduct in Public Places, section 2.2.1 of the bylaw in subsection (g) it states:

No person shall in any public place:

- g) *play any game or use any object including skateboards, roller blades, roller skates, bicycles or motorised scooters, recklessly or in a manner which may intimidate, be dangerous or injurious or cause a nuisance to any person in the public place, or damage the public place;*

We were always of the understanding that the definition of Enforcement Officer for the Bylaws included the Police, however this is not as clear as it could be.

In Part 1: (Introduction) of the HDC Consolidated Bylaw states under the definition of enforcement officer it states that:

ENFORCEMENT OFFICER means a person appointed by the Council to exercise the powers of an enforcement officer in relation to offences against, and infringement offences under the Local Government Act 2002, including enforcement of this Bylaw of the Council and a member of the Police.

In order to clarify the Police position on this matter and to put the matter beyond reasonable doubt, I have recommended to Council pass a resolution that will appoint warranted police officers as enforcement officers in terms of the HDC Consolidated Bylaw for the purposes enforcing the bylaw as it relates to skateboards causing a nuisance in a public place.

With the recent mail out of the Dog Registration application forms to all known dog owners for the registration period beginning this month, as at 31 July we have 87% of all known dogs registered.

STRATEGIC PLANNING

Current Projects

Long Term Council Community Plan 2009-19

Since the July Council meeting the following LTCCP workshops have occurred:

- Workshop papers and resolution on the council meeting of 16 August.
Topics covered included:
 - The Right Debate
 - Final population projections
 - General and financial assumptions
 - Final report on Levels of Service review
 - Approach to sustainability
 - Sustainability tuner
 - Walk the Talk approach
 - Layout for Groups of Activities and Activities
 - Information magnet
- Workshop for continuing work on the Revenue and Finance review

Staff now has sufficient guidance and direction from Council to proceed on the development of the draft 2009 – 19 LTCCP. For the next two months the workshop focus will be on the review of Financial Policies and drafting of initial estimates and capital works programmes.

Attached is a copy of the current workshop programme. This details work completed and work programmed.

Regional Policy Statements Review

No further meetings of the reference group have occurred as, at present, background research and policy development is being undertaken by Regional staff and their advisors.

Local Governance Statement 2008

The first Local Governance Statement was available to the public on 31st December 2003. Thereafter, Council has committed to reviewing the statement within six months of each triennial election. Council staff also have a programme in place to update the Local Governance Statement by August and February of every year.

The Local Governance Statement has therefore been reviewed internally by staff and the Chief Executive with some minor amendments being made. These amendments are to the Organisational Structure, Development Contributions explanation, Electoral Systems and document review dates.

The newly reviewed Local Governance Statement is now available online, and on the intranet.

Levels of Service Review

The Levels of Service Review was delivered to Management on 5th August and Asset Managers on 14th August. Councillors were presented with their summary document at Councils meeting of 13th August.

Asset Managers are now considering the results of the review as they relate to their asset responsibilities and will bring forward any suggested alterations to levels of service as part of the estimates consideration.

Performance Measures

A project brief for the review of asset and activity performance measures, monitoring and reporting is currently being drafted. The project is due to start in late August and completed by early November.

This is an area where Audit has signalled to the local government sector that it would like to see further developments in monitoring and reporting methodologies.

Ministerial Workshop – Sustainability

For a number of weeks, Katy Hurd has been in discussion with the Ministry of Environment seeking help on the inclusion of sustainability into Asset Management Plans. This has concluded with an MFE facilitated workshop to be held at HDC Council offices on 3 September.

The seminar is primarily for asset managers and management and we have invited staff from all neighbouring authorities to attend.

This is an excellent initiative by Katy which I hope will result in a better understanding of the sustainability concept and asset development and operation.

Sustainability

During Councils meeting on the 13th August a number of sustainability issues were presented and discussed. In essence this has given the strategic planning department the mandate to continue with the sustainability themeing and formatting of the LTCCP, with some additional work arising.

Earth Hour

Staff are currently looking into the possibility of recommending to Council that it participates in the Earth Hour partner's project run by World Wildlife Fund (WWF). In order to do this Council's role would be to engage with all sectors of our community, encouraging them to turn off their lights between 8-9pm on Saturday 28th March 2009. Additional information will follow, seeking Council's approval on the matter.

Population Projections and General and Financial Assumptions

During Council's meeting on the 13th August the draft version of the financial and general assumptions were adopted, and a population projection agreed. Some additional work will be needed with regards to financial assumptions in order to tie in with the BERL updates. These assumptions have now been distributed to the asset and activity managers for incorporation into their asset plans.

Consultation

Current Consultation

No current statutory consultation processes apply at present.

CUSTOMER SERVICES TEAM

The Contact Centre had 5165 calls offered. The Service level was 82.17% (Target: 80%) and abandonment rate was 5.03% (target <6%), exceeding their Service Delivery targets.

On Wednesday 30 July the team was offered 380 calls largely as a result of the storm conditions. Communication was also an issue, with the Vodafone network going down which impacted on our ability to communicate with staff in the field. My thanks to the team for their committed effort on this day. The availability of access to the queue from Ngatea and Waihi was apparent on this day, with staff living in Waihi unable to travel to Paeroa to work being able to go to Waihi Service Centre and continue "business as usual." The support from the staff located in Ngatea was invaluable.

The Customer Services Manager has participated in a "debrief" after the event, looking at ways we can improve our service to our customers in events of this nature. The three main issues for Customer Services were staffing, communication with field staff and lack of information about local roads. The Transit New Zealand website was used for information about state highways.

The July team meeting focussed on Rates training with a view to ensuring the team were "up to speed" for the New Rating year. Front of house displays had been created relating to rates and this was presented to the team, supported by training from Barry O'Neil.

Work is continuing to enable us to become a Registered Training workplace for the National Certificate in Contact Centre Operations, with us working through minor teething issues around contract variations with ETITO.

The team continues to receive higher than normal levels of refuse enquiries and complaints relating to the new refuse system.

As of 31 July, the official "last day" for Dog registration it appeared that we had registered 87% of the known dogs in the District. The process for payment by Internet Banking has run better than last year but still required refinement, particularly in educating our dog owners to return their signed dog registration declaration forms to us as well as the payment.

Rate Rebate Applications will again be managed via appointment and Outlook calendars have been established per site to manage the appointment process. Staff will be rostered "week

about” in all three Service Centres to manage the applications from the end of September. The bulk of the applications for the new rating year can be completed before the “last day of rates” for Instalment one, 29th October 2008. Councillors are welcome to encourage low income earners to contact customer services to make an appointment time.

Peter Thom
Manager: Planning and Environmental Services.

○

MONITORING REPORT

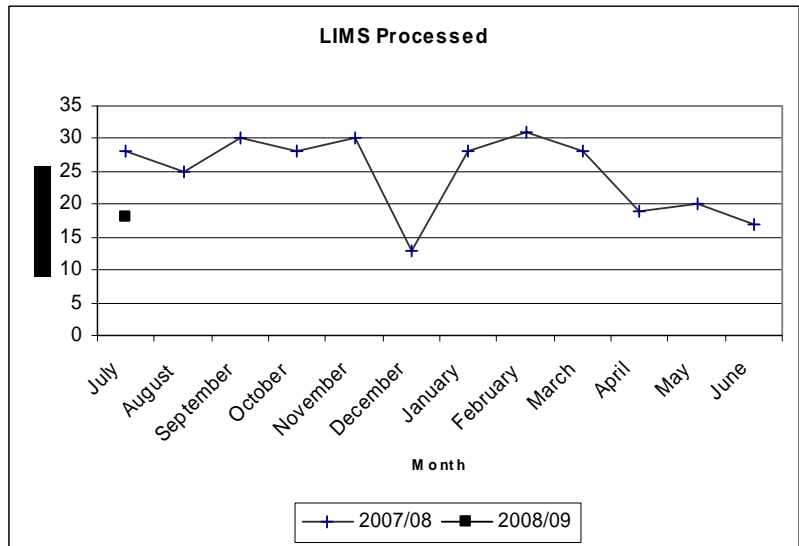
<p>Publication of the Annual Report <i>That the Annual Report is completed, audited and adopted by Council by 31st October, each year.</i></p>	<p>The Annual Report for 2006/07 was adopted by Council on 31 October, 2007.</p>																																																								
<p>Publication of the 2008/09 Annual Plan <i>That the Annual Plan is adopted by 30 June, 2008.</i></p>	<p>The Plan was adopted on 11 June, 2008 which included amendment 1 to the 2006 – 16 LTCCP.</p>																																																								
<p>Special Consultative Procedure <i>That all issues subject to a special consultative procedure meet the requirements of the Local Government Act, 2002.</i></p>	<p>To date the Gambling Policy, the Sale of Liquor Policy, Development Contributions Policy and Phase 1, 2 and 3 of the Consolidated bylaw have all complied with the appropriate requirements of the LGA.</p>																																																								
	<p>Resource Consents & LIM's</p>																																																								
<p>Target</p>	<p>Progress towards success</p>																																																								
<p>All notified resource consents applications are decided and issued within statutory timeframes. <i>99% of all notified resource consent applications are decided and issued within 70 working days.</i></p>	<p>1 Jul 2008 to 31 July 2008</p> <p>Notified Consents to the end of July 2008.</p> <p>In time Out of time -</p>																																																								
<p>All non-notified resource consent applications are decided and issued within statutory timeframes. <i>All non-notified consent decisions, not requiring a hearing, are issued within 20 working days.</i></p>	<p>1 Jul 2008 to 31 July 2008.</p> <table border="0" style="width: 100%;"> <tr> <td>Total</td> <td style="text-align: right;">22</td> <td>In Time</td> <td style="text-align: right;">10</td> <td style="text-align: right;">45%</td> <td>Out of time</td> <td style="text-align: right;">12</td> <td style="text-align: right;">55%</td> </tr> <tr> <td>Land Use</td> <td style="text-align: right;">7</td> <td>In Time</td> <td style="text-align: right;">2</td> <td style="text-align: right;">29%</td> <td>Out of time</td> <td style="text-align: right;">5</td> <td style="text-align: right;">71%</td> </tr> <tr> <td>Subdivision</td> <td style="text-align: right;">15</td> <td>In Time</td> <td style="text-align: right;">8</td> <td style="text-align: right;">53%</td> <td>Out of time</td> <td style="text-align: right;">7</td> <td style="text-align: right;">47%</td> </tr> <tr> <td>Misc/Desig's</td> <td style="text-align: right;">3</td> <td>In Time</td> <td style="text-align: right;">3</td> <td style="text-align: right;">100%</td> <td>Out of time</td> <td style="text-align: right;">-</td> <td style="text-align: right;">-%</td> </tr> <tr> <td>Other</td> <td></td> <td></td> <td></td> <td></td> <td></td> <td></td> <td></td> </tr> <tr> <td>Variations</td> <td style="text-align: right;">2</td> <td>In Time</td> <td style="text-align: right;">-</td> <td style="text-align: right;">-%</td> <td>Out of time</td> <td style="text-align: right;">2</td> <td style="text-align: right;">100%</td> </tr> <tr> <td>Objections</td> <td style="text-align: right;">1</td> <td>In Time</td> <td style="text-align: right;">1</td> <td style="text-align: right;">100%</td> <td>Out of time</td> <td style="text-align: right;">-</td> <td style="text-align: right;">-%</td> </tr> </table>	Total	22	In Time	10	45%	Out of time	12	55%	Land Use	7	In Time	2	29%	Out of time	5	71%	Subdivision	15	In Time	8	53%	Out of time	7	47%	Misc/Desig's	3	In Time	3	100%	Out of time	-	-%	Other								Variations	2	In Time	-	-%	Out of time	2	100%	Objections	1	In Time	1	100%	Out of time	-	-%
Total	22	In Time	10	45%	Out of time	12	55%																																																		
Land Use	7	In Time	2	29%	Out of time	5	71%																																																		
Subdivision	15	In Time	8	53%	Out of time	7	47%																																																		
Misc/Desig's	3	In Time	3	100%	Out of time	-	-%																																																		
Other																																																									
Variations	2	In Time	-	-%	Out of time	2	100%																																																		
Objections	1	In Time	1	100%	Out of time	-	-%																																																		

All LIM's are issued within statutory timeframes

All LIM's are issued within 10 working days.

	Jul-07	YTD 2007/08	Jul-08	YTD 2008/09
No. of LIMs	28	28	18	18
% in time	100%			
LIMs by Ward				
Paeroa		6		8
Waihi		12		4
Plains		10		6
TOTAL		28		18

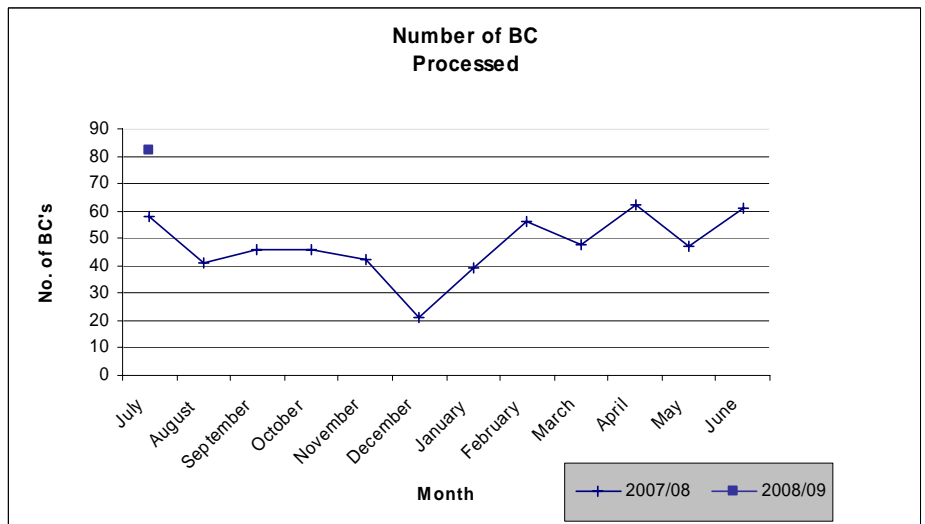
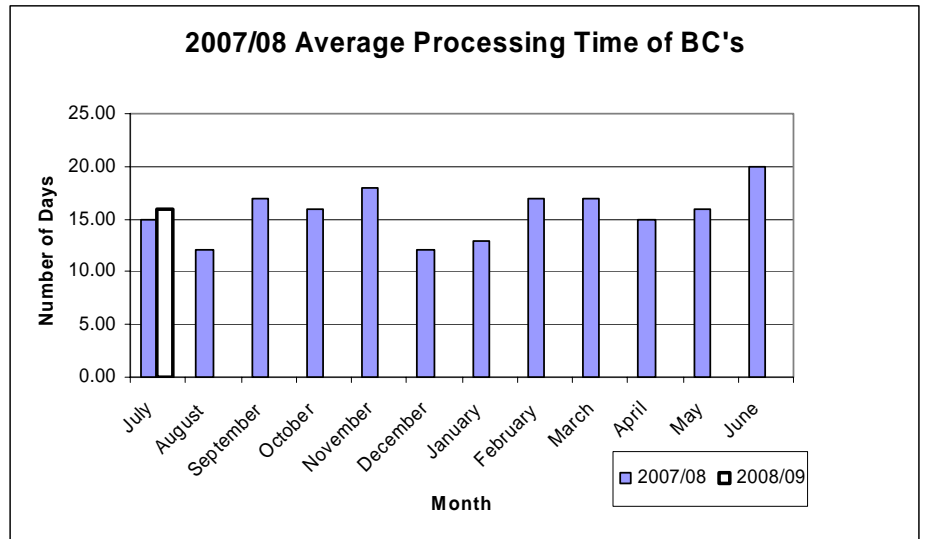
	# LIMs 2007/08	%in time 2007/08	Avg Processing	# LIMs 2008/09	%in time 2008/09	% Overtime	Avg Processing
July	28	100%	3.36	18		0%	
August	25	100%	3.88				
September	30	100%	3.97				
October	28	93%	6.07				
November	30	100%	5.17				
December	13	92%	3.85				
January	28	96%	3.43				
February	31	93%	6.26				
March	28	89%	7.36				
April	19	100%	5.84				
May	20	80%	8.25				
June	17	77%	7.53				
TOTAL	297	93%	5.41				

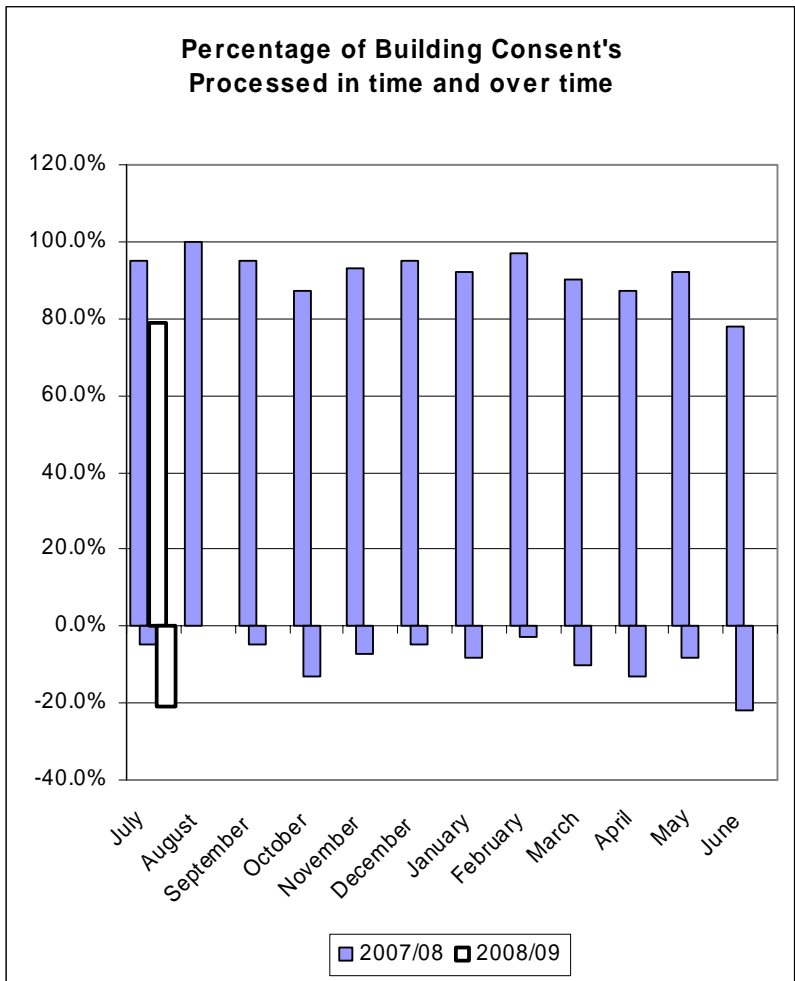


Issue building consents within statutory timeframes.

- 100% of all building consents are issued within statutory timeframes
- 20 working days

	Jul-07	YTD 2007/08	Jul-08	YTD 2008/09
No. of Consents	58	58	82	82
% in time	95%		79%	
New Houses				
Paeroa		2		2
Waihi		10		10
Plains		0		3
TOTAL		12		15





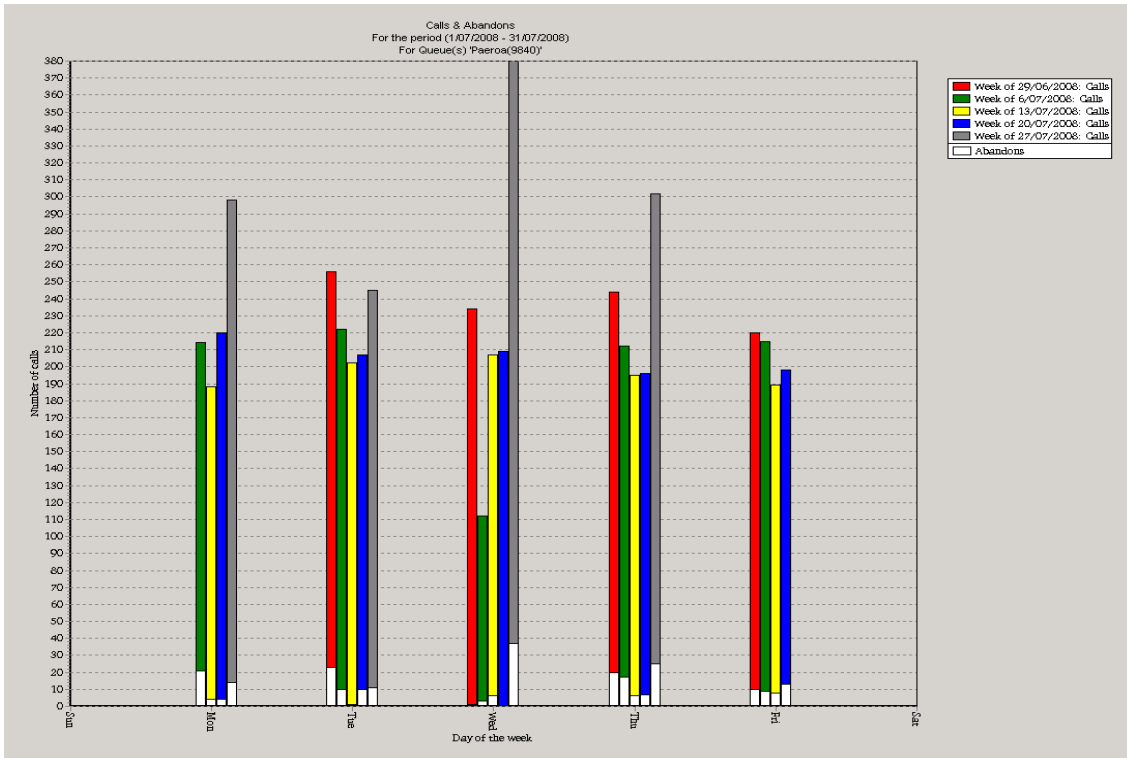
Dog Statistics - 2008/09

Final Dog figures for year ending 30 June 2009

Re Registered:	3205
New Registered:	333
Registered:	3538
Destroyed:	5
Died:	199
Lost:	0
Transferred	156
Not Registered:	533

Customer Services Team – Contact Centre

Summary of Calls 1/07/08 – 31/07/08



Service Levels 01/07/08 – 31/07/08

