

Key Community Issues

Netherton School's Worm Farm

Netherton School is a small school with a big heart for the community and a love for this country. We realised that, although we are a small school, we can still make a difference with environmental problems and we decided to become an enviro school. It's obvious before you even enter the grounds, with no rubbish to be seen anywhere, it's all in the bins. To reduce the amount of rubbish we produce we decided to separate the rubbish into two lots - recyclable and non recyclable. Then we placed the rubbish into separate wheelie bins (two different colours to prevent them from getting mixed up) but just dealing with our rubbish wasn't enough. We wanted to do something about our food scraps as well.

One class researched worm farming at Hamilton Gardens and soon we had purchased two buckets for each room (a red one for the pig food and a yellow one for the worm food), a "Can-o-worms" container (that's made from 100% recycled plastic) and 1000 tiger worms.

We chose tiger worms for our worm farm because they are the only species of worm that eat the scraps before it turns to compost. The Tiger worms in turn produce "worm juice" which is full of nutrients that plants need. We give the "worm juice" to our school plants to give them a boost.

We have two people as "worm monitors" and it is their job to care for the worms and collect the "worm juice". They also report back anything they find that should not be in the bucket containing the scraps for the worms.

The worm farm has been a great success. The worms are breeding like crazy and producing around two jam jars of "worm juice" a week. We also have a lot of very happy and healthy plants in the school, plus the worm monitors love their job.

Netherton School continues to reduce, re-use and recycle.

Lucy Knight
Netherton Primary School

*Hauraki Youth promoting
Sustainability in Hauraki*

*Story provided by:
Lucy Knight, Netherton Primary School*

What topics are covered in this section?

Sustainability – The right approach for Hauraki District

Climate Change - The right approach for Hauraki District

The Changing Demographics of Hauraki District

Capital Works Projects - District

- Rooding
- Water
- Wastewater
- Land Drainage
- Stormwater
- Solid Waste
- Community Services

Community Projects – Paeroa Ward

Community Projects – Waihi Ward

Community Projects – Plains Ward

Key Community Issues

Key Community Issues - Introduction

Key Community Issues - Introduction

Key Community Issues

Summary of Consultation

A key part of the consultation on the Draft Hauraki Community Plan 2009-19 was the consultation on the three Right Debate issues.

Council had identified three key areas of debate that Elected Members felt were the most important strategic issues facing the District in the medium-long term. These topics were:

- Sustainability – The right approach for Hauraki District
- Climate Change - The right approach for Hauraki District
- The Changing Demographics of Hauraki District

In order to gauge the community views on these issues Council provided three sets of discussions including questions which Council asked the community to consider. The discussions covered relevant information to the District along with some key assumptions regarding what is to what is to be anticipated regarding them.

In developing these discussions Council had developed its own preferred options and the reasoning behind its choices for input during the consultation.

In total there were 75 submissions to the Hauraki Community Plan, of which 33 addressed one or more of the 'right debate topics' in their response. This is a 45% response rate for the people submitting to the Plan.

The submission process resulted in 88 submission points received covering the three topics. 31 were on the Sustainability topic; 31 on Climate Change and 26 on the Changing Demographics of the District.

To receive this number of submissions was pleasing for Council and gave sound valuable feedback to assist in the direction decided on following the consideration of submissions.

The decision made on each topic is summarised in the following pages.

Capital Works Projects and Community Projects

The second half of this Key Community Issues section covers the capital works programmed by Council during the ten year life of this Plan.

Projects included in this section are discussed in detail within each of the relevant Activities which can be found commencing on page 139.

The capital works have been split into two categories:

- District Rate funded projects
- Projects with some Ward Rate funding for each of the Wards

Key Community Issues

Sustainability – The right approach for Hauraki District

Sustainability – the right approach for Hauraki District

Introduction

For a number of years Local Government has had legislative requirements to promote sustainable development principles. The Local Government Act 2002 for example is the key legislation which states that Council must take a sustainable development approach when making decisions, and Council is required when making decisions to:

- ensure that the cultural, economic, and social well-beings of people and communities have been taken into consideration, and
- take into consideration the need to maintain and enhance the quality of the environment, and
- take into account the reasonably foreseeable needs of future generations.

Council is committed to achieving a sustainable Hauraki District, so that not only the current community can appreciate and enjoy the resources and services in the District, but our future generations can continue to have that opportunity to do so. In order to help Council achieve a balanced, sustainable position regarding the future of Hauraki District, Council sought the views of the community as to how we can best balance the economic, environmental, social and cultural well-beings of the Hauraki community.

Sustainability – The Story So Far

Globally

At a global level the overarching sustainable message is environmental with increased concern that on-going and irreparable harm is being done to the environment (essentially resulting in the climate change issues). Countries on a mass scale are signing up to response plans to change their habits. Supporting this global movement are a number of legislative measures.

Examples of these are:

- The introduction of carbon trading schemes.
- Pollution reduction targets.
- Protection of endangered species and habitats.
- Restrictions on nuclear power.
- A focus on renewable energy.

Socially, governments and large non-governmental organisations are helping communities to live sustainable lives. The focus of money and resources donated by people is now on assisting impoverished

nations/communities to cope for themselves (e.g. building schools, buying seeds, digging wells) rather than one-off donations of food or clothing. The message coming across is that if you give people the means to take care of themselves, then ongoing financial support will eventually not be necessary.

On the global financial stage the message is more subtle. A large number of developed countries are now suffering from the consequences of decades of unsustainable financial management, resulting in recessionary outcomes, financial hardship, loss of employment and a reduction in quality of life for millions of people. As a result, countries are now: collaborating, reviewing global risks, planning and managing their financial resources. Much greater emphasis is being put on labour agreements and borrowing capacity.

At a global level there has been a large movement in achieving culturally and socially acceptable behaviour. Cultural and heritage icons are being protected and restored, and respect and support for indigenous populations is being encouraged. It is no longer acceptable

Key Community Issues

Sustainability – The right approach for Hauraki District

to take part in racial, cultural or religious discrimination or religious oppression, and human rights are increasing as a result.

Nationally

The Government has been introducing sustainable targets over the past six years in response to a number of factors; such as the ratification of the Kyoto Protocol in 2002, extreme weather events seen throughout New Zealand, the price of oil, societal trends, human rights, current and expected population projections, financial planning for the future and increased energy production concerns.

Over the summer of 2007/08 a number of national campaigns were launched to encourage people to reduce their energy consumption. This was in response to the pressure that droughts had brought on the hydro-electric power stations feeding the national grid, and an attempt to avert an energy crisis during the winter of 2008, and at the same time lessen the use of fossil fuel power generation. This initiative has economic, environmental and social benefits.

The main outcomes that Central Government is working towards in the environmental arena are:

- New Zealand's air, water, land and built communities are healthy.
- New Zealand is able to capitalise on its natural environmental advantages.
- New Zealand's natural resources are managed effectively and New Zealanders are encouraged to use resources sustainably.
- Risks to people, the economy and the environment from pollution, contamination and other environmental hazards are minimised.

It is doing this by providing leadership on environmental sustainability across Central and Local Government and the community. It is fostering working in partnership with others in Central and Local Government, businesses and the community to improve the environment and encourage sustainable practices; it is fixing problems that require Central Government intervention and measurement and reporting on the health of the environment.

Central Government has also been working on social targets, through National Strategies. The philosophy is to help to build successful individuals, and in turn build strong, healthy families and communities (a sustainable principle). Key issues in society that are being addressed at a national level are;

- Family violence and youth offending.
- Care and protection of vulnerable children and young people.
- Employment, income support and superannuation services.
- Funding to community service providers.
- Social policy and advice to government, student allowances and loans.
- Encouraging diversity.

Culturally the Government funds and is involved in:

- National heritage
- Arts
- Broadcasting
- Sports and recreation
- National Museum

Central Government contributes to cultural well-being in a variety of different ways. Its contribution can be seen through the provision of guidelines, published research reports and papers, funding for projects, sponsorship or as active partners in projects.

Nationally economic sustainability is worked towards by examples such as:

- Promoting the country as a place to live.
- Providing resources to businesses; helping innovative ideas by providing financial help.
- International trade is a large aspect of keeping the country financially sustainable, and this is developed through the Ministry of Economic Development.
- Initiatives such as Kiwi Saver, the national superannuation fund.

Key Community Issues

Sustainability – The right approach for Hauraki District

Locally

The majority of Council activities are naturally sustainable, as decisions are made taking into consideration the four well-beings and the future needs of the Hauraki District. Assumptions are used to plan for population increases, and financial measures are taken in order to spread the cost of running Council's activities across the generations that use them.

Environmentally Council has, over the past few years, made key sustainable improvements to the District through the likes of:

- Kerbside recycling scheme.
- Increasing the standard of new wastewater treatment plants.
- Stronger sustainable principles likely to be embedded into the reviewed District Plan.
- Implementation of building codes, in relation to safety, insulation and double glazing.
- District Plan protection of ecologically significant areas.
- Consideration of the four well-beings when making decisions.
- Stormwater retention ponds.

Socially Council has been working on the targets set by the collaboratively owned Community Outcomes to create a sustainable Hauraki District and has been involved in the following:

- Consideration of the four well-beings when making decisions.
- A collaborative response to youth issues in Hauraki District through the Better Futures Hauraki Forum.
- Introduction of the Contestable Social Fund to help attain identified community outcomes.
- A number of additional grants and subsidies to social organisations.
- Formation of a Positive Ageing Strategy and Youth Policy.
- Investment in street lighting and footpaths to improve safety.

Economically Council helps build a sustainable community by way of:

- Intergenerational equity through revenue and financing policies (spreading the cost between those currently using resources and those likely to be using them in the future).
- Funding depreciation in order to plan asset replacement in the future (a form of ongoing user pays).
- Collaborative approaches to District Promotion and tourism initiatives.
- Collaborative development of a labour market strategy.
- Development of industrial and residential subdivisions.

Culturally Council is involved with:

- Funding of information centres and museums.
- Providing funds to cultural groups.
- Protecting heritage sites, significant trees and culturally significant areas through the District.
- Building conditions and restrictions on retrofitting.
- Memorandum of partnership agreements with local Iwi.

When making decisions Council takes into consideration the needs of future generations, and by doing so identifies any issues whether they be social, cultural, economic or environmental, in order to attempt to adapt or mitigate them for the future generations of Hauraki.

Throughout this document, Council has aimed to show how sustainability is currently embedded into Council activities throughout the organisation. 'Walk the Talk' boxes highlight this.

Key Community Issues

Sustainability – Options for Hauraki District – Your feedback sought

Options for Hauraki District – Your feedback sought

How Council will address sustainability and the four well-beings into the future.

In the past Council has predominantly implemented sustainability principles through legislative requirements and the identification of community outcomes, rather than as a matter of best practice. This approach has changed considerably since the passing of the Local Government Act 2002 and sustainability is now a core part of decision making.

Council asked for feedback on a series of options on sustainable approaches as part of the consultation process when drafting this Plan. In summary the options considered are listed below:

Hauraki Youth promoting Sustainability for Hauraki



*Alarna Sutton
Hauraki Plains College*

Options proposed

Options considered

Option A – Status quo

The status quo sustainable approach taken by Council is predominantly guided by the policy decisions of Central Government via the Local Government Act 2002 and the requirement to utilise sound decision making tools.

Option B – Changing the way the community acts – a soft approach

Council proposed putting a greater emphasis on sustainability in the community, which would enhance the Hauraki District by creating a better quality of life for the future, not only environmentally but socially, economically and culturally also.

Option C – Changing the way the community acts – an interventionist approach

Council would increase participation in sustainability initiatives and increase legislative enforcement to ensure compliance.

Key Community Issues

Sustainability – Options for Hauraki District – Your feedback sought

Consultation summary

During the submission process:

- 11 submissions were received in support of Option A
- 9 submissions were received in support of Option B
- 7 submissions were received in support of Option C
- 2 submitters also preferred a combination of B and C

Council recommendation

Prior to the consultation on *Sustainability – the right approach for Hauraki District*, Council's preferred option was Option B.

Council's preferred option

Council believes that the best choice for Hauraki District would be Option B and would support this approach alongside the status quo. Option B would show Council's continuing commitment to work with the community in an advocacy, leadership, and partnership role and with a best practice sustainable approach. It would focus on those areas where a direct benefit to the Hauraki District could be seen. It would seek to form partnerships where appropriate to supply the best resourced information to the community through education, and encourage the community to live as sustainably as possible whilst trying to 'walk the talk' itself. This option would continue and improve on the work that Council is already doing and would have a small impact on the rates of the District.

Council believes that for the community an enforced and regulatory approach as stated in Option C is best left to Regional and Central Governments that are resourced and able to monitor such compliance levels. It believes that Option C would be too confrontational and expensive for the community at this time. Central Government continues to hand over additional jobs/responsibilities to Local Government in the form of regulations through the likes of the Graffiti Act and more stringent building codes etc, already, and the emphasis on additional enforcements would be counter productive. Council is, however, interested in renewable energy, and would consider its approach to the likes of wind farms and other renewable energy sources as the need arises or through the review of the District Plan.

Due to the risk involved in hard legislative approaches Council would rather modify its standards to tried and tested scientific and social advances already practised by others in the legislative frameworks.

Council decision

Following the Hearings of Submissions, Council took into account the feedback provided by the community. Discussions held by Council agreed that although a policy stance would be adopted a clear policy or strategy needed considerable extra work.

Council therefore nominated a focus group comprising of four Councillors and the Mayor that will work with Council, staff and the community to present Council with the appropriate options for consideration. As a lead for this focus group the Council adopted its previously recommended option, Option B, which will provide the focus group with guidance on which direction to head. This focus group will also be taking into consideration the climate change and demographic options highlighted in the next two sections.

Key Community Issues

Climate Change – The right approach for Hauraki District

Climate Change – the right approach for Hauraki District

Introduction

Climate change is a very topical issue internationally, nationally and locally. There are numerous and wide ranging views on the subject of climate change from 'it is already occurring and will have dire consequences' to 'total denial' and the view that 'we are currently in a normal climatic cycle'.

Central Government has given Local Government a lead into the policy debate on climate change. This has been done by including in key legislation the need for Local Government to take into account the effects of climate change in its forward planning for communities either directly (for example the Resource Management Act 1991) or indirectly (through sustainable principles in the Local Government Act 2002).

Council has adopted policy stances for its view of the possible impacts on climate change. These stances were consulted as part of the consultation leading up to the adoption of this Plan.

What is climate change?

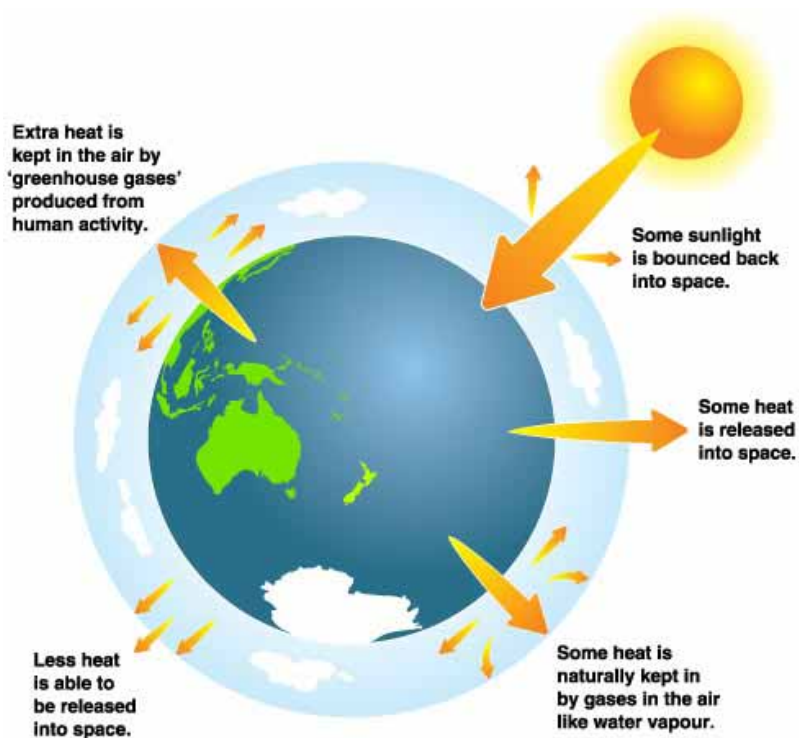
Greenhouse gases in our atmosphere help to regulate the temperature of the Planet, and create a climate which sustains all living organisms. It has been assumed over the centuries that there is a natural equilibrium and as damage to the natural environment occurs it will, over time, heal itself.

In more recent times however, activities that the community takes part in like driving cars, burning fossil fuels, animal husbandry, and cutting down forests have produced greenhouse gases (carbon dioxide, methane and nitrous oxide) and reduced carbon sinks to such an extent that the natural climate is changing more rapidly than has been seen historically. These gases, which become trapped in the Earth's atmosphere, have the effect of depleting the ozone in the atmosphere and creating a layer of gases that trap the sun's heat in a similar way to a glasshouse.

This picture shows how this warming of the earth creates the greenhouse effect.

Source:

www.climatechange.govt.nz



Key Community Issues

Climate Change – The right approach for Hauraki District

Globally

At a global level, the net result of climate change is believed to be reflected in changes such as:

- A gradual warming of the earth.
- Polar ice and glacial retreat.
- More frequent and intense storms.
- Increased drought.
- Rising sea levels.
- Changes in land uses as a result of a warming climate.

Nationally

Government research shows that New Zealand is already showing evidence of a changing climate. Meteorologists are seeing an increase in the severity of storms, rainfall, droughts and floods nation wide, and there are reports of glacial retreat in the South Island.

Current predictions suggest that the temperature in New Zealand is likely to increase by 1°C by around 2040, and about 2°C by 2090 (relative to 1990 temperatures). Mid-range rainfall scenarios are predicting a 5% decrease in the North and East by 2090, and for the South and West an increase of 10% by 2090.

Of major concern to New Zealand is the likelihood of increasingly extreme weather events. The frequency and intensity of heavy rainfall, storm and tidal surges, drought or very high temperatures for example, are all likely to increase, and an increase in average sea level is also expected of between 18-59 cm between the years of 1990 and 2100.

For more information on the projections for New Zealand please see 'Preparing for Climate Change' – A guide for local government in New Zealand, 2008, Ministry for the Environment or for example:

- <http://www.niwa.co.nz/ncc/clivar/scenarios#what>
- www.climatechange.govt.nz

Locally

Hauraki District is not likely to see any extensive changes in averages with regards to temperature or rainfall. However the extreme conditions associated with the effects of climate change are likely to have a significant impact on the Hauraki District. The likelihood of sea level rise seems inevitable, although it will happen at a pace which can be adapted to when the need arises.

For Hauraki District the issues for the community and Council which arise from climate change are, on the positive side:

- A more favourable climate for the tourist.
- Increased opportunities for crop diversification, and pastoral farming.
- Longer growing seasons.
- New forms of Land uses.

...however, on the negative side:

- Depreciation of land drainage and stormwater assets (arising from the increased usage).
- Changing water courses of rivers.
- Flooding to low-lying areas.
- Water quality issues – caused by salt water intrusion, sediment and depleted oxygen levels.
- Impacts on town facilities (for example shaded areas and drinking fountains).
- An increase of drought conditions and effect on water supplies.
- An increase of fire risks.
- Increased erosion, and/or landslips.
- Increased risk of tidal surges for the Hauraki Plains foreshore, rivers and canals.
- Bio-security risks arising from warmer weather (e.g. invasive plants and insects).

Key Community Issues

Climate Change – The right approach for Hauraki District

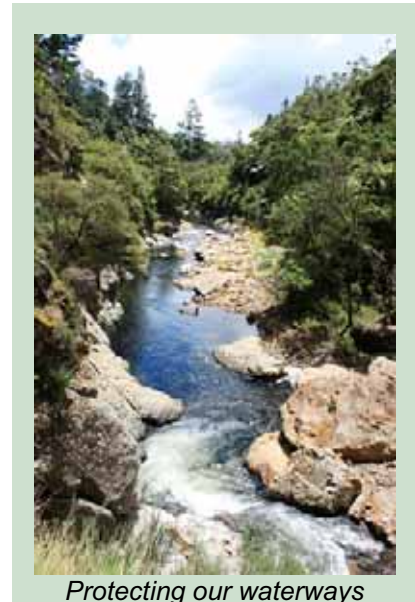
Is Hauraki District vulnerable to climate change?

Currently the Hauraki Plains enjoys flat, fertile soils largely used for dairy farming. Over earlier years however the Hauraki Plains had been transformed from damp lowland kahikatea forests which were able to absorb excessive rainfall and naturally flood, to a largely man-made environment. This environment is prone to flooding, and to minimise risk both Council and Environment Waikato armours the Hauraki Plains through an extensive system of stopbanks, floodgates, flood pumps, culverts and canals. The Hauraki Plains remain vulnerable, and intervention will always be needed to avoid catastrophic flooding.

There are two significant river systems that run through the Hauraki District. These are the Waihou and Piako Rivers and their tributaries (including the Ohinemuri River). Future increases in extreme weather events are likely to put pressure on these systems by changing the rivers course and deepening the channels through which the rivers run.

In addition to the risk from flooding, comes the risk from tidal and storm surges. For example, if the sea level were to rise, and if this rise were combined with a king tides, an extreme weather event and a storm surge, the impact would be more severe than in previous years when the sea level was lower. Therefore predicted changes to the climate will mean that these river systems are likely to come under increasing pressure, ensuring that man made intervention will continue to be necessary.

Although a significant portion of Hauraki District is close to sea level, there are also steep catchments associated with the Kaimai/Coromandel Ranges which are vulnerable to the changing climate, particularly extreme rainfall events. Whiritoa, Waihi, Mackaytown, Karangahake, Waikino and Paeroa are all vulnerable because of the catchments that surround them. They could also be vulnerable to prolonged drought conditions. These effects could see increasing erosion and falling production.



Protecting our waterways

What is the Government doing?

The Government is supporting and encouraging organisations and communities to engage in early planning, not only to be prepared for the effects of climate change but also to consider the way we do things to limit or mitigate potential damage. The immediate focus is on developing a pathway towards sustainability, and a large amount of the work in the climate change arena therefore is associated with sustainable solutions. An emissions trading policy, energy conservation and efficiency strategies and land use improvements are all examples of additional work that the government is involved with. A good source of information for further reading is www.climatechange.govt.nz

Ministries such as the Ministry for the Environment provide information, tools and guidance to help councils assess the risks of climate change, and nationally a number of strategies have been released in order to mitigate the effect in New Zealand by focusing on sectors which produce the majority of carbon emissions.

Mitigation of the causes of climate change is largely the role of Central Government, but adaptation and mitigation can be done by all members of the community, Local Government, and a number of larger organisations.

Key Community Issues

Climate Change – Options for Hauraki District – Your feedback sought

Options for Hauraki District - Your feedback sought

Discussion Point One – Effects on Infrastructure and Community Assets

Each region, district and community has its own climate-related vulnerabilities and priorities. Development of region-wide resilience requires partnerships between communities, industry groups, and Local Government. For Hauraki District, Environment Waikato is responsible for a majority of the flood and sea defences with the work being complimented by the Council's urban stormwater and rural land drainage assets. Civil defence issues are co-ordinated by the Thames Valley Civil Defence Strategy, which deals specifically with the likes of tsunami events, flooding, droughts and storm situations.

There are some legislative drivers for Council to ensure the consideration of climate change. The main driver is the Resource Management Act 1991, which for example requires the impact of climate change to be taken into consideration when developing District Plans, and granting resource consent for subdivision. In addition it is expected that new Regional Policy Statements will give some lead, but mainly in a regulatory guidance approach through the consents process, where mitigation of climate change effects will be a much higher priority.

As members of the community Council asked for your feedback on a series of options on

climate change approaches. In summary these options were as below:

Hauraki Youth promoting Sustainability for Hauraki



Class SB2
Paeroa Central School

Options to consider

Option 1A – A reactive approach

Council would only react to prescribed legislative drivers from Government. It would therefore continue with a 'business as usual' attitude.

Option 1B – An extensive research approach

Council could undertake its own research and scientific evaluation into the effects of Climate Change for Hauraki District. This would involve contracting scientists with the appropriate knowledge and capability to conduct the necessary scientific research.

Option 1C – A moderate and pro-active approach

Council would not only react to prescribed legislation by Government, but also pro-actively plan for climate change in the future, and adapt to projections or mitigate contributing factors.

Key Community Issues

Climate Change – Options for Hauraki District – Your feedback sought

Consultation summary

During the submission process:

- 7 submissions were received in support of Option 1A
- 5 submissions were received in support of Option 1B
- 13 submissions were received in support of Option 1C

Council recommendation

Prior to the consultation on *Climate Change – Options for Hauraki District*, Council's preferred option was Option 1C.

Council's preferred option

Council considers a moderate pro-active approach to be the sensible option for Hauraki District and therefore favours Option 1C. By allowing Central Government to take ownership of the issues, and therefore the associated research behind climate change predictions, Council is not duplicating the work already done. By identifying potential areas of risk for Hauraki District, and including assumptions into forward planning, Council can progressively adapt to a changing climate, and therefore reduce risk for its community. It will do this by working projections from Central Government into design specifications and asset management plans in order to adapt to the effects of climate change.

Council decision

Following the Hearings of Submissions, Council took into account the feedback provided by the community. The majority of submissions reflected Council's view; however Council is aware that the number of submissions received is only marginal in respect to the District's population. Council has therefore formed a focus group comprising of four Councillors and the Mayor who will work with Council staff and the community to develop further policy options.

In order to give this focus group some idea of direction Council adopted its preferred Option 1C.

Key Community Issues

Climate Change – Options for Hauraki District – Your feedback sought

Discussion Point Two – Government Guided Projections

To get some idea of what climate variations Hauraki District is likely to see, Council recently made some projections using data supplied by the Ministry for the Environment.

These calculations have been incorporated into Council's general assumptions within this plan. They are able to help the asset and activity managers make decisions for the community based on the most relevant and significant information in a consistent manner.

At the time Council were asked if they would like to use the low, medium or high projections (described in the table below). For the reasons discussed below they chose the medium.

Hauraki Youth promoting Sustainability for Hauraki



by Payton
 Our class went to Leache's Quarry landfill at Irongia. We learnt how wood chips from trees and our rubbish can all help to make soil by being munched together in a machine. It is the best rich soil to use for the garden. Rubbish can be re used and recycled into many things.
REDUCE-REUSE-RECYCLE

Payton Walter-Singh
 Paeroa Central School

Table below: Projections for Hauraki based on MFE Guidance 2008.

Climate Change	Projection by 2090 – Hauraki/Waikato		
	2A - Low	2B - Medium	2C - High
Temperature	That temperature will be likely to rise by 0.6°C as a mean average.	That temperature will be likely to rise by 2.1°C as a mean average.	That temperature will be likely to rise by 5.6°C as a mean average.
Rainfall	That there will likely be a decreased annual rainfall of: <ul style="list-style-type: none"> ▪ Plains: -126.5 mm ▪ Waihi: -319 mm ▪ Paeroa: -143 mm 	That there will likely be a decreased annual rainfall of: <ul style="list-style-type: none"> ▪ Plains: -10 mm ▪ Waihi: -30 mm ▪ Paeroa: -10 mm 	That there will likely be a increase annual rainfall of: <ul style="list-style-type: none"> ▪ Plains: +126.5 mm ▪ Waihi: +319 mm ▪ Paeroa: +143 mm
Rainfall intensity	Increase of up to 5%.	Increase of up to 20%.	Increase of up to 45%.
Sea level rise	Sea levels will be likely to rise by 0.18m.	Sea levels will be likely to rise by 0.5m.	Sea levels will be likely to rise by 0.80m.

Key Community Issues

Climate Change – Options for Hauraki District – Your feedback sought

As members of the community Council asked for your feedback on a series of options on climate change approaches. In summary these options were as below:

Options to consider

Option 2A - Low Projections

Option 2B - Medium (or average with regards to temperature rise)

Option 2C - High

Consultation summary

During the submission process:

- 7 submissions were received in support of Option 2A
- 12 submissions were received in support of Option 2B
- 4 submissions were received in support of Option 2C

Council recommendation

Prior to the consultation on *Climate Change – Options for Hauraki District*, Council's preferred option was Option 2B.

Council's preferred option

The government's midline climate projections -Option 2B- are the preferred option for Council as a prediction for climate change. Council does not have the resources or the expertise to analyse the thousands of possible climate change scenarios and models that are currently being developed.

Council believes that by taking advice and projections from Central Government who have the expertise and scientific background to propose approaches to climate change, there is significant risk reduction and undue costs will be averted. In addition to this Council believes that climate change is a national issue, and therefore recommends that the science is left to national agencies and research institutes. To date Council has used local government guidelines from the Ministry of the Environment and National Institute of National Water and Atmospheric Research (NIWA) to create the projections that are contained in this plan, and feel comfortable in the level of expertise provided by Ministry of the Environment in calculating them.

Council decision

Following the Hearings of Submissions, Council took into account the feedback provided by the community. There was little direct opposition to the stance Council had taken, and therefore the preferred Option 2B was chosen as Council's climate change projection, and adopted as an assumption in the Hauraki Community Plan 2009-19.

Disclaimer - Developing projections of future climate change is still subject to significant uncertainty. Although Council has used the guidelines produced by Ministry for the Environment there is still an element of risk involved with these projections. Ministry for the Environment has a disclaimer within its documentation which states "The authors have used the best available information in preparing the report on which this guide is based, and have interpreted this information exercising all reasonable skill and care. Nevertheless none of the organisations involved in this preparation accept any liability, whether direct, indirect arising out of the provision of information in this guide or course document". Council would like to state it also does not accept any liability whether direct or indirect arising from the provision of information for its district.

Key Community Issues

Climate Change – Options for Hauraki District – Your feedback sought

Discussion Point Three - Further Considerations

In addition to infrastructural and service risk assessment, there are also a number of opportunities for Council to have more involvement in one or more of the following roles: *Advocacy, Partnership and Leadership*. All of these options involve sustainable principles, and therefore link to the sustainability discussion following.

As members of the community Council asked for your feedback on these climate change approaches. In summary these options were as below:

Options to consider

Option 3A – No role

Leave the job of climate change education and mitigation to Central Government, Regional Councils, and the scientists. Respond reactively if climate change projections change by amending key documentation such as the District Plan and/or Construction Standards Manual etc, but refrain from additional roles.

Option 3B – Council role as a Service Provider and Community Advocate

Council's role would be identifying opportunities to advocate on behalf of the community and develop programmes and responses to the effects of climate change or its mitigation within Hauraki District. Council would keep the community informed of current climate change scenarios adopted. It would look at and consider the issue of climate change in the design and delivery of its services and play a role in education, advocacy and facilitation.

Option 3C – Active interventionist Council role

Council would take a strong advocacy role at a national level and commit significant budget and resources to respond to national climate change initiatives.

Consultation summary

During the submission process:

- 8 submissions were received in support of Option 3A
- 15 submissions were received in support of Option 3B
- 3 submissions were received in support of Option 3C

Key Community Issues

Climate Change – Options for Hauraki District – Your feedback sought

Council recommendation

Prior to the consultation on *Climate Change – Options for Hauraki District*, Council's preferred option was Option 3B.

Council's preferred option

Council believes that the best option for Hauraki District is Option 3B. Council agrees that more should be done within the Hauraki District to encourage sustainable attitudes, and is committed to doing these things both internally and out in the community. Council is seeking feedback from the community on its views in relation to Council having an on-going involvement in future climate change mitigation and adaptation, and would hope that this discussion sparks debate into the kinds of programmes Council should be involved with.

Council believes that it is not well funded to take part in the suggestions provided for in Option 3C, and that although having the community's best interests are at the forefront of this option, the cost may cause angst in the community, as could decisions being made that take the options of involvement or not out of people's hands.

Council decision

Following the Hearings of Submissions, Council took into account the feedback provided by the community. The majority of submissions reflected Council's view; however Council is aware that the number of submissions is only marginal in respect to the District population. Council has therefore formed a focus group comprising of four Councillors and the Mayor who will work with Council staff and the community to develop further policy options.

In order to give this focus group some idea of direction Council adopted its preferred Option 3B.

The Changing Demographics of Hauraki District

Introduction

Recent statistical information from the 2006 census by Statistics New Zealand has reinforced Hauraki District's population projections which forecast that, during the next three decades, fundamental changes in the country's demographic makeup will impact on both Central Government and Local Councils, and influence the way they need to plan for and provide services in the future.

What is Demography?

Demography is a statistical study of human populations with reference to size and density, distribution and vital statistics.

Statistics New Zealand is the country's official source of statistical information. It provides an exhaustive array of information on virtually every aspect of New Zealand's population, which can be broken down from global comparisons through to specific community information within a district.

Every five years Statistics New Zealand conducts a nation wide census. The information gathered helps to chart what has happened in the previous 5 years and allows projections that identify trends into the future.

What is happening?

Realisation that the baby boomers of the 1940's, 50's and 60's are rapidly approaching retirement age has left a wake of effects on the following generations; the youth sectors; those who are currently middle aged, and raised a number of questions and issues for Hauraki District Council (amongst others) to address in its long term planning.

Government recognised some time ago that intervention was necessary to address the changing demographics in New Zealand. This country's baby boom era was more prolonged than in any other developed country, yet is following global patterns which see a decline in the growth of younger generations and a significant increase in the elderly population. This is particularly apparent in the Hauraki District population projections.

Although three decades may seem half a life time away, Council must take a strategic (long term) look at what effects an increase in the ageing population and a decrease in the younger population will have on the local economy.

What is the Government doing?

The Government is introducing incentivised savings, has extended the official retirement age, is focussing on the 'brain drain' and retention of younger skilled people, has changed parental leave provisions and relaxed immigration requirements. These are but a few of the initiatives Central Government has introduced over recent years.

Not only has Government focussed on the issues of changing demographics, it has directed, in recent years, a lot of its efforts into the health of the nation with a view that a healthy population is more productive and more capable of working later into life.

Key Community Issues

The Changing Demographics of Hauraki District

- Of the 4.2 million residents in New Zealand at 30 September 2007, 67% are of working age (between 15 and 64) years, 13% are aged 65 years or over, and 21% are aged 14 or under. By 2021 those aged 65 years and over are projected to make up 17% of the population and then 22% by 2031. (Statistics New Zealand 2007).

What does Hauraki District Council need to consider?

Hauraki District Council has recognised the need to consider the changing demographics of the Hauraki District. Recent statistics have identified; that by 2031, there will be at least three distinct areas of the population that need to be considered when planning for the future:

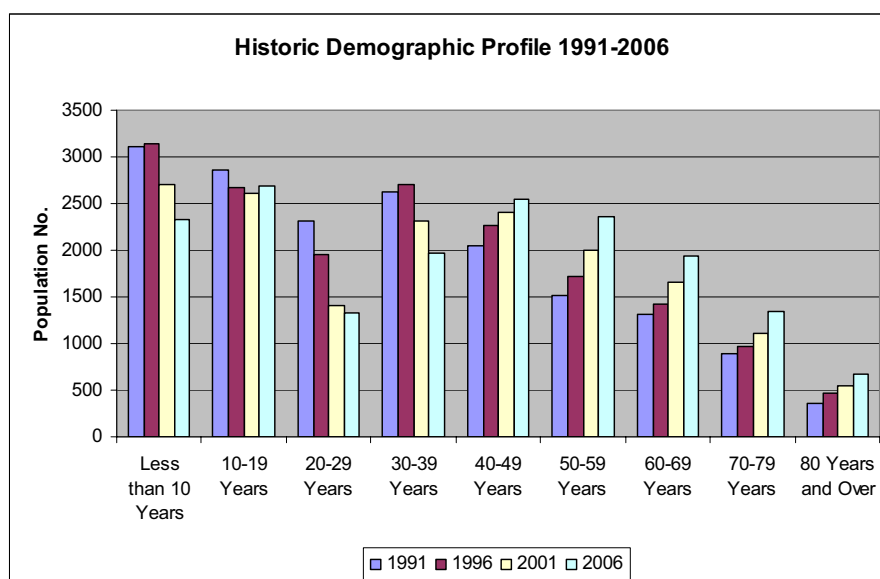
- Young people and students.
- Working age people (15 to 55).
- Those at or facing retirement.

Not only must Council address the economic and social impact of demographic change, it must also consider the infrastructural changes that may be needed as altering needs and demand become apparent. To do this Council will need to ensure that all future planning identifies and recognises demographic change as a key factor.

It is projected that:

- The population of children in Hauraki District aged 0 to 14 years will decrease by almost 1000 (from 2006) to approximately 3000 by 2031 (a decrease of 33%).
- The population of working age people in Hauraki District will decrease by over 1000 (from 2006) to approximately 4000 by 2031 (a decrease of 25%).
- The population of people aged 65 and over in Hauraki District will more than double (from 2006) to over 6000 by 2031, (nationally this projection is 22% of the population, in Hauraki District the projection is over 30%).

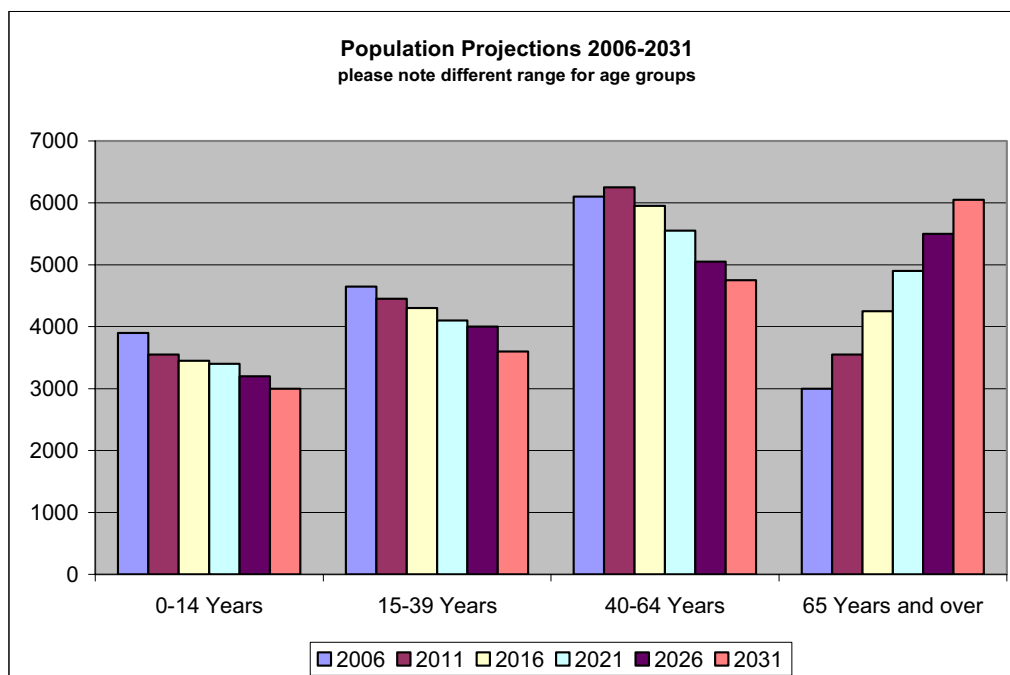
The graph below profiles the historic population between the years of 1991 and 2006.



Key Community Issues

The Changing Demographics of Hauraki District

The graph below shows the projected changes in population age brackets from 2006 to 2031. The only projected increase is in the 65 and over bracket.



Potential Council and community considerations - What could the likely impacts be?

1. Children 0 to 14, population decreasing by almost 1,000 to approximately 3,000 between 2006 and 2031.

Likely impacts could be seen as follows:

- Libraries will have less of a focus on providing resources to this age group.
- Parks and reserves could have spare capacity resulting in playground equipment and sporting facilities not being replaced due to lack of demand.
- The reduction or amalgamation of day care facilities, kindergartens and schools in the Hauraki District, and as a consequence, reduction in the number of teachers employed.
- Fewer school choices may have a negative effect on attracting professionals and other working people and their families to the Hauraki District.
- Parents/guardians may have to travel further for such services as health and dental care for their children.
- Clubs and societies catering to this younger sector will most likely decline.
- Retail spending will most likely decline for this sector, therefore retailers will have to adapt.
- Technology growth and development could see this sector become 'isolated' from their community by participating in less socially orientated activities.

Key Community Issues

The Changing Demographics of Hauraki District

2. Working age (15 to 64) population decreasing by over 1,000 to approximately 4,000 between 2006 and 2031

Likely impacts could be seen as follows:

- Council may experience rates pressures, by attempting to meet everyday demand costs with less income, even though demand for water and waste services may decrease.
- Overall, the economy will most likely not produce sufficient income to maintain more than fundamental infrastructure.
- It is possible that the younger sector of this age group may not be a strong youth voice for Council.
- Libraries may have less of a focus on providing as many resources to this age group.
- Demand for active sports fields may decline, resulting in spare capacity.
- Less business development may occur, resulting in fewer job opportunities. Or, the opposite could occur - low unemployment could result as demand for staff is increased to keep existing businesses operating.
- Retention of the professional sector (doctors, vets, accountants etc.) could be threatened as demand for services decreases. People may have to travel further for such services as health and dental care.
- Trade professionals (builders, plumbers, electricians etc.) could also move away to other centres if demand for services decreases.
- Clubs and societies may decline due to lack of membership and participation.
- Retail spending will most likely decline for this sector as the number of families decreases.
- Disposable income will most likely decline which will impact on 'social spending'. Or, disposal income could increase as fewer people compete for jobs, resulting in attractive salaries.
- Technology growth and development could see many people 'working from home' and not 'participating' in the community.
- A further decline in the volunteer sector may put added pressure on those willing or able to support others, (especially the elderly) and community activities.

3. The population of people aged 65 and over will more than double from 3,000 in 2006 to over 6,000 by 2031.

Likely impacts could be seen as follows:

- Council experiencing rates pressures, by attempting to meet everyday demand costs with less income.
- Increases in renewal and maintenance costs per ratepayer for such assets as street lighting, footpaths and safety measures are likely.
- Potential for Council to be required to provide affordable housing.
- Growth of demand in the elderly health care and elderly services sector.

Key Community Issues

The Changing Demographics of Hauraki District

- Growth in the elderly population potentially spurring economic growth in the form of investment in life stage developments (retirement villages) that attract elderly from other centres.
- An increased need for better transport links, and public transport.
- Retail spending patterns will most likely change, and retailers will have to adapt to greater demands by elderly consumers, many of whom will be on fixed incomes.
- There is likely to be less disposable income in the community therefore less community participation.
- With many more elderly in the community, demand for green spaces and passive recreation areas may increase.
- Demand for active sports fields may decline, resulting in spare capacity.
- Passive clubs and societies may increase to cater for growth.
- Overall, the economy will most likely not produce sufficient income to maintain more than fundamental infrastructure.

Key Community Issues

The Changing Demographics of Hauraki District

Options for Hauraki District - Your Feedback Sought

As members of the community Council asked for your feedback on a series of options on how Council should manage the changing demographics. In summary these options were as below:

Options to consider

Option A - Reactive Approach - A moderate approach

Does the community see Council as having a limited role in trying to manage natural demographic change?

Option B - Pro-active Approach - A positive approach

Does the community wish council to adopt policies and practises that try to alter the demography makeup, in particular the projected decline in the 0 – 64 age group?

Consultation summary

During the submission process:

- 9 submissions were received in support of Option A
- 14 submissions were received in support of Option B

Council recommendation

Prior to the consultation on *The Changing Demographics of Hauraki District*, Council's preferred option was a combination approach of Options A and B.

Council's preferred option

Council's preferred approach is a combination of Options A and B.

Being a relatively small District Council, Hauraki recognises its strengths and weaknesses. One of the most noticeable strengths is its ability to adapt readily to change. One of its biggest weaknesses, or risks, is the financing of large non core activities, because it simply does not have the resources.

Taking a moderate, pro-active approach, being a combination of the two options, allows Council to develop initiatives at a managed pace, with good advice and judgement. It also creates opportunities to diversify if necessary to meet unexpected demand or ensure 'a balance in social equity' is maintained throughout the district.

Council has a good track record as a leader when it comes to social development. Enhancing partnerships, working with Government Departments and developing new initiatives such as the Youth Forum are strengths that will most likely be developed further.

Council has been a successful investor and developer in the property market for many years. It will continue to monitor the Hauraki District's demands and if opportunities are identified to invest in, they will be favourably considered.

Council will maintain a positive and sustainable approach to demographic change leadership and development. To champion one cause over another without due consideration of the longer term impacts is a risk that must be managed.

Key Community Issues

The Changing Demographics of Hauraki District

Council's preferred option

Given the above Council believes that, over the next 10 years it should take a moderate and proactive approach by:

- Encouraging economic development.
- Encouraging social well-being.
- Identifying growth initiatives for the 0 – 64 age groups.
- Identifying growth initiatives for the 65 and over age group.
- Adapting policies and strategies that address the needs of those aged over 65 but, at the same time giving equal consideration to those in the under 64 age groupings.

Council decision

Following the Hearings of Submissions, Council took into account the feedback provided by the community. Although a number of submitters responded to the questions by ticking a box, there were few suggestions made.

Council therefore adopted its recommended option of a combination of Options A and B, and allocated the task of how to respond to demographic changes within the District to a focus group established by Council. It is anticipated that there will be further community involvement in decisions made on this issue.

Hauraki Youth promoting Sustainability for Hauraki

Traveling

Most of you drive cars right? Well what about car pooling or biking.

One day mum said, "I'll go down the road and get some milk from the shop."

I said, "You won't take the car will you?"

She said, "Yes. Why?"

I said, "The smoke that comes out of the car pollutes the earth maybe you should bike or walk."

"Ok," she said.

I said, "Mum can I come with you?"

"Yes," she said. "And we can take Cindy our dog for a walk too" she said. So we are not just saving the world we are excising to. So bike or walk so we aren't killing our world. By Leearna Clarke

Leearna Clarke
Kopuarahi School

Key Community Issues

Capital Works Projects

Capital Works Projects

Council has a number of capital work projects programmed over the coming ten years. The next 11 pages state what each of these projects are at the District and Ward levels.

Roading

Further detail is available on the Roothing activity capital programme on page 174.

Project	Total Cost \$000	When project will take place
Subsidised Roothing		
Resurfacing.	15,532	2009-19
Emergency reinstatement.	3,498	2009-10
Drainage renewals.	1,635	2009-19
Kerb and Channel.	778	2009-19
Area Wide Pavement Treatment.	5,705	2009-19
Bridge repairs.	501	2009-19
Streetlights.	1,315	2009-19
Minor Improvements.	2,906	2009-19
Walking and cycling works.	955	2009-19
Seal Extensions.	1,219	2010-19
Non Subsidised Roothing		
Seal Extensions.	4,137	2010-19
Kerb and channel.	2,825	2010-19
New vehicle crossings.	130	2009-19
New street lights.	102	2009-19
Plains unallocated works.	568	2009-19
Footpath replacements.	386	2009-19
Footpaths additional.	822	2009-19
Vehicle crossings.	135	2009-19

Key Community Issues

Capital Works Projects

Water

Council has prepared a comprehensive programme of capital works to ensure that it provides a safe, healthy and efficient water supply system which meets the reasonable needs of the consumers.

It has also prepared a programme that will ultimately meet the New Zealand Drinking Water Standards and Resource Consent Environmental Standards.

However in Council's opinion to meet the Drinking Water Standards and the Environmental Standards in the time frame that has been set by Government is unreasonable and places an unacceptable financial burden on the community.

During the term of this plan allocations have been made for full compliance but in a financially prudent way rather than in accordance with statutory requirements. The issues are detailed below.

Council's provision of water supplies

Council, in providing water supplies, has to meet a number of requirements from users and statutory bodies (particularly the Ministry of Health and the Waikato Regional Council) in relation to all aspects of supplies. These requirements vary depending on the size of the supplies but generally cover the following which include:

- Demand from consumers for water
- Meeting raw water supply Resource Consent approvals
- Treatment and reticulation of water
- Meeting Drinking Water Standards

Over the next ten years Council has a capital works programme for water supplies which totals \$41 million dollars, the majority of which will be spent in the period 2009/10 to 2013/14.

In determining the priorities for this capital works programme Council has resolved that the work will be prioritised in ranking order as follows:

Demand

There is real demand from consumers to ensure that sufficient water is available to meet their needs. To achieve this there is a need for higher capacity at some treatment plants, more reliable and sustainable source water, water storage of both raw and treated water and new or upgraded pipelines. The demand issue is particularly strong for the Plains water supply which struggles to meet demand.

Environmental Standards compliance

Council must meet the requirements of the Waikato Regional Council in terms of meeting consent conditions and renewing consents that expire over the next ten years.

Consent renewals will be given a high priority as will the need to find new water sources for the Waihi and Western Plains supplies.

At present Council is significantly exceeding the limit imposed by the Waikato Regional Council for how much water can be taken from the Walmsley Stream, the Waitete Stream, the Apakura Stream (Puriri) and the Waitakaruru Stream during summer months. It is likely that when new consents are granted that abstraction limits will be less than current levels.

There is also increasing demand in these supply areas and the identification and construction of new sources must be undertaken.

Drinking Water Standards

These are more fully explained below.

Council will, in meeting the demand and environmental compliance priorities, address the drinking water standards where it is practical to do so.

However, fully meeting Drinking Water Standards has been given a lower priority and Council believes that the current standards that it is complying with ensure that the health and well-being to the public is not compromised.

Key Community Issues

Capital Works Projects

Council will fully comply with Standards by 2015.

Water Supplies - Drinking Water Standards (NZ DWS)

Section 69W of the Health Act, 1956 (the Act) states that "Every drinking-water supplier must take reasonable steps to ensure that the drinking water supplied by that drinking-water supplier is wholesome".

The New Zealand Drinking Water Standards are actually amendments to the Health Act, 1956, developed by the Department of Health in 2005 and updated in 2008. The update has clarified the specific requirements of the New Zealand Drinking Water Standards, and Council has subsequently been defining what requirements need to be met to achieve compliance with these standards.

Duties of drinking water suppliers are:

- Adequate supply of drinking water – Take all practicable steps to ensure an uninterrupted supply of water to any point of supply.
- Protection of source water – Take reasonable steps to protect source water from pollution.
- Compliance with the Drinking Water Standards – Take all practicable steps to meet standards and supply wholesome potable water which meets the Standard guidelines for the aesthetic determinants.
- Prepare and implement a public health risk management plan (PHRMP) for each water supply.
- Keep records that indicate compliance with standards.
- Investigate complaints and take appropriate action. Keep records of complaints and remedial action.

The New Zealand Drinking Water Standards stipulate the criteria by which an acceptable level of compliance with the drinking water quality standard is determined. For the District's larger water supply schemes the criteria that require monitoring are:

- Bacterial compliance

- Protozoal compliance
- Viral compliance
- Cyanotoxin compliance
- Chemical compliance
- Radiological compliance

The New Zealand Drinking Water Standards also stipulate criteria for:

- Small Water Supply compliance
- Tankered Drinking Water Supply compliance

For Hauraki, the quality of water supplied varies throughout the district, depending on the water source, scheme design and level of treatment. The treatment type ranges from basic filtration to coagulation/flocculation (advanced settling of particles). All supplies are chlorinated. Routine testing monitors the quality of each supply in accordance with New Zealand Drinking Water Standards.

Public Health Risk Management Plans (PHRMP's) must be completed for each water supply, except for small and neighbourhood supplies (less than 500 people). These have been completed for Hauraki District's larger water supplies and are now being prepared for the balance of the supplies.

Public Health Risk Management Plans require the following to be undertaken:

- Identify the public health risks associated with the drinking water supply.
- Identify critical (at risk) points in the drinking water supply.
- Identify mechanisms for preventing public health risks arising in the drinking water supply and for reducing and eliminating those risks if they do rise.
- Include information about the estimated costs and benefits of the above mechanisms.
- Set out a time table for managing the identified public health risks associated with the drinking water supply.

Key Community Issues

Capital Works Projects

- Comply with any additional requirements imposed by the director general.

Key stages in PHRMP development are:

- Risk Assessment stage
- Risk Management stage
- Implementation
- Verification

How do these drinking water standards affect Hauraki District?

The present need for investment in capital works for drinking water supplies is driven by demand, security of supply and raw water source consents, as well as compliance with the new drinking water standards. In response the proposed capital works programme establishes priorities for meeting demand, providing security of supply, complying with raw water source consents and ensuring New Zealand Drinking Water Standards 2008 compliance at the same time.

Throughout the Country many water supply schemes will require upgrading as a result of the New Zealand Drinking Water Standards 2008. There will be a significant financial impact for Hauraki due to the capital required to meet the new standards, and this impact will be in addition to the capital works required to provide for the other drivers (being demand and renewal requirements).

The priority order for capital works in the water supply schemes are:

- Plains
- Waihi
- Paeroa

Compliance with the Standards for the smaller schemes such as Kaimanawa, Ohinemuri, Mackaytown, Karangahake and Waikino are planned to be achieved through the proposed linkage with the larger Waihi, Paeroa and Plains water supplies.

As the Drinking Water Standards 2008 and the associated new gradings come into effect over the next 3 years, a Drinking Water Assessor

will assess all supply systems under the new requirements.

The timing requirements for Hauraki District Council water supplies to comply with the new standards are:

- Minor Supplies (as defined by Ministry of Health) Plains, Paeroa and Waihi.

Compliance date: 1 July 2011 (classed as minor supply by the Act and having a population of 501 to 5,000).

The Plains supply is currently classed as a medium supply. It is being re-assessed to see if it should be classed as a 'minor' supply under the NZDWS as internal checks from the latest Census data show this supply to be serving less than 5,000 persons.

- Small Supplies (Waikino, Karangahake, Mackaytown, Ohinemuri).

Compliance date: 1 July 2012 (classed as minor by the Act as having a population of less than 500).

- Rural Agricultural Supplies (Kaimanawa).

Compliance date: 1 July 2013 or later depending on when standards are amended to explicitly recognise this category of supply.

It must be noted however that to comply by the dates set out above, the supply must have shown compliance for the full calendar year leading up to the compliance date – this effectively makes the date for completion of necessary upgrades 1 year earlier than that shown.

In the interim all treatment plants do not comply, and cannot until the assessor has established the gradings. Once graded a district wide summary of these gradings will be provided for in the Annual Report.

In summary, the following projects have been identified as part of the Water Supply Strategy and for inclusion into the Hauraki Community Plan 2009 – 19.

- New water source and supply pipeline for Waihi.

Key Community Issues

Capital Works Projects

- Re-build or replace water treatment plant, Waihi.
- Incorporation of existing, smaller water supplies into the large Paeroa, Plains and Waihi supplies:
 - Mackaytown
 - Ohinemuri
 - Karangahake
 - Kaimanawa
 - Huirau
 - Waikino
- Significant upgrades to the following treatment plants:
 - Kerepehi
 - Waitakaruru
 - Paeroa
 - Waihi

Replacement of key water mains to correct distribution, pressure and security of supply issues on the Plains.

- Provision of additional storage facilities for a number of supplies.
- Renewal of Resource Consents.
 - Mackaytown – will seek extension (expires 05/2012)
 - Karangahake – will seek extension (expires 04/2012)
 - Ohinemuri – will seek extension (expires 12/2011)
 - Waikino – will seek extension (expires 12/2010)
 - Huirau – will seek Variation (expires 07/2015)
 - Waitakaruru – will renew 2009
 - Kerepehi – application in hand
 - Paeroa – will renew 2019

- Waihi – will seek new consent for alternative source. Existing sources expire 06/2011 – will need extensions.

Summary

Council water supplies (which include source, treatment, reticulation and storage) do not currently meet the requirements of the revised drinking water standards and need additional capital works to comply

All steps practicable in terms of availability and affordability will be taken to achieve compliance. In preparation for the Hauraki Community Plan 2009-19, an analysis of needs has been undertaken together with the on-going development and updating of the Water Supply Asset Management Plan (which establishes the capital and operating requirements for the 2009 – 19 period). Based on this consideration, Council will comply with the drinking water standards, however, due to the significant financial implications associated with complying and the short time frames available, Council will not be able to meet the compliance dates as currently specified in the Standards.

As Council will not be able to complete all the works required to all supplies to meet the new standards by the due dates, a practical timetable to achieve this work has also been established.

A considerable number of local authorities are affected by the new New Zealand Drinking Water Standards. Information is that many will not be able to meet the target dates for compliance as detailed above. Discussions and negotiations are currently in progress at a national level with regard to extending these implementation dates.

The Government has indicated there may be funding available for upgrade works needed to meet the New Zealand Drinking Water Standards where existing supplies meet certain criteria.

Council will be investigating this possible source of funding where supplies meet the criteria but would expect that access to this fund would be heavily contested.

Key Community Issues

Capital Works Projects

Water capital projects

Due to the extent of work being carried out for water treatment during the life of this plan, the driver (reason for which the project is needed) has also been listed along with the cost and date.

Project	Total Cost \$000	When project will take place	Driver
Kaimanawa upgrades			
Connect to Kerepehi / Paeroa.	1,065	2013/14	Resource Consent
Upgrade Kerepehi / Paeroa water treatment plant.	1,362	2013/14	Resource Consent
Treated Water Reservoir.	454	2013/14	Level of service/ Drinking Water Standards
Karangahake/ Mackaytown upgrades			
Connection to Paeroa supply to achieve compliance with both Drinking Water Standards, and likely resource consent conditions.	1,559	2013/14	Drinking Water Standards/ Resource Consent
Ohinemuri upgrades			
Decommissioning of dams.	153	2014/15	Necessary for closure
Renewal of mains.	337	2010/11; 2013/14; 2016/17	Renewal
Investigation and reconditioning of Waihi Road from the L and P Bottle to Reservoir Road.	72	2009-11	Renewal
Paeroa upgrades			
Paeroa Water treatment plant upgrade.	4,049	20012-14	Drinking Water Standards/ Level of Service/ Resource Consent (Ohinemuri, Karangahake, Mackaytown)
Renewal of mains.	1,178	2009-19	Renewal
Plains upgrades			
Mains Renewals	3,920	2009-19	Renewal
Replacement of water meters.	295	2009-19	Renewal
Upgrade the Waihou intake.	319	2009/10	Drinking Water Standards/ Level of Service/ Resource Consent
Waitakaruru raw water storage.	2,910	2009/10	Level of Service/ Resource Consent
Investigation of deep groundwater resources in the Waitakaruru hills.	150	2009/10	Level of Service/ Resource Consent
Waitakaruru Water storage reservoirs	1,333	2010-12	Level of service
UV sterilisation.	600	2009/10	Drinking Water Standards
Upgrade to the Kerepehi water treatment plant.	7,139	2009/10	Drinking Water Standards/ Renewal/ Resource Consent

Key Community Issues

Capital Works Projects

Project	Total Cost \$000	When project will take place	Driver
Treated water storage at Kerepehi.	1,171	2009-11	Drinking Water Standards
Standby pump for Waihou.	130	2009/10	
Bore replacement at chlorine shed.	150	2009/10	
Waihi upgrades			
Mains upgrades.	1,178	2009-19	Renewal
Interim upgrade for disinfection compliance.	198	2009/10	Drinking Water Standards
Upgrade the Waihi water treatment plant.	2,321	2011-13	Level of service/Drinking Water Standards/ Resource Consent
Alternative water source.	4,880	2009-11	Drinking Water Standards/ Resource Consent
Waikino upgrades			
Connection of the Waikino supply to Waihi, and allowance for a 500m ³ treated water reservoir at Waikino.	998	2013/14	Drinking Water Standards/ Resource Consent
Clean Dam/Decommission.	76	2013/14	Necessary for closure
Mains renewals.	155	2011/12; 2014/15; 2017/18	Renewal

Wastewater

\$11,434,000 of funding has been programmed for district wide wastewater projects during the life of this plan. These projects include:

- Replacement of pump station controllers
- Sewer main renewals
- Aerator and irrigation pump renewals
- Cabinet/ancillaries
- Telemetry
- Pond desludging

These activities are predominately to take place at the end of the useful life of the particular part of the asset; however this date cannot be certainly identified at this stage. Council is working on a more robust way to identify more accurate ways of identifying these dates of renewal for the future.

Key Community Issues

Capital Works Projects

Land Drainage

Further detail is available on the Land Drainage activity capital programme on page 195.

Project	Total Cost \$000	When project will take place
Terrace stopbank (between Bush Road and the river, north of Ngatea) renewals on the eastern Plains.	93	2010/11, 2012/13 2014/15, 2016/17
Waitakaruru foreshore stopbank build up.	145	2014/15
Maukoro Canal left bank stopbank.	125	2010/11
Waitakaruru Stopbank (left and right bank).	250	2010/11
Van Eyk floodgate replacement.	214	2011/12
Smythes floodgate replacement.	197	2012/13
Improvement Plan items.	100	2009-12
Indian floodgate renewal to Waitakaruru stopbank.	140	2015/16
Pump screens.	66	2012/13
North Miranda Stopbank.	50	2009-10
Continuation of reconstruction programme of the Miranda-Waitakaruru foreshore stopbank systems.	139	2013/14
Kauoitī stopbank reconstruction.	186	2010/11

Stormwater

Further detail is available on the Stormwater activity capital programme on page 202.

Project	Total Cost \$000	When project will take place
Paeroa Racecourse detention.	40	2009/10
Railway reserve, Paeroa.	160	2009/10
Arney St, Paeroa.	83	2010/11
Normanby Road, Paeroa.	104	2010/11
Criterion Pump upgrade, Paeroa.	128	2009/10; 2011/12
Improvement Plan items.	87	2009-12
Miscellaneous renewals, Paeroa.	1,410	2012-2019
Morgan Park stormwater line renewal, Waihi.	52	2010/11
Miscellaneous upgrades, renewals and improvement plan items in Waihi.	810	2009-19
Continuation of piping of drains programme in Ngatea Township.	471	2009-19
Ngatea urban pump upgrades.	109	2012/13
Ngatea improvement plan items.	43	2009-12
Continuation of Turua stormwater improvement programme.	370	2009-19
Turua improvement plan items.	37	2009-19
Continuation of Kerepehi stormwater improvement programme.	205	2009-19
Kerepehi Improvement plan.	22	2009-12
Beach outfalls.	15	2009

Key Community Issues

Capital Works Projects

Solid Waste

Project	Total Cost \$000	When project will take place
Paeroa Refuse Transfer Station, slab and roading replacement/rehabilitation.	48	2012/13

Community Services and property

Further detail is available on the Community Services capital programme on page 213.

Project	Total Cost \$000	When project will take place
New books for District Libraries.	1,548	2009-19
Waihi Library extension.	710	2009-10
Pensioner housing renewals.	402	2009-19
New dog pound.	85	2009/10
Office building renewals.	281	2009-17
Upgrade of existing toilet block at Turua.	53	2011/12
Resurfacing of toilet floors at Haszard Street, Waihi.	22	2009/10, 2014/15
Resurfacing of toilet floors at Victoria Park, Waihi.	22	2009/10, 2014/15

Key Community Issues

Community Projects – Paeroa Ward

Community Projects – Paeroa Ward

Community Recreation

Further detail is available on the Community Recreation capital programme on page 222.

Project	Total Cost \$000	When project will take place
Installation of new park lighting and furniture for Paeroa Domain.	39	2010/11, 2013/14 2016/17
Resealing of internal roadways for Paeroa Domain.	35	2010/11
Replacement of play equipment for Railway Reserve Paeroa.	88	2011/12, 2013/14
Installation of park lighting for Railway Reserve Paeroa.	21	2010/11, 2013/14
New Skateboard Park for Railway Reserve Paeroa.	80	2009/10
Various playgrounds exercise equipment.	19	2010/11, 2012/13, 2015/16
Installation of new park furniture in Centennial Park/Brennan Field, Paeroa.	23	2011/12, 2014/15 2017/18
Installation of lights in Centennial Park/Brennan Field, Paeroa.	82	2012/13
New play equipment in Edwards Place, Paeroa. <ul style="list-style-type: none"> ▪ Install in 2010/11 ▪ replacement in 2014/15 	23	2010/11, 2014/15
Walkway between the Paeroa town centre and the Maritime Park.	22	2012 - 2014
Investigation into Motocross track in Paeroa (location yet to be established).	10	2011/12
Investigation into Mountain bike track in Paeroa (location yet to be established).		
Upgrade of Paeroa town entrance, and new banners.	63	2009-2011
Repainting of Paeroa swimming pool triennially.	62	2011/12, 2014/15 2017/18
Painting of Paeroa swimming pool buildings.	20	2013/14
Paeroa swimming pool cover replacement.	65	2010/11, 2016/17

Community Facilities

Further detail is available on the Community Facilities capital programme on page 233.

Project	Total Cost \$000	When project will take place
Due to the ongoing problem with mould on the ceiling of the Paeroa War Memorial Hall, a ventilation system for the main hall area.	20	2009/10
Painting of the Paeroa War Memorial Hall interior.	25	2011/12
Painting of the Paeroa War Memorial Hall exterior.	35	2015/16
Resealing the Paeroa War Memorial Hall floor.	24	2010/11, 2015/16
Upgrading of Paeroa Cemetery boundary fence on SH2	27	2011/12
Development of the Paeroa public cemetery extension.	189	2017/18

Key Community Issues

Community Projects – Waihi Ward

Community Projects – Waihi Ward

Community Recreation

Further detail is available on the Community Recreation capital programme on page 222.

Project	Total Cost \$000	When project will take place
Playground equipment replacement at Morgan Park, Waihi.	32	2010-12
Extension to the skateboard area at Morgan Park, Waihi.	20	2009/10
Re-levelling of the Morgan Park, Waihi netball courts.	139	2010/11, 2014/15 2018/19
Replant the main street gardens of Waihi township.	52	2010/11
Consultation, design and upgrade of the Pohutukawa Reserve in Whiritoa.	124	Consultation 2009/10 Design 2010/11 Upgrade 2011/12
Ohinemuri River Dam Walk Bridge – construction of Black Bridge.	145	2012/13
Waihi Town Centre 'way indicators' for signage to guide visitors to places of local interest, and main street bunting.	38	2009/13, 2015/16 2018/19
Waitete Stream walkway.	10	2010/11

Community Facilities

Further detail is available on the Community Facilities capital programme on page 233.

Project	Total Cost \$000	When project will take place
Floor resealing to be done triennially at Waihi Events Centre.	17	2011/12, 2014/15, 2017/18
Repainting of the exterior at Waihi Events Centre.	21	2010/11
Re-carpeting of the mezzanine at Waihi Events Centre.	6	2015/16
Waihi events centre gymnasium investigation.	7	2009/10
Purchase of new trestles and tables for Waihi Memorial Hall, along with a new sound system.	15	2009/10
Upgrade of Waihi Memorial hall including replace the carpet in the lounge and mezzanine area, floor resurfacing and exterior painting.	38	2009/10, 2013/15
Installation of new berms at Waihi Cemetery.	14	2012-14
Installation of a new ashes garden at Waihi Cemetery.	19	2009/10, 2011/12 2014/15
Upgrade of Waihi Cemetery drainage and of Beach Road boundary fence.	22	2009/10

Key Community Issues

Community Projects – Plains Ward

Community Projects – Plains Ward

Community Recreation

Further detail is available on the Community Recreation capital programme on page 222.

Project	Total Cost \$000	When project will take place
In conjunction with Positively Promoting the Plains, Hugh Hayward Domain is to undergo extensive development. \$250,000 has been allocated for the bulk of the development.	250	2009/10
A new skateboard park at Hugh Hayward Domain.	84	2010-12
A playground area Hugh Hayward Domain.	104	2010/12, 2014/15 2016/17
A new car park alongside soccer field at Hugh Hayward Domain.	40	2013/14
Upgrades to the netball courts at Hugh Hayward Domain.	53	2011/12
Inclusion of a washing system for the changing rooms at Ngatea Grandstand.	5	2010/11
Transfer the existing play equipment to the Turua Hall reserve.	11	2012/13
Design and landscaping of the eastern Ngatea town entrance.	18	2016/17
Development of Ngatea township perimeter walkway.	8	2012/13
Protection of the Turua jetty pontoons from damage.	36	2012/13
New seating to be added in two stages to Ngatea swimming pool.	24	2014-2016
Paint Ngatea swimming pool buildings and surrounds.	28	2011/12, 2017/18
Repainting of the Ngatea swimming pool.	29	2013/14, 2018/19

Community Facilities

Further detail is available on the Community Facilities capital programme on page 233.

Project	Total Cost \$000	When project will take place
Painting the interior of the Ngatea War Memorial Hall.	38	2012/13
Floors to be resealed at Ngatea War Memorial Hall.	6	2013/14
Replacement of tables and chairs at Ngatea War Memorial Hall.	60	2009/14
Upgrade to the car park east of the Ngatea Memorial Hall.	102	2015/16