

Parks & Reserves



HDC Parks & Reserves

Hauraki District Council maintains and administers a large number of Parks and Reserves, for both residents and visitors.

These are broken down into the following categories:

- Active Reserves (Sports fields)
- Buildings and Structures
- Passive Reserves
- Playgrounds
- Street Trees
- Road Verges

How do Parks & Reserves contribute to community outcomes?

Community Outcomes	How Parks and Reserves contribute
Affordable services and facilities	A range of parks and reserves are available for the whole community and maintained to required service levels within agreed budgets.
Safe and Healthy Environment	<ul style="list-style-type: none"> • Provision of parks and reserves to accommodate active and passive recreation pursuits. • Provision of parks and reserves to create and compliment district character and heritage sites. • Provision of safe children's playgrounds. • Provision of buildings and improvements in parks and reserves. • Preserve areas for enjoyment by future generations.

Current Levels of Service

Any individual, family or group of people may enjoy the sports fields, children's playgrounds and other parks and reserves facilities for leisure or recreation.

Sports fields are provided at Morgan Park, Waihi; Centennial Park, Paeroa Domain, Thorp Park, Paeroa; and the Hugh Hayward Domain, Ngatea.

These fields provide:

9 Rugby Fields	10 Touch Fields
1 AstroTurf Hockey Field	12 Netball Courts
2 Soccer Fields	9 Tennis Courts
2 Athletic Tracks	4 Lawn bowls greens
3 Cricket pitches	1 Petanque court
6 Croquet greens	4 Skateboard ramps

There are a number of reserves managed by local committees. These are:

- | | |
|---------------------|---------------------|
| Patetonga Reserve | Kerepehi Reserve |
| Kaihere Reserve | Netherton Reserve |
| Waitakaruru Reserve | Mackaytown Reserve |
| Turua Reserve | Karangahake Reserve |
| Waikino Reserve | |

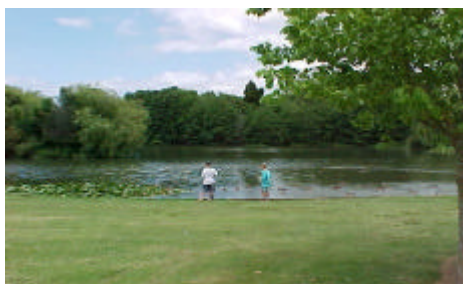
The primary objective in maintaining parks and reserves is to provide a consistent level of service for similar facilities district-wide. Industry standard 'Best Practice' methods are used wherever possible.

Council provides, maintains and administers large areas of land throughout the district for passive recreational use. Passive recreation includes activities such as walking, picnicking, kite-flying and similar low-key pursuits. The major passive recreation reserves are Whiritoa Beach Reserves, Gilmour Reserve, Waihi; Primrose Hill and Ohinemuri Park, Paeroa; Tilbury Reserve, Ngatea and the Central Business District garden and lawn areas.

Play equipment for children is provided in some parks and reserves.

Trees are provided along urban streets to:

- Help unify the district while emphasising local culture,
- Provide a sense of place and character,
- Contribute to the visual amenity and aesthetic values of neighbourhoods,
- Provide shade and a cooler environment during summer,
- Provide food and habitat for birds and other animals.



All parks and reserves are regularly mowed, building and trees maintained and rubbish is collected. Urban road verges are mowed.

Hauraki District Council operates and improves the reserves and recreational assets on behalf of residents at levels which meet the community's satisfaction.

What will success look like?

Target	Measure
Operate all Parks and Reserves in accordance with the needs of the community	A triennial survey shows at least 90% of surveyed residents are satisfied with the Parks and Reserves provided.
Play equipment is provided and maintained in accordance with current NZ Standards	Safety inspections are undertaken in accordance with NZ Standards.
The provided signs and Information Boards marking major parks and reserves are clear and legible, and provide information on: <ul style="list-style-type: none"> • Car parks • Entrances • Park features • Pathways • Park facilities 	Signs and Information Boards are provided in the following parks by 30 th June 2005: <ul style="list-style-type: none"> • Paeroa Domain • Morgan Park • Hugh Hayward Domain

Council's Proposed Strategies

At present Council is concentrating on data collection and information gathering about parks and reserves to assist in the development of long term strategies.

Council will promote existing parks and reserves to enhance their ability to be a 'district attraction'. This includes development of existing reserves and beautification projects. Council has no plans to acquire new parks and reserves during the next 10-20 years unless they are publicly demanded and economically viable. Although if land is proposed to be gifted Council will consider significant proposals based on long term benefit and economic effects to the community.

A 'recreational needs analysis' is proposed to be undertaken to determine the community's recreation and leisure needs, before recreation strategies are

developed. These strategies will identify circumstances that may assist in determining the necessity in retaining certain reserves.

While it is not proposed to sell any reserve land the sale of any reserve land would require a separate public consultation process.

Hauraki District Council plans to develop Reserve Management Plans for the District's Parks and Reserves. These Management Plans, required under the Reserves Act 1977, will assist Council in administering parks and reserves, through guiding policies and objectives.

Planned Capital Work

Projects	2004/05 (\$)	2005/06 (\$)	2006/07 (\$)	2007-14 (\$)
Paeroa Domain Improvements	20,000			60,000
Hugh Hayward Domain Improvements		50,000	10,000	
River Road carpark		50,000		
Turua Boat Ramp carpark			60,000	
Turua Boat Ramp Furniture & Lighting			40,000	
Replace Rocket Victoria Park, Waihi		25,000		
Gilmour Reserve – Landscape Development	105,000	210,000	90,000	150,000

Capital works such as the Gilmour Reserve Development result in increasing maintenance costs as Council must maintain the improved asset at a greater service level.

Signalling possible change in Levels of Service

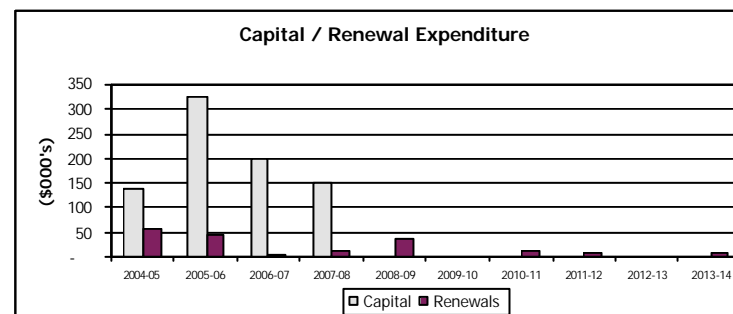
District and regional events, ie the annual 'Paeroa Highland Games & Tattoo' held in the Paeroa Domain each year, place one-off demands on parks and reserves. These events, while stimulating the local economy, create additional strain on capacity. Consideration of the impact of these types of events will need to be addressed when assets for parks and reserves come up for replacement/renewal.

There is only one specified Level of Service Agreement in place (Town Centre Gardens & Amenity Lawns). Developing other agreements for parks and reserves mowing, verge mowing, street trees, and playgrounds has been identified as an improvement tool necessary to provide and maintain parks and reserves. It is likely that changes in service levels may occur as a result.

Where do funds come from?

Activity	General Rates District	Targeted Rates	User Charges and fees
Active Reserves	20%	80%	
Passive Reserves	100%	-	-

What is the operating cost for the Parks and Reserves activity?



What is the operating cost of the Parks and Reserves activity? (continued)

Forecast 2003-04 \$000's		Forecast 2004-05 \$000's	Projected 2005-06 \$000's	Projected 2006-07 \$000's	Projected 2007-08 \$000's	Projected 2008-09 \$000's	Projected 2009-10 \$000's	Projected 2010-11 \$000's	Projected 2011-12 \$000's	Projected 2012-13 \$000's	Projected 2013-14 \$000's
EXPENDITURE											
Principal Reserves											
74	Paeroa Domain	85	85	85	85	85	85	85	85	85	85
82	Hugh Hayward Domain	92	91	92	92	92	92	92	92	92	92
34	Morgan Park	40	40	40	40	40	40	40	40	40	40
190		217	216	217	217	217	217	217	217	217	217
Other Reserves											
72	State Highway Two Reserves	81	81	85	86	81	81	81	81	81	85
35	Passive Reserves	66	54	51	47	42	40	40	40	40	40
216	Paeroa Reserves	237	258	258	258	258	258	258	259	258	258
55	Plains Reserves	72	71	71	71	72	71	71	72	71	71
177	Waihi Reserves	216	236	252	259	268	267	267	268	267	267
555		672	700	717	721	721	717	717	720	717	721
745	Total Expenditure	889	916	934	938	938	934	934	937	934	938
LESS REVENUE											
(3)	Fees and Charges	(3)	(3)	(3)	(3)	(2)	(2)	(2)	(2)	(2)	(2)
(533)	Targeted Rates	(616)	(655)	(672)	(679)	(690)	(689)	(689)	(691)	(689)	(689)
(201)	General Rates	(270)	(258)	(259)	(256)	(246)	(243)	(243)	(244)	(243)	(247)
8	NET COST OF SERVICE	-	-	-	-	-	-	-	-	-	-
	Capital	138	322	200	150	-	-	-	-	-	-
	Renewals	55	47	5	13	40	-	13	10	-	10