

10.0 Water Supply

The Hauraki District Council owns and operates eight water supply systems that service the communities of Paeroa, Karangahake, Ohinemuri, Kaimanawa, Mackaytown, Waihi, Waikino, Ngatea, Kerepehi and Turua, and the rural communities of the Plains.

The reticulated water supplies range in size from a major supply with three sources supplying most of the Plains Ward, to a small supply servicing the Karangahake area.

The supplies have varying degrees of treatment and water quality.

The Hauraki District Council's goal in respect of the water supply activity is to ensure the collection, treatment and distribution of potable water to meet all reasonable requirements of the District's water consumers.

Focus for the Next 3 Years

- 10.1 To operate the water supplies within the Hauraki District in compliance with requirements of the Resource Management Act, Council Bylaws and other relevant legislation.
- 10.2 Renew all resource consents that expire within the planning period and preparing for the renewal of consents due to expire in the next 3 to 5 years.
- 10.3 To manage the water supply activity in accordance with the levels of service as agreed through the Asset Management Plan process.

Emphasis in 2003-2004

- 10.1.1 To ensure compliance with volume controls of all current water take rights is achieved 100% of the time within the planning period.
- 10.2.1 To obtain resource consents for the long term water supply option for Waihi.
- 10.2.2 To obtain consents, if required, to decommission the Ohinemuri Dam.
- 10.3.1 To replace at least 4.0km of water mains within budget throughout the district.
- 10.3.2 In 90% of cases, Council will undertake sufficient repairs within 12 hours of receiving notification of a water break, to maintain a normal level of service.
- 10.3.3 To have no more than 450 breaks in water mains and services, district-wide, within the planning period.
- 10.3.4 To ensure the following routine tests undertaken at the Water Treatment Plants meet the following parameters:

E.coli	Not detected for 95% of tests.
Regular Chlorine Tests	0.3 - 5.0 mg/l for 95% of tests.
Regular pH Tests	{6.5 - 8.0} for 90% of tests.
- 10.3.5 To complete the repair works to the internal surface of the Kerepehi Raw Water Reservoir by 30 June 2004.
- 10.3.6 To undertake the capital works provided for in the annual plan estimates.

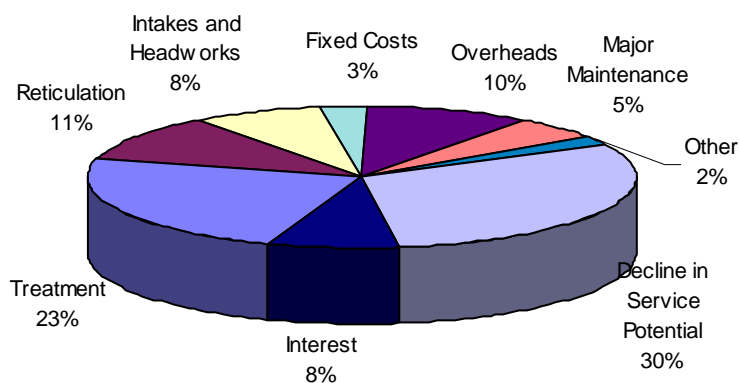
Changes This Year

Council proposes to start work on the sludge ponds for the backwash water at the Kerepehi Water Treatment Plant.

Projected Costs and Funding - Water Supply

<i>Budget</i>		Forecast	Projected	Projected
2002-03		2003-04	2004-05	2005-06
\$000's		\$000's	\$000's	\$000's
EXPENDITURE				
694	Treatment	680	679	679
314	Reticulation	314	311	308
222	Intakes and Headworks	218	229	230
39	Fixed Costs	79	79	79
272	Overheads	288	294	305
98	Major Maintenance	148	42	60
56	Other	56	56	56
1,112	Decline in Service Potential	888	913	954
262	Interest	224	181	233
3,069	Total Expenditure	2,895	2,784	2,904
(3,658)	Less Targeted Rates	(3,683)	(3,699)	(3,722)
(589)	NET COST OF SERVICE	(788)	(915)	(818)

EXPENDITURE 2003/04



1,295	Capital and Renewals	1,054	2,581	3,762
--------------	-----------------------------	--------------	--------------	--------------