

Council Overview

Hauraki District Council's Mission

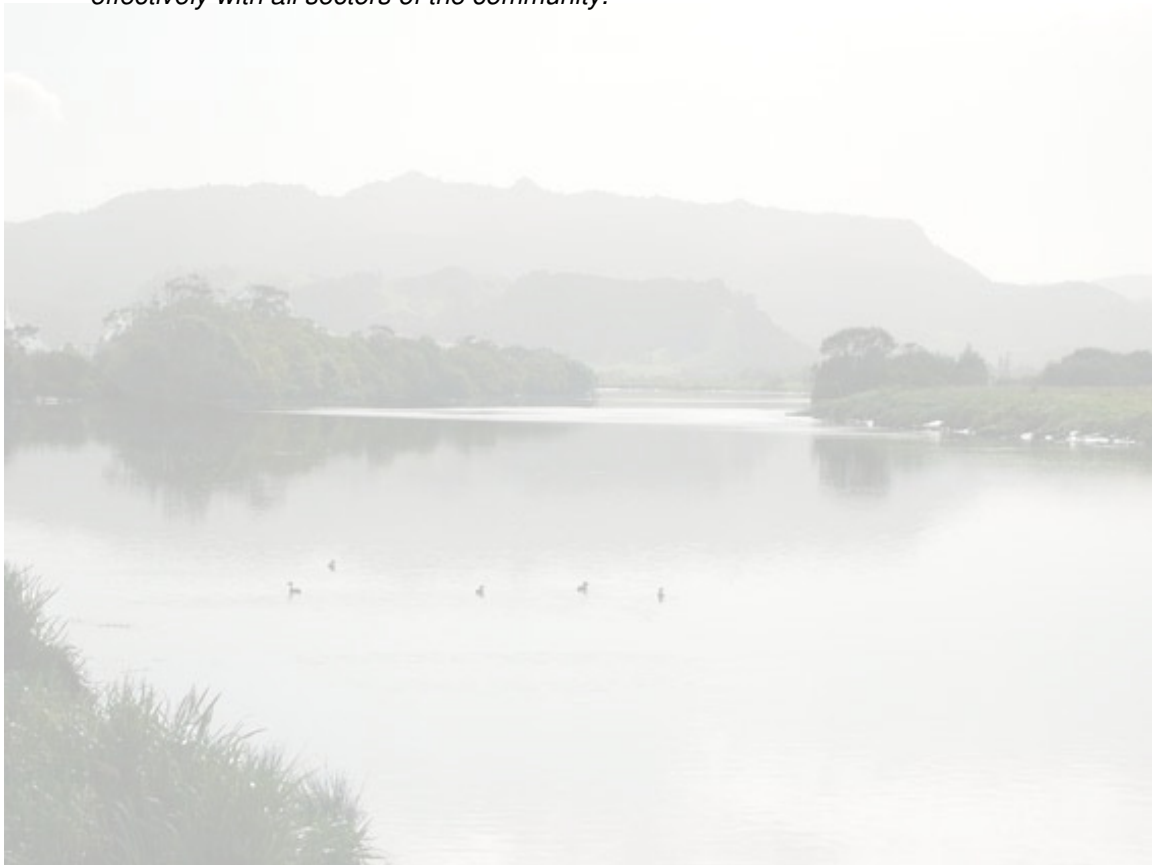
To ensure the successful:

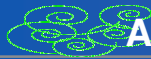
- *Provision of services and facilities;*
- *Advocacy on behalf of the community; and*
- *Use and management of resources;*

... for all who live in or visit the Hauraki District.

Hauraki District Council's Vision for the Future

- *A range of services and facilities meeting the community's needs and realistic expectations;*
- *A positive climate which encourages balanced and sustained growth throughout the district;*
- *An environment which encourages vibrant communities and an enhanced quality of life;*
- *The wise use and management of all resources for the continued benefit of the district;*
- *A proactive Council that provides leadership, is results orientated and communicates effectively with all sectors of the community.*





Elected Members Guide

Elected Members can be contacted by telephone to discuss any issues or raise any concerns considered important or alternatively by email at info@hauraki-dc.govt.nz or by mail to Hauraki District Council, P O Box 17, Paeroa.



Mayor

Mr. John Tregidga, J.P.
(07) 862 8956

Paeroa Ward



Mrs. Julie Bubb, J.P.
(07) 862 7188
(Ward Chair)



Mr. Tom Meyers
(07) 862 8685



Mr. Paul Milner
(07) 862 8653



Mr. Keith Trembath
(07) 862 6833

Plains Ward



Mr. Ian Troughton
(07) 867 5114
(Ward Chair)



Mr. Don Challis, J.P.
(07) 867 7097



Mr. Bruce Gordon
(07) 867 7436



Mr. George Gray
(07) 867 3102

Waihi Ward



Mr. Sel Baker,
J.P.
(07) 863 8683
(Ward Chair)



Mrs. Mary Carmine
Deputy Mayor
(07) 863 8740



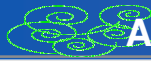
Mr. Don Lockwood
(07) 863 8330



Mr. Mike Hayden
(07) 863 7292



Mrs. Bronwyn Wightman
(07) 863 7509



Standing Committees

The mayor is appointed as an ex-officio member to all Council Committees and Subcommittees, except the Hearings Committee.

Ward Committees

The Council currently has three Ward Committees that deal with local community issues (predominately non-infrastructure assets) specific to their Ward – Plains, Paeroa and Waihi. All three Ward Committees meet on the third to last Tuesday of each month at the Paeroa Office, at 9.00am, 12.30pm and 2.30pm respectively.

Hearings Committee

The Hearings Committee handles matters relating to the Resource Management Act, including consents, monitoring and enforcement. Hearings on matters relating to dogs are also dealt with.

The Hearings Committee meeting on the second to last Thursday and fourth to last Thursday of each month, as required.

- Mary Carmine (Chairperson)
- Bruce Gordon (Deputy Chairperson)
- Julie Bubb

District Plan Committee

The District Plan Committee handles matters relating to District Plan Changes, the District Plan Review and Resource Management Policy issues.

The District Plan Committee meets on the second Monday of each month, as required.

- Bruce Gordon (Chairperson)
- Bronwyn Wightman (Deputy Chairperson)
- Keith Trembath
- Mike Hayden
- Mary Carmine

Consultative Committee Water and Waste

This committee was established to manage the consultation required with special interest groups within the district regarding water and waste issues.

Meetings are on the fourth to last Tuesday of every second month at the Paeroa office at 10.00am. Members include:

- John Tregidga (Mayor)
- Selwyn Baker (Chairperson)
- George Gray (Committee Member)
- Keith Trembath (Committee Member)
- Bronwyn Wightman (Deputy Chairperson)
- Te Ruunanga A Iwi O Ngati Tamatera (R Brownlee)



- Ngati Maru Iwi Authority (W Peters)
- Ngati Tara Tokanui Management
- Te Kupenga O Ngati Hako (A Anderson)
- Te Runanganui O Ngati Paoa (T Compain)
- Hauraki Maori Trust Board (G King)
- Hauraki Coromandel Federated Farmers (R Corlett)
- Royal Forest and Bird Protection Society (D Welsh)

Other Committees

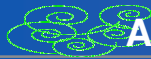
Council also has the following Standing Committees that meet only as and when required:

- Audit
- Pensioner Flats Allocation
- Councillor Remuneration
- CEO Performance Assessment
- Economic Development
- Tetley's Quarry
- Drainage
- Road Safety
- Waihi Beach Sub-committee

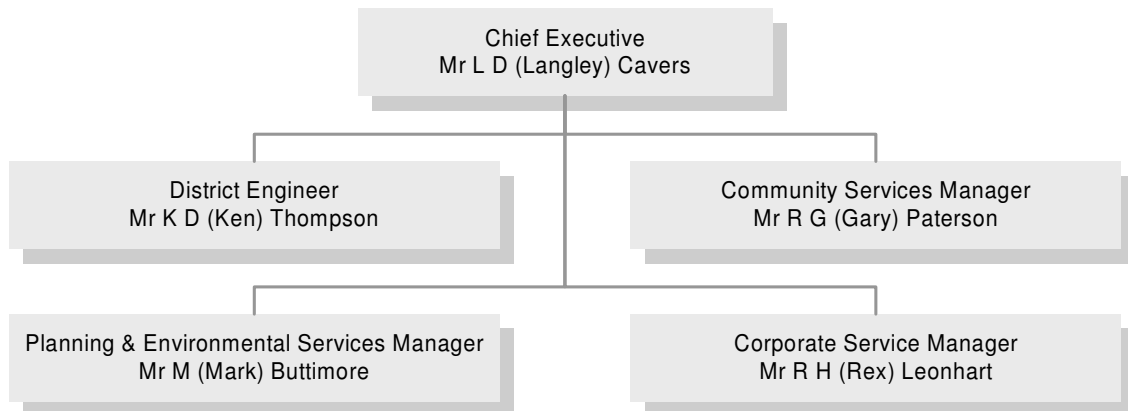
Portfolios

Council has portfolio holders for particular Council activities. These portfolio holders have responsibility to interact with the community and Council staff, on matters relating to the portfolio; the function of the position and the key legislation involved in the portfolio. The portfolio is one of Governance rather than the day to day operations and monitoring.

- Finance (Bruce Gordon)
- Policy (Mary Carmine)
- Property (Selwyn Baker)
- Sport and Recreation (Bronwyn Wightman)
- Network Services (excluding Roding and Solid Waste) (Ian Troughton)
- Roding (Don Challis)
- Community Services (Don Lockwood)
- Community Development (Mike Hayden)
- Iwi Liaison (Selwyn Baker)
- Community Safety (Keith Trembath)
- Solid Waste (George Gray)



Senior Management



Business Units Board of Management

Members of the Board	Business Unit Managers
Chief Executive: Mr. L D (Langley) Cavers (Chairperson)	Construction & Maintenance Manager: Mr. M A (Mike) Voykovich
District Engineer: Mr. K D (Ken) Thompson	Technical Services Manager: Mr. A (Adrian) De Laborde
Corporate Services Manager: Mr. R H (Rex) Leonhart	Tetley's Quarry Manager: Mr. A (Alan) Smith
	Workshop Manager: Mr. P (Peter) Smith

Hauraki District Council Offices

Principal Office

William Street
P O Box 17
Paeroa

Ph: (07) 862 8609
0800 734 834 (from within the District)
Fax (07) 862 8607
E-mail: info@hauraki-dc.govt.nz
Website: www.hauraki-dc.govt.nz

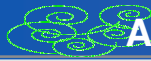
Plains Service Centre

Orchard West Road
Ngatea

Waihi Service Centre

92 Seddon Street
Waihi





Community Outcomes

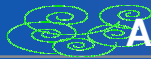
As stated in the Long Term Council Community Plan 2004-14, Council undertook an intense consultation process to identify Community Outcomes for the Long Term Council Community Plan 2004-14. In the Long Term Council Community Plan 2004-14 a set of interim outcomes were developed, sourced predominantly from comments provided by the community in a district wide telephone survey, late 2002. These outcomes were:

Community Outcomes	HDC Proposed Actions
Sustained Economic Growth	<ul style="list-style-type: none"> ➤ Business attracted, assisted and sustained in the District. ➤ Active promotion of the District. ➤ The encouragement of employment opportunities. ➤ An improved image created for the District.
Safe and Healthy Environment	<ul style="list-style-type: none"> ➤ Appropriate Council involvement in mining issues. ➤ Effective communication on environmental activities occurring within the District. ➤ Assured water quality and water supply. ➤ Improved drainage in low areas. ➤ Wastewater treatment complies with resource consent requirements.
Safe and Accessible Land Transport System	<ul style="list-style-type: none"> ➤ Compliance with roading standards. ➤ Improved footpaths. ➤ Planning integrated with Regional Land Transport Strategy, Transit New Zealand and neighbouring local authority planning.
Affordable Service and Facilities	<ul style="list-style-type: none"> ➤ Affordable services and facilities provided by Council. ➤ Provision of recreation and leisure services.

Formal mechanisms to monitor these outcomes were not instigated. These outcomes had the key purpose of giving Council interim direction while a full community consultation process to identify Community Outcomes was undertaken. This consultation helped consider actions and activities in a precursory phase to the formal identification of Community Outcomes for the Long Term Council Community Plan 2006-16.

The Hauraki Community Outcomes for 2006-16 were adopted by Council on the 29th June 2006, as part of the Long Term Council Community Plan 2006-16. The Hauraki Community Outcomes for 2006-16 are:

Hauraki Community Outcomes for 2006-16
<ul style="list-style-type: none"> ➤ Maintain and protect the vibrancy of rural communities; ➤ Vibrant and sustainable businesses and business economies in our District; ➤ Cultural values of tangata whenua throughout the District be respected and supported through further development of consultation, participation and partnership; ➤ We encourage increased opportunities to participate in recreational, sporting and cultural activities; ➤ Integrated provision of quality health and social services throughout our District. ➤ Management of our natural and physical environment in a sustainable manner; ➤ Our Hauraki youth be provided with greater opportunities to participate in the decision-making processes pertaining to the development of our communities; ➤ Hauraki District residents be given the opportunity to participate in the educational and training programmes. ➤ Long term planning, ensures that our future infrastructure requirements meet the growth and development opportunities of our District.



These outcomes were identified through a series of mechanisms including:

- 14 forums were held with a variety of sectors in the community.
- A telephone survey was held with 300 residents and ratepayers.
- A short story and art competition was held with primary-school aged children in the District.
- Additional opportunity was available for contribution through the internet.

Council considers the process of the identification of the Community Outcomes to have been a very successful process and has already started to see some members of the Community begin working towards the achievement of these Outcomes.

These will be formally monitored and a monitoring report will be developed in 2009 to demonstrate the community wide progress on these Community Outcomes.

Community Consultation

Significant projects involving public consultation during the year were undertaken. These included consultation on the Earthquake Prone and Dangerous and Insanitary Buildings Policy; the Long Term Council Community Plan 2006-16; the Drainage Amalgamation; and the Wharves and Jetties Bylaw.

Maori Consultation

In the 2005/06 year, Council continued to progress relationship with Maori. Council now has four Memorandum of Partnerships with Hauraki Iwi. Council met with and resigned Memorandum of Partnerships with both the Ngati Tamatera and Ngati Hako on 20 July 2005 and 17 March 2006 respectively.

Council continued the successful monthly meetings of the Water and Wastewater Consultative Committee. This committee meets to consult with special interest groups to discuss the Districts water and waste issues. Iwi representatives on this committee are from:

- Te Ruunanga A Iwi O Ngati Tamatera
- Ngati Maru Iwi Authority
- Ngati Tara Tokanui Management
- Te Runanganui O Ngati Paoa
- Hauraki Maori Trust Board

Triennial Survey

In October/November 2004 Council commissioned Key Research & Marketing to conduct a survey of residents and ratepayers to assess levels of satisfaction with community services and facilities as well as gauging community opinion regarding social, economic, cultural and environmental well-beings to help in the initial facilitation of Community Outcomes.

The study consisted of 502 interviews. To ensure a proportionately representative sample 146 interviews were conducted with residents in the Plains ward, 166 interviews were conducted with residents in the Paeroa ward and 190 interviews were conducted with residents of the Waihi ward. Quotas were enforced according to age and gender to ensure that a proportionally representative sample of the Hauraki District's population was obtained. The overall results have a margin of error of +/- 4.4% at the 95% confidence level.

The next triennial survey will be held late 2007.