

## **COUNCIL OVERVIEW**

### *Hauraki District Council's Mission*

To ensure the successful:

- *Provision of services and facilities;*
- *Advocacy on behalf of the community; and*
- *Use and management of resources;*

... for all who live in or visit the Hauraki District.

### *Hauraki District Council's Vision for the Future*

- *A range of services and facilities meeting the community's needs and realistic expectations;*
- *A positive climate which encourages balanced and sustained growth throughout the district;*
- *An environment which encourages vibrant communities and an enhanced quality of life;*
- *The wise use and management of all resources for the continued benefit of the district;*
- *A proactive Council that provides leadership, is results orientated and communicates effectively with all sectors of the community.*

## ***ELECTED MEMBERS GUIDE***



### ***Mayor***

Mr. John Tregidga, J.P.

(07) 862 8956

Elected Members can be contacted by telephone to discuss any issues or raise any concerns considered important or alternatively by email at [info@hauraki-dc.govt.nz](mailto:info@hauraki-dc.govt.nz) or by mail to Hauraki District Council, P O Box 17, Paeroa.

### ***Paeroa Ward***



Mrs. Julie Bubb, J.P.  
(07) 862 7188



Mr. Tom Meyers  
(07) 862 8685



Mr. Paul Milner  
(07) 862 8653



Mr. Keith Trembath  
(07) 862 6833

### ***Plains Ward***



Mr. Don Challis, J.P.  
(07) 867 7097



Mr. Bruce Gordon  
(07) 867 7436



Mr. George Gray  
(07) 867 3102



Mr. Ian Troughton  
(07) 867 5114

### ***Waihi Ward***



Mr. Sel Baker, J.P.  
(07) 863 8683



Mrs. Mary Carmine  
Deputy Mayor  
(07) 863 8740



Mr. Don Lockwood  
(07) 863 8330



Mr. Mike Hayden  
(07) 863 7292

## **STANDING COMMITTEES**

The Mayor is appointed as an ex-officio member to all Council Committees and Subcommittees, except the Hearings Committee.

### *Ward Committees*

The Council currently has three Ward Committees that deal with local community issues (predominately non-infrastructure assets) specific to their Ward – Plains, Paeroa and Waihi. All three Ward Committees meet on the third to last Tuesday of each month at the Paeroa Office, at 9.00am, 12.30pm and 2.30pm respectively.

### *Hearings Committee*

The Hearings Committee handles matters relating to the Resource Management Act, including consents, monitoring and enforcement. Hearings on matters relating to dogs are also dealt with.

The Hearings Committee meeting on the second to last Thursday and fourth to last Thursday of each month, as required. Members include:

- Mary Carmine (Chairperson)
- Bruce Gordon (Deputy Chairperson)
- Julie Bubb

### *District Plan Committee*

The District Plan Committee handles matters relating to District Plan Changes, the District Plan Review and Resource Management Policy issues.

The District Plan Committee meets on the second Monday of each month, as required. Members include:

- Bruce Gordon (Chairperson)
- Keith Trembath
- Mike Hayden
- Mary Carmine
- Julie Bubb

### *Consultative Committee Water and Waste*

This committee was established to manage the consultation required with special interest groups within the district regarding water and waste issues.

Meetings are on the fourth to last Tuesday of every second month at the Paeroa office at 10.00am. Members include:

- John Tregidga (Mayor)
- Sel Baker (Chairperson)
- George Gray (Committee Member)
- Keith Trembath (Committee Member)
- Tom Meyers
- Te Ruunanga A Iwi O Ngati Tamatera (R Brownlee and T Nicholls)
- Ngati Maru Iwi Authority (W Peters)
- Ngati Tara Tokanui Management
- Te Kupenga O Ngati Hako (T Wikiriwhi and B Clarkin)

- Te Runanganui O Ngati Paoa (T Compain)
- Hauraki Maori Trust Board (J Anderson)
- Hauraki Coromandel Federated Farmers (R Corlett)
- Royal Forest and Bird Protection Society (D Welsh)

### *Other Committees*

Council also has the following Standing Committees that meet only as and when required:

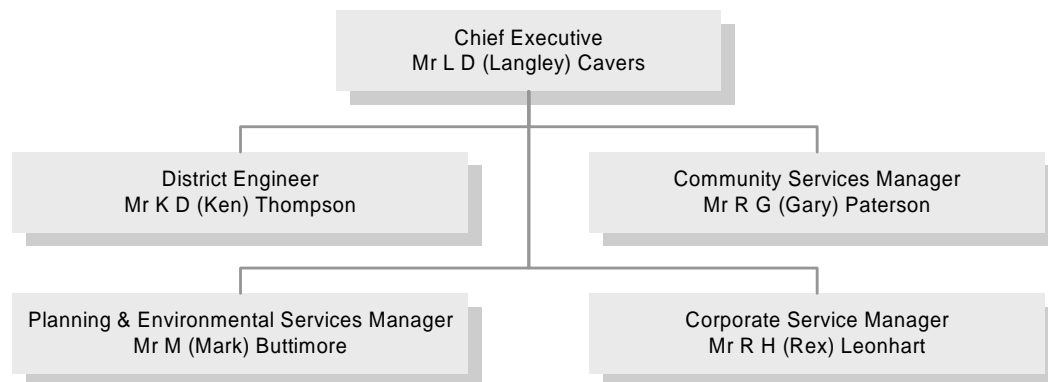
- Audit
- Pensioner Flats Allocation
- Councillor Remuneration
- CEO Performance Assessment
- Economic Development
- Tetley's Quarry
- Drainage
- Road Safety
- Waihi Beach Leasehold Properties Sub-committee
- District Reserve
- Council Organisations Appointments Sub-committee

- Finance (Bruce Gordon)
- Policy (Mary Carmine)
- Property (Sel Baker)
- Sport and Recreation (Paul Milner)
- Network Services (excluding Roothing and Solid Waste) (Ian Troughton)
- Roothing (Don Challis)
- Community Services (Don Lockwood)
- Community Development (Mike Hayden)
- Iwi Liaison (Sel Baker)
- Community Safety (Keith Trembath)
- Solid Waste (George Gray)

### *Portfolios*

Council has elected member portfolio holders for particular Council activities. These portfolio holders have responsibility to interact with the community and Council staff, on matters relating to the portfolio; the function of the position and the key legislation involved in the portfolio. The portfolio is one of Governance rather than the day to day operations and monitoring.

## Management Team



## Business Units Board of Management

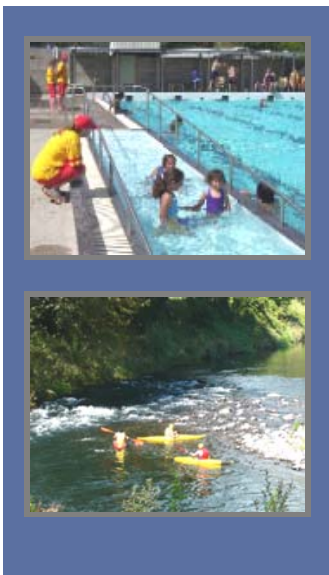
| Members of the Board   | Business Unit Managers   |
|--|--|
| <b>Chief Executive:</b><br>Mr. L D (Langley) Cavers<br>(Chairperson) | <b>Construction &amp; Maintenance Manager:</b><br>Mr. M A (Mike) Voykovich |
| <b>District Engineer:</b><br>Mr. K D (Ken) Thompson                  | <b>Technical Services Manager:</b><br>Mr. A (Adrian) De Laborde            |
| <b>Corporate Services Manager:</b><br>Mr. R H (Rex) Leonhart         | <b>Tetley's Quarry Manager:</b><br>Mr. A (Alan) Smith                      |
|  | <b>Workshop Manager:</b><br>Mr. P (Peter) Smith                            |

## COMMUNITY OUTCOMES

As stated in the Hauraki Community Plan 2006-16 (Long Term Council Community Plan), Council undertook an extended consultation process with the Hauraki Community to identify Community Outcomes. These Community Outcomes are collective statements of community goals and aspirations – ‘the things that the community thinks are important for its well-being’.

These community outcomes were gathered from the Hauraki community by a variety of consultation processes including forums, telephone surveys, and primary school competitions. Further opportunities to provide input were available via the internet and local newspaper. The consultation process proved very successful.

### The following Community Outcomes were identified -



#### **Vibrant and sustainable businesses and business economies in our District**

- We encourage further development of our District's CBD's economic viability
- We support entrepreneurs and leaders to proactively drive planned growth strategies and community business within our District
- We encourage planned and developed infrastructural services and facilities to sustain our communities' growth
- We encourage further development of tourism opportunities and facilities focusing on our heritage and eco-tourism

#### **Integrated provision of quality health and social services throughout our District**

- Our community seeks the improvement of mechanisms for co-ordination, delivery, communication and education by health and social service providers
- We support the development of new initiatives that address well-being of those in need and of our community in general

#### **Maintain and protect the vibrancy of rural communities within our District**

- Our communities support the viability of maintaining our rural lifestyles and values
- Protecting the viability of our land for primary production

#### **Cultural values of tangata whenua throughout the District be respected and supported through further development of consultation, participation and partnerships**

- We encourage the development of culturally appropriate programmes and processes
- We encourage service providers to develop partnerships that assist with capacity building of our tangata whenua to participate in decision-making processes



**Our Hauraki youth be provided with greater opportunities to participate in the decision-making processes pertaining to the development of our communities**

- We support the wider community and organisations to encourage and engage youth to actively participate
- We need to understand, identify and address specific issues relating to our youth

**We encourage increased opportunities to participate in recreational, sporting and cultural activities**

- Our recreational, cultural and heritage groups work together to identify issues that lead to better efficiencies, access and sustainable solutions
- We encourage better utilisation of existing infrastructure and resources
- We support planning for our culture and heritage where initiatives can be actively co-ordinated to ensure sustainability

**Management of our natural and physical environment in a sustainable manner**

- We encourage a balance between economic growth and environmental protection and enhancement
- We support the development of land use planning controls that allow for economic growth in a sustainable manner
- We support protecting our significant habitats and ecosystems.

**Hauraki District residents be given the opportunity to participate in the educational and training programmes**

- We encourage better communication and co-ordination between education providers
- We support the need for improvement on the transition between educational levels to allow further training and work opportunities

**Long term planning, ensures that our future infrastructure requirements meet the growth and development opportunities of our District**

- We want to have our say on our District's future
- We value the provision of infrastructural services in our District to be well-managed

*Monitoring Community Outcomes*

As detailed in the Hauraki Community Plan 2006-16, Council is required to report to its community in a three yearly monitoring report on how each of the Hauraki Community Outcomes has been worked towards. This allows the community to see how agencies as a whole are addressing the priorities the community has identified as being important. The first complete Hauraki Community Outcomes Monitoring report will be released in 2009.

In the interim, Council is required to report on its own activities annually that have contributed to the Hauraki Community Outcomes. Within this Annual Report, each of Councils activities demonstrate how particular projects have taken steps to contribute to the Hauraki Community Outcomes. Furthermore a number of indicators have been reported on to demonstrate Councils own progress toward the Community Outcomes.