

## INTRODUCTION AND OVERVIEW

### REPORT FROM MAYOR AND CHIEF EXECUTIVE

Thank you for taking the time to read the Hauraki District Council 2007/08 Annual Report.

The Annual Report demonstrates Councils performance for the year, 1<sup>st</sup> July 2007 to 30<sup>th</sup> June 2008, and reports against the Hauraki Community Plan 2006-16.

It has been an eventful year, and on reflection it is pleasing to see that as a Council we have been successful with a number of major challenges and initiatives that have faced us.

#### *Key happenings during the year*

##### **Council Elections**

In October 2007, elections took place and we farewelled Councillors George Gray, Don Lockwood, Keith Trembath, Ian Troughton and the late Bronwyn Wightman. We welcomed Councillors Colin Francis, Greg Harris, Gill Leonard, Harry Shepherd and James Thorp on board.

##### **Building Control Act Accreditation**

The Building Control Act Accreditation process has been a major undertaking for all Councils nationwide. Councils are required to become formally accredited following independent verification that their building activity processes are sound. Hauraki District Council became accredited on 13 May, 2008, well ahead of the March 2009 deadline, and was 29<sup>th</sup> out of all local authorities nationwide to do so.

##### **Bylaws Review**

The Bylaw Review process has taken a reasonable amount of time for Council. The review of 102 bylaws and bylaw parts, some of which dated back to 1923, has been completed with the result being a single consolidated bylaw with the final part adopted in January this year.



*John Tregidga  
Mayor*

*Langley Cavers  
Chief Executive*

##### **Water Restrictions**

From an infrastructural perspective, early 2008 brought challenges of a natural kind to not only the District, but nationwide. Drought across the District required significant water restrictions to be put in place, particularly during the months of January to March. Farmers especially across the District felt the severity of the drought.

##### **Progression towards Community Outcomes**

This year the Annual Report continues to identify the progress made towards achieving the Community Outcomes identified in 2006. Council has made good progress towards these strategic community goals including:

- Focusing on youth leadership and development through holding events such as a Youth Leadership Camp and Youth Citizens Awards.
- Working collaboratively with neighbouring authorities in many aspects of planning and implementation.
- Reviewing the Gambling Policy, the Sale of Liquor Policy and the Dog Control Policy.
- Adopting a Domestic Violence Policy.
- Holding of E-Day on the 29<sup>th</sup> September 2007 for the recycling of electronic waste.
- Coordination of the Healthier Homes for Hauraki initiative.

## Annual Report 2007/08

---

- Continuation and completion of the Paeroa Streetscape project.
- Progression of the recycling initiative resulting in some urban households now being able to separately put out recyclable materials with their refuse for kerbside collection.
- Completion of a 14 site subdivision at Kerepehi for purposes of industrial growth.

### *Other key happenings during the year*

Intentionally, 2008 has been more a year for continuing projects rather than beginning too many new ones. These included -

- The completion of the second stage of the accelerated kerb and channelling programme to enhance the appearance of some parts of the District. 4.3km of kerb and channel was constructed in 2007/08 totalling approximately 7.3km since the beginning of the programme in 2006/07.
- Adopting a Development Contributions Policy.
- Completion of Community Triennial Survey in November 2007.
- Upgrade of the rocket slide at Victoria Park, Waihi.
- Additional Foreshore protection works at Waitakaruru to provide agreed protection levels.
- The renewal of stormwater lines in Marshall Street and Wharf Street, Paeroa.

- The completion of a new water main installation from Kerepehi to Bush Road.
- Implementation of a number of changes at the District Libraries including increased programmes particularly for school aged children and improvements in the DVD collection. The preliminary design of the Waihi Library extension has also been scoped and it is expected that further consideration and consultation on the detail of the extension will take place in 2008/09.
- Significant progress with the Asset Management Plans for all key assets in the lead up to the Long Term Council Community Plan 2009-19.

Thank you for taking the time to read our Annual Report. We look forward to working with you in 2008/09.

John Tregidga  
Mayor

Langley Cavers  
Chief Executive

## **COUNCIL OVERVIEW**

### *Hauraki District Council's Mission*

To ensure the successful -

- *Provision of services and facilities,*
- *Advocacy on behalf of the community,*
- *Use and management of resources,*

... for all who live in or visit the Hauraki District.

### *Hauraki District Council's Vision for the Future*

- *A range of services and facilities meeting the community's needs and realistic expectations;*
- *A positive climate which encourages balanced and sustained growth throughout the district;*
- *An environment which encourages vibrant communities and an enhanced quality of life;*
- *The wise use and management of all resources for the continued benefit of the district;*
- *A proactive Council that provides leadership, is results orientated and communicates effectively with all sectors of the community.*

## ***ELECTED MEMBERS GUIDE***



### ***Mayor***

Mr. John Tregidga, J.P.

(07) 862 8956

To discuss any issues or raise any concerns considered important, Elected Members can be contacted by telephone or alternatively by email at [info@hauraki-dc.govt.nz](mailto:info@hauraki-dc.govt.nz) or by mail to Hauraki District Council, P O Box 17, Paeroa.

### ***Paeroa Ward***



Mrs. Julie Bubb, J.P.  
(07) 862 7188



Mr. Tom Meyers  
(07) 862 8685



Mr. Paul Milner  
(07) 862 8653



Mr. James Thorp  
(07) 862 7782

### ***Plains Ward***



Mr. Don Challis, J.P.  
(07) 867 7097



Mr. Bruce Gordon  
(07) 867 7436



Mr. Greg Harris  
(0274) 851 072



Mrs. Gill Leonard, J.P.  
(07) 867 7535

### ***Waihi Ward***



Mr. Sel Baker, J.P.  
(07) 863 8683



Mrs. Mary Carmine  
Deputy Mayor  
(07) 863 8740



Mr. Colin Francis  
(07) 863 7644



Mr. Mike Hayden  
(07) 863 7292



Mr. Harry Shepherd  
(07) 863 7589

## **STANDING COMMITTEES**

The Mayor is appointed as an ex-officio member to all Council Committees and Subcommittees, except the Hearings Committee.

### *Ward Committees*

The Council has three Ward Committees that deal with local community issues (predominately non-infrastructure assets) specific to their Ward – Plains, Paeroa and Waihi. All three Ward Committees meet on the third to last Tuesday of each month at the Paeroa Office, at 9.00am, 12.30pm and 2.30pm respectively.

### *Hearings Committee*

The Hearings Committee handled matters relating to the Resource Management Act, including consents, monitoring and enforcement. Hearings on matters relating to dogs were also dealt with.

The Hearings Committee meet on the second to last Thursday and fourth to last Thursday of each month, as required. Members are:

- Mary Carmine (Chairperson)
- Bruce Gordon (Deputy Chairperson)
- Julie Bubb
- Gill Leonard

### *District Plan Committee*

The District Plan Committee handled matters relating to District Plan Changes, the District Plan Review and Resource Management Policy issues.

The District Plan Committee meet on the second Monday of each month, as required. Additional meetings were programmed during the lead up to the notification of the Proposed District Plan. Members are:

- Bruce Gordon (Chairperson)
- Julie Bubb
- Mary Carmine
- Greg Harris
- Mike Hayden
- Paul Milner

### *Consultative Committee Water and Waste*

This committee was established to manage the consultation required with special interest groups within the district regarding water and waste issues.

Meetings were held on the fourth to last Tuesday of every second month at the Paeroa office at 10.00am. Members are:

- Sel Baker (Chairperson)
- Don Challis (Deputy Chair)
- Greg Harris (Committee Member)
- Tom Meyers
- Te Ruunanga A Iwi O Ngati Tamatera (R Brownlee and T Nicholls)
- Ngati Maru Iwi Authority (W Peters)
- Ngati Tara Tokanui Management (C Karu)
- Te Kupenga O Ngati Hako (T Wikiriwhi, B Clarkin, L Holtz)

- Te Runanganui O Ngati Paoa (P Jackson)
- Hauraki Maori Trust Board (J Anderson)
- Hauraki Coromandel Federated Farmers (K Trembath, R Corlett)
- Royal Forest and Bird Protection Society (D Welsh)

### *Other Committees*

Council also had the following Standing Committees that meet only as and when required:

- Audit
- Pensioner Flats Allocation
- Councillor Remuneration
- CEO Performance Assessment
- Economic Development
- Tetley's Quarry
- Waihi Beach Leasehold Properties Sub-committee
- District Reserve
- Council Organisations Appointments Sub-committee

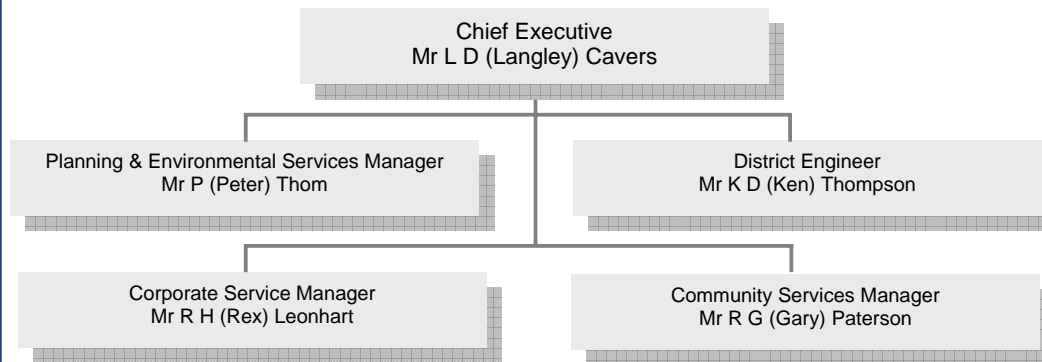
- Sport and Recreation (Harry Shepherd)
- Rooding (Tom Meyers)
- Community Services (Julie Bubb)
- Economic Development (Mike Hayden)
- Iwi Liaison (John Tregidga)
- Solid Waste (Greg Harris)
- Water and wastewater (Don Challis, Deputy – Greg Harris)
- Social Development (Gill Leonard)
- Youth (Paul Milner)
- Civil defence (Colin Francis)
- Heritage, arts and culture (James Thorp)

### *Portfolios*

Council has elected member portfolio holders for particular Council activities. The portfolio holders have a responsibility to interact with the community and Council staff on matters relating to the portfolio, the function of the position and the key legislation involved in the portfolio. The portfolios are one of Governance rather than of day to day operations and monitoring. Portfolio holders are:

- Finance (Bruce Gordon)
- Policy (Mary Carmine)
- Property (Sel Baker)

*Management Team*



*Business Units Board of Management*

Members of the Board	Business Unit Managers
<p><b>Chief Executive:</b> Mr. L D (Langley) Cavers (Chairperson)</p> <p><b>District Engineer:</b> Mr. K D (Ken) Thompson</p> <p><b>Corporate Services Manager:</b> Mr. R H (Rex) Leonhart</p>	<p><b>Construction &amp; Maintenance Manager:</b> Mr. M A (Mike) Voykovich</p> <p><b>Technical Services Manager:</b> Mr. A (Adrian) De Laborde</p> <p><b>Tetley's Quarry Manager:</b> Mr. A (Alan) Smith</p> <p><b>Workshop Manager:</b> Mr. P (Peter) Smith</p>

## COMMUNITY OUTCOMES

As stated in the Hauraki Community Plan 2006-16 (Long Term Council Community Plan), Council undertook an extended consultation process with the Hauraki Community to identify Community Outcomes. These Community Outcomes are collective statements of community goals and aspirations – ‘the things that the community thinks are important for its well-being’.

These community outcomes were gathered from the Hauraki community by a variety of consultation processes including forums, telephone surveys, and primary school competitions. Further opportunities to provide input were available via the internet and local newspaper. The consultation process proved very successful.

*The following Community Outcomes were identified -*



### **Vibrant and sustainable businesses and business economies in our District -**

- We encourage further development of our District's CBD's economic viability.
- We support entrepreneurs and leaders to proactively drive planned growth strategies and community business within our District.
- We encourage planned and developed infrastructural services and facilities to sustain our communities' growth.
- We encourage further development of tourism opportunities and facilities focusing on our heritage and eco-tourism.

### **Integrated provision of quality health and social services throughout our District -**

- Our community seeks the improvement of mechanisms for co-ordination, delivery, communication and education by health and social service providers.
- We support the development of new initiatives that address well-being of those in need and of our community in general.

### **Maintain and protect the vibrancy of rural communities within our District -**

- Our communities support the viability of maintaining our rural lifestyles and values.
- Protecting the viability of our land for primary production.

### **Cultural values of tangata whenua throughout the District be respected and supported through further development of consultation, participation and partnerships -**

- We encourage the development of culturally appropriate programmes and processes.
- We encourage service providers to develop partnerships that assist with capacity building of our tangata whenua to participate in decision-making processes.



**Our Hauraki youth be provided with greater opportunities to participate in the decision-making processes pertaining to the development of our communities -**

- We support the wider community and organisations to encourage and engage youth to actively participate.
- We need to understand, identify and address specific issues relating to our youth.

**We encourage increased opportunities to participate in recreational, sporting and cultural activities -**

- Our recreational, cultural and heritage groups work together to identify issues that lead to better efficiencies, access and sustainable solutions.
- We encourage better utilisation of existing infrastructure and resources.
- We support planning for our culture and heritage where initiatives can be actively co-ordinated to ensure sustainability.

**Management of our natural and physical environment in a sustainable manner -**

- We encourage a balance between economic growth and environmental protection and enhancement.
- We support the development of land use planning controls that allow for economic growth in a sustainable manner.
- We support protecting our significant habitats and ecosystems.

**Hauraki District residents be given the opportunity to participate in the educational and training programmes -**

- We encourage better communication and co-ordination between education providers.
- We support the need for improvement on the transition between educational levels to allow further training and work opportunities.

**Long term planning ensures that our future infrastructure requirements meet the growth and development opportunities of our District -**

- We want to have our say on our District's future.
- We value the provision of infrastructural services in our District to be well-managed .

*Monitoring Community Outcomes*

As detailed in the Hauraki Community Plan 2006-16, Council is required to report to its community in a three yearly monitoring report, on how each of the Hauraki Community Outcomes have been worked towards. This allows the community to see how agencies as a whole are addressing the priorities the community has identified as being important. The development of the first complete Hauraki Community Outcomes Monitoring report will begin in 2009.

In the interim, Council is required to report annually on its own activities that have contributed to the Hauraki Community Outcomes. Within this Annual Report, each of Council's activities demonstrates how particular projects have contributed to the Hauraki Community Outcomes. Furthermore a number of indicators have been reported on to demonstrate Councils own progress toward the Community Outcomes.