

Figure 5: Aerial photo of Waihi showing collapse areas, the open pit and probabilistic hazard zones – circles around shafts, elongated areas above lodges (from the August 2002 GNS Report). The Edward South hazard zones were changed in the 2003 GNS report and 'Martha' stopes have been added - this report.

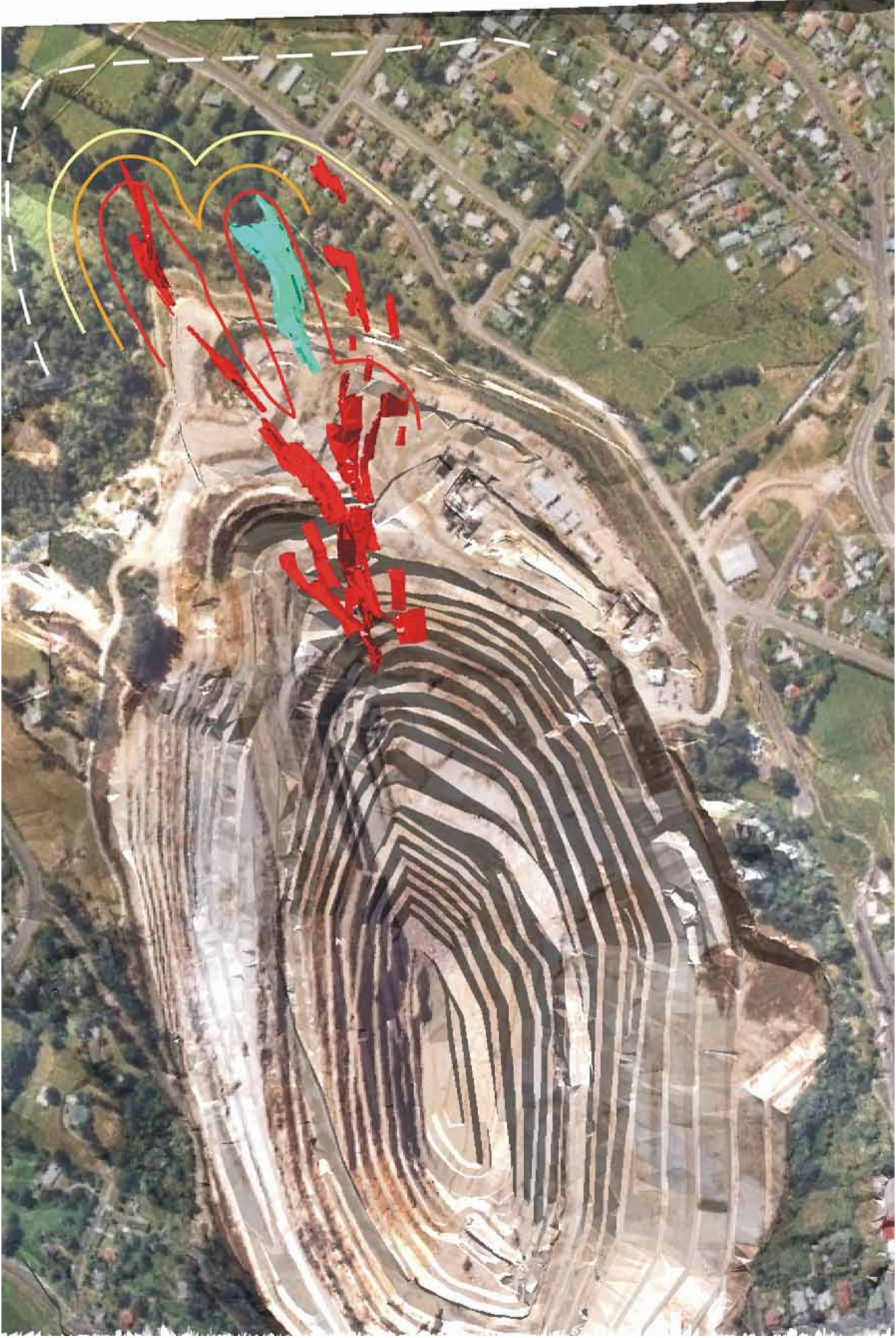


Figure 5a "Martha" slopes showing detailed sinkhole hazards zones

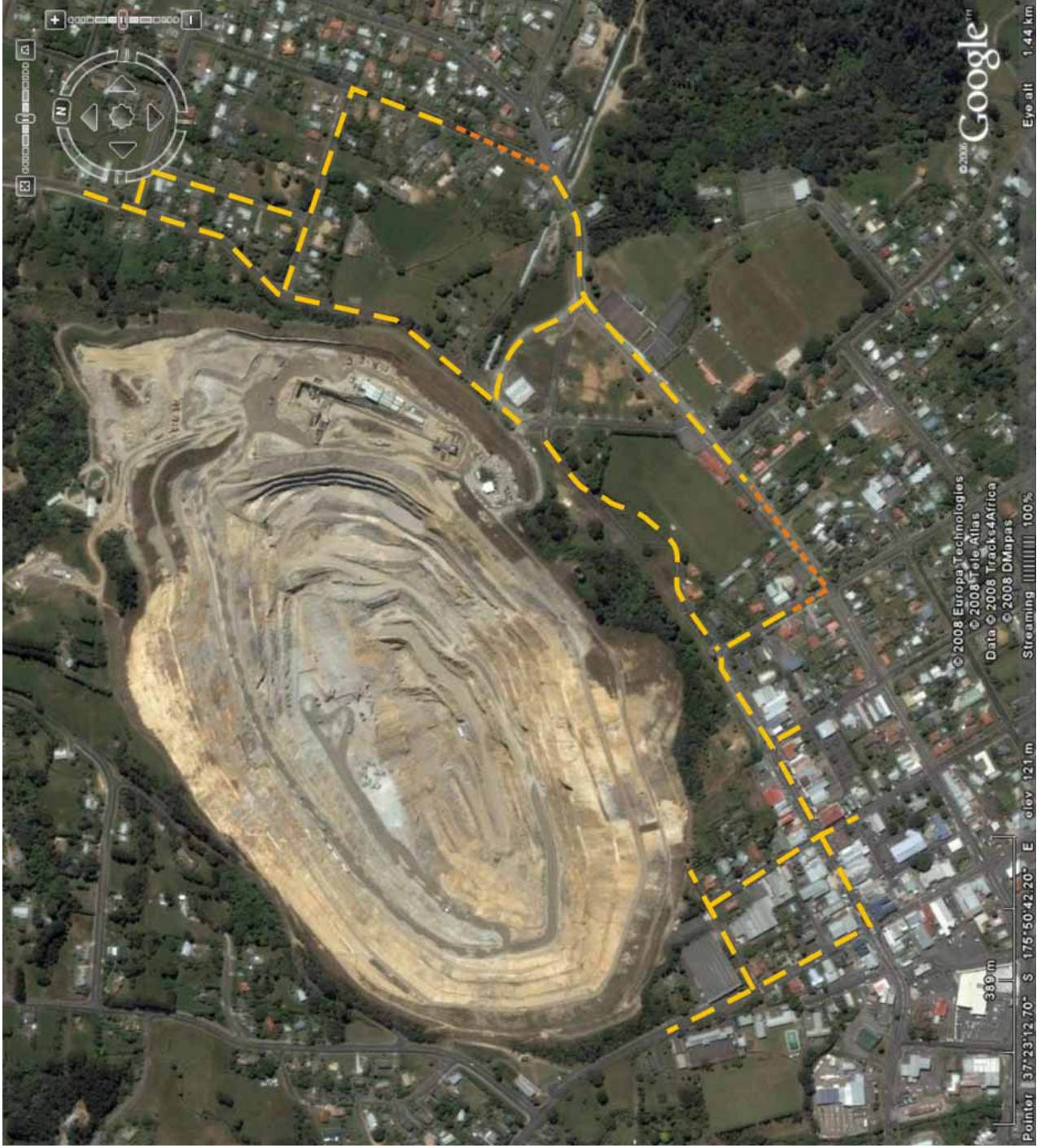


Figure 5b Yellow dashed lines show recommended monitoring lines with points at ~20m spacing and incorporating as many existing settlement monitoring points as possible (Figure 7 & 7a). Orange dashed lines are linking lines using existing points.