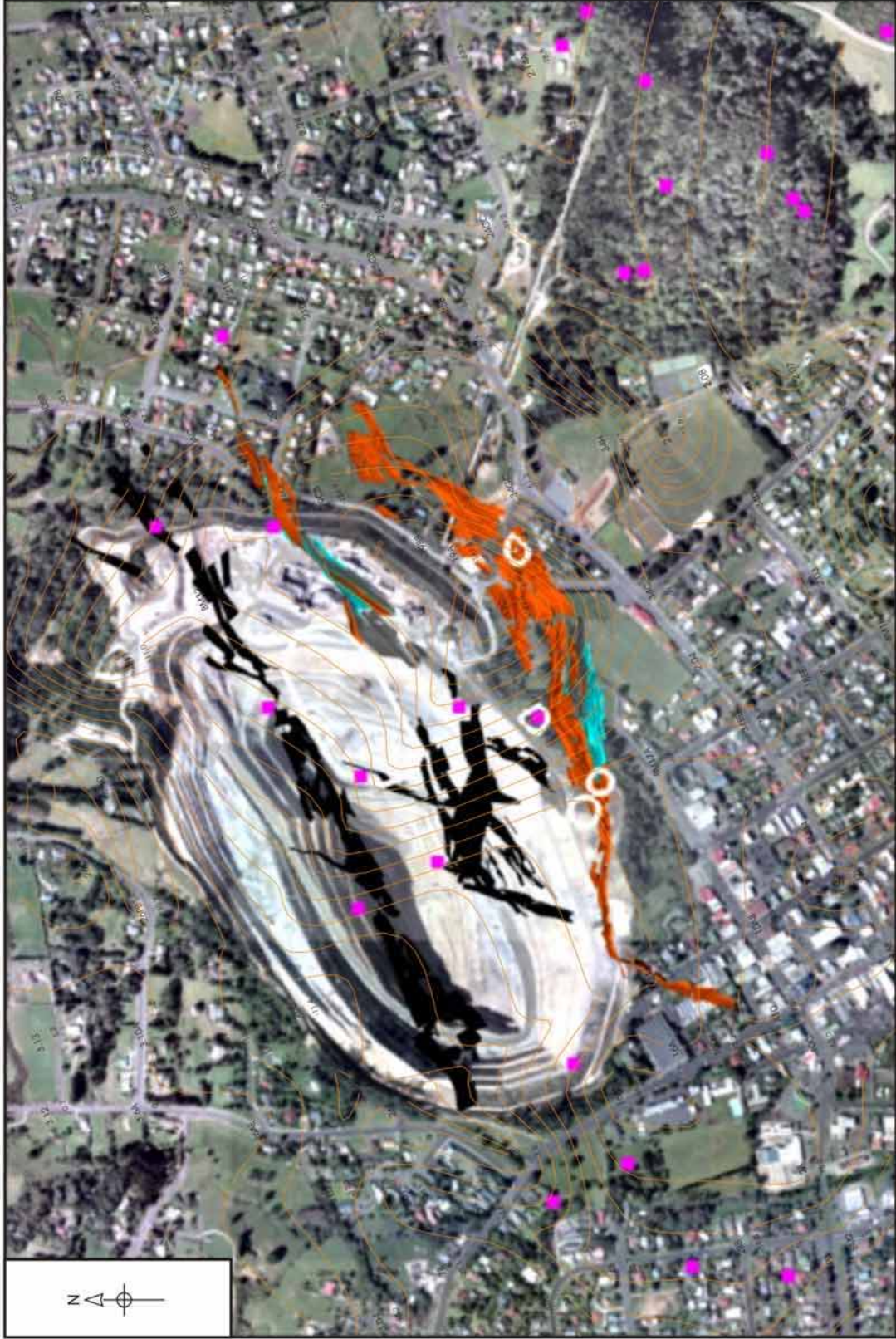


The angle of draw is the angle between the vertical line at the edge of the mine opening and the line connecting the opening edge to the limit of significant ground displacement. It is typically in the range from 10 to 30 degrees  
 The angle of break is the angle between the vertical line at the edge of the mine opening and the line connecting the opening edge to the point of maximum tensile strain at the surface. It is typically 5 to 15 degrees.

**Figure 6** Definition of angles of draw and break (As Fig. 41 in the August 2002 GNS report.).



**Figure 7** Total ground settlement contours (orange), settlement values (mm) and survey points, with stops, shafts and collapses (white) (As Fig. 42 in the August 2002 GNS report).

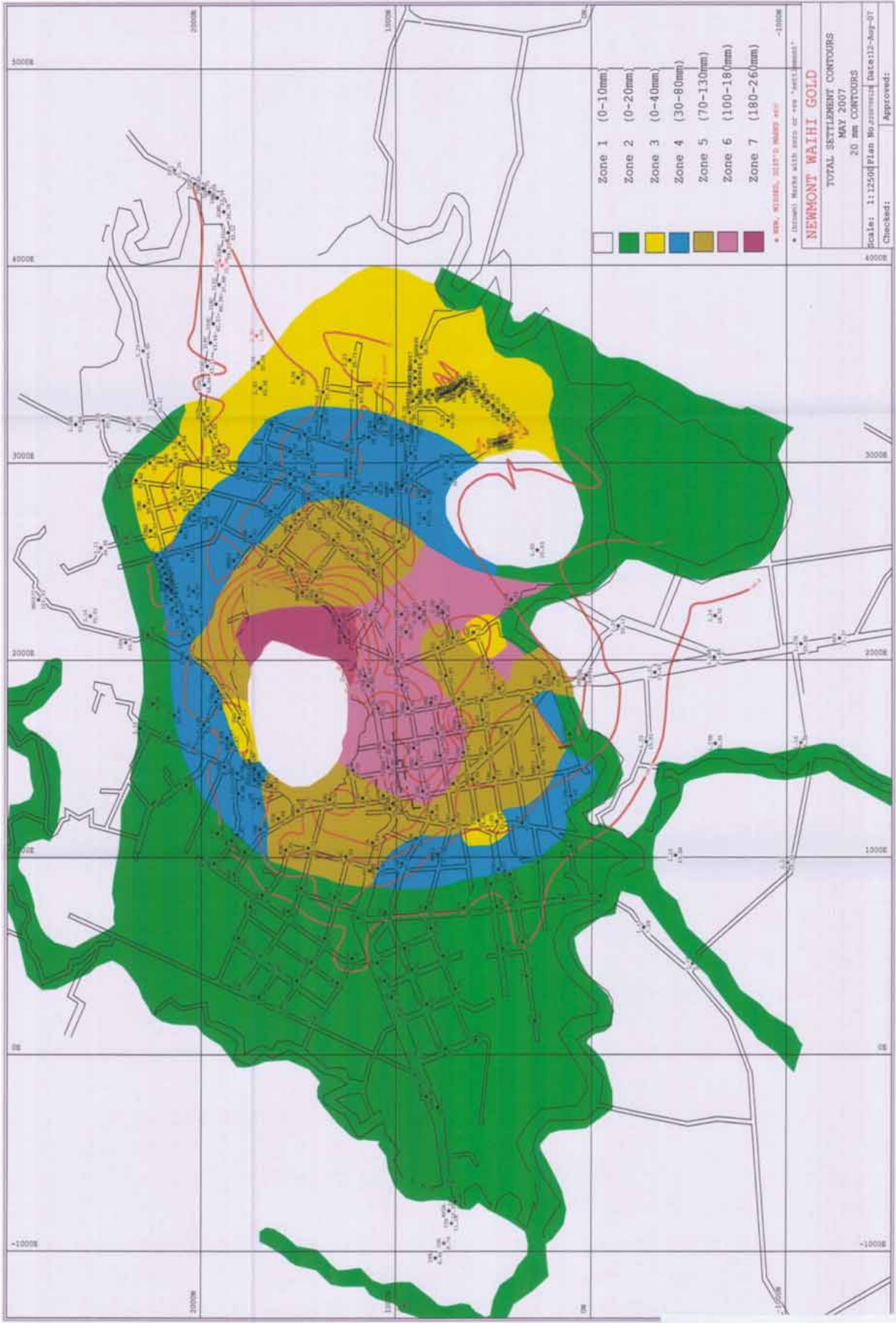


Figure 7a. Existing settlement monitoring points in Waihi with settlement zones due to dewatering. The points are monitored only for vertical movement. Those incorporated in the monitoring lines also need to be accurately surveyed for lateral movement.