

Figure 8 (From Fig. 11 in the August 2002 GNS report.) Cross-section A-A' through the Royal stopes at the 1999 collapse. Probabilistic hazard zonation is shown illustrating buffer technique employed in this study.

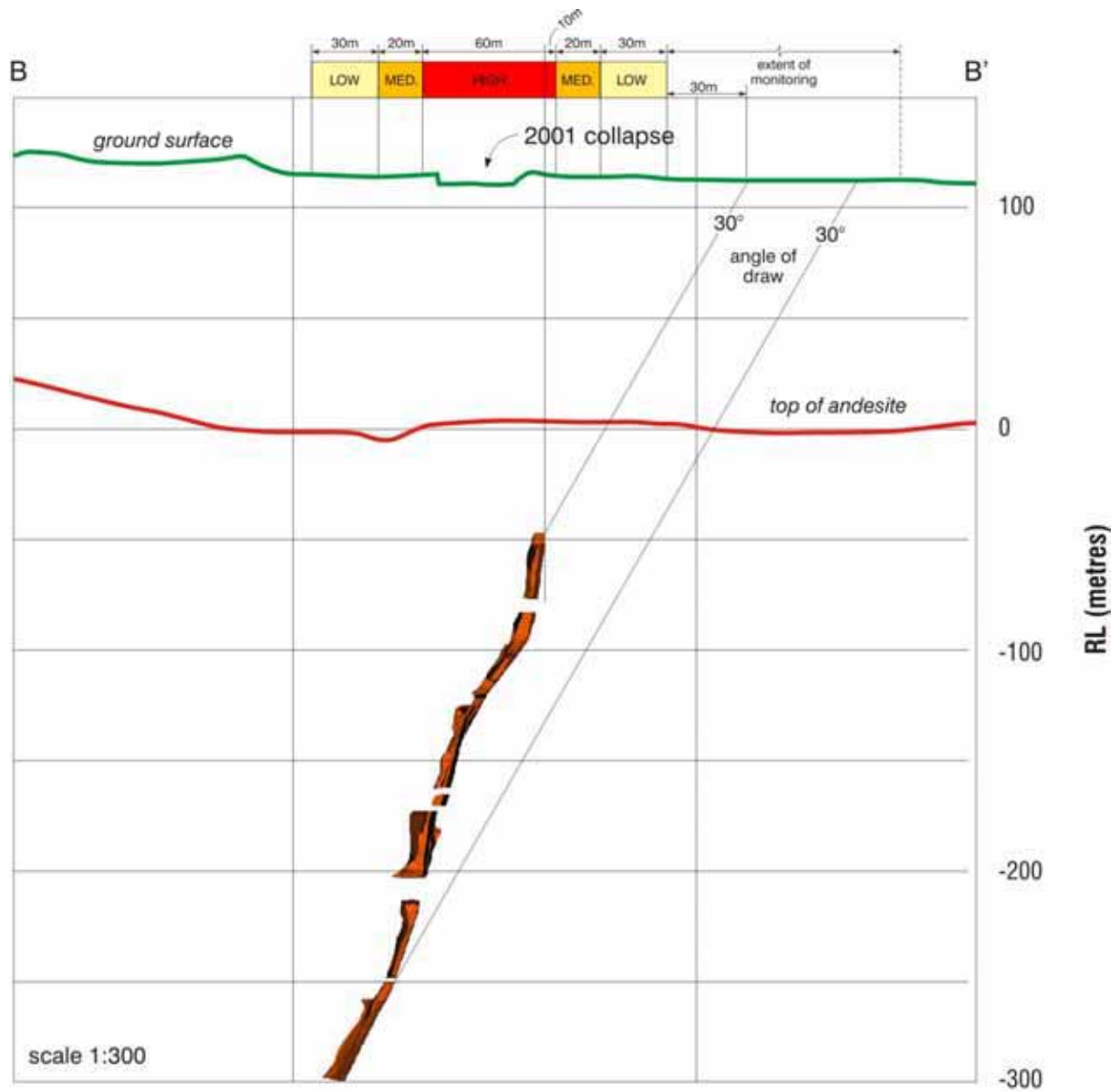


Figure 9 (From Fig. 12 in the August 2002 GNS report.) Cross-section B-B' through the Royal stopes at the 2001 collapse. Probabilistic hazard zonation is shown illustrating buffer technique employed in this study.

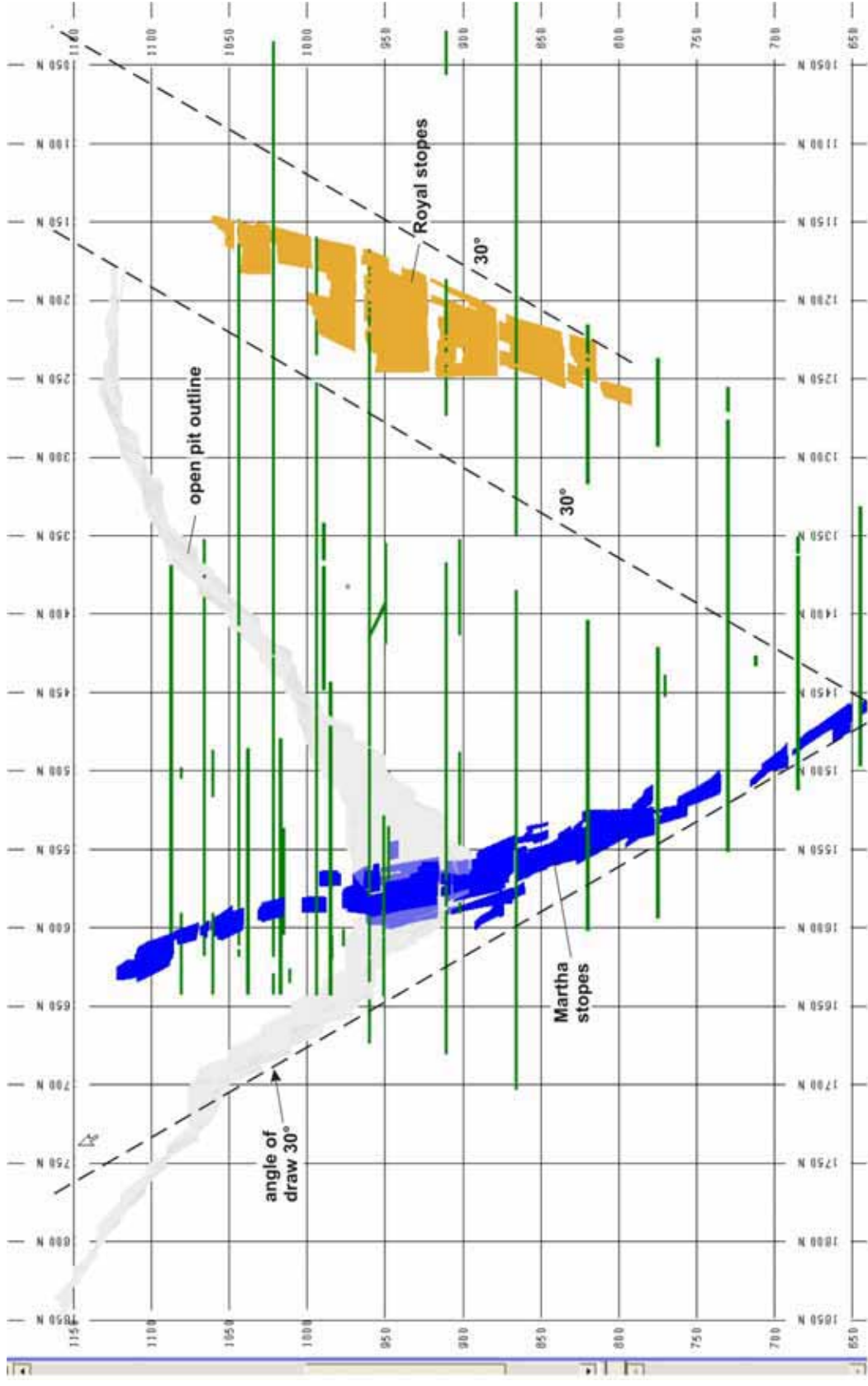


Figure 10 General section through Martha and royal Stopes.