

**DISTRIBUTION:**

**Committee Members:**

His Worship the Mayor  
R P Hunter  
K R Caddy  
K J Reid  
P Schouten  
R Webster  
A Green  
T Nicholson  
B Conroy

**Council Rep:**

J H Thorp

**Councillors:**

B A Gordon  
D H Swales  
G R Leonard (observer)

**Staff**

Ian McLeod  
Bruce Stephens  
Ken Thompson  
Council Secretary



**A G E N D A**  
**EASTERN PLAINS DRAINAGE**  
**DISTRICT COMMITTEE**

**DATE:** Tuesday 27 October 2015

**TIME:** 1.30pm

**VENUE:** Council Office  
Williams Street  
PAEROA

**MEMBERS:**

R P Hunter (Chairperson)

K R Caddy  
K J Reid  
P Schouten  
R Webster  
A Green  
T Nicholson  
B Conroy

J P Tregidga (Mayor)



# HAURAKI DISTRICT COUNCIL

## EASTERN PLAINS DRAINAGE DISTRICT

NOTICE IS HEREBY GIVEN THAT A MEETING OF THE EASTERN PLAINS DRAINAGE DISTRICT COMMITTEE WILL BE HELD IN THE COUNCIL CHAMBERS, WILLIAM STREET, PAEROA ON TUESDAY 27 OCTOBER 2015 COMMENCING AT 1.30PM

### ORDER OF BUSINESS

- |   | <u>Pages</u> |
|---|--------------|
| 1. <b><u>APOLOGIES</u></b>  |              |
| 2. <b><u>DECLARATION OF LATE ITEMS</u></b>  |              |
| Pursuant to Section 46A(7) of the Local Government Official Information and Meetings Act 1987, the Chairman is to call for late items to be accepted.                       |              |
| 3. <b><u>CONFIRMATION OF MINUTES</u></b>  |              |
| 3.1 <b><u>MEETING HELD TUESDAY 25 AUGUST 2015 (1406759)</u></b>   | <b>3</b>     |
| <b>RECOMMENDATION</b>   |              |
| THAT the minutes of the meeting of the Eastern Plains Drainage District Committee held on Tuesday 25 August 2015 are confirmed and are a true and correct record.           |              |
| 4. <b><u>MATTERS ARISING FROM THE MINUTES</u></b>   |              |
| 5. <b><u>DRAINAGE MANAGERS MONTHLY REPORT AND FINANCIAL REPORT FOR AUGUST – SEPTEMBER 2015 (1446890)</u></b>  | <b>5</b>     |
| 5.1 The Drainage Manager's monthly report and financial report on the operations of the Eastern Plains District Drainage Committee for August – September 2015 is attached. |              |
| <b>RECOMMENDATION</b>   |              |
| THAT the monthly report for August – September 2015 be received, and  |              |
| THAT the financial report on the operations of the Eastern Plains District Drainage Committee for August – September 2015 be received.                                      |              |
| 6. <b><u>GENERAL BUSINESS</u></b>   |              |
| 7.1 <b><u>MEMBERS' COMMENTS</u></b>   |              |
| The members are invited to comment on any general drainage issues of interest in their areas.   |              |
| 7. <b><u>LATE ITEMS</u></b>   |              |

**HAURAKI DISTRICT COUNCIL**  
**EASTERN PLAINS DRAINAGE DISTRICT**

MINUTES OF A MEETING OF THE EASTERN PLAINS DRAINAGE DISTRICT COMMITTEE  
HELD IN THE COUNCIL OFFICE, NGATEA SERVICE CENTRE, NGATEA ON TUESDAY 25  
AUGUST 2015 COMMENCING AT 1.10PM

**PRESENT** Messrs R Hunter (Chairperson), K J Reid, K R Caddy, T Nicholson,  
B Conroy, P Schouten, R Webster and B A Gordon

**IN ATTENDANCE** Cr J Thorp, Messrs Mr I McLeod (Drainage Manager), Mr B Stephens  
(Drainage Overseer) and Ms C Black (Council Secretary)

**APOLOGIES**

**RESOLVED**

THAT the apology of A Green be received and sustained.

EPDD15/08

Caddy/Schouten

**CARRIED**

**LATE ITEMS**

There were no late items.

**CONFIRMATION OF MINUTES**

MEETING HELD TUESDAY 28 APRIL 2015 (1360898)

**RESOLVED**

THAT the minutes of the meeting of the Eastern Plains Drainage District Committee held  
on Tuesday 28 April 2015 are confirmed and are a true and correct record.

EPDD15/09

Thorp/Caddy

**CARRIED**

**MATTERS ARISING FROM THE MINUTES**

Plastic Bag Waste

The plastic bag waste that has been discarded when the dumping of bread has been carried out  
by a contractor. It appears to have reduced but the committee requested that the contractor be  
written to noting the Committee's concerns about the waste accessing waterways. The Drainage  
Manager will speak with the contractor and advise of the Committees concerns.

Slips in Prices Drain

The slips are to be checked by the Drainage Overseer.

**DRAINAGE REPORT AND FINANCIAL REPORT TO 2015 (1400286)**

The Drainage Manager's monthly report and financial report on the operations of the Eastern Plains District Drainage Committee for the 12 months to 30 June 2015 was presented.

**RESOLVED**

THAT the monthly report to 2015 be received, and

THAT the financial report on the operations of the Eastern Plains District Drainage Committee for the 12 months to 30 June 2015 be received.

EPDD15/10

Reid/Webster

**CARRIED****GENERAL BUSINESS**Meeting Start Time

It was advised the meetings will start at 1.00pm as per meeting schedule on the Council website.

MEMBERS' COMMENTS

The members were invited to comment on any general drainage issues of interest in their areas.

Keven Caddy – need to do a silt check on the Harris/Caddy and Reservoir drains.

Roger Hunter - commented that the water in Cox's drain was very clear. He also stated that the Campbell Drain silt which was a result of the floodgate failure will need to be cleared by Waikato Regional Council.

Kim Reid – noted that the Regional Council had let the tide into H Drain to run the pump's but had not notified anybody.

Cr Gordon – advised that a resident of Kerepehi Town Road had complained about flooding from the cut down kerb. Staff will follow up.

The meeting closed at 2.00pm.

CONFIRMED

R G Hunter  
Chairperson

27 October 2015



# Report

**To:** Eastern Plains Drainage District Committee  
**From:** Drainage Manager  
**Date:** 19 October 2015  
**File reference:** Document: 144 6890  
**Meeting date:** 27 October 2015  
**Subject:** **EPDD Drainage Manager Report August-September 2015**

## Recommendation:

THAT the report be received.

## 1.0 OPERATIONS

### 1.1 Chemical spraying

No drains have been sprayed in the months to date.

### 1.2 Machine cleaning

Only 300m of drain has been machine cleaned.

### 1.3 Maintenance/Fencing/Culverts

A culvert on Ferry Road was cleared. A blocked culvert in the Simpson Drain was cleared. A blockage was cleared from the South Catchment Drain.

### 1.4 Pump operation

Regular inspection runs were undertaken in this period. Pump hours for August and September were 1,228 and 1,642. The total of 3,922 to the end of September is 64% of the average annual hours.

Twenty six man-hours were spent on screen cleaning in August, and 20 in September.

### 1.5 Floodgates

Floodgate inspections were completed. H-Drain, Mill Creek and Jubilee floodgates were cleared in August, and June, and Louch McDuff and Johnstone Internal gates were cleared in July..

### 1.6 Stopbanks

Survey of the Terrace stopbanks on the east side of the Piako Rver, between Kerepehi and Kopuarahi will be undertaken by Council's Technical Services staff. In the August/September event some overtopping of the Price stopbank was observed.

**2.0 BY-LAW APPROVALS**

Bylaw approvals were granted in the period as follows:

- 2.1 Culverts: Ball, Captain Cook Drain, Netherton (Two)
- 2.2 Building Line Nil.

**3.0 SUBDIVISIONS COMMENTED UPON**

Subdivisions commented on during the period were as follows:

Nil

**4.0 RAINFALL**

A table and graphs of the Ngatea Monthly Rainfall depths since 1993 is attached. The rainfall totals for August and September were 185 mm, and 96 mm respectively. The total for the year to date is 402 mm, which is 115% of the annual average.

**5.0 CAPITAL WORKS**

The Drainage Overseer expects the piping of Kerepehi Town Road, and the drain at the Kerepeehi marae to be completed early in the construction season.

**6.0 GENERAL**

November Meeting

Council’s strategic planning staff wish to present the 2016-17 Annual Plan budgets to the drainage committees in late November. It is proposed that all drainage committees will meet on the same day (Tuesday 24 November) for the budget presentation.

Attendance of Waikato Regional Council staff at drainage committee meetings

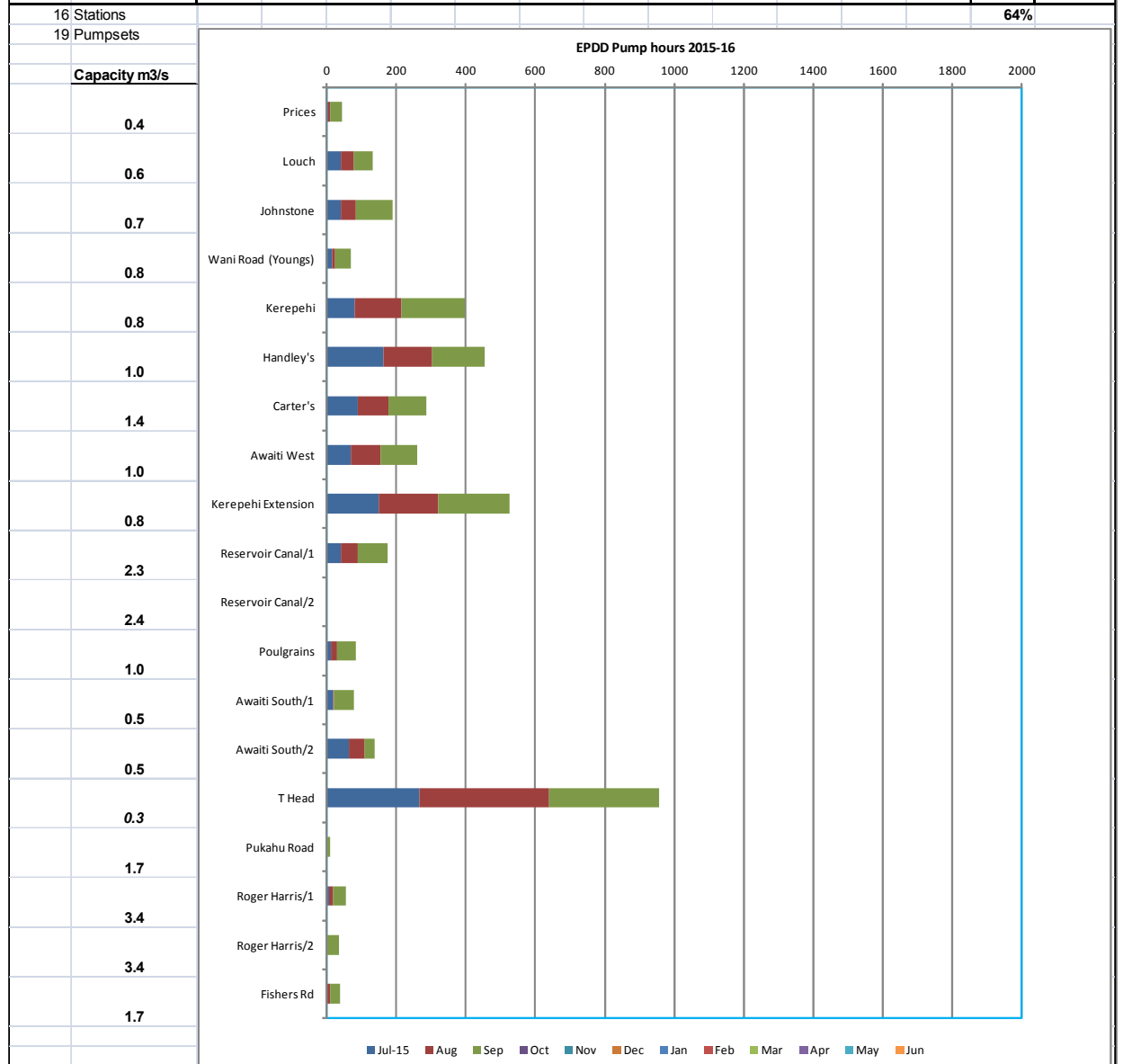
It is proposed that Waikato Regional Council staff be invited to attend the November meeting.

Ian McLeod  
Drainage Manager

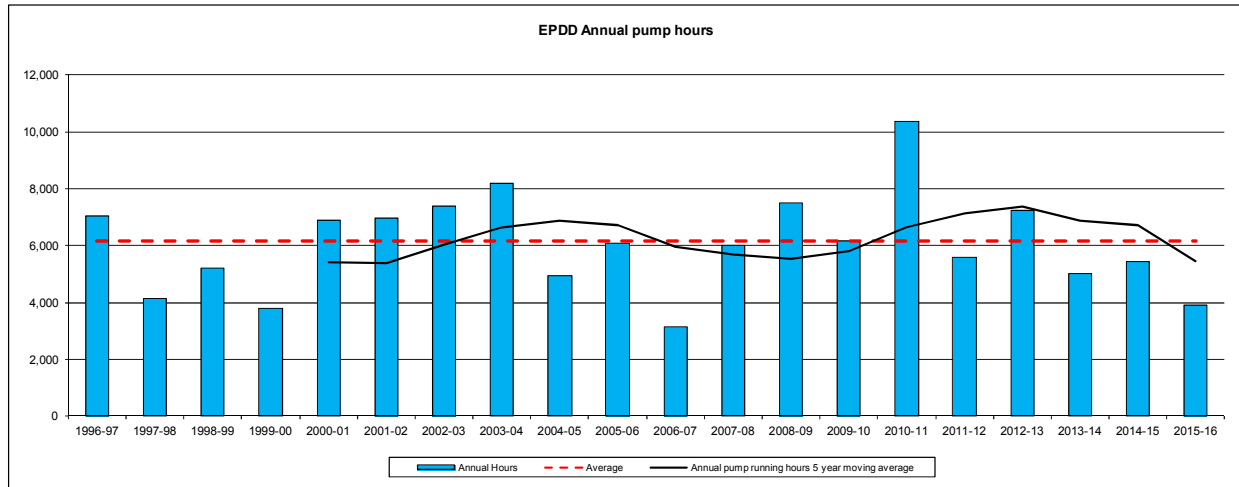
<b>STAFF CONTACT DETAILS</b>			
Drainage Manager	Ian (Mac) McLeod	07 862 5073	027 496 9558
		email:	<a href="mailto:mac@hauraki-dc.govt.nz">mac@hauraki-dc.govt.nz</a>
Drainage Overseer	Bruce (Goldy) Stephens		027 281 6924
		email:	<a href="mailto:goldy@hauraki-dc.govt.nz">goldy@hauraki-dc.govt.nz</a>

### EASTERN PLAINS DRAINAGE DISTRICT – PUMP RUNNING HOURS 2015-16

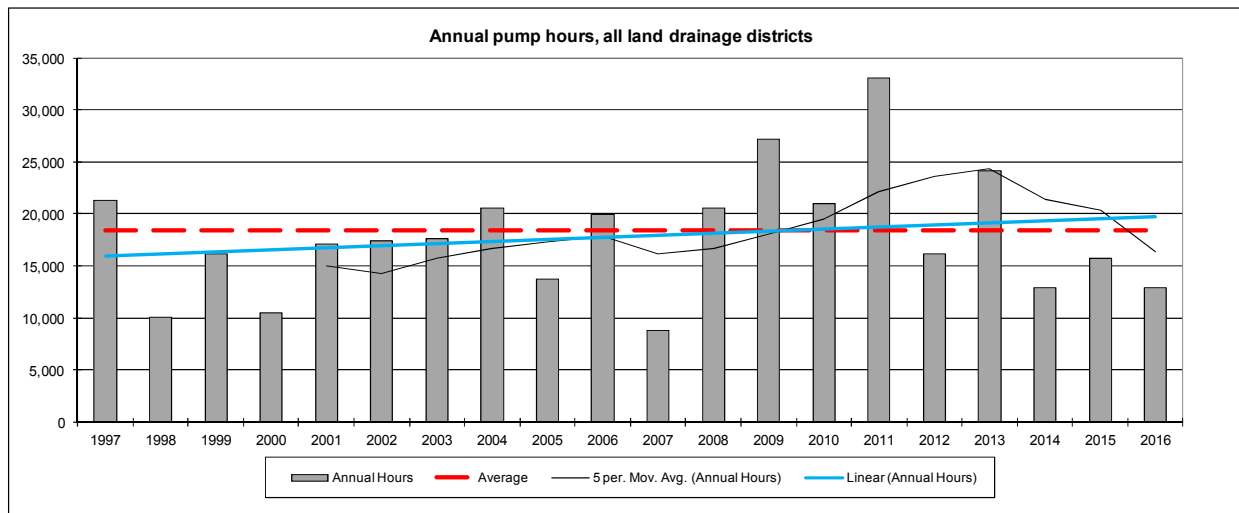
Eastern Plains DD		Jul-15	Aug	Sep	Oct	Nov	Dec	Jan	Feb	Mar	Apr	May	Jun	Total	Average
No 1	Prices	4	5	34										43	36
No 2	Louch	40	38	55										133	60
No 3	Johnstone	40	42	106										188	251
No 4	Wani Road (Young	14	9	46										69	249
No 10	Kerepehi	80	136	180										396	192
No 13	Handley's	163	140	152										455	377
No 14	Carter's	88	89	108										285	521
No 15	Awaiti West	68	87	105										260	639
No 16	Kerepehi Extensior	150	170	206										526	609
No 19	Reservoir Canal/1	40	50	86										176	325
	Reservoir Canal/2	0	0	0										0	10
No 20	Poulgrains	13	16	53										82	91
No 28	Awaiti South/1	19	2	57										78	172
	Awaiti South/2	62	46	29										137	167
No 32	T Head	266	375	315										956	2283
No 53	Pukahu Road	0	0	8										8	22
No 55	Roger Harris/1	5	14	36										55	47
	Roger Harris/2	0	0	36										36	83
No 61	Fishers Rd	0	9	30										39	32
		<b>1052</b>	<b>1228</b>	<b>1642</b>	<b>0</b>	<b>0</b>	<b>0</b>	<b>0</b>	<b>0</b>	<b>0</b>	<b>0</b>	<b>0</b>	<b>0</b>	<b>3922</b>	<b>6165</b>



### EASTERN PLAINS DRAINAGE DISTRICT, ANNUAL PUMP RUNNING HOURS

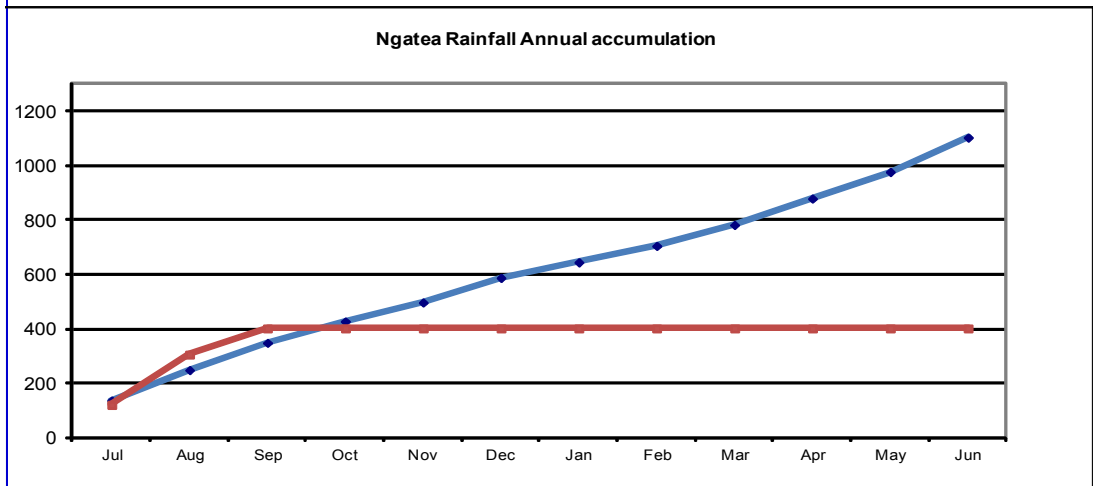
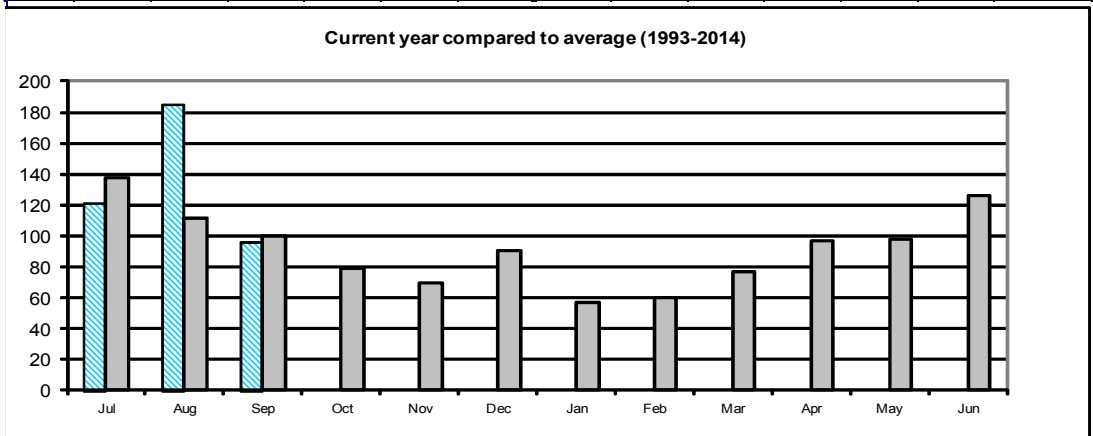


### ANNUAL PUMP RUNNING HOURS, ALL DISTRICTS





Ngatea Monthly Rainfall														Haywards Road (to 1999). HDC Depot (2000 on)
Year	Jan	Feb	Mar	Apr	May	Jun	Jul	Aug	Sep	Oct	Nov	Dec	Totals	
1993	36.0	28.5	95.0	50.0	123.0	181.5	8.0	111.0	58.0	37.0	100.0	28.5	857	
1994	81.0	47.5	51.5	64.0	78.0	116.0	155.0	100.5	153.0	112.5	30.0	26.5	1016	
1995	37.0	71.0	196.5	245.5	88.5	181.0	203.5	74.0	73.0	94.0	136.5	128.5	1529	
1996	29.5	89.5	88.5	227.5	82.0	166.5	137.5	147.0	149.0	34.0	72.5	222.0	1446	
1997	4.5	51.0	195.0	58.0	97.5	138.5	64.5	65.5	221.5	61.0	39.0	49.0	1045	
1998	12.0	97.0	67.0	48.0	56.5	97.0	299.0	104.0	48.0	100.0	85.0	89.0	1103	
1999	81.0	28.0	81.0	91.0	45.0	94.5	142.0	132.0	88.0	53.0	206.5	109.5	1152	
2000	60.0	11.5	52.5	171.0	85.0	75.5	154.5	114.0	97.5	48.0	96.5	79.0	1045	
2001	16.5	156.5	49.0	169.0	165.5	50.0	74.5	121.0	47.5	134.0	114.0	177.0	1275	
2002	117.0	39.5	50.5	62.0	61.0	168.5	135.0	79.0	75.5	73.0	34.5	54.0	950	
2003	110.0	105.0	102.0	134.0	73.0	124.5	101.5	58.5	155.0	107.0	36.5	111.5	1219	
2004	98.5	230.0	11.5	21.0	175.5	106.5	120.5	112.0	119.0	80.0	56.0	130.5	1261	
2005	30.5	32.0	32.5	7.0	147.5	118.0	152.5	59.0	87.0	145.5	65.5	107.0	984	
2006	37.0	47.5	34.5	120.0	82.0	86.0	76.0	108.0	57.0	90.5	64.0	36.0	839	
2007	56.0	27.0	146.0	45.0	41.0	92.0	281.0	95.0	68.5	76.0	40.0	53.0	1021	
2008	2.0	35.0	40.5	146.5	71.0	152.5	253.0	166.0	52.0	94.0	47.0	61.0	1121	
2009	59.0	120.0	30.0	72.0	91.0	150.0	124.0	91.0	85.0	119.0	35.0	81.0	1057	
2010	63.0	4.0	13.0	44.0	139.0	230.5	90.0	229.0	146.0	18.0	28.0	62.0	1067	
2011	270.0	9.0	172.0	85.0	101.0	110.0	127.0	57.0	74.0	76.0	15.0	157.0	1253	
2012	63.0	82.0	130.0	39.0	111.0	52.0	179.0	130.0	85.0	69.0	71.0	64.0	1075	
2013	2.0	17.0	23.0	128.0	162.0	117.0	48.0	122.0	133.0	41.0	104.0	96.0	993	
2014	41.0	8.0	35.0	98.0	42.0	237.0	109.0	110.0	137.0	73.0	50.0	72.0	1012	
2015	10.0	44.0	79.0	114.0	136.0	59.0	121.0	185.0	96.0				844	
2016													0	
Ave.	57	60	77	97	98	126	137	112	100	79	69	91	1104	
Max	270	230	197	246	176	237	299	229	222	146	207	222	1529	
Min.	2	4	12	7	41	50	8	57	48	18	15	27	839	
Kim's							105	158	84				347	



<b>Eastern Plains Drainage District</b>						
<b>Financial Report for 3 months to 30 September 2015</b>						
<b>Item</b>	<b>Total Budget</b>	<b>Budget YTD</b>	<b>Actual YTD</b>	<b>Variance</b>	<b>Actual % of YTD Budget</b>	<b>Actual % of Total Budget</b>
<b>DRAINAGE OPERATIONS</b>						
<b>Vegetation Control</b>						
Area 1	13,800	0	0	0		0%
Area 2	11,200	0	0	0		0%
Area 3	17,300	0	0	0		0%
Area 4	16,400	0	0	0		0%
Area 5	10,800	0	206	(206)		2%
<b>TOTAL</b>	<b>69,500</b>	<b>0</b>	<b>206</b>	<b>(206)</b>		<b>0%</b>
<b>Mechanical Cleaning</b>						
Area 1	10,000	0	0	0		0%
Area 2	11,600	0	0	0		0%
Area 3	4,000	0	0	0		0%
Area 4	35,400	0	0	0		0%
Area 5	11,200	0	0	0		0%
<b>TOTAL</b>	<b>72,200</b>	<b>0</b>	<b>0</b>	<b>0</b>		<b>0%</b>
<b>Maintenance/Fencing/Culverts</b>						
Area 1	680	170	0	170	0%	0%
Area 2	680	170	556	(386)	327%	82%
Area 3	680	170	0	170	0%	0%
Area 4	680	170	0	170	0%	0%
Area 5	3,680	920	450	470	49%	12%
<b>TOTAL</b>	<b>6,400</b>	<b>1,600</b>	<b>1,006</b>	<b>594</b>	<b>63%</b>	<b>16%</b>
<b>TOTAL DRAIN MAINTENANCE</b>	<b>148,100</b>	<b>1,600</b>	<b>1,212</b>	<b>388</b>	<b>76%</b>	<b>1%</b>
<b>Pumps</b>						
General	10,240	2,559	3,816	(1,257)	149%	37%
EPDD Pumps	54,100	18,440	29,201	(10,761)	158%	54%
<b>TOTAL</b>	<b>64,340</b>	<b>20,999</b>	<b>33,017</b>	<b>(12,018)</b>	<b>157%</b>	<b>51%</b>
<b>Floodgates</b>						
Floodgates	4,758	1,188	945	243	80%	20%
<b>TOTAL</b>	<b>4,758</b>	<b>1,188</b>	<b>945</b>	<b>243</b>	<b>80%</b>	<b>20%</b>
<b>Stopbanks</b>						
Tributary Banks	0	0	0	0		
<b>TOTAL</b>	<b>0</b>	<b>0</b>	<b>0</b>	<b>0</b>		
<b>Other</b>						
Weather Events	2,100	525	0	525	0%	0%
Asset Liaison	3,500	876	385	491	44%	11%
Consent Monitoring	0	0	0	0		
Data Collection	0	0	0	0		
Data Maintenance	3,054	762	0	762	0%	0%
Drain Inspection	4,500	1,125	539	586	48%	12%
Pump Operation	0	0	0	0		
Rates	0	0	0	0		
Meeting Expenses	2,700	675	270	406	40%	10%
Insurance	500	500	1,494	(994)	299%	299%
<b>TOTAL</b>	<b>16,354</b>	<b>4,463</b>	<b>2,688</b>	<b>1,775</b>	<b>60%</b>	<b>16%</b>
<b>TOTAL OPERATING</b>	<b>233,552</b>	<b>28,250</b>	<b>37,862</b>	<b>(9,612)</b>	<b>134%</b>	<b>16%</b>
<b>Overheads</b>						
Overheads	56,273	14,067	14,068	(1)	100%	25%
<b>TOTAL</b>	<b>56,273</b>	<b>14,067</b>	<b>14,068</b>	<b>(1)</b>	<b>100%</b>	<b>25%</b>
<b>Depreciation</b>						
Depreciation	25,900	6,474	6,474	0	100%	25%
<b>TOTAL</b>	<b>25,900</b>	<b>6,474</b>	<b>6,474</b>	<b>0</b>	<b>100%</b>	<b>25%</b>
<b>Interest</b>						
Interest	(7,850)	(1,962)	(1,962)	0	100%	25%
<b>TOTAL</b>	<b>(7,850)</b>	<b>(1,962)</b>	<b>(1,962)</b>	<b>0</b>	<b>100%</b>	<b>25%</b>
<b>TOTAL EXPENDITURE</b>	<b>307,875</b>	<b>46,829</b>	<b>56,442</b>	<b>(9,613)</b>	<b>121%</b>	<b>18%</b>

EASTERN URBAN STORMWATER						
Item	Total Budget	Budget YTD	Actual YTD	Variance	Actual % of YTD Budget	Actual % of Total Budget
<b>Turua</b>						
Vegetation Control	800	0	0	0		0%
Maintenance/Fencing/Culverts	1,000	250	41	209	17%	4%
Mechanical Cleaning	400	0	0	0		0%
Maintenance/Fencing/Culverts	400	99	0	99	0%	0%
<b>TOTAL Turua Drain Maintenance</b>	<b>2,600</b>	<b>349</b>	<b>41</b>	<b>308</b>	<b>12%</b>	<b>2%</b>
SW Reticulation	600	150	41	109	28%	7%
Floodgates	0	0	0	0		
<b>Other</b>						
Weather Events	0	0	0	0		
Routine Inspections	0	0	0	0		
Asset Liaison	400	99	77	22	78%	19%
Consent Monitoring	800	0	0	0		0%
Data Collection	0	0	0	0		
Data Maintenance	0	0	0	0		
Design	0	0	0	0		
Drain Inspection	800	201	231	(30)	115%	29%
Rates	3,000	0	0	0		0%
Meeting Expenses	0	0	0	0		
Insurance	1,000	500	531	(31)	106%	53%
<b>TOTAL</b>	<b>6,000</b>	<b>800</b>	<b>839</b>	<b>(39)</b>	<b>105%</b>	<b>14%</b>
<b>TOTAL OPERATING</b>	<b>9,200</b>	<b>1,299</b>	<b>921</b>	<b>378</b>	<b>71%</b>	<b>10%</b>
Overheads	11,755	2,940	2,939	1	100%	25%
Depreciation	17,200	4,299	4,299	0	100%	25%
Interest	2,968	741	741	0	100%	25%
<b>TOTAL Turua</b>	<b>41,123</b>	<b>9,279</b>	<b>8,900</b>	<b>379</b>	<b>96%</b>	<b>22%</b>
<b>Kerepehi</b>						
Vegetation Control	500	0	0	0		0%
Maintenance/Fencing/Culverts	600	150	41	109	28%	7%
Mechanical Cleaning	400	0	0	0		0%
Maintenance/Fencing/Culverts	400	99	0	99	0%	0%
<b>TOTAL Kerepehi Drain Maintenance</b>	<b>1,900</b>	<b>249</b>	<b>41</b>	<b>208</b>	<b>17%</b>	<b>2%</b>
SW Reticulation	0	0	0	0		
Floodgates	0	0	0	0		
<b>Other</b>						
Weather Events	0	0	0	0		
Routine Inspections	600	150	0	150	0%	0%
Asset Liaison	600	150	77	73	51%	13%
Consent Monitoring	600	0	0	0		0%
Data Collection	0	0	0	0		
Data Maintenance	0	0	0	0		
Design	0	0	0	0		
Drain Inspection	600	150	154	(4)	103%	26%
Rates	3,000	0	0	0		0%
Meeting Expenses	0	0	0	0		
Insurance	1,500	750	747	3	100%	50%
<b>TOTAL</b>	<b>6,900</b>	<b>1,200</b>	<b>978</b>	<b>222</b>	<b>82%</b>	<b>14%</b>
<b>TOTAL OPERATING</b>	<b>8,800</b>	<b>1,449</b>	<b>1,020</b>	<b>429</b>	<b>70%</b>	<b>12%</b>
Overheads	12,924	3,231	3,231	0	100%	25%
Depreciation	24,400	6,099	6,099	0	100%	25%
Interest	(4,346)	(1,086)	(1,086)	0	100%	25%
<b>TOTAL Kerepehi</b>	<b>41,778</b>	<b>9,693</b>	<b>9,263</b>	<b>430</b>	<b>96%</b>	<b>22%</b>
<b>TOTAL EPDD STORMWATER EXPENDITURE</b>	<b>82,901</b>	<b>18,972</b>	<b>18,163</b>	<b>809</b>	<b>96%</b>	<b>22%</b>

### EASTERN PLAINS DRAINAGE DISTRICT WORK AREAS and PUMP LOCATIONS

