

DISTRIBUTION:

Committee Members:

His Worship the Mayor
R P Hunter
K R Caddy
K J Reid
P Schouten
R Webster
A Green
T Nicholson
B Conroy

Council Rep:

J H Thorp

Councillors:

B A Gordon
D H Swales
G R Leonard (observer)

Staff

Ian McLeod
Bruce Stephens
Adrian de Laborde
Council Secretary



A G E N D A
EASTERN PLAINS DRAINAGE
DISTRICT COMMITTEE

DATE: Tuesday 23 February 2016

TIME: 1.30pm

VENUE: Council Office
Williams Street
PAEROA

MEMBERS:

R P Hunter (Chairperson)

K R Caddy
K J Reid
P Schouten
R Webster
A Green
T Nicholson
B Conroy

J P Tregidga (Mayor)



HAURAKI DISTRICT COUNCIL

EASTERN PLAINS DRAINAGE DISTRICT

NOTICE IS HEREBY GIVEN THAT A MEETING OF THE EASTERN PLAINS DRAINAGE DISTRICT COMMITTEE WILL BE HELD IN THE COUNCIL CHAMBERS, WILLIAM STREET, PAEROA ON TUESDAY 23 FEBRUARY 2016 COMMENCING AT 1.30PM

ORDER OF BUSINESS

- | | <u>Pages</u> |
|---|--------------|
| 1. <u>APOLOGIES</u> | |
| 2. <u>DECLARATION OF LATE ITEMS</u> | |
| Pursuant to Section 46A(7) of the Local Government Official Information and Meetings Act 1987, the Chairman is to call for late items to be accepted. | |
| 3. <u>CONFIRMATION OF MINUTES</u> | |
| 3.1 <u>MEETING HELD TUESDAY 24 NOVEMBER 2015 (1459616)</u> | 3 |
| RECOMMENDATION | |
| THAT the minutes of the meeting of the Eastern Plains Drainage District Committee held on Tuesday 24 November 2015 are confirmed and are a true and correct record. | |
| 4. <u>MATTERS ARISING FROM THE MINUTES</u> | |
| 5. <u>DRAINAGE REPORT AND FINANCIAL REPORT TO JANUARY 2016 (1495223)</u> | 6 |
| 5.1 The Drainage Manager's monthly report and financial report on the operations of the Eastern Plains District Drainage Committee to January 2016 is attached. | |
| RECOMMENDATION | |
| THAT the monthly report and financial report on the operations of the Eastern Plains District Drainage Committee to January 2016 be received. | |
| 6. <u>GENERAL BUSINESS</u> | |
| 6.1 <u>MEMBERS' COMMENTS</u> | |
| The members are invited to comment on any general drainage issues of interest in their areas. | |
| 7. <u>LATE ITEMS</u> | |

HAURAKI DISTRICT COUNCIL
EASTERN PLAINS DRAINAGE DISTRICT

MINUTES OF A MEETING OF THE EASTERN PLAINS DRAINAGE DISTRICT COMMITTEE
HELD IN THE COUNCIL CHAMBERS, WILLIAM STREET, PAEROA ON TUESDAY 24
NOVEMBER 2015 COMMENCING AT 2.00PM

PRESENT Messrs R Hunter (Chairperson), K R Caddy, A Green, P Schouten, R Webster and Cr J Thorp

IN ATTENDANCE Cr B A Gordon, Cr Leonard, Messrs Mr I McLeod (Drainage Manager), Mr B Stephens (Drainage Overseer), Sarah Holmes (Strategic Policy Planner), Katherine Quinn (Strategic Planner) and Ms C Black (Council Secretary)

APOLOGIES

RESOLVED

THAT the apology of B Conroy, K Reid and T Nicholson be received and sustained.

EPDD15/14

Green/Schouten

CARRIED

WAIKATO REGIONAL COUNCIL – UPDATE ON SCHEMES WORK PROGRAMMES

Waikato Regional Council Representatives Robert Hicks (Chair of the Waihou Piako Zone Committee), and staff: Kenny Growden, Ian Sara and Jordan Downs were in attendance.

The WRC proposed works programmes for the 2015-16 season as they affected the Eastern Plains Drainage District were presented.

The Committee noted that the indicator lights on some pumps were not operating when the pumps were running.

**2016/17 ANNUAL PLAN – DRAFT LAND DRAINAGE & STORMWATER PROPOSALS
(1454097, 1454924)**

The Drainage Manager reported on the present the draft 2016/17 land drainage and stormwater proposals (including deliverables and expenditure budgets) to the Committee for its consideration. The proposals were attached.

RESOLVED

THAT the report be received, and

THAT the Committee recommends to the Council that the draft 2016/17 proposals including budgeted expenditure be approved for inclusion in a draft annual plan.

EPDD15/15

Thorp/Green

CARRIED

LATE ITEMS

There were no late items.

CONFIRMATION OF MINUTES

MEETING HELD TUESDAY 27 OCTOBER 2015 (1449748)

RESOLVED

THAT the minutes of the meeting of the Eastern Plains Drainage District Committee held on Tuesday 27 October 2015 are confirmed and are a true and correct record.

EPDD15/16

Webster/Caddy

CARRIED

MATTERS ARISING FROM THE MINUTES

There were no matters arising.

DRAINAGE REPORT AND FINANCIAL REPORT FOR THE 4 MONTHS TO 31 OCTOBER 2015 (1455901)

The Drainage Manager’s monthly report and financial report on the operations of the Eastern Plains District Drainage Committee for the 4 months to 31 October 2015 were presented.

RESOLVED

THAT the monthly report for October 2015 be received.

EPDD15/17

Schouten/Green

CARRIED

Turua

The Chairman attended the Turua Hall meeting on 10 November. Staff had prepared estimates for three open drain piping projects for the Committee to consider. The Committee’s preference was for the southern end of Waihou Street, north of Raratuna Street for a distance of 99 m, to be piped at an estimated cost of \$35,000. This construction work was recommended.

RESOLVED

THAT the piping of 99 m of open drain in Waihou Street, Turua, with 300 mm and 450 mm RCRRJ pipe at an estimated cost of \$35,000 be approved.

EPDD15/18

Schouten/Thorp

CARRIED

RESOLVED

THAT the financial report on the operations of the Eastern Plains District Drainage Committee for the 4 months to 31 October 2015 be received.

EPDD15/19

Webster/Green

CARRIED

GENERAL BUSINESS

MEMBERS’ COMMENTS

The members were invited to comment on any general drainage issues of interest in their areas.

Peter Schouten – weed in the Wani Road pump and feeder drain.

Richard Webster – queried the capacity of the Head pump which has been reconditioned recently. He was advised that the pump was acting as a drainage pump, had sufficient capacity and ran about 25% of the time.

Richard Webster – asked if the hi-level drains from the Piako Terrace had sufficient capacity. The Drainage Manager responded that all their stopbanks were the subject of a crest level survey this year, and that there was capital budget to undertake upgrades if necessary. Drain capacity will be checked at the same time.

Roger Hunter – asked whether Council had considered joint chemical tendering with other Councils. He also noted the potential for drain slumping with over-spraying of drain bank vegetation.

Cr Gordon – commented that members could be considering candidates from Hauraki District for representation on the Waikato Regional Council.

Cr Leonard – reported on outcome of K 2 K rail trail meeting held in Waitakaruru on Monday 16 November. There are concerns regarding access and stopbank maintenance programmes. Council is active in addressing the Yellow Bristle Grass issue.

The meeting closed at 3.00pm.

CONFIRMED

R G Hunter
Chairperson

23 February 2016



Report

To: Eastern Plains Drainage District Committee
From: Drainage Manager
Date: 15 February 2016
File reference: Document: 149 5223
Meeting date: 23 February 2016
Subject: EPDD Drainage Manager Report January 2016

Recommendation:

THAT the report be received

1.0 OPERATIONS

1.1 Chemical spraying

2.88 km of drains have been sprayed in Area 2, 24.98 in Area 4, 3.40 in Area 5, and 11.16 in Area 6. The total of 42.42 km is 15% of the total.

The annual public notice advising landowners of the spray and machine clean programme was published in November.

1.2 Machine cleaning

Only 300 m of drain has been machine cleaned in EPDD, plus 300 m in Wharf Road in Kerepehi.

1.3 Maintenance/Fencing/Culverts

No minor maintenance works have been required.

1.4 Pump operation

Regular inspection runs were undertaken in this period. Pump hours for November were 157, December 0, and January 187. The total of 4,635 to the end of January is 75% of the average annual hours.

No man-hours were spent on screen cleaning in the period.

1.5 Floodgates

Floodgate inspections were completed. No floodgates were required to be cleared.

1.6 Stopbanks

Survey of the Terrace stopbanks on the east side of the Piako River, between Kerepehi and Kopuarahi has been requested from Council's Technical Services staff.

These stopbanks on the Miller, Sloane, Johnstone and Price drain run from the higher ground east of the Piako River towards Bush Road, and are designed to convey runoff from the higher terrace to the Piako floodgates without flooding the lower land closer to the river.

Technical Services has advised that due to staff commitments, the work has been contracted to Valley Civil Survey. The report is due by the end of February.

2.0 BY-LAW APPROVALS

Bylaw approvals were granted in the period as follows:

2.1 Culverts: Arlidge, SH 2, Kerepehi

2.2 Building Line Nil.

3.0 SUBDIVISIONS COMMENTED UPON

Subdivisions commented on during the period were as follows:

Nil

4.0 RAINFALL

The table and graphs of the Ngatea Monthly Rainfall depths since 1993 is attached. The rainfall total for November was 125 mm, December 19 mm (lowest in HDC's record), and January 103 mm. The total for the year to date is 700 mm, which is 109% of the annual average.

5.0 CAPITAL WORKS

5.1 Kerepehi

The piping of Kerepehi Town Road has been completed and the grass has taken well. The property owner has erected a security fence from the SH end to the western end of the property. The end result is a tidier approach to the village.

The piping of the drain at the Kerepehi marae was also completed before the Christmas break.

5.2 Turua

The approved piping of 99 m of open drain in Waihou Street will be constructed later in the season.

6.0 GENERAL

6.1 Waikato Regional Council Waihou Piako Zone Committee Meeting

The WRC Zone committee meeting is scheduled to be held on 18 February. Agenda items of interest to the EPDD are:

Key Scheme Projects, including:

- Structural audits of floodgates and pump stations
- Piako stopbank stability works
- The K2K cycleway project and the MoU between WRC & HDC
- Waihou and Piako Scheme spoil requirements for stopbank reconstruction
- As well as the traditional river and flood protection activities

6.2 Combined Drainage Committees Christmas Dinner

The combined Drainage Committees' Christmas dinner was held at the Kerepehi Bowling Club on Tuesday 16 December from 6pm. Attendance was only half of the members due to other commitments. It has been suggested that an earlier date may enable more members to attend.

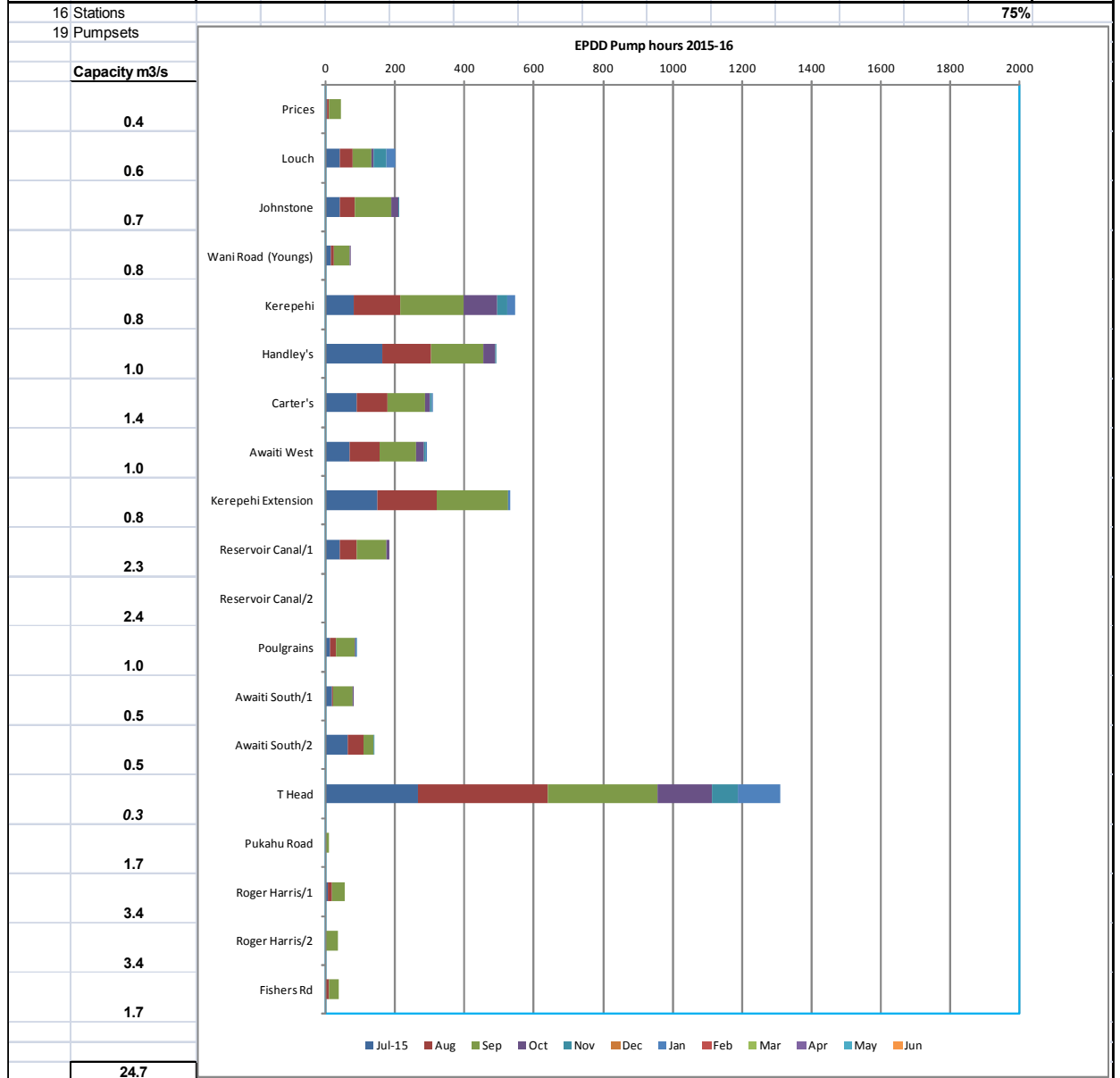
Ian McLeod
Drainage Manager

STAFF CONTACT DETAILS

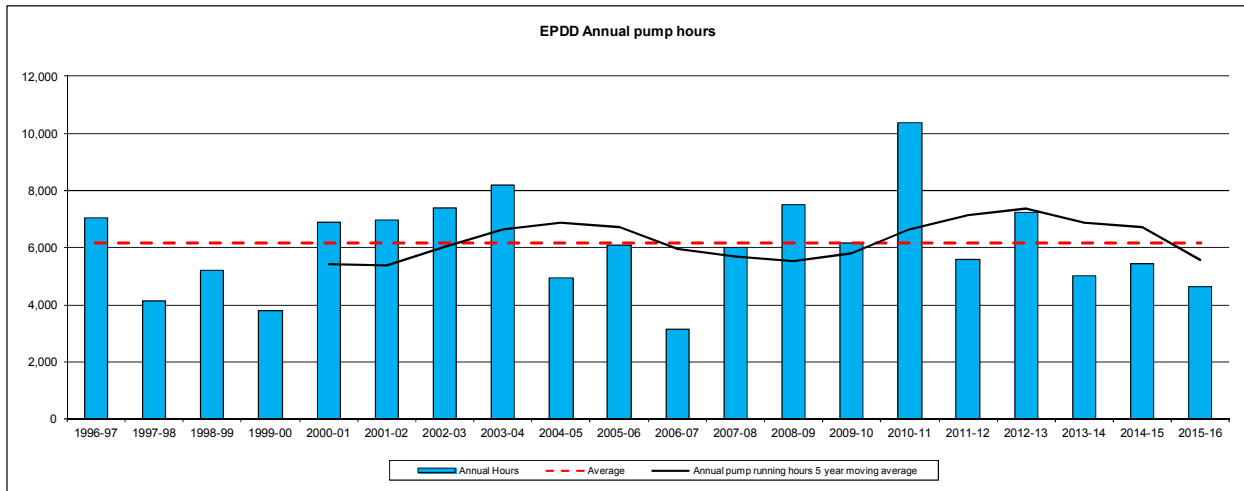
Drainage Manager	Ian (Mac) McLeod	07 862 5073 email:	027 496 9558 mac@hauraki-dc.govt.nz
Drainage Overseer	Bruce (Goldy) Stephens	027 281 6924 email:	goldy@hauraki-dc.govt.nz

EASTERN PLAINS DRAINAGE DISTRICT – PUMP RUNNING HOURS 2015-16

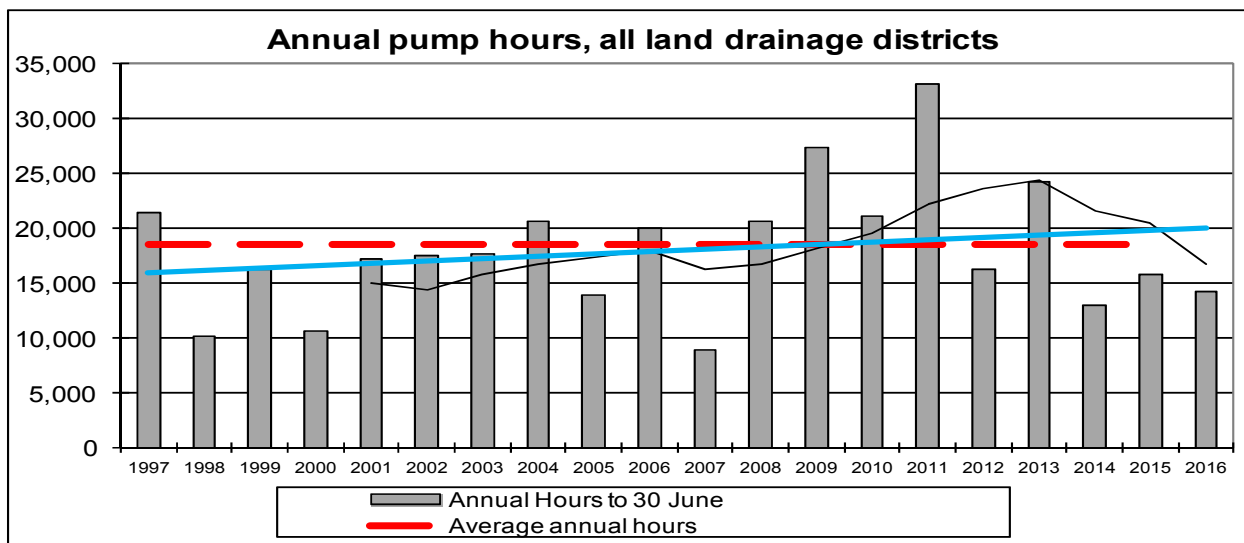
Eastern Plains DD	Jul-15	Aug	Sep	Oct	Nov	Dec	Jan	Feb	Mar	Apr	May	Jun	Total	Average
No 1 Prices	4	5	34	0	0	0	0						43	36
No 2 Louch	40	38	55	4	39	0	23						199	60
No 3 Johnstone	40	42	106	21	1	0	0						210	251
No 4 Wani Road (Young)	14	9	46	1	0	0	0						70	249
No 10 Kerepehi	80	136	180	98	28	0	24						546	192
No 13 Handley's	163	140	152	34	1	0	0						490	377
No 14 Carter's	88	89	108	15	5	0	5						310	521
No 15 Awaiti West	68	87	105	23	7	0	3						293	639
No 16 Kerepehi Extension	150	170	206	0	0	0	5						531	609
No 19 Reservoir Canal/1	40	50	86	8	0	0	0						184	325
Reservoir Canal/2	0	0	0	0	0	0	0						0	10
No 20 Poulgrains	13	16	53	4	1	0	3						90	91
No 28 Awaiti South/1	19	2	57	2	0	0	0						80	172
Awaiti South/2	62	46	29	0	2	0	0						139	167
No 32 T Head	266	375	315	159	73	0	124						1312	2283
No 53 Pukahu Road	0	0	8	0	0	0	0						8	22
No 55 Roger Harris/1	5	14	36	0	0	0	0						55	47
Roger Harris/2	0	0	36	0	0	0	0						36	83
No 61 Fishers Rd	0	9	30	0	0	0	0						39	32
	1052	1228	1642	369	157	0	187	0	0	0	0	0	4635	6165



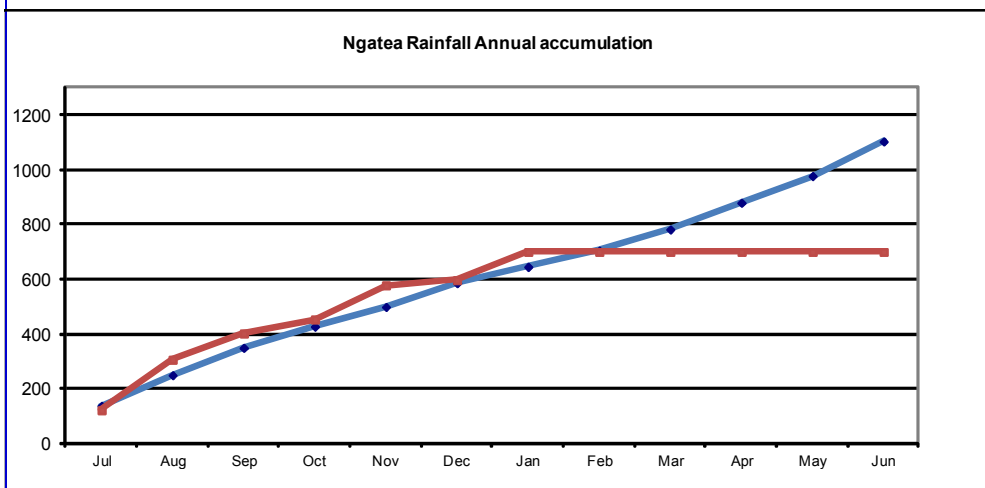
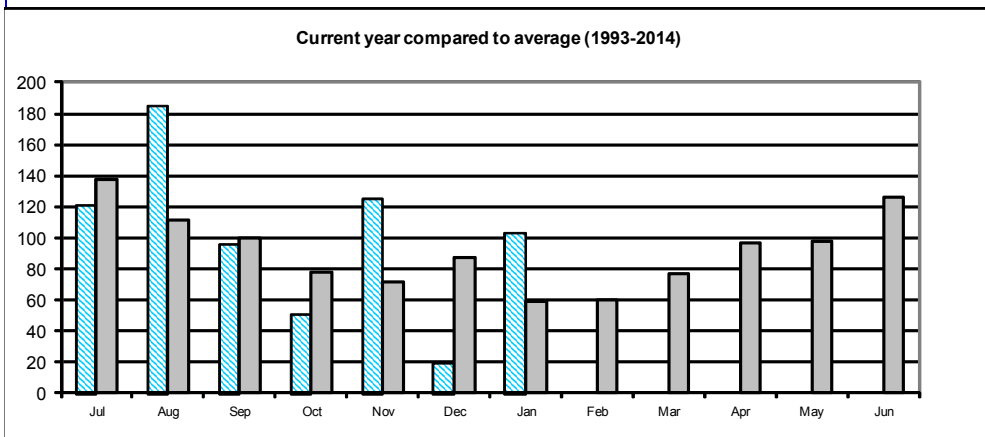
EASTERN PLAINS DRAINAGE DISTRICT, ANNUAL PUMP RUNNING HOURS



ANNUAL PUMP RUNNING HOURS, ALL DISTRICTS



Ngatea Monthly Rainfall													
Haywards Road (to 1999). HDC Depot (2000 on)													
Year	Jan	Feb	Mar	Apr	May	Jun	Jul	Aug	Sep	Oct	Nov	Dec	Totals
1993	36.0	28.5	95.0	50.0	123.0	181.5	8.0	111.0	58.0	37.0	100.0	28.5	857
1994	81.0	47.5	51.5	64.0	78.0	116.0	155.0	100.5	153.0	112.5	30.0	26.5	1016
1995	37.0	71.0	196.5	245.5	88.5	181.0	203.5	74.0	73.0	94.0	136.5	128.5	1529
1996	29.5	89.5	88.5	227.5	82.0	166.5	137.5	147.0	149.0	34.0	72.5	222.0	1446
1997	4.5	51.0	195.0	58.0	97.5	138.5	64.5	65.5	221.5	61.0	39.0	49.0	1045
1998	12.0	97.0	67.0	48.0	56.5	97.0	299.0	104.0	48.0	100.0	85.0	89.0	1103
1999	81.0	28.0	81.0	91.0	45.0	94.5	142.0	132.0	88.0	53.0	206.5	109.5	1152
2000	60.0	11.5	52.5	171.0	85.0	75.5	154.5	114.0	97.5	48.0	96.5	79.0	1045
2001	16.5	156.5	49.0	169.0	165.5	50.0	74.5	121.0	47.5	134.0	114.0	177.0	1275
2002	117.0	39.5	50.5	62.0	61.0	168.5	135.0	79.0	75.5	73.0	34.5	54.0	950
2003	110.0	105.0	102.0	134.0	73.0	124.5	101.5	58.5	155.0	107.0	36.5	111.5	1219
2004	98.5	230.0	11.5	21.0	175.5	106.5	120.5	112.0	119.0	80.0	56.0	130.5	1261
2005	30.5	32.0	32.5	7.0	147.5	118.0	152.5	59.0	87.0	145.5	65.5	107.0	984
2006	37.0	47.5	34.5	120.0	82.0	86.0	76.0	108.0	57.0	90.5	64.0	36.0	839
2007	56.0	27.0	146.0	45.0	41.0	92.0	281.0	95.0	68.5	76.0	40.0	53.0	1021
2008	2.0	35.0	40.5	146.5	71.0	152.5	253.0	166.0	52.0	94.0	47.0	61.0	1121
2009	59.0	120.0	30.0	72.0	91.0	150.0	124.0	91.0	85.0	119.0	35.0	81.0	1057
2010	63.0	4.0	13.0	44.0	139.0	230.5	90.0	229.0	146.0	18.0	28.0	62.0	1067
2011	270.0	9.0	172.0	85.0	101.0	110.0	127.0	57.0	74.0	76.0	15.0	157.0	1253
2012	63.0	82.0	130.0	39.0	111.0	52.0	179.0	130.0	85.0	69.0	71.0	64.0	1075
2013	2.0	17.0	23.0	128.0	162.0	117.0	48.0	122.0	133.0	41.0	104.0	96.0	993
2014	41.0	8.0	35.0	98.0	42.0	237.0	109.0	110.0	137.0	73.0	50.0	72.0	1012
2015	10.0	44.0	79.0	114.0	136.0	59.0	121.0	185.0	96.0	51.0	125.0	19.0	1039
2016	103.0												103
Ave.	59	60	77	97	98	126	137	112	100	78	72	88	1104
Max	270	230	197	246	176	237	299	229	222	146	207	222	1529
Min.	2	4	12	7	41	50	8	57	48	18	15	27	839



Eastern Plains Drainage District						
Financial Report for 7 months to 31 January 2016						
Item	Total Budget	Budget YTD	Actual YTD	Variance	Actual % of YTD Budget	Actual % of Total Budget
DRAINAGE OPERATIONS						
Vegetation Control						
Area 1	13,800	2,387	87	2,300	4%	1%
Area 2	11,200	1,867	0	1,867	0%	0%
Area 3	17,300	2,884	0	2,884	0%	0%
Area 4	16,400	2,781	(1,070)	3,851	-38%	-7%
Area 5	10,800	2,111	331	1,780	16%	3%
TOTAL	69,500	12,030	(652)	12,682	-5%	-1%
Mechanical Cleaning						
Area 1	10,000	2,000	0	2,000	0%	0%
Area 2	11,600	2,320	0	2,320	0%	0%
Area 3	4,000	800	0	800	0%	0%
Area 4	35,400	7,684	604	7,080	8%	2%
Area 5	11,200	2,240	0	2,240	0%	0%
TOTAL	72,200	15,044	604	14,440	4%	1%
Maintenance/Fencing/Culverts						
Area 1	680	399	0	399	0%	0%
Area 2	680	399	434	(35)	109%	64%
Area 3	680	399	0	399	0%	0%
Area 4	680	399	0	399	0%	0%
Area 5	3,680	2,149	450	1,699	21%	12%
TOTAL	6,400	3,745	884	2,861	24%	14%
TOTAL DRAIN MAINTENANCE	148,100	30,819	835	29,984	3%	1%
Pumps						
General	10,240	5,971	8,437	(2,466)	141%	82%
EPDD Pumps	54,100	36,472	15,541	20,931	43%	29%
TOTAL	64,340	42,443	23,978	18,465	56%	37%
Floodgates						
Floodgates	4,758	2,772	2,208	564	80%	46%
TOTAL	4,758	2,772	2,208	564	80%	46%
Stopbanks						
Tributary Banks	0	0	0	0		
TOTAL	0	0	0	0		
Other						
Weather Events	2,100	1,225	0	1,225	0%	0%
Asset Liaison	3,500	2,044	1,008	1,036	49%	29%
Consent Monitoring	0	0	0	0		
Data Collection	0	0	17	(17)		
Data Maintenance	3,054	1,778	0	1,778	0%	0%
Drain Inspection	4,500	2,625	1,463	1,162	56%	33%
Rates	0	0	0	0		
Meeting Expenses	2,700	1,350	886	465	66%	33%
Insurance	500	500	1,494	(994)	299%	299%
TOTAL	16,354	9,522	4,868	4,654	51%	30%
TOTAL OPERATING	233,552	85,556	31,889	53,667	37%	14%
Overheads						
Overheads	56,273	32,823	32,826	(3)	100%	58%
TOTAL	56,273	32,823	32,826	(3)	100%	58%
Depreciation						
Depreciation	25,900	15,106	15,106	0	100%	58%
TOTAL	25,900	15,106	15,106	0	100%	58%
Interest						
Interest	(7,850)	(4,578)	(4,578)	0	100%	58%
TOTAL	(7,850)	(4,578)	(4,578)	0	100%	58%
TOTAL EXPENDITURE	307,875	128,907	75,243	53,664	58%	24%

EASTERN URBAN STORMWATER						
Item	Total Budget	Budget YTD	Actual YTD	Variance	Actual % of YTD Budget	Actual % of Total Budget
Turua						
Vegetation Control	800	532	192	340	36%	24%
Maintenance/Fencing/Culverts	1,000	703	232	471	33%	23%
Mechanical Cleaning	400	0	0	0		0%
Maintenance/Fencing/Culverts	400	231	0	231	0%	0%
TOTAL Turua Drain Maintenance	2,600	1,466	424	1,042	29%	16%
SW Reticulation	600	350	309	41	88%	51%
Floodgates	0	0	0	0		
Other						
Weather Events	0	0	0	0		
Routine Inspections	0	0	0	0		
Asset Liaison	400	231	385	(154)	167%	96%
Consent Monitoring	800	0	169	(169)		21%
Data Collection	0	0	5	(5)		
Data Maintenance	0	0	0	0		
Design	0	0	0	0		
Drain Inspection	800	469	616	(147)	131%	77%
Rates	3,000	0	0	0		0%
Meeting Expenses	0	0	0	0		
Insurance	1,000	1,000	531	469	53%	53%
TOTAL	6,000	1,700	1,706	(6)	100%	28%
TOTAL OPERATING	9,200	3,516	2,439	1,077	69%	27%
Overheads	11,755	6,860	6,857	3	100%	58%
Depreciation	17,200	10,031	10,031	0	100%	58%
Interest	2,968	1,729	1,729	0	100%	58%
TOTAL Turua	41,123	22,136	21,056	1,080	95%	51%

Item	Total Budget	Budget YTD	Actual YTD	Variance	Actual % of YTD Budget	Actual % of Total Budget
Kerepehi						
Vegetation Control	500	332	165	167	50%	33%
Maintenance/Fencing/Culverts	600	350	309	41	88%	51%
Mechanical Cleaning	400	0	0	0		0%
Maintenance/Fencing/Culverts	400	231	0	231	0%	0%
TOTAL Kerepehi Drain Maintenance	1,900	913	474	439	52%	25%
SW Reticulation	0	0	0	0		
Floodgates	0	0	0	0		
Other						
Weather Events	0	0	0	0		
Routine Inspections	600	350	0	350	0%	0%
Asset Liaison	600	350	462	(112)	132%	77%
Consent Monitoring	600	0	169	(169)		28%
Data Collection	0	0	5	(5)		
Data Maintenance	0	0	0	0		
Design	0	0	0	0		
Drain Inspection	600	350	539	(189)	154%	90%
Rates	3,000	0	0	0		0%
Meeting Expenses	0	0	0	0		
Insurance	1,500	1,500	747	753	50%	50%
TOTAL	6,900	2,550	1,923	627	75%	28%
TOTAL OPERATING	8,800	3,463	2,397	1,066	69%	27%
Overheads	12,924	7,539	7,539	0	100%	58%
Depreciation	24,400	14,231	14,231	0	100%	58%
Interest	(4,346)	(2,534)	(2,534)	0	100%	58%
TOTAL Kerepehi	41,778	22,699	21,632	1,067	95%	52%

Opening Reserve Balance as at 1 July 2015	+ Drainage Rates (incl Council 15%)	operating Exp (incl DiSP)	Depreciation	+/- Interest	- Capital	= Closing Bal	
Eastern Plains	211,692	312,940	315,725	25,900	7,850	74,000	168,657
Kerepehi Stormwater	59,994	38,820	46,124	24,400	4,346	17,000	64,436
Turua Stormwater	(110,040)	41,180	38,155	17,200	(2,968)	20,000	(112,783)

EASTERN PLAINS DRAINAGE DISTRICT WORK AREAS and PUMP LOCATIONS

