

DISTRIBUTION:

Committee Members:

His Worship the Mayor
R P Hunter
K R Caddy
K J Reid
P Schouten
R Webster
A Green
T Nicholson
B Conroy

Council Rep:

P Buckthought

Councillors:

J H Thorp
D H Swales

Staff

S De Laborde
B Stephens
A de Laborde
Council Secretary



A G E N D A
EASTERN PLAINS DRAINAGE
DISTRICT COMMITTEE

DATE: Thursday, 22 February 2018

TIME: 1.30pm

VENUE: Council Office
William Street
PAEROA

MEMBERS:

R P Hunter (Chairperson)

K R Caddy
K J Reid
P Schouten
R Webster
A Green
T Nicholson
B Conroy
P Buckthought
J P Tregidga (Mayor)

Delegations: Eastern Plains Drainage Committee (EPDD)

Membership	<p>Advisory Committee consisting of one Councillor (with an alternate) and representation as scheduled from each of the following Drainage Areas with the Drainage District:</p> <ul style="list-style-type: none">■ A representative (or alternative) of Kopuarahi/Orongo■ A representative (or alternative) of Horahia■ Two representatives (or alternative) of Wharepoa■ Two representatives (or alternatives) of Awaiti■ Two representatives (or alternatives) of Netherton
Meeting frequency	<p>The last Thursday in each month bi-monthly commencing at 1.30pm</p>

The Council delegates to the Drainage Committee the following powers, duties and responsibilities:

- To make recommendations to the Council on all matters relating to Land Drainage within their District.
- The Eastern Plains Drainage Committees can also make recommendations to Council on urban stormwater matters within their district.
- To make recommendations on Council's operational and capital estimates for Council's Draft Long Term Plan and Draft Annual Plans.
- To provide input to Land Drainage asset planning matters and Land Drainage rating reviews in their respective areas.
- To generally oversee and monitor the Council's annual work programmes within the nominated areas; and to assist as necessary or as appropriate in the implementation of approved programmes.
- To facilitate the flow of information between ratepayers and staff.



EASTERN PLAINS DRAINAGE DISTRICT COMMITTEE AGENDA

Thursday, 22 February 2018 – 1.30pm Council Office, William Street, Paeroa

<u>Order of Business</u>	Pages
1. Apologies	
2. Declarations of late items.	
3. Confirmation of Minutes – 26-10-17 (2344306)	
4. Drainage Managers Report for January 2018 and Financial Report for the period 7 months 31 January 2018 (2346698)	4
5. <u>General Business</u>	
5.1 South Catchments and Awaiti Canal - Lack of Tidal Movement	7
5.2 Members feedback on drainage matters in their areas.	

HAURAKI DISTRICT COUNCIL

EASTERN PLAINS DRAINAGE DISTRICT

MINUTES OF A MEETING OF THE EASTERN PLAINS DRAINAGE DISTRICT COMMITTEE HELD IN THE COUNCIL CHAMBERS, WILLIAM STREET, PAEROA ON THURSDAY, 30 NOVEMBER 2017 COMMENCING AT 1.30PM

PRESENT

Messrs R Hunter (Chairperson), K J Reid, K R Caddy, T Nicholson, A Green, P Schouten, R Webster and Cr P Buckthought

IN ATTENDANCE

Cr J H Thorp (alternate), S de Laborde (Infrastructure Systems and Planning Manager), Mr B Stephens (Drainage Overseer) and Ms C Black (Council Secretary)

APOLOGIES

RESOLVED

THAT the apologies of G Laurich and B Conroy be received and sustained.

EPDD17/21

Reid/Schouten

CARRIED

LATE ITEMS

There were no late items.

CONFIRMATION OF MINUTES

MEETING HELD ON (26-10-17) (2305078)

RESOLVED

THAT the minutes of the meeting of the Western Plains Drainage District Committee held on Thursday 26 October 2017 be taken as read and confirmed.

EPDD17/22

Hunter/Caddy

CARRIED

MATTERS ARISING FROM THE MINUTES

There were no matters arising.

DRAINAGE ACTIVITY REPORT – OCTOBER 2017 AND FINANCIAL REPORT FOR THE PERIOD FOR THE 4 MONTHS TO 31 OCTOBER 2017 (2306708)

The Infrastructure Systems and Planning Manager and Drainage Overseer presented the Drainage Report for October 2017 and Financial Report for the 4 months to 31 October 2017.

RESOLVED

THAT the report be received.

EPDD17/23

Buckthought/Webster

CARRIED

OPERATIONS

Machine cleaning

5.2 km of drains have been machine cleaned in the year to date.

Maintenance/Fencing/Culverts

Replaced pipes at Buchanan's culvert in H drain. Cleared culverts in Boundary drain twice and Te Kauri No 1 drain.

Pump operation

Regular inspection runs were undertaken in this period. Pump hours for October were 924. The summary for the year to date was attached.

Floodgates

Routine inspections completed, no faults noted.

BY-LAW APPROVALS

Bylaw approvals were granted in the period as follows:

Culverts: Nil

Building Line Nil

SUBDIVISIONS COMMENTED UPON

There were no subdivisions commented on during the period.

RAINFALL

The Drainage Overseer spoke to the table and graphs shown in the report of the Ngatea Monthly Rainfall depths since 1993. The rainfall total for October was 117 mm. The year to date total from July 1 is 473mm.

CAPITAL WORKS

Stop Bank Survey

Work on the Terraces stop banks will commence soon. The banks will be surveyed first with the drone to calculate the volume of material required. Farmers will be notified prior to commencement.

GENERAL

Waikato Regional Council - Programmed Projects 2018

Representatives from Waikato Regional Council - Kenny Growden and Ian Sara were in attendance and updated on activities and gave a preview of the coming season's major projects.

MEMBERS' COMMENTS

There were no significant issues raised by the members as regards to their drainage areas.

The meeting closed at 3.00pm.

CONFIRMED

R Hunter
Chairperson

22 February 2018



Report

To: Eastern Plains Drainage District Committee
From: Infrastructure Systems and Planning Manager
Date: Friday, 16 February 2018
File reference: Document: 2346698
Meeting date: Thursday, 22 February 2018
Subject: **EPDD Drainage Activity Report January 2018**

Recommendation:

THAT the report be received.

This report covers the period to the end of January 2018.

1.0 OPERATIONS

1.1 Chemical spraying

48km of drains have been sprayed to in January.

1.2 Machine cleaning

5.5 km of drains have been machine cleaned in the year to date.

1.3 Maintenance/Fencing/Culverts

Routine maintenance items have been undertaken.

1.4 Pump operation

Regular inspection runs were undertaken in this period. Pump hours for September were 244 hours.

0 man-hours were spent on screen cleaning in the period.

1.5 Floodgates

Floodgate inspections were completed. Cleared Mill Creek and Fishers Road.

2.0 BY-LAW APPROVALS

Bylaw approvals were granted in the period as follows:

2.1 Culverts: Nil

2.2 Building Line Nil

3.0 **SUBDIVISIONS COMMENTED UPON**

Subdivisions commented on during the period were as follows:

Nil

4.0 **RAINFALL**

The table and graphs of the Ngatea Monthly Rainfall depths since 1993 is attached. The rainfall total for January was 100 mm.

The year to date total from July 1 is 632mm.

5.0 **CAPITAL WORKS**

5.1 Stop bank survey

The Prices stopbank has been surveyed. The others will be done over the next few months. The results are quite favourable, see annexure.

5.2 Green's Drain

Approval/direction has been given from WRC to Hauraki DC to widen the Green's Drain as proposed. WRC believe that the current system can cope with this change in the drainage network which will connect to the Factory/O'Carroll's system. The drain will be designed to a 1.2 cumec max flow capacity.

As a result of this the Campbell drain will be permanently blocked to force the water along the Green's drain.

The design still needs to be worked through to calculate the extra width required.

6.0 **GENERAL**

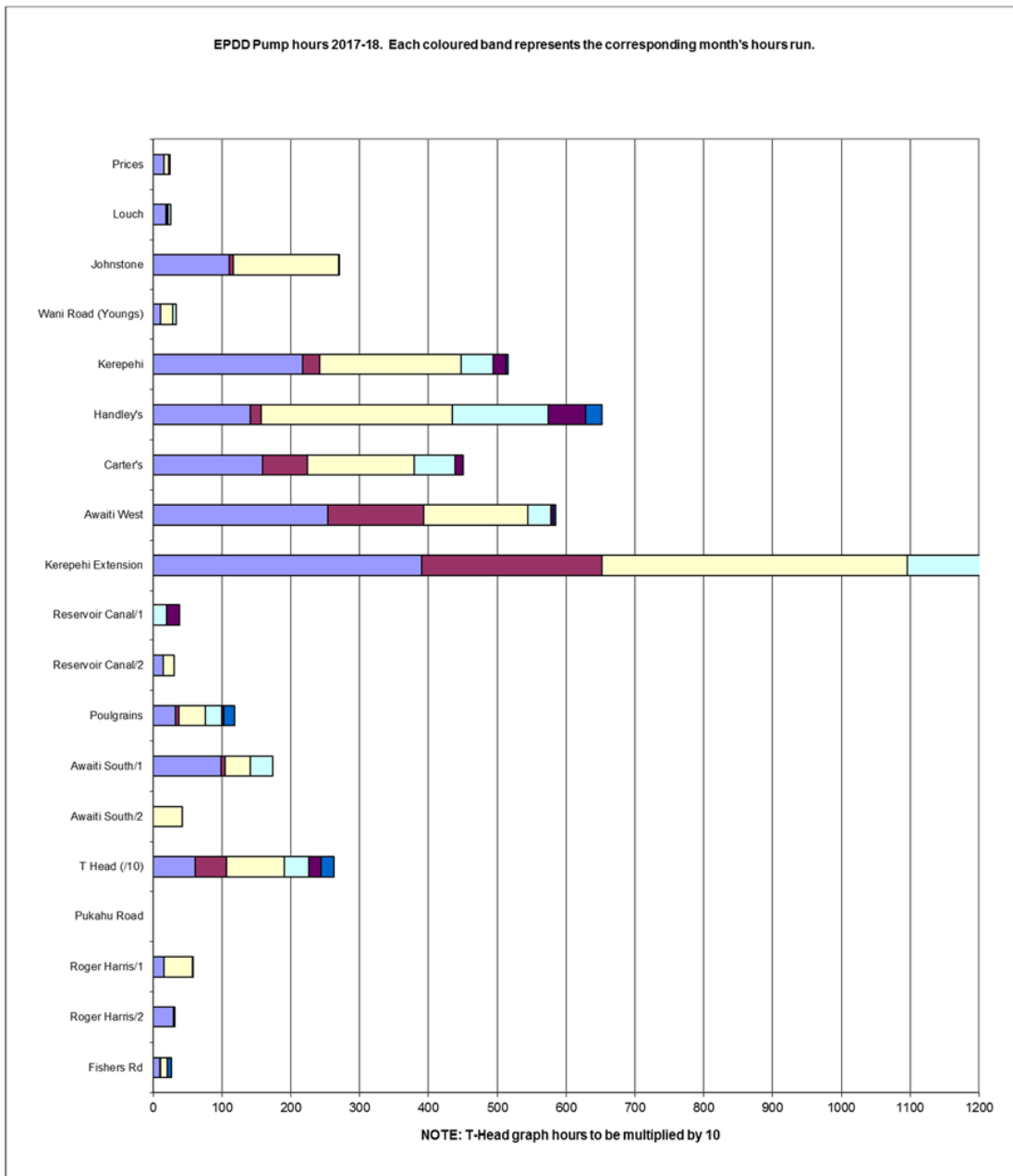
6.1 Drainage Bylaw Review

Committee members are requested to consider the current bylaw and to provide input into the review. A copy of the Drainage Bylaw will be available at the meeting for this purpose.

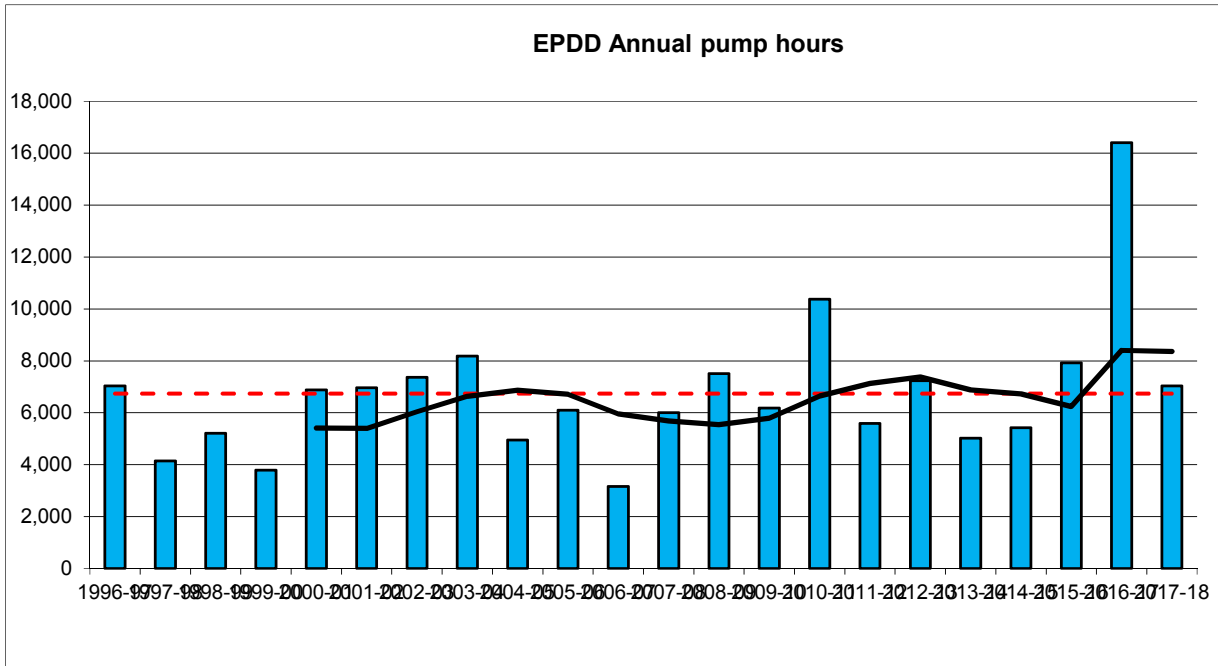
Steve de Laborde
Infrastructure Systems and Planning Manager

EASTERN PLAINS DRAINAGE DISTRICT – PUMP RUNNING HOURS 2017-18

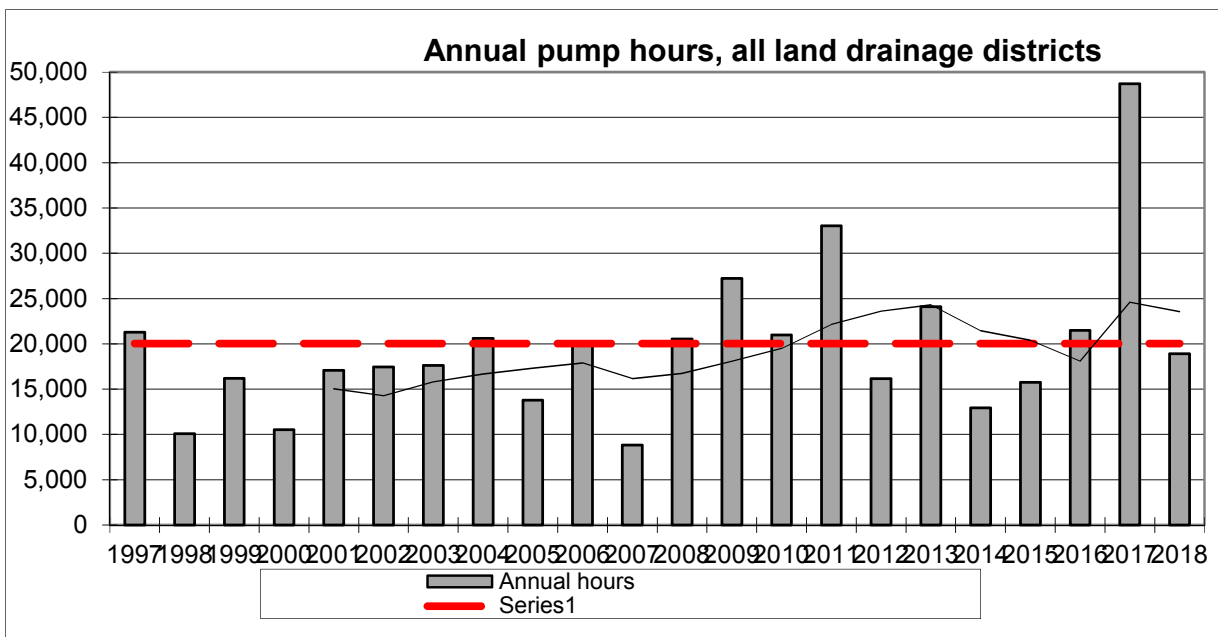
Eastern Plains DD		Jul-17	Aug	Sep	Oct	Nov	Dec	Jan	Feb	Mar	Apr	May	Jun	Total	Average
No 1	Prices	16	0	7	1	0	0	0						24	46
No 2	Louch	19	1	2	3	0	0	0						25	86
No 3	Johnstone	110	6	154	0	1	0	0						271	299
No 4	Wani Road (Young)	11	0	17	5	0	0	0						33	261
No 10	Kerepehi	217	25	205	47	19	0	3						516	271
No 13	Handley's	141	16	278	139	54	0	24						652	454
No 14	Carter's	159	65	155	60	11	0	0						450	557
No 15	Awaiti West	254	139	151	34	4	0	3						585	639
No 16	Kerepehi Extension	390	262	444	198	35	0	6						1335	681
No 19	Reservoir Canal/1	0	0	0	20	18	0							38	340
	Reservoir Canal/2	15	0	15	0	0	0							30	14
No 20	Poulgrains	32	5	39	24	3	0	15						118	128
No 28	Awaiti South/1	99	6	36	33	0	0	0						174	189
	Awaiti South/2	0	0	42	0	0	0	0						42	181
No 32	T Head	611	457	835	357	181	0	188						2629	2368
No 53	Pukahau Road	0	0	0	0	0	0	0						0	28
No 55	Roger Harris/1	16	0	41	1	0	0	0						58	66
	Roger Harris/2	29	0	0	2	0	0	0						31	92
No 61	Fishers Rd	10	1	10	0	0	0	5						26	37
		2129	983	2431	924	326	0	244	0	0	0	0	0	7037	6736



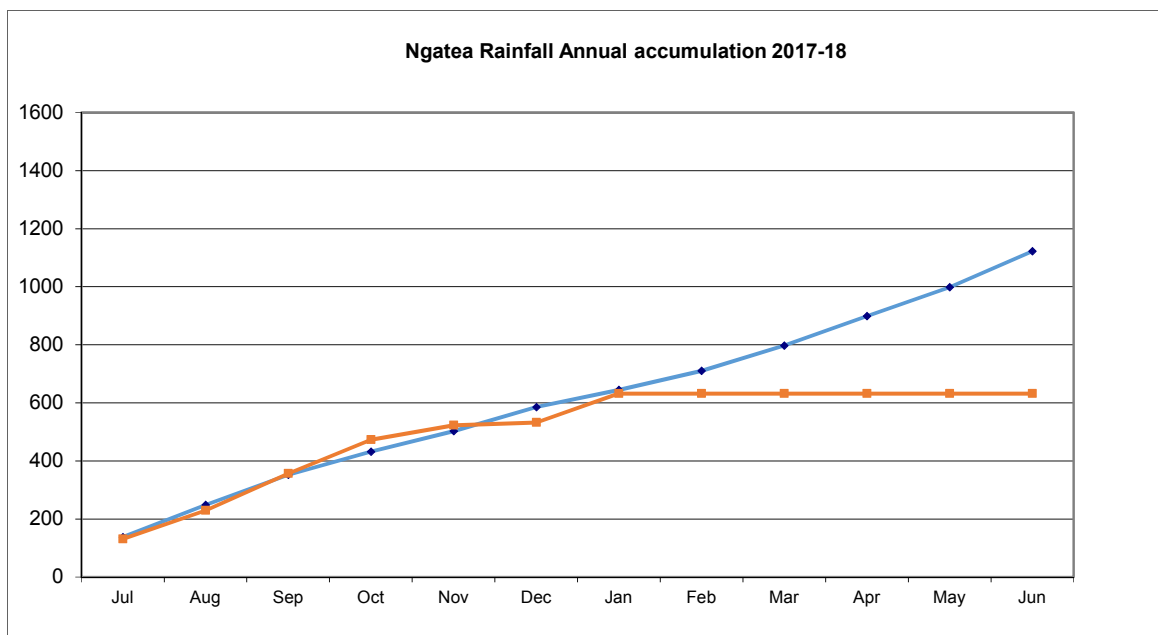
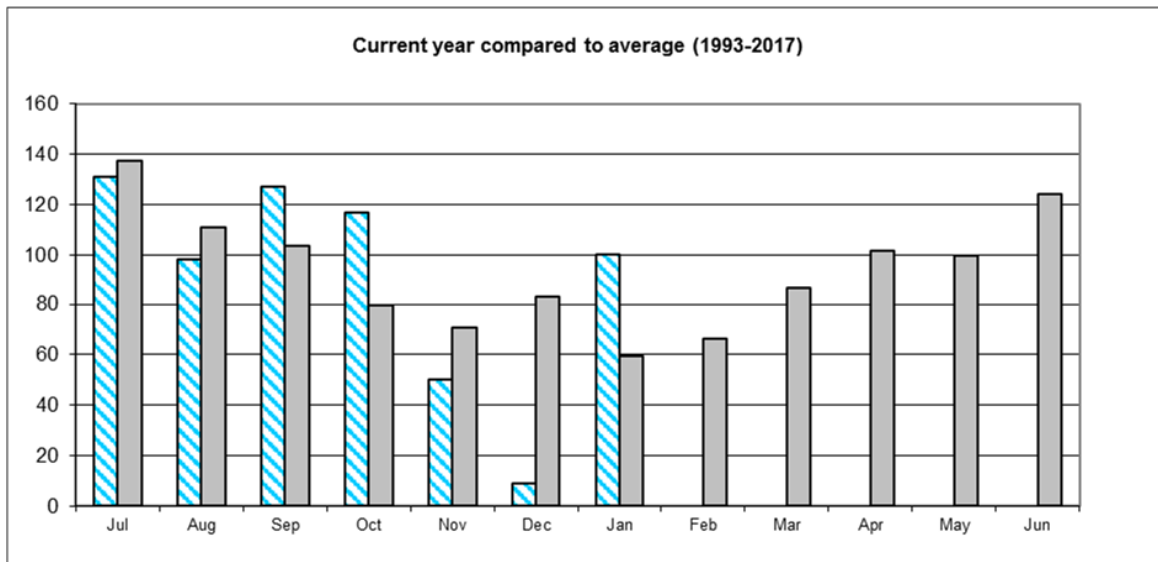
EASTERN PLAINS DRAINAGE DISTRICT, ANNUAL PUMP RUNNING HOURS



ANNUAL PUMP RUNNING HOURS, ALL DISTRICTS



Ngatea Monthly Rainfall													
Haywards Road (to 1999). HDC Depot (2000 on)													
Year	Jan	Feb	Mar	Apr	May	Jun	Jul	Aug	Sep	Oct	Nov	Dec	Totals
1993	36.0	28.5	95.0	50.0	123.0	181.5	8.0	111.0	58.0	37.0	100.0	28.5	857
1994	81.0	47.5	51.5	64.0	78.0	116.0	155.0	100.5	153.0	112.5	30.0	26.5	1016
1995	37.0	71.0	196.5	245.5	88.5	181.0	203.5	74.0	73.0	94.0	136.5	128.5	1529
1996	29.5	89.5	88.5	227.5	82.0	166.5	137.5	147.0	149.0	34.0	72.5	222.0	1446
1997	4.5	51.0	195.0	58.0	97.5	138.5	64.5	65.5	221.5	61.0	39.0	49.0	1045
1998	12.0	97.0	67.0	48.0	56.5	97.0	299.0	104.0	48.0	100.0	85.0	89.0	1103
1999	81.0	28.0	81.0	91.0	45.0	94.5	142.0	132.0	88.0	53.0	206.5	109.5	1152
2000	60.0	11.5	52.5	171.0	85.0	75.5	154.5	114.0	97.5	48.0	96.5	79.0	1045
2001	16.5	156.5	49.0	169.0	165.5	50.0	74.5	121.0	47.5	134.0	114.0	177.0	1275
2002	117.0	39.5	50.5	62.0	61.0	168.5	135.0	79.0	75.5	73.0	34.5	54.0	950
2003	110.0	105.0	102.0	134.0	73.0	124.5	101.5	58.5	155.0	107.0	36.5	111.5	1219
2004	98.5	230.0	11.5	21.0	175.5	106.5	120.5	112.0	119.0	80.0	56.0	130.5	1261
2005	30.5	32.0	32.5	7.0	147.5	118.0	152.5	59.0	87.0	145.5	65.5	107.0	984
2006	37.0	47.5	34.5	120.0	82.0	86.0	76.0	108.0	57.0	90.5	64.0	36.0	839
2007	56.0	27.0	146.0	45.0	41.0	92.0	281.0	95.0	68.5	76.0	40.0	53.0	1021
2008	2.0	35.0	40.5	146.5	71.0	152.5	253.0	166.0	52.0	94.0	47.0	61.0	1121
2009	59.0	120.0	30.0	72.0	91.0	150.0	124.0	91.0	85.0	119.0	35.0	81.0	1057
2010	63.0	4.0	13.0	44.0	139.0	230.5	90.0	229.0	146.0	18.0	28.0	62.0	1067
2011	270.0	9.0	172.0	85.0	101.0	110.0	127.0	57.0	74.0	76.0	15.0	157.0	1253
2012	63.0	82.0	130.0	39.0	111.0	52.0	179.0	130.0	85.0	69.0	71.0	64.0	1075
2013	2.0	17.0	23.0	128.0	162.0	117.0	48.0	122.0	133.0	41.0	104.0	96.0	993
2014	41.0	8.0	35.0	98.0	42.0	237.0	109.0	110.0	137.0	73.0	50.0	72.0	1012
2015	10.0	44.0	79.0	114.0	136.0	59.0	121.0	185.0	96.0	51.0	125.0	19.0	1039
2016	103.0	167.0	39.0	51.0	96.0	137.0	152.0	100.0	162.0	82.0	66.0	50.0	1205
2017	24.0	107.0	341.0	255.0	142.0	63.0	131.0	98.0	127.0	117.0	50.0	9.0	1464
2018	100.0												100
Ave.	59	66	86	102	100	124	138	111	104	79	71	83	1123
Max	270	230	341	255	176	237	299	229	222	146	207	222	1529
Min.	2	4	12	7	41	50	8	57	48	18	15	9	839



Eastern Plains Drainage District						
Financial Report for 7 months to 31 January 2018						
Item	Total Budget	Budget YTD	Actual YTD	Variance	Actual % of YTD Budget	Actual % of Total Budget
DRAINAGE OPERATIONS						
Vegetation Control						
Area 1	13,800	7,176	0	7,176	0%	0%
Area 2	11,200	8,050	34	8,016	0%	0%
Area 3	17,300	6,533	5,034	1,500	77%	29%
Area 4	16,400	10,092	0	10,092	0%	0%
Area 5	10,799	9,567	0	9,567	0%	0%
TOTAL	69,499	41,417	5,068	36,350	12%	7%
Mechanical Cleaning						
Area 1	10,000	7,467	0	7,467	0%	0%
Area 2	11,600	5,833	5,000	833	86%	43%
Area 3	4,000	6,767	300	6,467	4%	8%
Area 4	35,399	2,333	1	2,333	0%	0%
Area 5	11,200	20,649	4,513	16,137	22%	40%
TOTAL	72,199	43,049	9,814	33,236	23%	14%
Maintenance/Fencing/Culverts						
Area 1	680	502	1,124	(622)	224%	165%
Area 2	680	397	100	297	25%	15%
Area 3	680	397	50	347	13%	7%
Area 4	680	397	0	397	0%	0%
Area 5	680	397	780	(383)	197%	115%
TOTAL	3,400	2,088	2,053	35	98%	60%
TOTAL DRAIN MAINTENANCE	145,098	86,555	16,934	69,621	20%	12%
Pumps						
General	10,313	57,342	8,332	49,010	15%	81%
EPDD Pumps	54,100	6,016	353	5,663	6%	1%
TOTAL	64,413	63,358	8,685	54,673	14%	13%
Floodgates						
Floodgates	4,758	3,126	712	2,414	23%	15%
TOTAL	4,758	3,126	712	2,414	23%	15%
Stopbanks						
Tributary Banks	0	0	0	0		
TOTAL	0	0	0	0		
Item	Total Budget	Budget YTD	Actual YTD	Variance	Actual % of YTD Budget	Actual % of Total Budget

Other						
Weather Events	2,100	292	0	292	0%	0%
Asset Liaison	3,498	292	1,298	(1,006)	445%	37%
Consent Monitoring	0	0	0	0		
Data Collection	0	1,225	0	1,225	0%	
Data Maintenance	3,000	9,507	1,113	8,394	12%	37%
Drain Inspection	4,500	2,041	1,475	565	72%	33%
Pump Operation	0	0	0	0		
Rates	0	0	0	0		
Meeting Expenses	2,700	0	715	(715)		26%
Insurance	500	0	0	0		0%
TOTAL	16,298	13,356	4,601	8,755	34%	28%
TOTAL OPERATING	230,567	166,395	30,932	135,463	19%	13%
Overheads						
Overheads	58,609	12,105	12,105	0	100%	21%
TOTAL	58,609	12,105	12,105	0	100%	21%
Depreciation						
Depreciation	25,896	54,425	54,425	0	100%	210%
TOTAL	25,896	54,425	54,425	0	100%	210%
Interest						
Interest	(16,783)	(36,786)	(36,786)	0	100%	219%
TOTAL	(16,783)	(36,786)	(36,786)	0	100%	219%
TOTAL EXPENDITURE	298,289	196,139	60,677	135,463	31%	20%

EASTERN PLAINS DRAINAGE DISTRICT WORK AREAS and PUMP LOCATIONS

