

# A G E N D A

## **PAEROA RURAL DRAINAGE DISTRICT COMMITTEE MEETING**

**Friday, 04 December 2020 10.30am**

Council Office  
Council Chambers  
William Street  
Paeroa



## Membership

### **Committee Members:**

His Worship the Mayor  
M Peters  
C Zydenbos  
P Casey  
T Hamilton

### **Council Rep:**

Councillor P Buckthought

### **Councillor Rep (alternate):**

Councillor R Garrett

### **Hauraki District Council staff:**

S de Laborde  
B Stephens  
A de Laborde  
Council Secretary

### **Waikato Regional Council staff:**

S Clark  
A Munro

**Delegations: Paeroa Rural Drainage Committee (PRDD)**

<b>Membership</b>	Land Drainage Advisory Committee consisting of one Councillor (with an alternate councillor) and members as scheduled from each of the Drainage Areas with the Paeroa Rural Drainage District: <ul style="list-style-type: none"><li>■ Two representatives of Komata North</li><li>■ One representative of Opukeko</li><li>■ Two representatives of Tirohia/Rotokohu</li></ul>
<b>Meeting frequency</b>	The first Thursday of the month - six monthly (dates to be confirmed).

The Council delegates to the Drainage Committee the following powers, duties and responsibilities:

- To make recommendations to the Council on all matters relating to Land Drainage within their respective Districts.
- To make recommendations on Council's operational and capital estimates for Council's Draft Long term Plan and Draft Annual Plans.
- To provide input to Land Drainage asset planning matters and Land Drainage rating reviews in their respective areas.
- To generally oversee and monitor the Council's annual work programmes within the nominated areas; and to assist as necessary or as appropriate in the implementation of approved programmes.
- To facilitate the flow of information between ratepayers and staff.



## **PAEROA RURAL DRAINAGE DISTRICT COMMITTEE**

### **AGENDA**

---

**Friday, 04 December 2020 – 10.30am**

**Council Chamber, Council Office, William Street, Paeroa**

---

<b><u>Order of Business</u></b>	<b>Pages</b>
1. Apologies	
2. Declarations of Late Items	
3. Confirmation: Paeroa Rural Drainage District Committee Minutes 07-08-20 - 2815395	<b>5</b>
4. Waikato Regional Council Update on Activities - S Clark	
5. Drainage Activity Report for October 2020 – 2867352	<b>7</b>
• Appendix A - Pump Running Hours 2020-2021	<b>10</b>
• Appendix B - Financial Report for the period 4 months to 31 October 2020	<b>15</b>
• Appendix C – Paeroa Rural District Drainage Areas Map	<b>18</b>
6. Member’s feedback on drainage matters in their areas.	

## HAURAKI DISTRICT COUNCIL

### PAEROA RURAL DRAINAGE DISTRICT COMMITTEE

MINUTES OF A MEETING OF THE PAEROA RURAL DRAINAGE DISTRICT COMMITTEE HELD IN THE COUNCIL CHAMBERS, WILLIAM STREET, PAEROA ON FRIDAY, 07 AUGUST 2020 COMMENCING AT 10.30AM

**PRESENT** Messrs M Peters (Chairperson), C Zydenbos, T Hamilton and Cr P Buckthought

**IN ATTENDANCE** Mr A de Laborde (Group Manager – Engineering Services), Mr S de Laborde ((Infrastructure Systems & Planning Manager), Mr B Stephens (Drainage Overseer) and Ms C Black (Council Secretary)

#### **APOLOGIES**

#### **RESOLVED**

THAT the apology of P Casey be received and sustained.

PRDD20/06

Hamilton/Zydenbos

**CARRIED**

#### **LATE ITEMS**

Pursuant to Section 46A(7) of the Local Government Official Information and Meetings Act 1987, the Chairperson called for late items to be accepted.

#### **RESOLVED**

THAT pursuant to Section 46A(7) of the Local Government Official Information and Meetings Act 1987, the following late items be accepted for discussion.

#### **- Mill Road Pump**

The item was not on the agenda because the item was unavailable at the time of the agenda deadline.

Discussion on the item could not be delayed because the item required the consideration of the Committee to decide on what course of action should be taken regarding the inoperability of the Mill Road pump.

CONFIRMATION: PAEROA RURAL DRAINAGE DISTRICT COMMITTEE MINUTES (04-06-20) (2770616)

#### **RESOLVED**

THAT the minutes of the meeting of the Eastern Plains Drainage District Committee held on Friday, 04 June 2020 be taken as read and confirmed as a correct record.

PRDD20/07

Buckthought/Zydenbos

**CARRIED**

#### **MATTERS ARISING FROM THE MINUTES**

There were no matters raised.

WRC Funded Projects Update

Adrian de Laborde provided an update on projects that have received funding from the WRC funding round.

PAEROA RURAL DRAINAGE DISTRICT DRAFT BUDGET REVIEW FOR 2021-2031

The Group Manager – Engineering Services and the Infrastructure Systems & Planning Manager took the members through the report and budget figures.

**RESOLVED**

THAT the report be received.

PRDD20/08

Peters/Zydenbos

**CARRIED**

There were no amendments made.

**RESOLVED**

THAT the Committee approves the draft budgets in Appendix A for recommendation to the Council.

PRDD20/09

Peters/Zydenbos

**CARRIED**

**LATE ITEM**Mill Road Pump

The Chair advised of his dissatisfaction that the Mill Road pump was out of commission for 12 months and requested that a letter is sent from Council requesting a response as to why it was out of service for so long.

**RESOLVED**

THAT the Paeroa Rural Drainage District Committee recommend to Council that a letter be sent to the Waikato Regional Council requesting an explanation as to why the Mill Road pump was out of commission for 12 months which has resulted in a unsatisfactory level of service for ratepayers.

PRDD20/10

Peters/Zydenbos

**CARRIED**

The meeting closed at 11.30am.

CONFIRMED

M Peters  
Chairperson

6 November 2020

## FOR INFORMATION NGĀ MŌHIOTANGA




---

TO	Paeroa Rural Drainage District Committee
AUTHOR	Steve de Laborde Infrastructure Systems and Planning Manager
FILE REFERENCE	Document: M2834566 Appendix A: Pump statistics Appendix B: Financials Appendix C: Paeroa Rural Drainage District
PORTFOLIO HOLDER/S	Councillor Phillip Buckthought Land Drainage and Flood Protection Portfolio
MEETING DATE	Friday, 4 December 2020
SUBJECT	<b>Paeroa Rural District Drainage Activity Report to October 2020</b>

### SUMMARY | TE WHAKARĀPOPOTANGA

To add to the woes of 2020, this October can be described as the 5th driest October according to the records started in 1974 at 352 Old Netherton Road (App. A, Fig 7). While this made the farmers nervous, it once again leaves the drainage system 'idle', including the pump stations.

### RECOMMENDATION | TE WHAIKUPU

THAT the report be received.

### 1 PURPOSE | TE ARONGA

The purpose of the report is to give the Committee a monthly update on the operations and capital work pertaining to the Land Drainage and Flood Protection activity in the Paeroa Rural Area.

### 2 BACKGROUND | TE KŌRERO Ā MUA

Hauraki District Council provides infrastructure for the land drainage activity in conjunction with the Waikato Regional Council. The land drainage network is comprised of pump stations, stopbanks, flood gates and land drains. It will soon be extended to include toe drains which are currently held by the Regional Council.

In general assets are classified as flood protection (primary) or drainage (secondary) assets where Waikato Regional Council own the flood protection assets and Hauraki District Council own the drainage assets. The land drainage service is provided to over 47,000 ha of highly productive pastoral land and the activity aims primarily to ensure the productive capability of the land.

### 3 CONTENT

The **Operations** report follows.

#### **Vegetation Control**

No drains in these areas have been sprayed during the period July to October 2020.

#### **Mechanical Cleaning**

No drains have been machined cleaned in these area from July to October 2020.

#### **Other works**

Routine maintenance has been undertaken in all areas. Also routine inspections of floodgates, culverts and pump stations have been undertaken and cleared as required. Specifically, in the following locations; the north floodgate was removed for repairs in July. The Ferry Road East floodgate was cleared during September.

The following man-hours were spent on screen cleaning in the following areas for the period May to October 2020. For Komata area, a total of 10 man-hours. For Opukeko area, a total of 40 man-hours and for Tirohia/Rotokohu area, a total of 38 man-hours.

#### **Pump Operation**

Regular inspection runs were undertaken in this period. Pump running hours to the end of June 2020 totalled 255 (67%) in Komata North, 517 (122%) in Opukeko and 2313 (181%) in Tirohia Rotokohu.

The total pump running hours for the last financial year was 3085 hours or 149% of the annual average.

Pump hours for May were 0 (0%) for Komata North, 2 (0%) for Opukeko and 0(0%) for Tirohia Rotokohu.

Pump hours for June were 118 (31%) for Komata North, 245 (58%) for Opukeko and 596 (47%) for Tirohia Rotokohu.

Pump hours for July were 16 (4%) for Komata North, 69 (16%) for Opukeko and 949 (74%) for Tirohia Rotokohu.

Pump hours for August were 0 (0%) for Komata North, 11 (3%) for Opukeko and 384 (30%) for Tirohia Rotokohu.

Pump hours for September were 0 (0%) for Komata North, 0 (0%) for Opukeko and 0 (0%) for Tirohia Rotokohu.

Pump hours for October were 0 (0%) for Komata North, 0 (0%) for Opukeko and 0 (0%) for Tirohia Rotokohu.

#### **Bylaw Approvals**

Bylaw approvals were granted in the period as follows:

Culverts: Nil

Other: Nil



**Subdivisions Commented On**

Subdivisions commented on during the period as follows:

Nil

**Pump station statistics** (Appendix A)

The pumps did some work last winter, but since August they have seen little to no action.

**Financial Comment** (Appendix B)

There is nothing out of the ordinary to comment on.

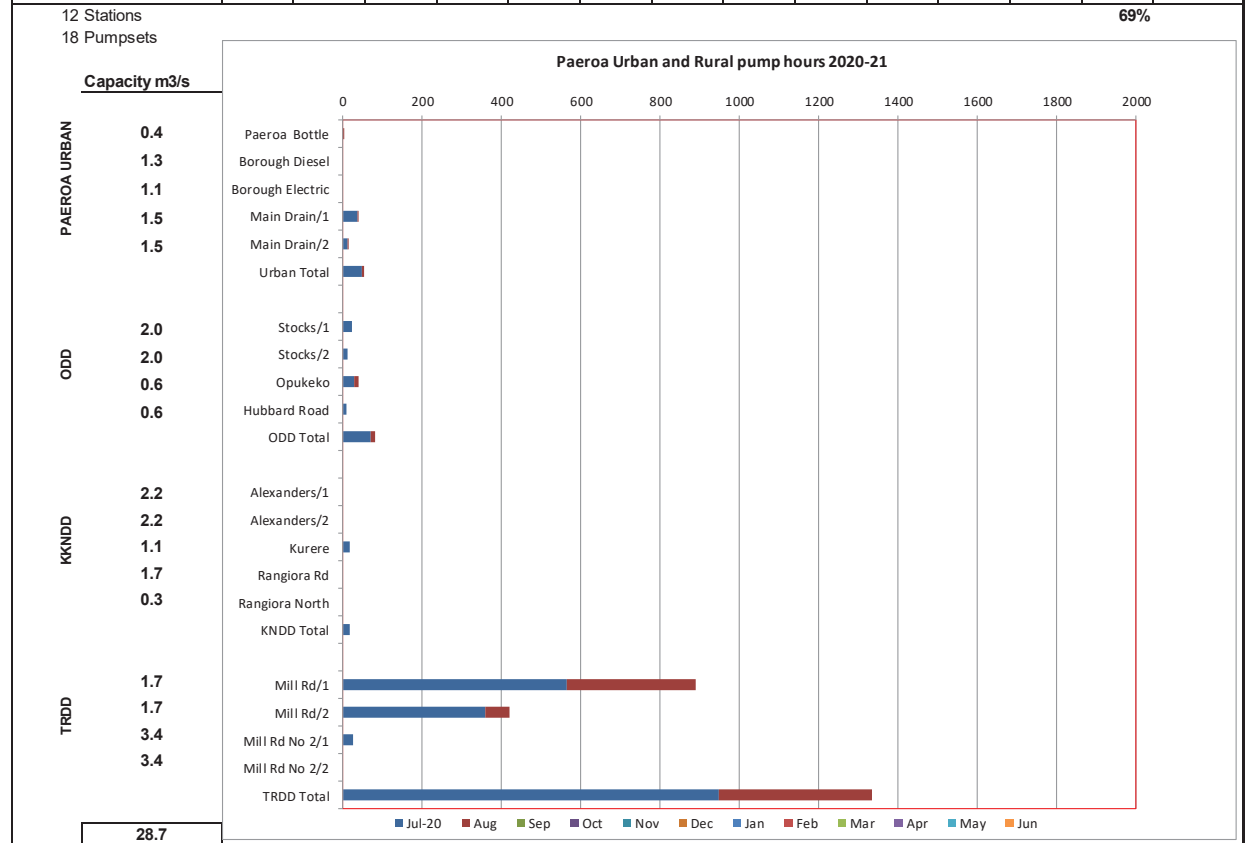
## Approval

<b>Prepared by</b>	Steve de Laborde Infrastructure Systems and Planning Manager
<b>Approved by</b>	Adrian de Laborde Engineering Group Manager

# APPENDIX A

## Paeroa Rural Drainage District – Pump Running Hours 2020-2021

Paeroa Urban & Rural	Jul-20	Aug	Sep	Oct	Nov	Dec	Jan	Feb	Mar	Apr	May	Jun	Total	Average
Paeroa Bottle	0	1	0	0	0	0	0	0	0	0	0	0	1	5
Borough Diesel	0	0	0	0	0	0	0	0	0	0	0	0	0	8
Borough Electric	0	0	0	0	0	0	0	0	0	0	0	0	0	10
No 54 Main Drain/1	37	2	0	0	0	0	0	0	0	0	0	0	39	75
Main Drain/2	11	2	0	0	0	0	0	0	0	0	0	0	13	99
<b>Urban Total</b>	<b>48</b>	<b>5</b>	<b>0</b>	<b>0</b>	<b>0</b>	<b>0</b>	<b>0</b>	<b>0</b>	<b>0</b>	<b>0</b>	<b>0</b>	<b>0</b>	<b>53</b>	<b>197</b>
<b>Opukeko</b>													<b>27%</b>	
No 56 Stocks/1	22	0	0	0	0	0	0	0	0	0	0	0	22	110
Stocks/2	11	0	0	0	0	0	0	0	0	0	0	0	11	97
No 64 Opukeko	28	11	0	0	0	0	0	0	0	0	0	0	39	132
No 63 Hubbard Road	8	0	0	0	0	0	0	0	0	0	0	0	8	85
<b>ODD Total</b>	<b>69</b>	<b>11</b>	<b>0</b>	<b>0</b>	<b>0</b>	<b>0</b>	<b>0</b>	<b>0</b>	<b>0</b>	<b>0</b>	<b>0</b>	<b>0</b>	<b>80</b>	<b>424</b>
<b>Komata</b>													<b>19%</b>	
No 57 Alexanders/1	0	0	0	0	0	0	0	0	0	0	0	0	0	30
Alexanders/2	0	0	0	0	0	0	0	0	0	0	0	0	0	31
No 60 Kurere	16	0	0	0	0	0	0	0	0	0	0	0	16	145
No 62 Rangiora Rd	0	0	0	0	0	0	0	0	0	0	0	0	0	50
No 69 Rangiora North	0	0	0	0	0	0	0	0	0	0	0	0	0	122
<b>KNDD Total</b>	<b>16</b>	<b>0</b>	<b>0</b>	<b>0</b>	<b>0</b>	<b>0</b>	<b>0</b>	<b>0</b>	<b>0</b>	<b>0</b>	<b>0</b>	<b>0</b>	<b>16</b>	<b>379</b>
<b>Tirohia</b>													<b>4%</b>	
No 52 Mill Rd/1	565	324	0	0	0	0	0	0	0	0	0	0	889	426
Mill Rd/2	360	60	0	0	0	0	0	0	0	0	0	0	420	632
No 58 Mill Rd No 2/1	24	0	0	0	0	0	0	0	0	0	0	0	24	108
Mill Rd No 2/2	0	0	0	0	0	0	0	0	0	0	0	0	0	108
<b>TRDD Total</b>	<b>949</b>	<b>384</b>	<b>0</b>	<b>0</b>	<b>0</b>	<b>0</b>	<b>0</b>	<b>0</b>	<b>0</b>	<b>0</b>	<b>0</b>	<b>0</b>	<b>1333</b>	<b>1275</b>
													<b>105%</b>	
<b>Paeroa Rural Total</b>	<b>1034</b>	<b>395</b>	<b>0</b>	<b>0</b>	<b>0</b>	<b>0</b>	<b>0</b>	<b>0</b>	<b>0</b>	<b>0</b>	<b>0</b>	<b>0</b>	<b>1429</b>	<b>2077</b>



**Paeroa Rural Drainage District – Annual Pump Running Hours**

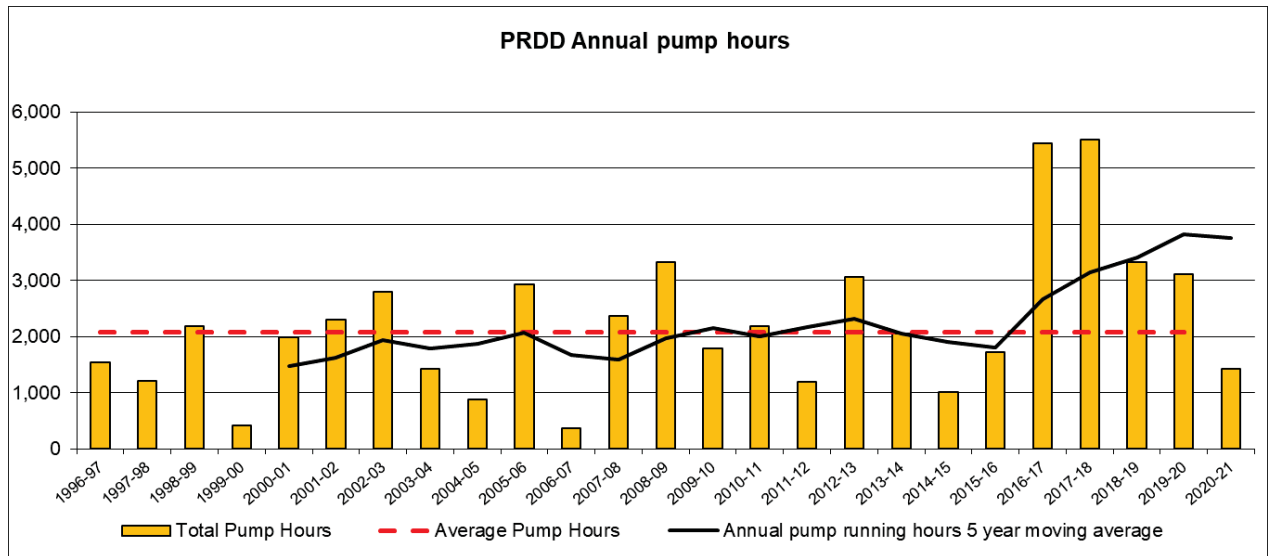


Figure 2

**Annual Pump Running Hours – All Districts**

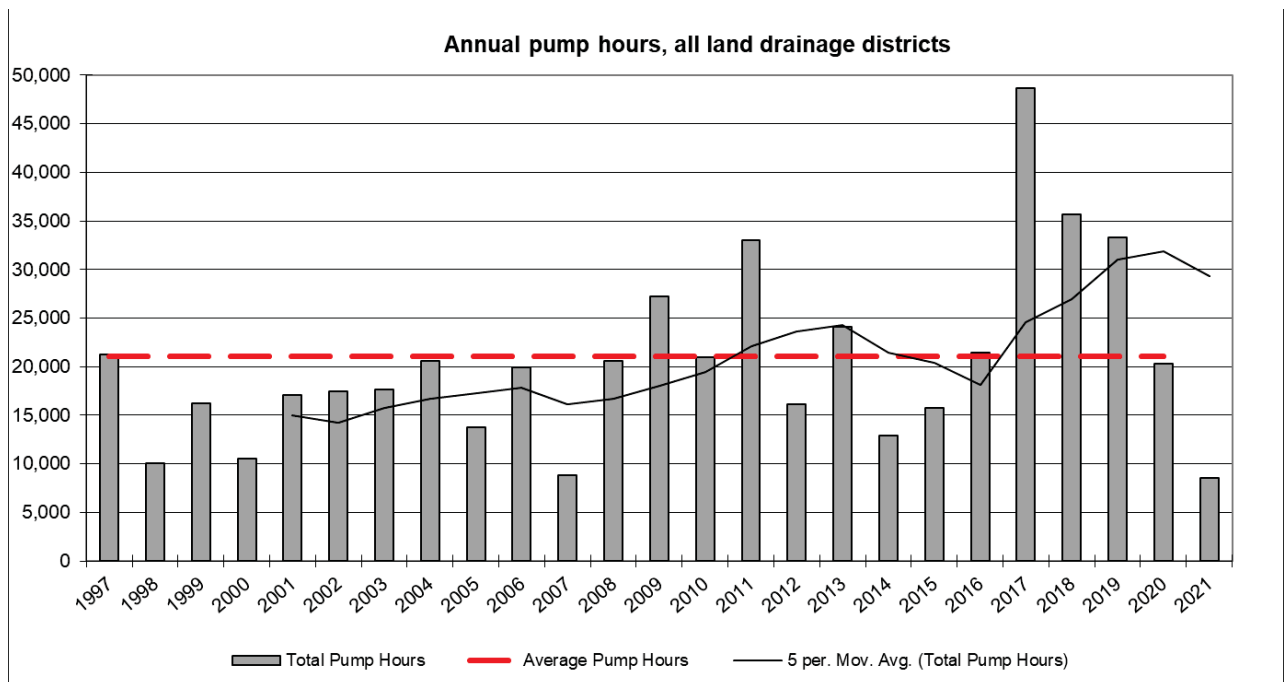


Figure 3

**Rainfall**

<b>Ngatea Monthly Rainfall</b>													
Haywards Road (to 1999). HDC Depot (2000 on)													
Year	Jan	Feb	Mar	Apr	May	Jun	Jul	Aug	Sep	Oct	Nov	Dec	Totals
1993	36.0	28.5	95.0	50.0	123.0	181.5	8.0	111.0	58.0	37.0	100.0	28.5	857
1994	81.0	47.5	51.5	64.0	78.0	116.0	155.0	100.5	153.0	112.5	30.0	26.5	1016
1995	37.0	71.0	196.5	245.5	88.5	181.0	203.5	74.0	73.0	94.0	136.5	128.5	1529
1996	29.5	89.5	88.5	227.5	82.0	166.5	137.5	147.0	149.0	34.0	72.5	222.0	1446
1997	4.5	51.0	195.0	58.0	97.5	138.5	64.5	65.5	221.5	61.0	39.0	49.0	1045
1998	12.0	97.0	67.0	48.0	56.5	97.0	299.0	104.0	48.0	100.0	85.0	89.0	1103
1999	81.0	28.0	81.0	91.0	45.0	94.5	142.0	132.0	88.0	53.0	206.5	109.5	1152
2000	60.0	11.5	52.5	171.0	85.0	75.5	154.5	114.0	97.5	48.0	96.5	79.0	1045
2001	16.5	156.5	49.0	169.0	165.5	50.0	74.5	121.0	47.5	134.0	114.0	177.0	1275
2002	117.0	39.5	50.5	62.0	61.0	168.5	135.0	79.0	75.5	73.0	34.5	54.0	950
2003	110.0	105.0	102.0	134.0	73.0	124.5	101.5	58.5	155.0	107.0	36.5	111.5	1219
2004	98.5	230.0	11.5	21.0	175.5	106.5	120.5	112.0	119.0	80.0	56.0	130.5	1261
2005	30.5	32.0	32.5	7.0	147.5	118.0	152.5	59.0	87.0	145.5	65.5	107.0	984
2006	37.0	47.5	34.5	120.0	82.0	86.0	76.0	108.0	57.0	90.5	64.0	36.0	839
2007	56.0	27.0	146.0	45.0	41.0	92.0	281.0	95.0	68.5	76.0	40.0	53.0	1021
2008	2.0	35.0	40.5	146.5	71.0	152.5	253.0	166.0	52.0	94.0	47.0	61.0	1121
2009	59.0	120.0	30.0	72.0	91.0	150.0	124.0	91.0	85.0	119.0	35.0	81.0	1057
2010	63.0	4.0	13.0	44.0	139.0	230.5	90.0	229.0	146.0	18.0	28.0	62.0	1067
2011	270.0	9.0	172.0	85.0	101.0	110.0	127.0	57.0	74.0	76.0	15.0	157.0	1253
2012	63.0	82.0	130.0	39.0	111.0	52.0	179.0	130.0	85.0	69.0	71.0	64.0	1075
2013	2.0	17.0	23.0	128.0	162.0	117.0	48.0	122.0	133.0	41.0	104.0	96.0	993
2014	41.0	8.0	35.0	98.0	42.0	237.0	109.0	110.0	137.0	73.0	50.0	72.0	1012
2015	10.0	44.0	79.0	114.0	136.0	59.0	121.0	185.0	96.0	51.0	125.0	19.0	1039
2016	103.0	167.0	39.0	51.0	96.0	137.0	152.0	100.0	162.0	82.0	66.0	50.0	1205
2017	24.0	107.0	341.0	255.0	142.0	63.0	131.0	98.0	127.0	117.0	50.0	9.0	1464
2018	100.0	213.0	49.0	127.0	106.0	175.0	116.0	119.0	46.0	134.0	93.0	228.0	1506
2019	21.0	15.0	40.0	98.0	52.0	59.0	128.0	157.0	105.0	84.0	40.0	54.0	853
2020	10.0	15.0	43.0	25.0	83.0	264.0	85.0	116.0	43.0	23.0			707
Ave.	56	68	82	100	98	129	135	113	100	80	70	87	1110
Max	270	230	341	255	176	264	299	229	222	146	207	228	1529
Min.	2	4	12	7	41	50	8	57	43	18	15	9	707

Figure 4

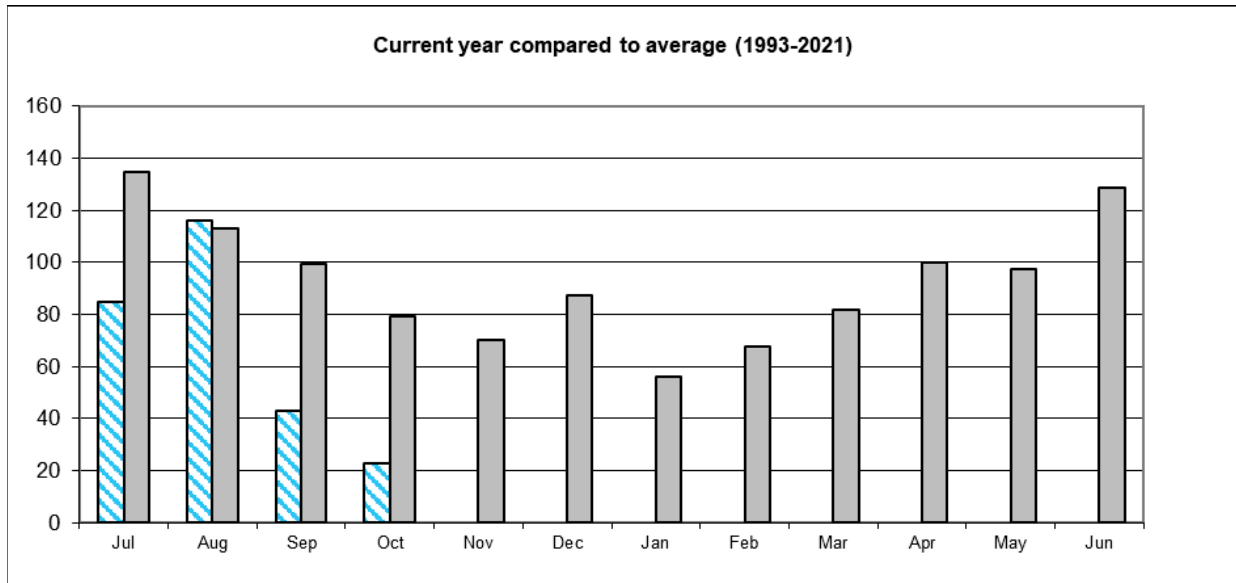


Figure 5

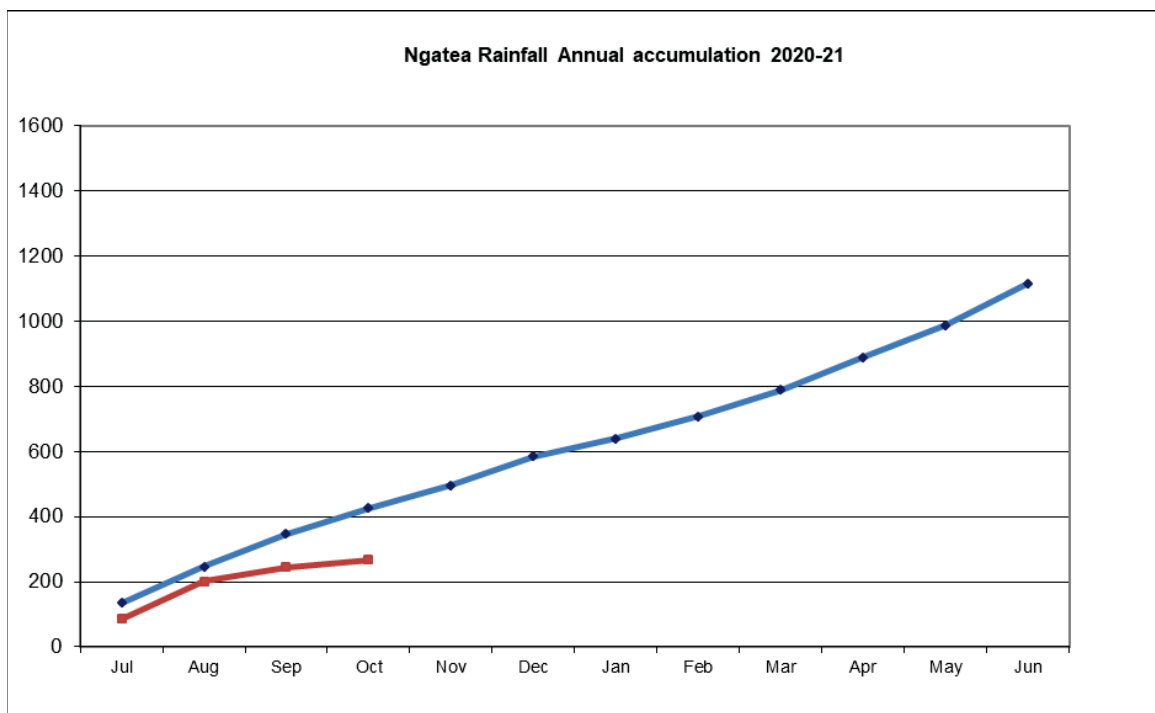


Figure 6

The graph below shows the rainfall figures for the month of October from 1974-2020. October 2020 has been the fifth driest October since these records began. A pattern may be emerging.

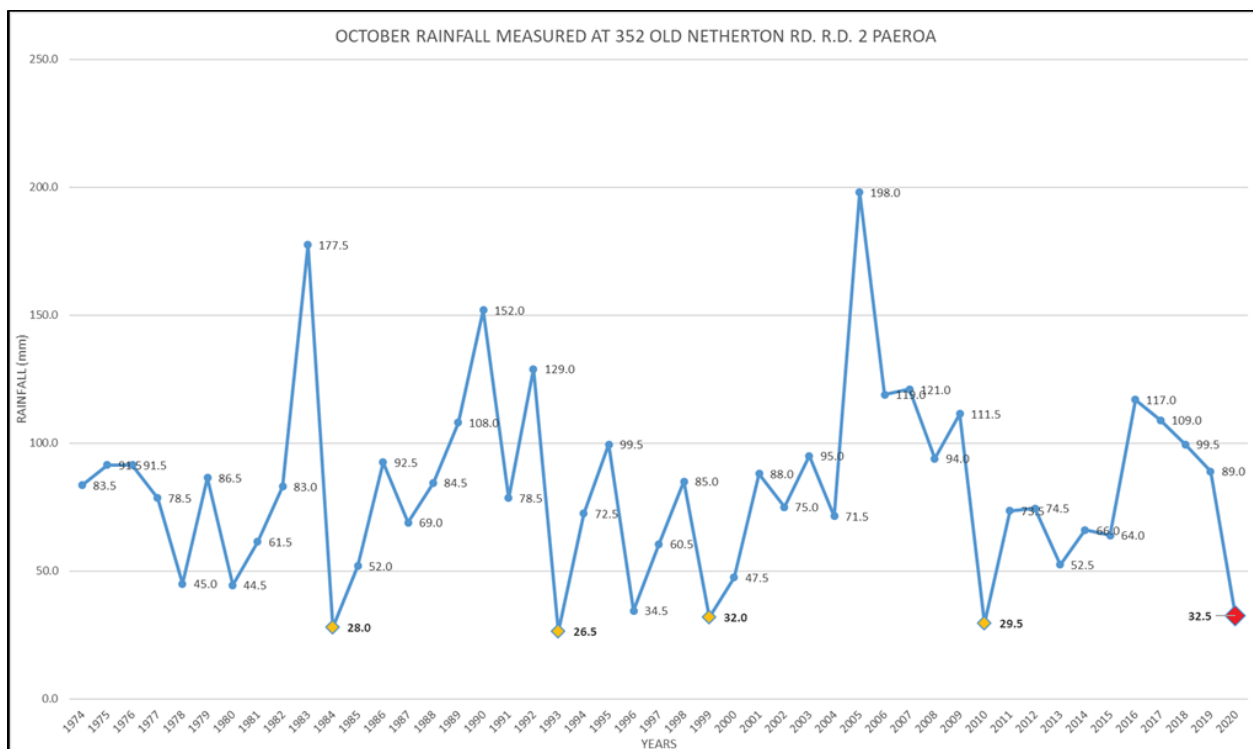


Figure 7

## Appendix B: Financials

<b>Paeroa Rural Drainage District</b>						
<b>Financial Report for 4 months to 31 October 2020</b>						
<b>Item</b>	<b>Total Budget</b>	<b>Budget YTD</b>	<b>Actual YTD</b>	<b>Variance</b>	<b>Actual % of YTD Budget</b>	<b>Actual % of Total Budget</b>
<b>DRAINAGE OPERATIONS</b>						
<b>Komata North</b>						
Vegetation Control	20,000	0	0	0		0%
Mechanical Cleaning	15,000	0	0	0		0%
Maintenance/Fencing/Culverts	1,537	0	0	0		0%
<b>TOTAL DRAIN MAINTENANCE</b>	<b>36,537</b>	<b>0</b>	<b>0</b>	<b>0</b>		<b>0%</b>
<b>Pumps</b>						
General	1,663	370	370	0	100%	22%
Komata Pumps	7,000	338	338	0	100%	5%
<b>TOTAL</b>	<b>8,663</b>	<b>708</b>	<b>708</b>	<b>0</b>	<b>100%</b>	<b>8%</b>
<b>Floodgates</b>						
	738	559	559	0	100%	76%
<b>TOTAL</b>	<b>738</b>	<b>559</b>	<b>559</b>	<b>0</b>	<b>100%</b>	<b>76%</b>
<b>Stopbanks</b>						
Tributary Banks	0	0	0	0		
<b>TOTAL</b>	<b>0</b>	<b>0</b>	<b>0</b>	<b>0</b>		
<b>Other</b>						
Weather Events	632	211	0	211	0%	0%
Asset Liaison	842	281	0	281	0%	0%
Data Collection	0	0	0	0		
Data Maintenance	0	0	0	0		
Drain Inspection	1,683	561	0	561	0%	0%
Rates				0		
Meeting Expenses	211	70	0	70	0%	0%
Insurance	3,158	1,053	0	1,053	0%	0%
<b>TOTAL</b>	<b>6,526</b>	<b>2,175</b>	<b>0</b>	<b>2,175</b>	<b>0%</b>	<b>0%</b>
<b>TOTAL OPERATING</b>	<b>52,464</b>	<b>3,442</b>	<b>1,267</b>	<b>2,175</b>	<b>37%</b>	<b>2%</b>
<b>Overheads</b>						
Overheads	24,919	8,306	0	8,306	0%	0%
<b>TOTAL</b>	<b>24,919</b>	<b>8,306</b>	<b>0</b>	<b>8,306</b>	<b>0%</b>	<b>0%</b>
<b>Depreciation</b>						
Depreciation	31,353	10,451	10,451	0	100%	33%
<b>TOTAL</b>	<b>31,353</b>	<b>10,451</b>	<b>10,451</b>	<b>0</b>	<b>100%</b>	<b>33%</b>
<b>Interest</b>						
Interest	(15,765)	(5,255)	(5,255)	0	100%	33%
<b>TOTAL</b>	<b>(15,765)</b>	<b>(5,255)</b>	<b>(5,255)</b>	<b>0</b>	<b>100%</b>	<b>33%</b>
				0		
<b>TOTAL EXPENDITURE Komata North</b>	<b>92,971</b>	<b>16,945</b>	<b>6,463</b>	<b>10,482</b>	<b>38%</b>	<b>7%</b>
<b>INCOME</b>						
Rates Funding	(68,987)	(22,996)	(22,996)	0	100%	33%
<b>Opening Balance as at 01/07/2020</b>	<b>(485,362)</b>					

Item	Total Budget	Budget YTD	Actual YTD	Variance	Actual % of YTD Budget	Actual % of Total Budget
<b>Opukeko</b>						
Vegetation Control	3,000	82	82	0	100%	3%
Mechanical Cleaning	4,000	833	833	0	100%	21%
Maintenance/Fencing/Culverts	421	0	0	0		0%
<b>TOTAL DRAIN MAINTENANCE</b>	<b>7,421</b>	<b>915</b>	<b>915</b>	<b>0</b>	<b>100%</b>	<b>12%</b>
<b>Pumps</b>						
General	1,432	255	255	0	100%	18%
Opukeko Pumps	14,500	2,174	2,174	0	100%	15%
<b>TOTAL</b>	<b>15,932</b>	<b>2,429</b>	<b>2,429</b>	<b>0</b>	<b>100%</b>	<b>15%</b>
<b>Floodgates</b>						
	336	0	0	0		0%
<b>TOTAL</b>	<b>336</b>	<b>0</b>	<b>0</b>	<b>0</b>		<b>0%</b>
<b>Other</b>						
Weather Events	421	140	0	140	0%	0%
Asset Liaison	632	211	0	211	0%	0%
Data Collection	0	0	0	0		
Data Maintenance	0	0	0	0		
Drain Inspection	632	211	0	211	0%	0%
Rates				0		
Meeting Expenses	209	70	0	70	0%	0%
Insurance	316	105	0	105	0%	0%
<b>TOTAL</b>	<b>2,210</b>	<b>737</b>	<b>0</b>	<b>737</b>	<b>0%</b>	<b>0%</b>
<b>TOTAL OPERATING</b>	<b>25,899</b>	<b>4,081</b>	<b>3,344</b>	<b>737</b>	<b>82%</b>	<b>13%</b>
<b>Overheads</b>						
Overheads	17,433	5,811	5,811	0	100%	33%
<b>TOTAL</b>	<b>17,433</b>	<b>5,811</b>	<b>5,811</b>	<b>0</b>	<b>100%</b>	<b>33%</b>
<b>Depreciation</b>						
Depreciation				0		
<b>TOTAL</b>	<b>0</b>	<b>0</b>	<b>0</b>	<b>0</b>		
<b>Interest</b>						
Interest	302	101	101	0	100%	33%
<b>TOTAL</b>	<b>302</b>	<b>101</b>	<b>101</b>	<b>0</b>	<b>100%</b>	<b>33%</b>
<b>TOTAL EXPENDITURE Opukeko</b>	<b>43,634</b>	<b>9,992</b>	<b>9,256</b>	<b>737</b>	<b>93%</b>	<b>21%</b>
<b>INCOME</b>						
Rates Funding	(39,612)	(13,204)	(13,204)			
<b>Opening Balance as at 01 July 2020</b>	<b>943</b>					<b>0</b>



Item	Total Budget	Budget YTD	Actual YTD	Variance	Actual % of YTD Budget	Actual % of Total Budget
<b>Tirohia</b>						
Vegetation Control	15,000	82	82	0	100%	1%
Mechanical Cleaning	12,000	720	720	0	100%	6%
Maintenance/Fencing/Culverts	1,685	0	0	0		0%
<b>TOTAL DRAIN MAINTENANCE</b>	<b>28,685</b>	<b>802</b>	<b>802</b>	<b>0</b>	<b>100%</b>	<b>3%</b>
<b>Pumps</b>						
General	2,400	1,099	1,099	0	100%	46%
Tirohia Pumps	40,000	4,684	4,684	0	100%	12%
<b>TOTAL</b>	<b>42,400</b>	<b>5,783</b>	<b>5,783</b>	<b>0</b>	<b>100%</b>	<b>14%</b>
<b>Floodgates</b>						
Floodgates	1,566	468	468	0	100%	30%
<b>TOTAL</b>	<b>1,566</b>	<b>468</b>	<b>468</b>	<b>0</b>	<b>100%</b>	<b>30%</b>
<b>Stopbanks</b>						
Tributary Banks				0		
<b>TOTAL</b>	<b>0</b>	<b>0</b>	<b>0</b>	<b>0</b>		
<b>Other</b>						
Weather Events	842	281	0	281	0%	0%
Asset Liaison	632	211	0	211	0%	0%
Data Collection				0		
Data Maintenance	0	0	0	0		
Drain Inspection	633	211	0	211	0%	0%
Pump Operation	0	0	0	0		
Rates				0		
Appointed Member Expenses				0		
Meeting Expenses	211	70	0	70	0%	0%
Insurance	1,895	632	0	632	0%	0%
<b>TOTAL</b>	<b>4,213</b>	<b>1,404</b>	<b>0</b>	<b>1,404</b>	<b>0%</b>	<b>0%</b>
<b>TOTAL OPERATING</b>	<b>76,864</b>	<b>8,457</b>	<b>7,053</b>	<b>1,404</b>	<b>83%</b>	<b>9%</b>
<b>Overheads</b>						
Overheads	27,334	9,111	0	9,111	0%	0%
<b>TOTAL</b>	<b>27,334</b>	<b>9,111</b>	<b>0</b>	<b>9,111</b>	<b>0%</b>	<b>0%</b>
<b>Depreciation</b>						
Depreciation	33,502	11,167	11,167	0	100%	33%
<b>TOTAL</b>	<b>33,502</b>	<b>11,167</b>	<b>11,167</b>	<b>0</b>	<b>100%</b>	<b>33%</b>
<b>Interest</b>						
Interest	(10,782)	(3,594)	(3,594)	0	100%	33%
<b>TOTAL</b>	<b>(10,782)</b>	<b>(3,594)</b>	<b>(3,594)</b>	<b>0</b>	<b>100%</b>	<b>33%</b>
				0		
<b>TOTAL EXPENDITURE Tirohia</b>	<b>126,918</b>	<b>25,142</b>	<b>14,626</b>	<b>10,516</b>	<b>58%</b>	<b>12%</b>
<b>INCOME</b>						
Rates Funding	-126,305	-42,102	-42,102			
<b>Opening Balance as at 01 July 2020</b>	<b>(372,511)</b>					
<b>TOTAL DRAINAGE EXPENDITURE</b>	<b>263,523</b>	<b>52,079</b>	<b>30,345</b>	<b>21,734</b>	<b>58%</b>	<b>12%</b>

### Appendix C: Paeroa Rural Drainage District

