

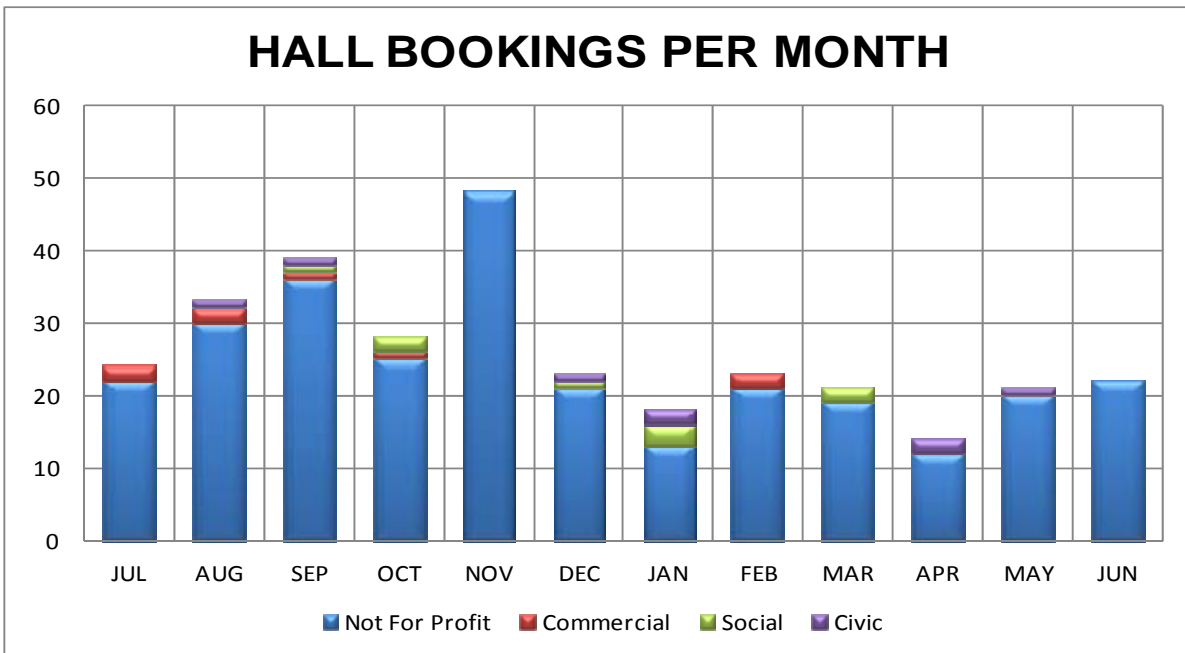
To: Waihi Ward Committee
From: Community Services Department
Date: 13 June 2012
File reference & attachments: Document : 908150
 914627
Meeting date: 10 July 2012
Subject: Monthly Report – July 2012

RECOMMENDATIONS:

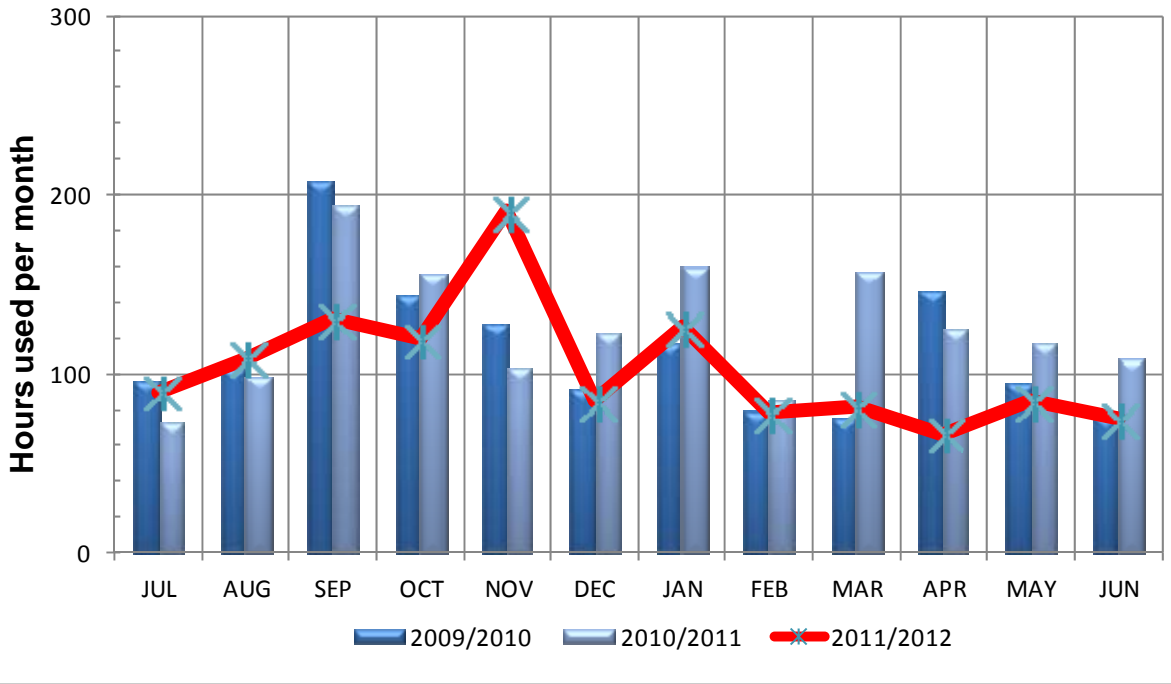
THAT the report be received, and
 THAT the request to mow the area adjacent to Stringer Lane and Poland Street be considered.

COMMUNITY FACILITIES

War Memorial Hall (365282)

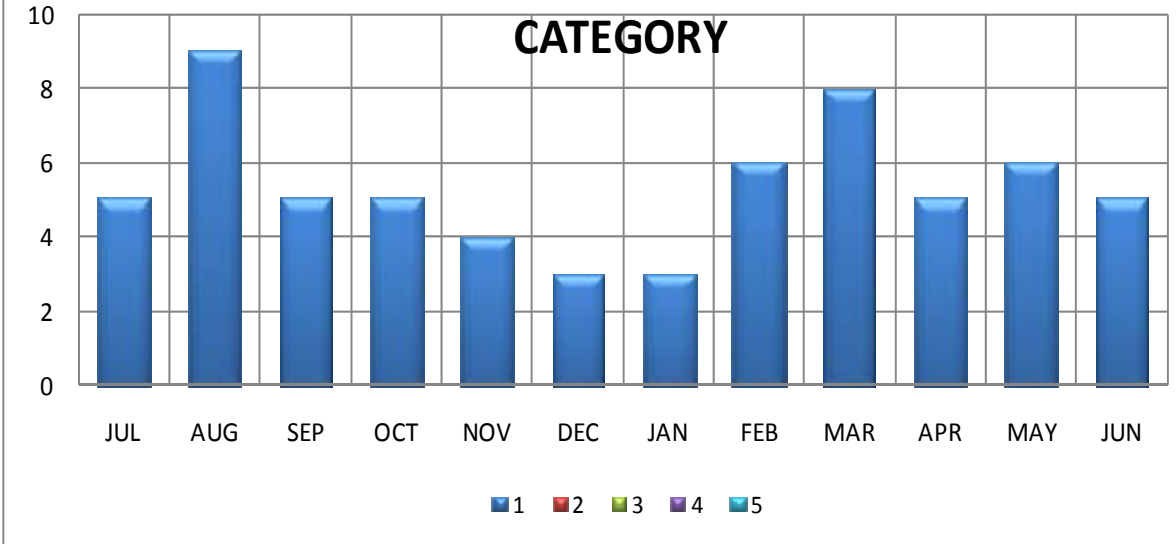


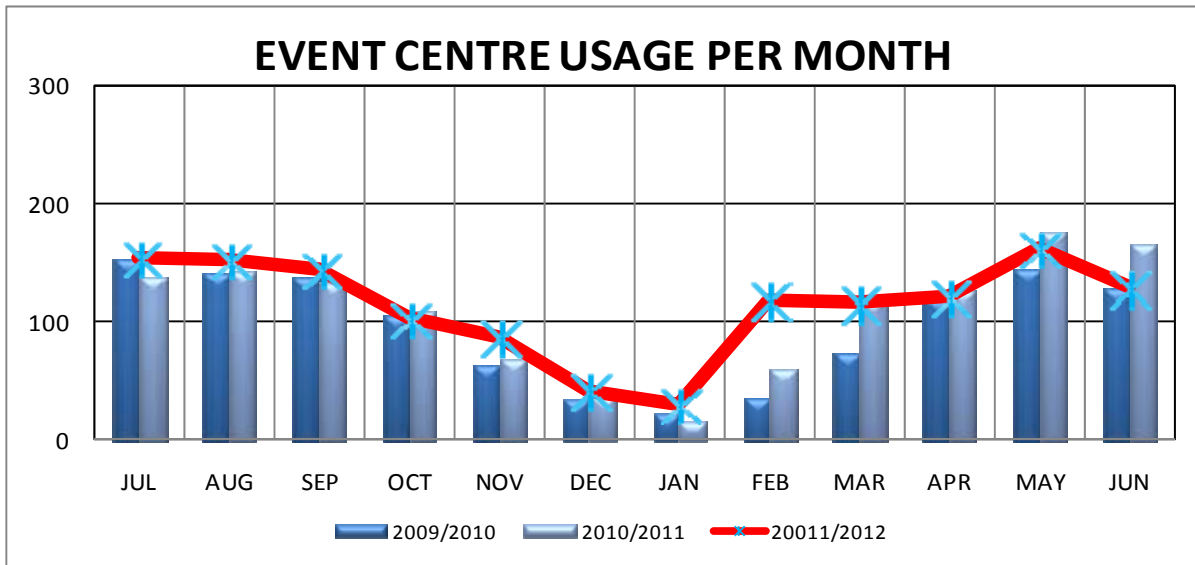
WAIHI MEMORIAL HALL HOURS OF USE



Event Centre Waihi (365183)

EVENT CENTRE BOOKINGS PER MONTH BY CATEGORY





Pensioner Housing

There is one unit available in Waihi for rent.

ANNUAL PLAN PROJECTS 2011/12 CARRIED FORWARD

Project	Description	Budget	Funding
Town Centre Indicators	To renew the internal town indicators / signage.	\$5,000	2011/12 Annual Plan
<u>Project Status:</u> A meeting with Ward Councilors on the 4 th April 2012 determined that this projects budget may be more appropriately used for signage from the cycle way terminus to the town centre. Once the Waikino to Waihi leg is completed staff and Councilors will be able to determine the most effective signage to direct people to the town centre			
Pump House Retaining Wall	To enhance the town's beautification near the Pump house retaining wall.	\$40,000	2011/12 Annual Plan
<u>Project Status:</u> This project is well underway.			
Pohutukawa Reserve	To upgrade the Pohutukawa Reserve in Whiritoa.	\$55,000	2011/12 Annual Plan
<u>Project Status:</u> The Ward have agreed to carry this project over to 2012/13			
Project	Description	Budget	Funding
Waihi Cemetery Internal Signs	To install internal signage around Waihi Cemetery.	\$3,000	2011/12 Annual Plan
<u>Project Status:</u> There is no specified start date for this project. Staff is presently implementing a new signage policy that will provide specific guidelines for signage renewals across the District.			

Gilmour Lake Reserve Renewals	To renew picnic tables in Gilmour Lake Reserve.	\$4,000	2011/12 Annual Plan
Project Status: This project is underway.			
Victoria Park Car park Renewal	To renew the car park surface at Victoria Park.	\$20,000	2011/12 Annual Plan
Project Status: This project is completed.			
Waihi Town Entrance Signage Renewals	To upgrade the appearance of the welcome signs coming into Waihi Township.	\$6,000	2011/12 Annual Plan
Project Status: This project is about to start.			
Waihi Main Street Lighting	Additional Christmas Lighting for Waihi Main street	\$15,000	Ward Project
Project Status: Additional Christmas lighting for the Main Street light poles has been ordered.			

ANNUAL PLAN PROJECTS 2012/13

Project	Description	Budget	Funding
Waihi Memorial Hall building renewals	Main hall - replace curtains - Interior Painting - Polyurethane floor and stage New carpet in supper room and foyer	\$40,000	2012/2013 Annual Plan
Project Status: This work is scheduled for completion in the months of October and December 2012 and will be project managed by The Community Services – Facilities Manager			
Project	Description	Budget	Funding
Victoria Street Toilets renewals	Victoria Street Toilet, general renewals	\$6,000	2012/2013 Annual Plan
Project Status: This work is scheduled for January 2013 completion in and will be project managed by the Community Services – Facilities Manager.			

Project	Description	Budget	Funding
Gilmore Reserve Toilets, renewals	Gilmour Reserve maintenance Renewals	\$10,000	2012/2013 Annual Plan
<u>Project Status</u>			
This work is scheduled for September 2012 completion in and will be project managed by The Community Services – Facilities Manager.			
Project	Description	Budget	Funding
Waihi Cemetery renewals	Waihi Cemetery Reseal Roadways	\$70,000	2012/2013 Annual Plan
<u>Project Status</u>			
This work is scheduled for completion in October 2012 and will be project managed by the Parks & Reserves Manager.			
Project	Description	Budget	Funding
Waihi Cemetery renewals	Waihi Cemetery maintenance Renewals	\$2,000	2012/2013 Annual Plan
<u>Project Status:</u>			
This work is scheduled for completion in December 2012 and will be project managed by the Parks & Reserves Manager.			
Project	Description	Budget	Funding
Waihi Pool, Building repaint	Waihi Building repaint	\$6,000	2012/2013 Annual Plan
<u>Project Status:</u>			
This work is scheduled for completion in October 2012 and will be project managed by the Parks & Reserves Manager			
Project	Description	Budget	Funding
Morgan Park Renewals	Morgan Park maintenance Renewals	\$2,000	2012/2013 Annual Plan
<u>Project Status:</u>			
This work is scheduled for completion in January 2013 and will be project managed by the Parks & Reserves Manager			

Project	Description	Budget	Funding
Waihi Cycleway extension	Waihi Cycleway Railway Station to Town Centre	\$15,000	2012/2013 Annual Plan
<u>Project Status</u>			
This work is scheduled for completion in 2012/13 and will be project managed by Tech Services. Staff is asking for feedback from the Ward members as to their preference to a suitable route from the proposed Rail Trail Terminus to the Town centre.			
Project	Description	Budget	Funding
Whiritoa Reserves Maintenance	Whiritoa Reserves general maintenance Renewals	\$3,000	2012/2013 Annual Plan
<u>Project Status:</u>			
This work is scheduled for completion in November 2012 and will be project managed by the Parks & Reserves Manager			
Project	Description	Budget	Funding
Waihi Minor Reserves, maintenance renewals	Waihi Minor Reserves Miscellaneous Renewals	\$5,000	2012/2013 Annual Plan
<u>Project Status:</u>			
This work is scheduled for completion in November 2012 and will be project managed by the Parks & Reserves Manager.			
Project	Description	Budget	Funding
Victoria Park Maintenance renewals	Victoria Park maintenance Renewals	\$5,000	2012/2013 Annual Plan
<u>Project Status</u>			
This work is scheduled for completion in August 2012 and will be project managed by the Parks & Reserves Manager.			
Project	Description	Budget	Funding
Victoria Park, Park furniture	Victoria Park New Park Furniture	\$5,000	2012/2013 Annual Plan
<u>Project Status:</u>			
This work is scheduled for completion in August 2012 and will be project managed by the Parks & Reserves Manager.			

Project	Description	Budget	Funding
New Junior Playground at Gilmour Lake	Gilmour Lake Junior Playground	\$45,000	2012/2013 Annual Plan
<u>Project Status:</u> This work is scheduled for completion in October 2012 and will be project managed by the Parks & Reserves Manager.			
Project	Description	Budget	Funding
Gilmore Lake, Walkway concreting	Gilmour Lake Walkway Concreting	\$22,000	2012/2013 Annual Plan
<u>Project Status:</u> This work is scheduled for completion in October 2012 and will be project managed by C&M			
Project	Description	Budget	Funding
Waihi Walkway Development	Waihi Ohinemuri Walkway Black Bridge	\$145,000	2012/2013 Annual Plan
<u>Project Status:</u> This work is scheduled for completion in 2012/13 and will be project managed by Tech services			
Project	Description	Budget	Funding
Waihi CBD renewals	Waihi Main Street Promotional Brackets	\$6,000	2012/2013 Annual Plan
<u>Project Status:</u> This work is scheduled for completion in 2012/13 and will be project managed by Community Development Officer			

Swimming Pool Report

Recently a debrief meeting was held to discuss the pool season and the issues both positive and identified improvement items that eventuated over the season.

Kirsty (Pool Supervisor) had contacted all the lifeguards who had passed on any issues that they had encountered over the season. The main and relevant ones are as follows:

Season Positives

1. Working at a specific pool rather than between pools.
2. Having the supervisor attending the pool regularly.
3. Pool side seat.
4. Extra pool toy.
5. Learn to swim.
6. Team leaders needs to be tweaked if supervisor is going to pools regularly
7. 2 on in morning good and life guards felt safe

Improvement Items

1. Cash collection.
2. Having the pool tills electronically connected to Councils computer system.
3. When users don't attend the pre-season meeting they are either contacted for a meeting or sent the minutes from the meeting held.
4. Improved relationships with some school staff and some swim club volunteers.
5. Code of Practice / Guidelines to go to all schools and swim clubs.
6. Hours and length of season was requested to be longer was requested by users.
7. Aqua aerobics was requested by users
8. Discuss rubbish and food being left in changing rooms at Waihi with Principal.
9. See if any thing can be done with Waihi changing room's floor to help with washing out.
10. Current laptop needs addressing as it keeps crashing.

While a lot of these are operational issues for staff to work through, the final decision on the season opening period will be brought back to the Ward for their approval. The schools and Swim clubs are being approached over the next month to get their requirements and views of season length and opening hours.

Overall, it was a season that ran very smoothly mostly because of the way the lifeguards worked together and the way that the pool supervisor guided them and lead by example. It is hoped that the majority of life guards will return next season.

Waikino - Request to Mow

A request has been received to mow an area in Waikino adjacent to Stringer Lane and Poland Street. The letter of request and an aerial map showing the area is attached.

RECOMMENDATION

THAT the correspondence be received, and
THAT the request to mow the area adjacent to Stringer Lane and Poland Street be considered.

Future Ward Report Items

The Community Services Manager wishes to discuss with the Ward Members suggested future Ward Report items and seek feedback as to what additional items they would like to seek included.

Robyn Kirby
Facilities Manager

Steve Clark
Parks & Reserves Manager