

Historic Heritage Inventory



Former BNZ Building, Paeroa (Nick Hoogeveen & Associates Accountants Office)



Circa 2005 or 06

Location: Cnr Normanby Road, Princes & Wharf Streets, (1 Princes Street), Paeroa

Heritage Status

Historic Places Trust Registration Number:

Historic Places Trust Category:

HDC Heritage Category: **A** - Heritage Feature. National or Outstanding Regional Significance

Other:

District Plan Schedule

Number: **HAU039**

Heritage Category: **A**

Heritage Type:

- Wahi Tapu
- Cultural Landscape
- Building
- Group of Buildings
- Structure
- Monument
- Historic Place
- Archaeological Site
- Other

Date Period:

1940-1980

Significance:

- Archaeological
- Architectural
- Cultural
- Historic
- Scientific
- Technological

Thematic Context

- Maori
- Early Settlement
- Industry
- Extraction
- Forestry
- Agriculture
- Transport
- Communication
- Commerce
- Residential
- Social/Cultural
- Civic
- Health
- Educational
- Church/yard
- Other

Historic Heritage Inventory



Former BNZ Building, Paeroa (Nick Hoogeveen & Associates Accountants Office)

District Plan Schedule

Number: **HAU039**

Heritage Category: **A**

Physical Description: The (former) BNZ building is located at the intersection of Normanby Road, Wharf and Princes Streets. The two storey office building has a rounded corner with recessed entry below a recessed balcony. The building is symmetrical in design with a wide base course with granite footing and pilasters at the corner that frame the recessed entry and balcony. Black marble (?) entry floor. Spandrels are located between the windows of the two storeys to emphasise the vertical design of the building. A cartouche is located above the balcony. Ornamental metal work is located on the lower quarter of the windows. The top quarter of some of the windows have been covered over.

The BNZ building is a prominent building located on Paeroa's post office square. The BNZ building adds significantly to the character of Paeroa and the streetscape. It complements and is complemented by the Post Office, RSA Club, and Regent Theatre. The BNZ building is the best example of an art deco office building in Hauraki District.

Other known names: (current 2010) Nick Hoogeveen & Assoc.

Notable features: Rounded corner and recessed entry and balcony. Low relief ornamentation (pilasters, spandrels, and cartouche) and wrought iron.

Style: Art Deco

Materials: Reinforced concrete, fibrolite roof (originally)

Date of Construction: 1940

History: The Bank of New Zealand was founded in Auckland in the 1860s by Thomas Russell and John Campbell. When gold was discovered in Thames, a branch was quickly set up in 1868. Paeroa became an important supply post in the late 1870s and a branch of the BNZ was established in 1881. George Burgess was Paeroa's first branch manager. The original BNZ building was a single storied wooden structure with an iron roof and verandah, located on the corner of Normanby Road and Victoria St. A new site was purchased in 1892 and a two storey building was subsequent built on Victoria St. The 1892 building had deteriorated significantly by 1923 due to dryrot and borer and the manager of the time, AF Steedman, proposed the bank be relocated. In 1938 the site on the corner of Wharf Street and Normanby Road was purchased. The bank manager, Mr Walter Rowan, wrote at the time that dairying was the chief industry and the bank was prosperous. The Bank profits rose from 1929 to 1939 with minor fluctuations.

Architect Richard Atkinson Abbot was engaged to design the new Paeroa BNZ building. Abbot was noted for designing many significant structures. He won the competition for the design of Auckland Grammar School in 1913, an inter-war Spanish Mission design, which was novel in New Zealand. Some of Abbot's designs were inspired by his training in England, Paris and travel in the U.S.

Historic Heritage Inventory



Former BNZ Building, Paeroa (Nick Hoogeveen & Associates Accountants Office)

District Plan Schedule

Number: **HAU039**

Heritage Category: **A**

where he spent considerable time in San Francisco. He designed King's College from 1922 onward. He is particularly noted for the King's College chapel, completed in 1925. Abbot also designed a large number of other BNZ buildings over the years.

Construction of the BNZ building was completed in 1940 and the branch opened on 18 August 1941. In 2006, the building was sold by the BNZ to Netherfield Investments Ltd. The building is currently used as accountants' offices.

Architect:

Designer: R.A. Abbott

Builder: P.W. Peate

Engineer:

History of changes: In 1963 alterations were made to the interior of the building. The work "included placing the Manager's room, Securities and Accountant's office in the two shops which formed part of the original building" (Griffin 1981:41). The staff recreation facilities were expanded into the Manager's former office. The work was supervised by architect GW Johnston. In 1981 the building interior was again altered. The alterations were not documented in the BNZ History. The work was carried out by GN McCabe of Te Aroha. In 2009 internal alterations were undertaken to provide for accounting offices. Minor exterior alterations were also undertaken and consent was given by HDC for removal of the verandah on the Princes Street side of the building.

Condition: Good

Integrity: Exterior substantially intact, interior modifications

Current Uses: Accounting Office

Former Uses: Bank

Registered owner: Netherfield Investments Ltd

Legal Description: Pt Lots 28, 29 DP 247

Reference Source: Council property file & Hearings Committee DOC 515813. Griffin, RH 1981 Paeroa 1881-1981— A BNZ Century. BNZ Archives, Wellington. Ohinemuri Journal 51-37.

Salmon, Jeremy 2010 Dictionary of New Zealand Biography. www.dnzb.govt.nz
Simmons and Associates, 2001 Architect Notebook, Misc files.

Historic Heritage Inventory

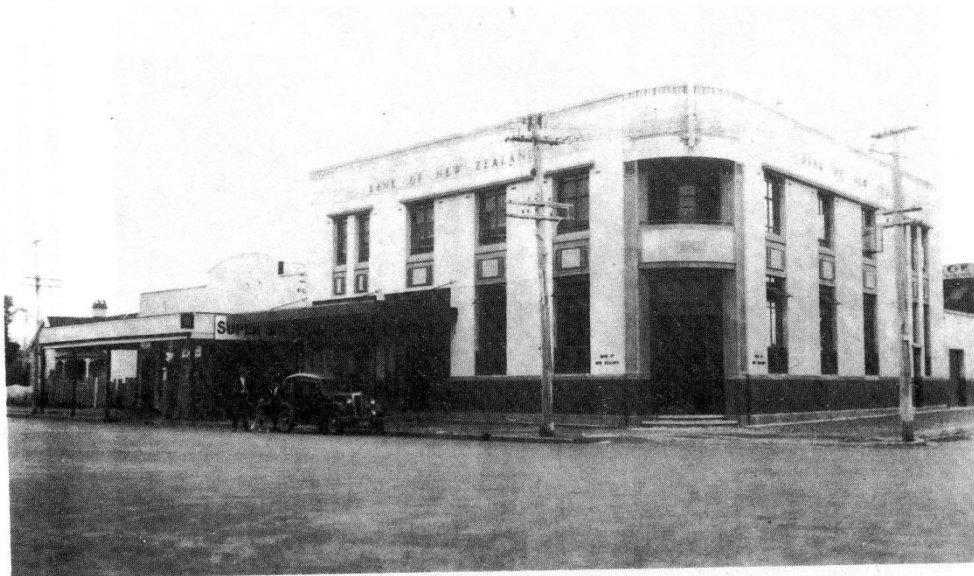
Former BNZ Building, Paeroa (Nick Hoogeveen & Associates Accountants Office)

District Plan Schedule

Number: **HAU039**

Heritage Category: A

Associated Pictures:



The present BNZ, in 1941, showing the shops on the left. (BNZ Archives.)

(Source RH Griffin 1981:40)