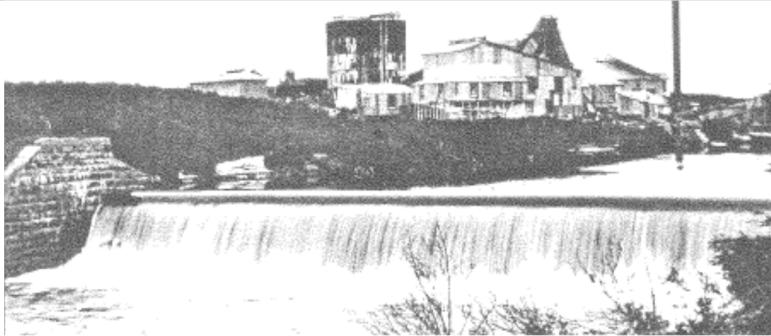


Mangakara (Masonry) Dam, Waihi

District Plan Schedule
Number: **HAU258**
Heritage Category: **A**



Location: Ohinemuri River, near the confluence with the Waitete Stream.

Heritage Status:

Historic Places Trust Registration Number: 7670 (3/6/2006)

Historic Places Trust Category:

HDC Heritage Category: **A** – Heritage Feature. National or Outstanding Regional Significance.

Other: Recorded archaeological site (T13/304)

Physical Description: A masonry dam across the Ohinemuri River.

Other known names:

Notable features:

Style:

Materials: River stone, cement

Date of Construction: 1897

History: Supplied the Victoria Battery (1896) and as such was probably still in use until 1952. The dam and associated water race were constructed by the Waihi Gold Mining Company in 1897 to provide water power at the Victoria Battery at Waikino, some 6.5km downstream. They were one of three separate systems (the others were on the Waitekauri River and the Taiari Creek) used to power the battery.

The Ohinemuri water race was the principal low pressure water system utilized at the mill. The dam diverted water into the race which was a 12ft wide and 4½ feet deep ground channel. The water was used to drive the 200 head stamper battery. Power demand immediately exceeded the hydropower supply and it was supplemented by steam (1900), then gas engines (1907) and finally hydro-electric power from the company's Horahora scheme by 1912.

Architect:

Designer:

Builder:

Heritage Type:

- Wahi Tapu
- Cultural Landscape
- Building
- Group of Buildings
- Structure
- Monument
- Historic Place
- Archaeological Site
- Other

Date Period:

1881-1910

Significance:

- Archaeological
- Architectural
- Cultural
- Historic
- Scientific
- Technological

Thematic Context

- Maori
- Early Settlement
- Industry
- Extraction
- Forestry
- Agriculture
- Transport
- Communication
- Commerce
- Residential
- Social/Cultural
- Civic
- Health

Historic Heritage Inventory



Mangakara (Masonry) Dam, Waihi

District Plan Schedule
Number: **HAU258**
Heritage Category: A

Engineer:

History of changes:

Condition: Good.

Integrity: Intact

Current Uses:

Former Uses: Dam for water race. Waihi Gold Mining Company

Registered owner:

Legal Description: River by Madgwick farm

Reference Source: E Lens for further information

Associated Pictures:

- Educational
- Church/yard
- Other