

Waitekauri Heritage Area



Location: 1-3 and 6 are based around 2756867E and 6423969N. 4-5 are 2756263E and 6421150N (Youngman farm). Waitekauri

Heritage Status

Historic Places Trust Registration Number:

Historic Places Trust Category:

HDC Heritage Category: **B** - Heritage Area. Regional or Sub-Regional Significance

Other:

Physical Description: There are few remnants of the mining settlement of Waitekauri that existed from 1880s to 1920s. The land is now principally farmland.

There are a number of remnant structures associated with the early mining in the area. These include:

1. Waitekauri (Battery) Dam: two large upright logs and long bolts, various other timbers. No timber in streambed. Water race followed road down for a little way then becomes clearly visible on hillside.
2. Water race to Waitekauri battery: Open ground channel intact in part, covered in others. Linked dam to battery.
3. Junction Stream Dam: Close to Waitekauri (Battery) dam, this fed into the water race (2).
4. Waitekauri Dam: Substantial remains of a dam operating until the 1950s. Timber in river, intact planking, concrete end structure and wing of dam well above present water level on true right bank. Extant water

District Plan Schedule

Number: **HAU268**

Heritage Category: **B**

Heritage Type:

- Wahi Tapu
- Cultural Landscape
- Building
- Group of Buildings
- Structure
- Monument
- Historic Place
- Archaeological Site
- Other

Date Period:

1881-1910

Significance:

- Archaeological
- Architectural
- Cultural
- Historic
- Scientific
- Technological

Thematic Context

- Maori
- Early Settlement
- Industry (mining)
- Extraction
- Forestry
- Agriculture
- Transport
- Communication
- Commerce
- Residential
- Social/Cultural
- Civic
- Health
- Educational
- Church/yard
- Other

Historic Heritage Inventory



Waitekauri Heritage Area

District Plan Schedule

Number: **HAU268**

Heritage Category: **B**

race in association. Water from Stony Creek and Mangakara was fed into this dam and race system, of which pipes, control gates, tunnels (2756067E 6419090N) and concrete structures which (still visible) led to Waikino to supply the high pressure race of the Victoria Battery.

5. Stony Creek Dam: Bed-log and planking visible in stream, water race of varying visibility. In-ground water race evident on true right bank.
6. Tramway, between Waitekauri and Golden Cross.

Other known names:

Notable features:

Style:

Materials: Timber, concrete, metal

Date of Construction: Date not yet determined

History: There had been mining activity in the Ohinemuri township of Waitekauri since the 1870's. In 1875, the Waitekauri Company mine was formed to develop a strong reef that had been discovered on the claim. Mr E.M. Corbett established his 40-stamp battery in the valley, close to the Grace Darling and Jubilee Streams. Early results were encouraging but the recovery rates from the ore were poor and the company folded in 1880. The mine and plant were bought by Brown and Bleazard and let out in parts on tribute. In 1890, the mine and battery were purchased by T.H. Russell, who at once put the underground workings into repair and overhauled the battery. In 1894, the London based Waitekauri Gold-Mining Company took over the claim as well as that of Golden Cross in the Upper Waitekauri Valley and Te Ao Marama in Komata. The company carried out extensive development work and a mining shanty town quickly established itself around the battery. By 1900, the town had a 30-room Boarding House (Gordon's Boarding House), 2 Hotels (including the Golden Cross, later moved to Waihi), 3 Churches, a Post Office, Doctor, Chemist, Fire Brigade, Public Hall (moved to Waihi), a Newspaper, 2 Lodges and a Jockey Club. There was also a school which had a roll of 140 pupils. At its height, it was estimated that there were 2500 people living at Waitekauri.

By the beginning of the twentieth century the "boom" was coming to a close and most of the population, along with many of the buildings, moved away from Waitekauri. Active mining operations ceased in 1905, although the newly formed New Waitekauri Gold Mining Company continued unsuccessfully until 1912.

Today there is little on the landscape to mark the mining operations or settlement of the Waitekauri Valley. The mine manager's house remains (Youngman Homestead) as well as a number of remnant structures on the water ways:

1-3: These supplied Waitekauri Battery.

4: This supplied the Victoria Battery, 1896. When the water system reached the bottom of Poland Street, it entered a pressure pipe which was accommodated in

Historic Heritage Inventory



Waitekauri Heritage Area

District Plan Schedule

Number: **HAU268**

Heritage Category: **B**

a groove cut into the steep bank. From here it flowed under the road and then under the bridge, to the battery.

5: This fed extra water into the main Waitekauri Dam to supply to Victoria Battery by capturing water that would otherwise have entered the stream below the dam.

6: This was built by T H Russell to bring ore from Golden Cross mine to his battery at Waitekauri.

Today there are extensive remains buried in the bush. 10 Ore roasting kilns have been buried but not destroyed. They can still be clearly seen as the infilling settles. The airshafts into the tunnels below are also well preserved. Remains in the valley are documented in *Coromandel Gold*, by N Ritchie and Phil Moore, Dunmore Press 1996

Architect:

Designer:

Builder:

Engineer:

History of changes:

Condition:

Integrity:

Current Uses:

Former Uses: 1-3 Waitekauri Gold Company?

4-5. Waihi Gold Mining Company

Registered owner: 1. River/road reserve? 2. Various 4-5. V&P Youngman

Legal Description:

Reference Source: Downey, J.F.(1935) *Gold-mines of the Hauraki District*. Cadstonbury Press, Christchurch; Victoria Hall Association (2005) *Waikino – Beside the Ohinemuri River*, Also see Eric Lens for further information.

Historic Heritage Inventory

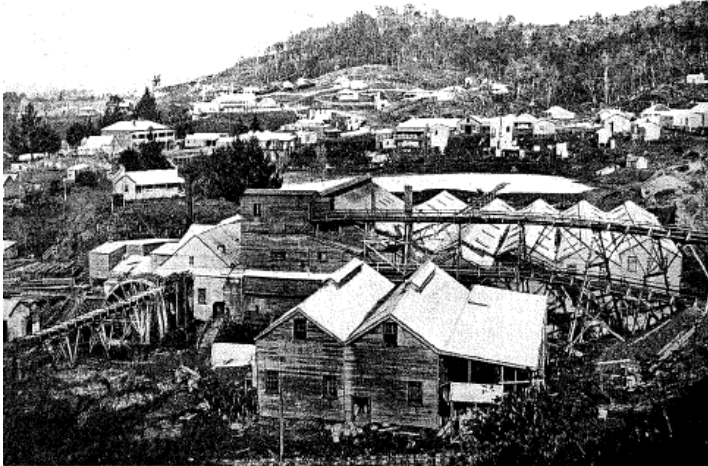
Waitekauri Heritage Area

District Plan Schedule

Number: **HAU268**

Heritage Category: B

Associated Pictures:



CHUTE OF ONE OF THE WAITEKAURI ORE ROASTING KILNS

Historic Heritage Inventory



Waitekauri Heritage Area

District Plan Schedule

Number: **HAU268**

Heritage Category: **B**



Kiln tunnels