

# Historic Heritage Inventory

## Waihi Railway Station Sheds (WW570, WW390, Gent's Toilets and Goods Shed)



**Location:** Maddocks St/ Wrigley St, Waihi

### Heritage Status

**Historic Places Trust Registration Number:** 4665

**Historic Places Trust Category:** Category 2 - Registered Historic Place

**HDC Heritage Category:** B - Heritage Feature. National or Outstanding Regional Significance

**Other:**

**Physical Description:** Two Workingmen's Accommodation Huts for singlemen located adjacent to the railway station. Two Gent's Toilets constructed of rusticated weatherboard and corrugated iron with steeply pitched shed roofs. A Goods Shed constructed of rusticated weatherboard and corrugated iron using a standard design 'through road' 30x60ft with a raised platform.

**Other known names:**

**Notable features:** Singlemen's Huts have arched roofs and casement windows. The Good's shed has a large sliding entry door at each gable end and tracks running through the station side of the shed and a raised platform.

**Style:** Victorian

**Materials:** Timber clad, Corrugated Iron Roofing

**District Plan Schedule**

**Number:** HAU020

**Heritage Category:** B

### **Heritage Type:**

- Wahi Tapu
- Cultural Landscape
- Building
- Group of Buildings
- Structure
- Monument
- Historic Place
- Archaeological Site
- Other

### **Date Period:**

1881-1910

### **Significance:**

- Archaeological
- Architectural
- Cultural
- Historic
- Scientific
- Technological

### **Thematic Context**

- Maori
- Early Settlement
- Industry
- Extraction
- Forestry
- Agriculture
- Transport
- Communication
- Commerce
- Residential
- Social/Cultural
- Civic
- Health
- Educational
- Church/yard
- Other

# Historic Heritage Inventory



## Waihi Railway Station Sheds (WW570, WW390, Gent's Toilets and Goods Shed)

District Plan Schedule

Number: **HAU020**

Heritage Category: **B**

**Date of Construction:** Workingmen's two man hut pre1947, one man hut post 1948, Gents Toilets 1905?, and Goods Shed 1905.

**History:** Waihi Railway Station was designed by George Troup and built by W. Hay at a total cost of £1764. The other structures adjacent to the station were probably designed by other architects that worked under George Troop. The Station was completed on 3 October 1905 in time for the official opening of the line between Paeroa and Waihi on November 8th 1905. The first station-master was Mr W J Hessell.

Timetables for 1912 show four mixed (goods and passenger) trains and two goods trains running between Paeroa and Waihi daily. Coal was an early important traffic (the Waikino Battery used approximately 125 tons daily).

Between 1905 and 1928 Waihi station was the railhead until the line was extended to Tauranga.

The line and station were closed in 1978.

The line between Waihi and Waikino and the station buildings are now owned and operated by the Goldfields Steam Train Society.

**Architect:** Government Architect

**Designer:**

**Builder:**

**Engineer:**

**History of changes:**

**Condition:** Good

**Integrity:** substantially intact

**Current Uses:** Part of Railway Historic Area

**Former Uses:** Goods Sheds, toilets and accommodation

**Registered owner:** Goldfields Steam Train Society

**Legal Description:** Sec 392 Pt Sec 393 Waihi Town

**Reference Source:** Mackay, Jamie 1994 Waihi Railway Station Historic Area Report, NZ Historic Places Trust.

# Historic Heritage Inventory

## Waihi Railway Station Sheds (WW570, WW390, Gent's Toilets and Goods Shed)

District Plan Schedule

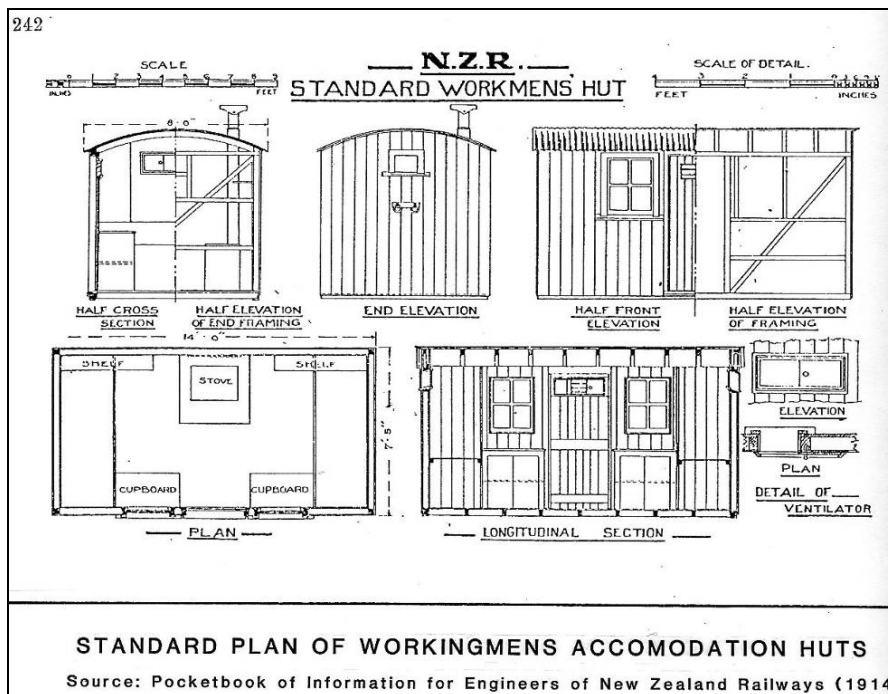
Number: **HAU020**

Heritage Category: B

Associated Pictures:



Singlemen's Huts



# Historic Heritage Inventory

## Waihi Railway Station Sheds (WW570, WW390, Gent's Toilets and Goods Shed)

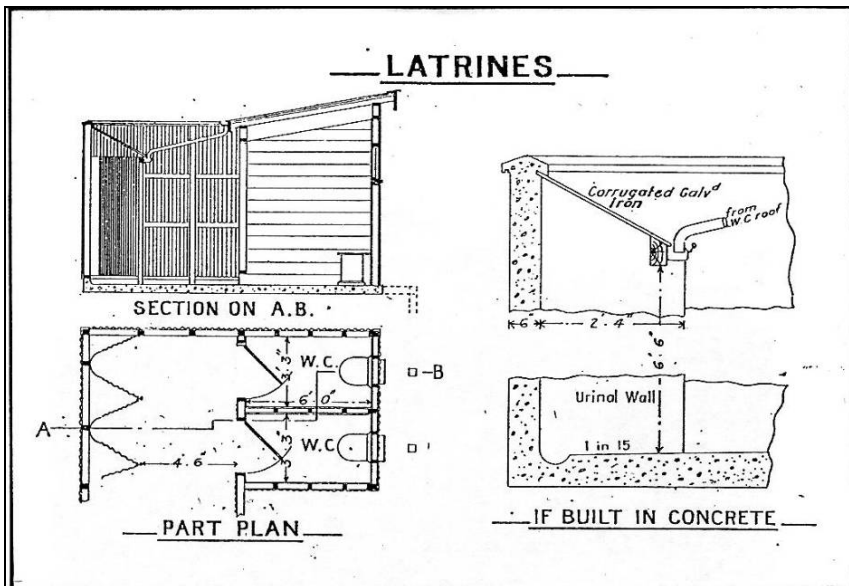
District Plan Schedule

Number: **HAU020**

Heritage Category: B



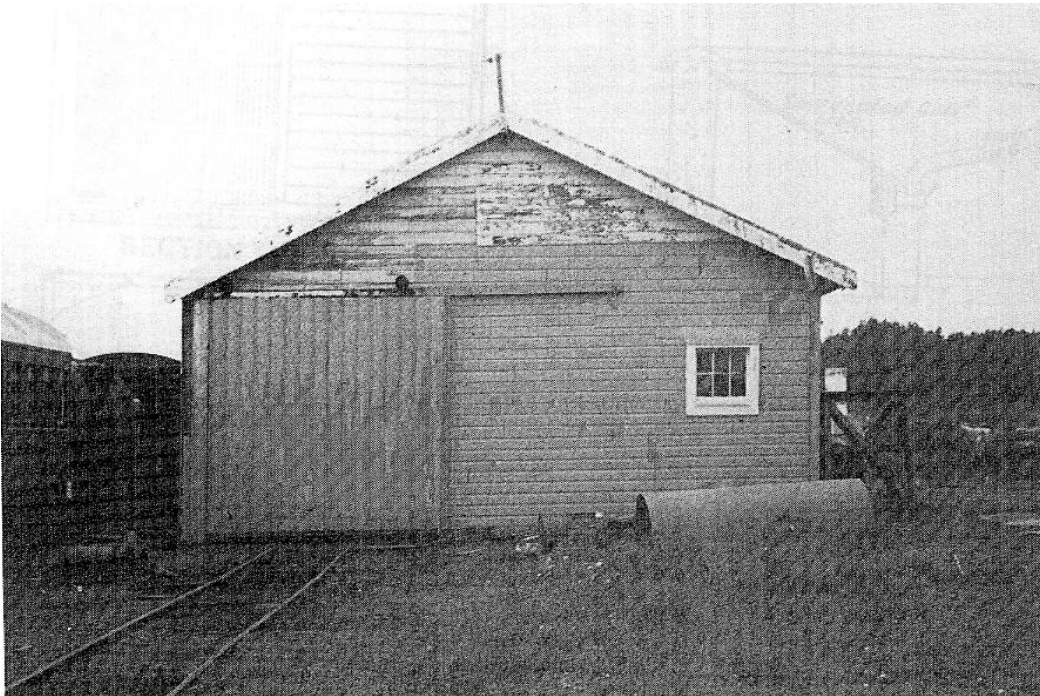
Gents Toilets



### STANDARD PLAN OF GENTS URINALS

Source : Pocketbook of Information for Engineers  
of New Zealand Railways 1914

# *Historic Heritage Inventory*



**Goods Shed 1993 (MacKay 1994:31)**