

Historic Heritage Inventory

Kerepehi School



Location: McGowan Avenue, Kerepehi

Heritage Status

Historic Places Trust Registration Number:

Historic Places Trust Category:

HDC Heritage Category: C - Heritage Item. Local or Neighbourhood

Significance

Other:

Physical Description: Open plan school still in use. School buildings include modern prefabs as well as old school buildings from Taniwha and Kaihere.

Other known names:

Notable features:

Style:

Materials: Timber, corrugated iron

Date of Construction: c.1902

History: Originally a Maori School, established in 1901 on three acres. The school building was completed on 23 November 1901. It opened on 20th March 1902 with an attendance of 17 children. The first teacher was John Hope. On August 12th 1912, the school assumed the status of a public school following

District Plan Schedule

Number: HAU152

Heritage Category: C

Heritage Type:

- Wahi Tapu
- Cultural Landscape
- Building
- Group of Buildings
- Structure
- Monument
- Historic Place
- Archaeological Site
- Other

Date Period:

1881-1910

Significance:

- Archaeological
- Architectural
- Cultural
- Historic
- Scientific
- Technological

Thematic Context

- Maori
- Early Settlement
- Industry
- Extraction
- Forestry
- Agriculture
- Transport
- Communication
- Commerce
- Residential
- Social/Cultural
- Civic
- Health
- Educational
- Church/yard
- Other

Historic Heritage Inventory



Kerepehi School

District Plan Schedule

Number: **HAU152**

Heritage Category: **C**

European settlement in the region. A second classroom was added in 1924 and a third was built in 1929. A flagpole was erected in 1936 and a swimming pool was built in 1939. The roll increased during the early 1940s and approval was given in 1946 to shift an old single classroom from Kaihere School. The building was again relocated in 1971 and is now used as the Senior Class Room. A dental clinic was also erected in 1949. Two more classrooms were added in 1955. The 1902 school building was removed in 1969 and replaced with one from Taniwha. It was then converted into a school library, one of the earliest school libraries in the district. The roof was replaced with a lower pitched one, on which are inscribed the names of construction workers. It is now used as the Music suite.

Architect:

Designer:

Builder:

Engineer:

History of changes:

Condition: Good

Integrity: Substantially intact

Current Uses: School

Former Uses:

Registered owner: Ministry of Education

Legal Description: Pt Tiritiri; Lot 12 and 21 DP 18541

Reference Source: *Kerepehi School and District Reunion 100 Years Celebrations* (2002)

Historic Heritage Inventory



Kerepehi School

District Plan Schedule

Number: **HAU152**

Heritage Category: C

Associated Pictures:



Transplanted and much modified Kaihere school house with lean to attached to side and part of heavily modified original 1902 school attached at left.



Dental Clinic at Kerepehi School

Historic Heritage Inventory

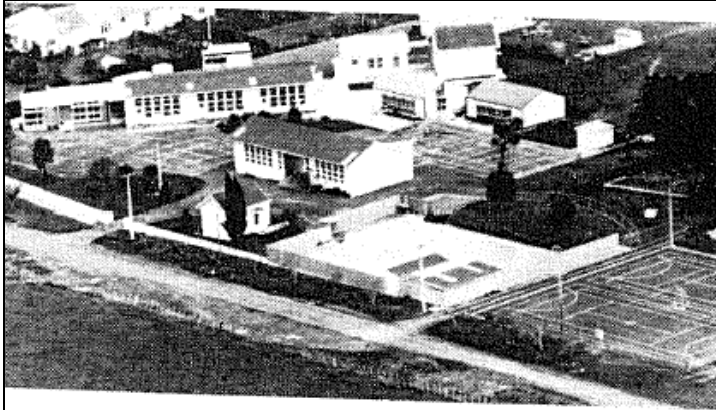


Kerepehi School

District Plan Schedule

Number: **HAU152**

Heritage Category: C



Kerepehi School 1973.

