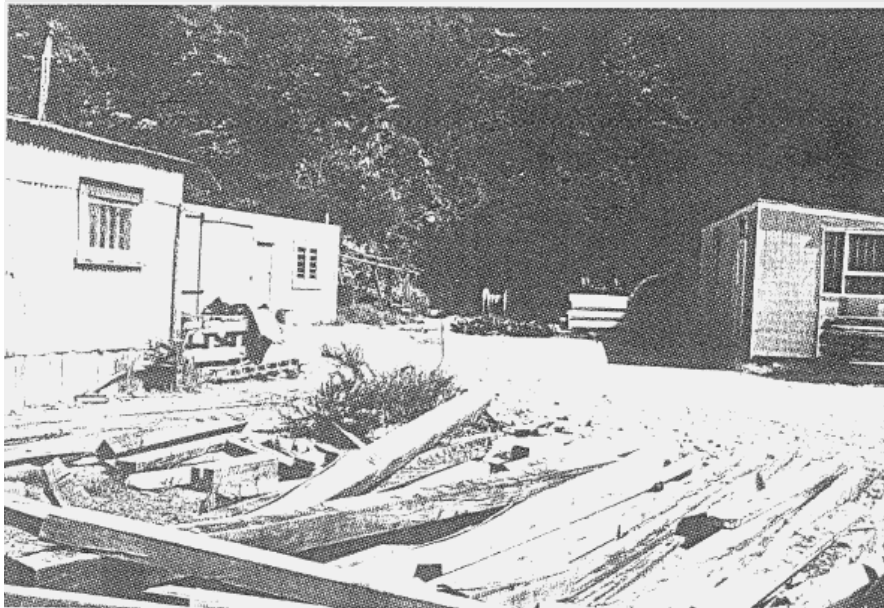


## Talisman Mine No.8 Level, Karangahake



**Location:** Karangahake Walkway, up Karangahake Hill Road about 300 metres to where the road forks.

### Heritage Status

**Historic Places Trust Registration Number:**

**Historic Places Trust Category:**

**HDC Heritage Category:** **B** - Heritage Feature. Regional or Sub-Regional Significance

**Other:**

**Physical Description:** The No.8 level adit is located in a steep narrow gully on the north side of Mt Karangahake. Three adits were driven into the side of the mountain from a work area created by levelling mullock from the mine. The layout of buildings and skip lines is much the same as it was in 1905 (see photo, picture taken in 1988, from Ritchie 1990).

**Other known names:**

**Notable features:**

**Style:**

**Materials:**

**Date of Construction:**

**District Plan Schedule**

**Number:** HAU241

**Heritage Category:** C

**Heritage Type:**

- Wahi Tapu
- Cultural Landscape
- Building
- Group of Buildings
- Structure
- Monument
- Historic Place
- Archaeological Site
- Other

**Date Period:**

1880-1910

**Significance:**

- Archaeological
- Architectural
- Cultural
- Historic
- Scientific
- Technological

**Thematic Context**

- Maori
- Early Settlement
- Industry
- Extraction
- Forestry
- Agriculture
- Transport
- Communication
- Commerce
- Residential
- Social/Cultural
- Civic
- Health
- Educational
- Church/yard
- Other

# Historic Heritage Inventory



## Talisman Mine No.8 Level, Karangahake

District Plan Schedule

Number: **HAU241**

Heritage Category: **C**

**History:** The original Talisman claim comprised of 30 acres of ground through which a short rich reef was traced. In 1894, 280 tons of quartz was extracted and processed through the NZ Crown mines plant. The results of this induced the proprietors to erect a 10 stamp battery with a cyanide plant similar to that erected by the neighbouring Woodstock Company. The mill was defective and little ore was crushed. In 1895-6, the claims of both the Woodstock and Talisman were taken over by the NZ Talisman Gold Mining Company who remodelled and expanded the original plant. In 1897, the company amalgamated with the Talisman Extended Co. to form Talisman Consolidated Ltd.

Talisman Consolidated Ltd erected a new mill of 50 stampers and commenced crushing from 1901 with great success. The mine reached a peak in 1914, just as the Crown mine was winding up. By 1918, however, the reef was practically exhausted and the company finally wound up in 1920.

The mine inside the mountain was worked from fourteen levels and several intermediate levels. The ore was derived from the Talisman and Bonanza sections of the Maria reef. Access to the Talisman, Bonanza and Dubbo sections of the mine was by adit levels. An inclined shaft was sunk at the No. 8 level by the old Talisman Company. Ore was hoisted by air-winch to storage hoppers at the top of the shaft, from where they were trucked by contractors' horses to the top station of the aerial cableway which conveyed it down to the battery.

**Architect:**

**Designer:**

**Builder:**

**Engineer:**

**History of changes:**

**Condition:** ruin

**Integrity:** substantially altered

**Current Uses:** Part of Historic Walkway

**Former Uses:** Mine

**Registered owner:** Department of Conservation; Cyprus Minerals Ltd

**Legal Description:**

**Reference Source:** E. Lens (pers. comm.); Ritchie, N. (1990) *A Survey of Historic Mining Sites in the Thames and Ohinemuri Areas of the Hauraki Goldfield*. Department of Conservation.

# Historic Heritage Inventory

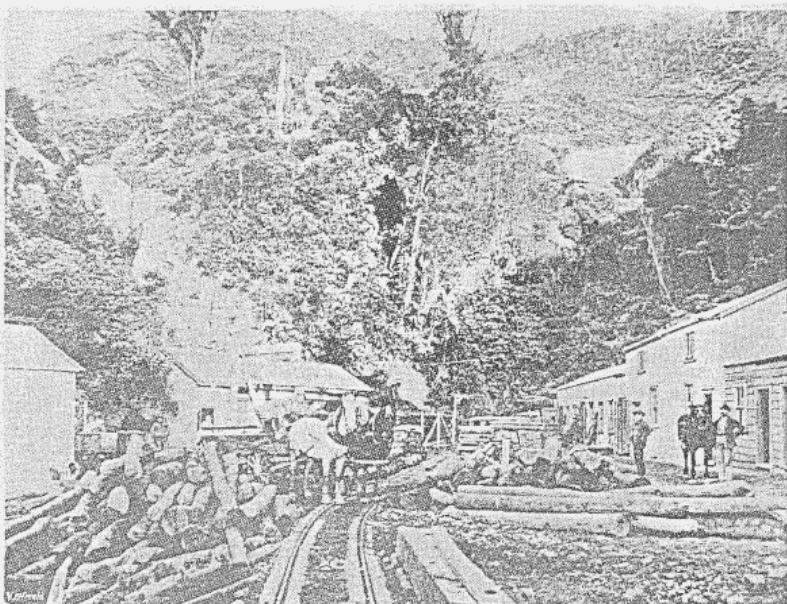
## Talisman Mine No.8 Level, Karangahake

District Plan Schedule

Number: **HAU241**

Heritage Category: C

### Associated Pictures:



T13/287. The Talisman #8 Level- the main entrance to the mine  
Source: Auckland Weekly News Xmas 1905  
Auckland Institute & Museum (C10,830).