

Waihi Gold Mining Company – Tramways



“Ohinemuri” and rake of full trucks at No.1 Shaft Hoppers, Martha Hill, 1900. DoC/WACMA - Photo Courtesy E Lens.

Location: 1. Martha to Victoria Battery (includes Black Bridge site and ECMT railway underpass). 2. Martha to Silverton / Union Battery.

Heritage Status

Historic Places Trust Registration Number:

Historic Places Trust Category:

HDC Heritage Category: **C** - Heritage Item. Local or Neighbourhood Significance

Other:

Physical Description: Ore tramways, the latter being covered by houses

Other known names: Narrow gauge line

Notable features:

Style:

Materials:

Date of Construction: 1896

District Plan Schedule

Number: **HAU264**

Heritage Category: **C**

Heritage Type:

- Wahi Tapu
- Cultural Landscape
- Building
- Group of Buildings
- Structure
- Monument
- Historic Place
- Archaeological Site
- Other

Date Period:

1881-1910

Significance:

- Archaeological
- Architectural
- Cultural
- Historic
- Scientific
- Technological

Thematic Context

- Maori
- Early Settlement
- Industry
- Extraction
- Forestry
- Agriculture
- Transport
- Communication
- Commerce
- Residential
- Social/Cultural
- Civic
- Health
- Educational
- Church/yard
- Other

Historic Heritage Inventory



Waihi Gold Mining Company – Tramways

District Plan Schedule

Number: **HAU264**

Heritage Category: **C**

History: “The Martha Mine to Victoria Battery tramway, known locally as “the rake”... dates from 1896, and was a vital component of the operations of the Waihi Gold Mining Company (and Martha Goldmining Company Ltd. as it became in 1935).

This small gauge railway (2ft 9in.) was constructed to connect the mine with the new Victoria Battery at Waikino, a distance of five and three quarter miles (9km). It crossed the Ohinemuri River just upstream from the Masonry dam on a bridge known as “Black Bridge”. The tramway is closely associated with the low level Ohinemuri water race, crossing over it once, and under it twice. Two substantial cuttings were required, one clearly showing the water race crossing the tramway.

The tramway alignment remained virtually unchanged for over 55 years. From No. 1, 2, 4, 6 and 7 shafts on Martha Hill it passed close to the No.5 Shaft and Pumphouse, through the town of Waihi, crossed the Ohinemuri River near the confluence with the Waitete Stream, making its way to the Victoria Battery at Waikino. Branch lines extended to No.3 Shaft on Moresby Avenue, to Union Hill (where the Refinery operated until the close of the mine), the Union Battery on the Ohinemuri River (closed 1911), and a network of interconnecting lines on Martha Hill. The line was lowered over a small section to allow the East Coast Main Trunk Railway to pass over it at the eastern end of the Mangatoetoe Bridge.

A total of six steam locomotives had been in service over the life of the tramway. In order of acquisition they were: Ohinemuri, Victoria, Albert, Waikino, Dominion, and Empire” (Lens, 2006).

Architect:

Designer:

Builder:

Engineer:

History of changes:

Condition:

Integrity:

Current Uses:

Former Uses: Waihi Gold Mining Company

Registered owner:

Legal Description:

Reference Source: ‘Heritage notes on the Waihi Gold Mining Company’s Tramway to Victoria Battery, The “Rake” 1896 – 1952/54’ Eric Lens 2006

Historic Heritage Inventory

Waihi Gold Mining Company – Tramways

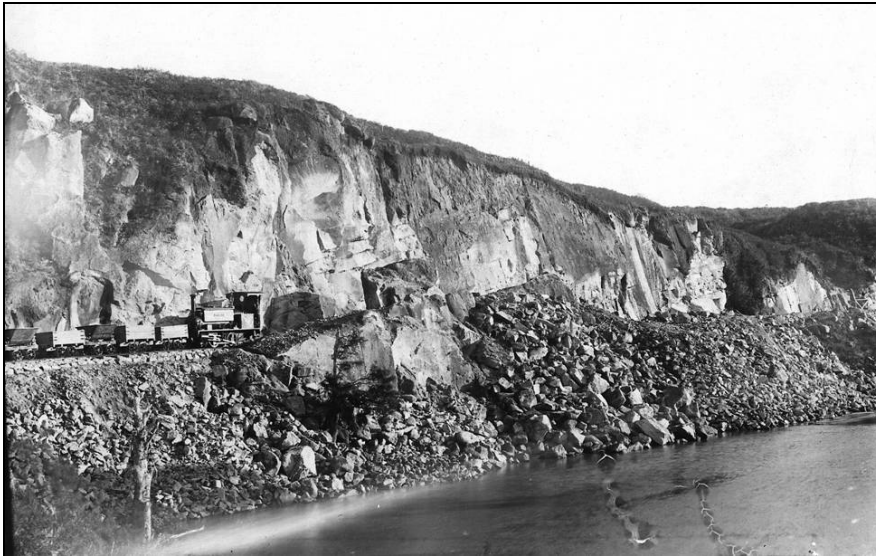
District Plan Schedule

Number: **HAU264**

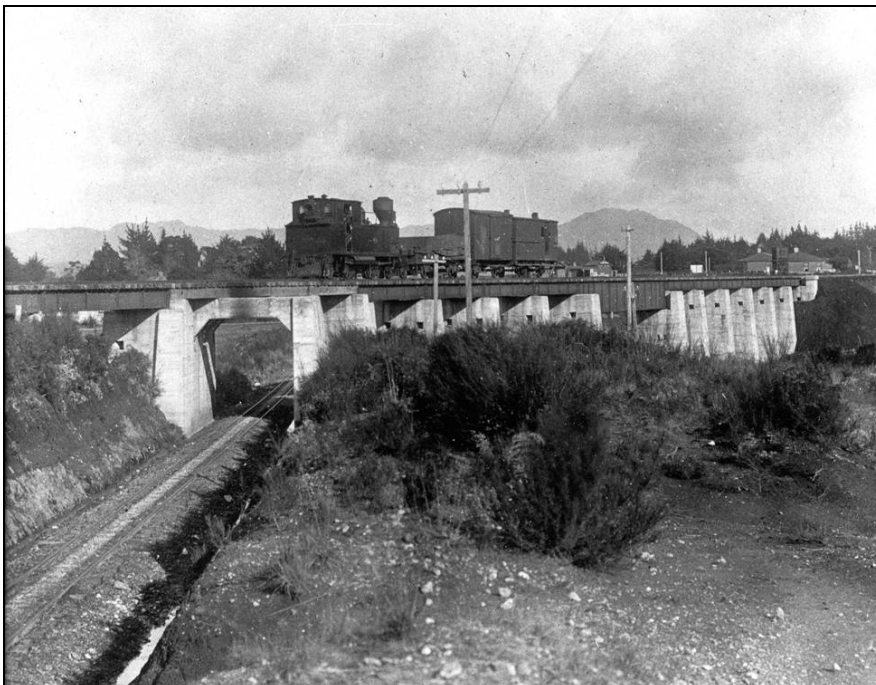
Heritage Category: C

(unpublished).

Associated Pictures: Courtesy of E Lens



Locomotive, probably "Ohinemuri", in the second largest cutting. Circa 1897. . The image was labelled: "Rail track 1.5 miles from Waikino".
HP Barry Collection photo, WACMA.



FA Loco crossing Waihi Gold Co rake line on the Mangatoetoe Bridge. The concrete structure at the left of picture is the rail overbridge which remains today, the rest of the pylons are gone. Mount Karangahake in right background. C.1925. DoC Collection.

Historic Heritage Inventory



Waihi Gold Mining Company – Tramways

District Plan Schedule

Number: **HAU264**

Heritage Category: C



Current: Tramway formation on battery side of Black Bridge. Tramway sweeps from left to right on its way to the battery. The embankment is visible through the middle of picture. Note also two telegraph poles visible as thin black upright poles just beyond the tramway formation. 2006.



Locomotive, probably "Ohinemuri", in deep cutting, travelling toward Waikino. The water race crossing the tramway would be just out of sight around the corner behind the loco. Circa 1897. HP Barry Collection photo, WACMA.