

## 6.4 RECOGNITION AND PROTECTION OF SIGNIFICANT TREES

### 6.4.1 BACKGROUND

- (1) Individual trees and groups of trees, in addition to identified areas of indigenous vegetation, can be of significance to the community, particularly in urban areas. Their significance can arise from their historical and cultural associations, botanical value or amenity (visual) value - size, location & appearance. Often these trees will be exotic rather than indigenous.
- (2) Land in public ownership often includes well established trees and groups of trees that provide a pleasant setting for buildings and give the towns a pleasant appearance/character. Trees on private property add to the overall appearance/character of the urban environment.
- (3) In a similar way to the protection/recognition afforded to significant stands of indigenous vegetation in the rural area, Council proposes to provide protection/recognition to significant urban and rural trees.
- (4) A survey of the urban areas has been carried out to identify the significant trees located on public land (ie that owned by the Crown, Council and other public bodies).
- (5) This is seen as a starting point for the schedule of significant trees which is expected to grow over time as individuals seek to provide a similar level of protection/recognition for trees on their own private property. Trees on private land will only be added to the schedule at the request of the land owner. A number already appear on the schedule through this mechanism.

### 6.4.2 RESOURCE MANAGEMENT ISSUES

- (1) The retention of trees is desirable because of the contribution they make to the amenities of urban areas in particular, their historical associations and their botanical values. Subdivision and urban intensification lead to increased pressure for the removal of urban trees. Urban amenity values can only be retained if the trees are protected from removal.

### 6.4.3 OBJECTIVES AND POLICIES

#### (1) OBJECTIVE 1

To maintain and improve the significant trees resource for the purpose of preserving their intrinsic, historical, cultural and amenity values for the benefit and enjoyment of future generations.

#### (a) Policies

Objective 1 will be achieved by the implementation of the following policies:

- (i) Protect significant trees from the adverse effects of development.
- (ii) Encourage developments that retain significant trees.

- (iii) Promote greater public awareness of and support for the protection of significant trees.
- (iv) Giving public recognition to those people who have volunteered their trees for protection.
- (v) Require all additions to or removals from the schedule to be through the District Plan Change procedure to ensure that the rights of private property owners can be considered in relation to the overall desires of the community.

**(b) Reasons**

- (i) To ensure adequate protection is afforded to those urban and rural trees identified as having significance, a combination of regulatory measures through the District Plan and voluntary techniques is considered by Council to offer the best solution. Statutory provisions alone cannot ensure the protection of trees. The co-operation of affected landowners and the general public is essential to achieving the preservation of individual trees and groups of trees.
- (ii) The District Plan is a suitable public document to help raise public awareness of the existence of significant trees.
- (iii) Ensuring information is readily available on identified trees helps increase landowner and general public understanding and support for the preservation measures proposed.

## 6.4.4 ENVIRONMENTAL RESULTS

- (1) Urban and rural amenity values protected through the retention of significant urban and rural trees.
- (2) Increased public awareness of the value of significant trees and the responsibility of landowners in their protection.

## 6.4.5 ACTIVITIES

Any resource consent applications required under Rule 6.4.5 shall be exempt from Resource Consent Application processing fees.

### 6.4.5.1 PERMITTED ACTIVITIES

- (1) The following are *Permitted Activities*:
  - (a) Trimming or pruning of any tree listed in the Schedule of Significant Trees necessary because of disease or age and which will not result in the death, destruction or irreparable damage to the tree.
  - (b) Minor pruning or shaping necessary to maintain or enhance the value of the tree listed in the Schedule of Significant Trees.

- (c) Removal of any tree listed in the Schedule of Significant Trees if the *Council* has confirmed the tree is dead.
- (d) Construction or alteration of a *structure*, excavation, filling or formation of new impermeable surfaces near any tree listed in the Schedule of Significant Trees if:
  - (i) it does not occur within the area covered by the *drip-line* of the tree(s) (irrespective of any legal boundary, fence or *structure*).
- (e) Removal or destruction (partial or total) of any tree listed in the Schedule of Significant Trees for emergency purposes to:
  - (i) safeguard human life or habitable *buildings* from immediate danger (as confirmed by a qualified arborist); or
  - (ii) to maintain or restore *network utilities* including transport (as confirmed by the relevant utility provider or other suitably qualified engineer).

#### 6.4.5.2 CONTROLLED ACTIVITIES

- (1) There are no *Controlled Activities*.

#### 6.4.5.3 RESTRICTED DISCRETIONARY ACTIVITIES

- (1) There are no *Restricted Discretionary Activities*.

#### 6.4.5.4 DISCRETIONARY ACTIVITIES

- (1) The following are *Discretionary Activities* and shall be assessed in relation to the criteria specified in Rule 6.4.5.7 below:
  - (a) Any activity not provided for as a *Permitted Activity*.

#### 6.4.5.5 NON COMPLYING ACTIVITIES

- (1) There are no *Non Complying activities*.

#### 6.4.5.6 PROHIBITED ACTIVITIES

- (1) There are no *Prohibited Activities*.

#### 6.4.5.7 ASSESSMENT CRITERIA FOR DISCRETIONARY ACTIVITIES

- (1) The following criteria will be used to assess any application for a *Discretionary Activity*:
  - (a) The reasons for inclusion of the tree in the Schedule of Significant Trees;
  - (b) The degree of modification or damage that will be caused to the tree and its effect on the value of the tree;

- (c) The extent to which the work will:
  - (i) enhance or reduce the overall value of the tree in relation to the significance factor for which it was listed; and/or
  - (ii) enhance or reduce the value of other protected trees in the group or vicinity.
- (d) The extent to which the tree constitutes or is likely to become a hazard.
- (e) The extent to which the tree has grown to the point of causing nuisance, including any significant loss of sunlight or leaf drop, to nearby residents, and whether minor trimming or pruning will not or has not ameliorated the problem.
- (f) Whether the tree is causing or is likely to cause structural damage to infrastructure including *roads, structures or buildings*.
- (g) Whether there are any alternatives to the development proposed that would avoid the need for the work to be done on the tree or the tree's removal.
- (h) The financial consequences to the owner and/or occupier of the *site* of not authorising the work to be carried out and the nature of any associated relief that may be available.

### 6.4.6 SCHEDULE OF SIGNIFICANT TREES

Tree ID Number	Map No.	Description	Location	Botanical Name	Significance Factor
TR001	B	One Oak tree	9 Matai Street, Turua	<i>Quercus robur</i>	Historical/Cultural, Visual Amenity
TR002	C	One Oak tree	8 Orchard West Road, Ngatea - Hauraki Plains College	<i>Quercus robur</i>	Historical/Cultural
TR003	C	One Tulip tree	52 Orchard West Road, Ngatea - Ngatea Primary School	<i>Liriodendron tulipifera</i>	Historical/Cultural, Visual Amenity
TR004	C	One Oak tree	Road Reserve at corner of Paul Drive and Orchard West Road, Ngatea	<i>Quercus palustris</i>	Visual Amenity
TR005	C	Row of Five London Plane trees	Ngatea Domain, Orchard West Road, Ngatea	<i>Platanus x hispanica</i>	Visual Amenity
TR006	C	One Redwood tree	Ngatea Domain, Orchard West Road, Ngatea	<i>Sequoia sempervirens</i>	Visual Amenity, Historical/Cultural
TR007	E	Grove of Forty two Pohutukawa trees and One Cabbage tree	Fishermans Bend, Whiritoa -Pohutukawa Reserve	<i>Metrosideros excelsa</i> , <i>Cordyline australis</i>	Historical/Cultural, Visual Amenity, Botanical Value
TR008	G3, G7	Fourteen Palm trees	Railway Reserve adjacent to Belmont Road, Paeroa	<i>Phoenix canariensis</i>	Historical/Cultural, Visual Amenity
TR009	G3	One Palm tree	Road Reserve, Miller Avenue, Paeroa	<i>Phoenix canariensis</i>	Visual Amenity
TR010	G3	Three Deodar Cedar trees	Road Reserve, Kennedy Street, Paeroa	<i>Cedrus deodara</i>	Visual Amenity
TR011	G4	One Totara tree	32 Hill Street, Paeroa	<i>Podocarpus totara</i>	Visual Amenity, Botanical Value
TR012	G6	One Palm tree	State Highway 26, Rotokohu Sports Ground, Paeroa	<i>Phoenix canariensis</i>	Visual Amenity
TR013	G3, G5, G6, G7	Row of London Plane trees and Oak trees	Road Reserve, Paeroa	<i>Platanus x hispanica</i> , <i>Quercus robur</i>	Visual Amenity
TR014	G4, G7	Two Camphor Laurel trees	Primrose Hill (Arney Street, Paeroa)	<i>Cinnamomum camphora</i>	Botanical Value, Visual Amenity
TR015	G4, G7	Three Liquidambar trees	Primrose Hill (Arney Street, Paeroa)	<i>Liquidambar styraciflua</i>	Botanical Value, Visual Amenity
TR016	G4, G7	One Oak tree	Road Reserve, Wood Street, (Primrose Hill) Paeroa	<i>Quercus palustris</i>	Visual Amenity
TR019	G4, G7	One Oak tree	Primrose Hill, Paeroa	<i>Quercus robur</i>	Visual Amenity
TR020	G4, G7	One Eucalyptus tree	Primrose Hill, Paeroa	<i>Eucalyptus</i>	Visual Amenity

Tree ID Number	Map No.	Description	Location	Botanical Name	Significance Factor
TR021	G4, G7	Grove of fifty two Podocarps	Primrose Hill, Paeroa	<i>Podocarpus totara</i> , <i>Phyllocladus trichomanoides</i> , <i>Dacrycarpus dacrydioides</i> , <i>Prumnopitys ferruginea</i>	Botanical Value, Visual Amenity
TR022	G6	One Oak tree	Road Reserve, Lewis Street, Paeroa	<i>Quercus palustris</i>	Visual Amenity
TR023	G6, G7	One Liquidambar tree	6 Wood Street, Paeroa - Paeroa Central Primary School	<i>Liquidambar styraciflua</i>	Visual Amenity
TR024	G4	One Wonder tree	Road Reserve, Shaw Avenue, Paeroa.	<i>Idesia polycarpa</i>	Botanical Value, Visual Amenity
TR027	K3	One Oak tree	Waihi College, Kensington Road, Waihi	<i>Quercus palustris</i>	Visual Amenity
TR028	K3, K7	One Kauri tree	Martha Hill, Waihi	<i>Agathis australis</i>	Botanical Value, Visual Amenity
TR029	K4, K7	One Rhododendron tree	Martha Hill, Waihi	<i>Rhododendron</i>	Visual Amenity, Historical/Cultural
TR030	K4, K7	Five Liquidambar trees and One Oak tree	Martha Hill, Waihi	<i>Liquidambar styraciflua</i> , <i>Quercus robur</i>	Visual Amenity
TR031	K4, K7	One Totara tree	Road Reserve, Seddon Street, Waihi	<i>Podocarpus totara</i>	Botanical Value, Visual Amenity
TR036	K4	Grouping of Native and Exotic trees	Morgan Park, Kenny Street, Waihi	<i>Agathis australis</i> , <i>Dacrydium cupressinum</i> , <i>Podocarpus totara</i> , <i>Prumnopitys ferruginea</i> , <i>Quercus robur</i> , <i>Phyllocladus toatoa</i>	Botanical Value, Visual Amenity
TR038	K4	One Oak tree	Road Reserve, Gladstone Road, Waihi	<i>Quercus robur</i>	Visual Amenity
TR039	K2	Two Tulip trees	Road Reserve, Gladstone Road, Waihi	<i>Liriodendron tulipifera</i>	Botanical Value, Visual Amenity
TR041	K3, K7	One Palm tree	Road Reserve, Seddon Street, Waihi	<i>Phoenix canariensis</i>	Visual Amenity
TR042	K3, K7	Two Palm trees	Road Reserve, Baber Street, Waihi	<i>Phoenix canariensis</i>	Visual Amenity
TR044	K3	One Elm tree	Road Reserve, Toomey Street, Waihi	<i>Ulmus procera</i>	Botanical Value, Visual Amenity
TR045	K5	Avenue of Palm trees	Road Reserve, Parry Palm Avenue & Seddon Avenue, Waihi	<i>Phoenix canariensis</i>	Visual Amenity, Historical/Cultural
TR046	K3, K5	Sixteen Oak trees	Road Reserve, Seddon Avenue, Waihi, (between Orchard Road & Toomey Street)	<i>Quercus robur</i>	Visual Amenity, Historical/Cultural
TR047	K3, K7	Eleven Tulip trees	Road Reserve (Seddon Avenue,	<i>Liriodendron tulipifera</i>	Visual Amenity, Historical/Cultural

Tree ID Number	Map No.	Description	Location	Botanical Name	Significance Factor
			between Featon Road & Martin Road), Waihi		
TR049	K6	One London Plane tree, One Cedar tree, One Macrocarpa tree	Riverbank Reserve, Waihi (between Riverbank Terrace & Wellington Street, Waihi)	<i>Platanus x hispanica</i> , <i>Cedrus deodara</i> , <i>Cupressus macrocarpa</i>	Visual Amenity
TR050	K6	One Oak tree	Gilmour Lake Reserve, Waihi	<i>Quercus robur</i>	Visual Amenity
TR052	K4	Row of Oak trees	Morgan Park, Kenny Street, Waihi	<i>Quercus robur</i> , <i>Quercus palustris</i>	Visual Amenity
TR054	C	One Oak tree	Hauraki Plains College, 8 Orchard West Road, Ngatea	<i>Quercus robur</i>	Historical/Cultural, Visual Amenity
TR055	B	One Oak tree	9 Matai Street, Turua	<i>Quercus robur</i>	Historical/Cultural, Visual Amenity
TR056	G3	One Pepper tree	Road Reserve, Kennedy Street, Paeroa	<i>Schinus molle</i>	Visual Amenity
TR057	G3	Six Totara trees	Road Reserve, Kennedy Street, Paeroa	<i>Podocarpus totara</i>	Visual Amenity, Botanical Value
TR058	K4	One Oak tree	Road Reserve, Gladstone Road, Waihi	<i>Quercus robur</i>	Visual Amenity
TR059	K4	One London Plane tree	Morgan Park, Kenny Street, Waihi	<i>Platanus x hispanica</i>	Visual Amenity
TR060	K5	Twenty Oak trees	Road Reserve, Seddon Avenue, Waihi	<i>Quercus robur</i>	Visual Amenity, Historical/Cultural
TR061	K3	One Ash tree	Waihi College, Kensington Road, Waihi	<i>Fraxinus oxycarpa</i> "Raywoodii"	Visual Amenity
TR062	K3, K7	One Oak tree	Service Lane off Kenny Street, Waihi	<i>Quercus ilex</i>	Visual Amenity, Botanical Value
TR063	K3, K7	One Palm tree	Road Reserve, Seddon Street, Waihi	<i>Phoenix canariensis</i>	Visual Amenity
TR064	K3	Row of Sixteen Oak trees	Road Reserve, Seddon Avenue, Waihi	<i>Quercus robur</i>	Visual Amenity, Historical/Cultural
TR066	K3	One Tulip tree	Waihi College, Kensington Road, Waihi	<i>Liriodendron tulipifera</i>	Visual Amenity
TR067	29	One Gallipoli Pine tree	Paeroa Golf Course, Rotokohu Road, Paeroa	<i>Pinus halepensis</i> spp. <i>brutia</i>	Historical/Cultural, Botanical Value
TR068	17	Grove of Redwood trees	529 Maratoto Road, Paeroa	<i>Sequoia sempervirens</i>	Visual Amenity
TR069	29	Row of Oak trees	Rotokohu Road & Thorp Road, Paeroa	<i>Quercus robur</i>	Visual Amenity, Historical/Cultural
TR070	23	Grove of Redwood trees	13 Hubbard Road, Paeroa	<i>Sequoia sempervirens</i>	Visual Amenity

Tree ID Number	Map No.	Description	Location	Botanical Name	Significance Factor
TR071	F1	Grove of Oak trees	Kaihere School, State Highway 27, Kaihere	<i>Quercus robur</i>	Visual Amenity, Historical/Cultural
TR073	G6	One Oak tree	Road Reserve, Lewis Street, Paeroa	<i>Quercus palustris</i>	Visual Amenity
TR075	G1	One Kauri tree	38 Taylor Avenue, Paeroa	<i>Agathis australis</i>	Visual Amenity
TR077	E	One Pohutukawa tree	55 Fishermans Bend, Whiritoa	<i>Metrosideros excelsa</i>	Visual Amenity, Botanical Value
TR078	E	One Pohutukawa tree	59 Fishermans Bend, Whiritoa	<i>Metrosideros excelsa</i>	Visual Amenity, Botanical Value
TR079	E	One Pohutukawa tree	73 Fishermans Bend, Whiritoa	<i>Metrosideros excelsa</i>	Visual Amenity, Botanical Value
TR080	E	One Pohutukawa tree	Fishermans Bend, Whiritoa	<i>Metrosideros excelsa</i>	Visual Amenity, Botanical Value
TR081	C	One Palm tree	Orchard West Road, Ngatea. Ngatea Hotel	<i>Phoenix canariensis</i>	Visual Amenity
TR082	K5, K7	Three Oak trees	Consols Street Reserve, Waihi	<i>Quercus robur</i>	Visual Amenity
TR083	K6	Grove of Seventeen Totara trees	Gilmour Lake Reserve, Waihi	<i>Podocarpus totara</i>	Visual Amenity, Botanical Value
TR084	K6	Native and Exotic trees and vegetation	Gilmour Lake Reserve, Waihi	<i>Cordyline australis, Taxodium distichum, Dacrydium dacrydioides</i>	Visual Amenity, Botanical Value
TR085	31	Twenty Oak trees	Black Hill walkway adjacent to Ohinemuri River, Waihi	<i>Quercus robur</i>	Visual Amenity
TR086	K4	One Rimu tree	10 Baker Street, Waihi	<i>Dacrydium cupressinum</i>	Visual Amenity, Botanical Value
TR087	10	One Oak tree	39 Horahia Road, Ngatea	<i>Quercus robur</i>	Visual Amenity, Historical/Cultural
TR088	H3	One Oak tree, One Rimu tree and One Kauri tree	64 Old Waitekauri Road, Waikino	<i>Quercus palustris, Dacrydium cupressinum, Agathis australis</i>	Visual Amenity, Botanical Value, Historical/Cultural
TR089	K6, K7	One Kauri tree	90 Consols Street, Waihi	<i>Agathis australis</i>	Visual Amenity, Botanical Value
TR090	G2	One Oak tree	7242 State Highway 26, Paeroa	<i>Quercus robur</i>	Visual Amenity, Historical/Cultural
TR095	K3	One Kauri tree, One Rimu tree and One Beech tree	8 Featon Road, Waihi	<i>Agathis australis, Dacrydium cupressinum, Fagus sylvatica</i>	Visual Amenity, Botanical Value, Historical/Cultural
Trees TR096 to TR123 are shown on 6.4.7 Appendix 1: Significant Trees – Paeroa Domain					
TR096		Row of Ten trees located adjacent to King Street, (excludes trees around croquet greens)	Paeroa Domain, Willoughby Street, Paeroa	<i>Acer pseudoplatanus, Fraxinus spp, Liquidambar styraciflua, Platanus x acerifolia, Pseudotsuga menziesii, Quercus spp, Taxodium distichum, Ulmus spp.</i>	Visual Amenity, Botanical Value, Historical/Cultural



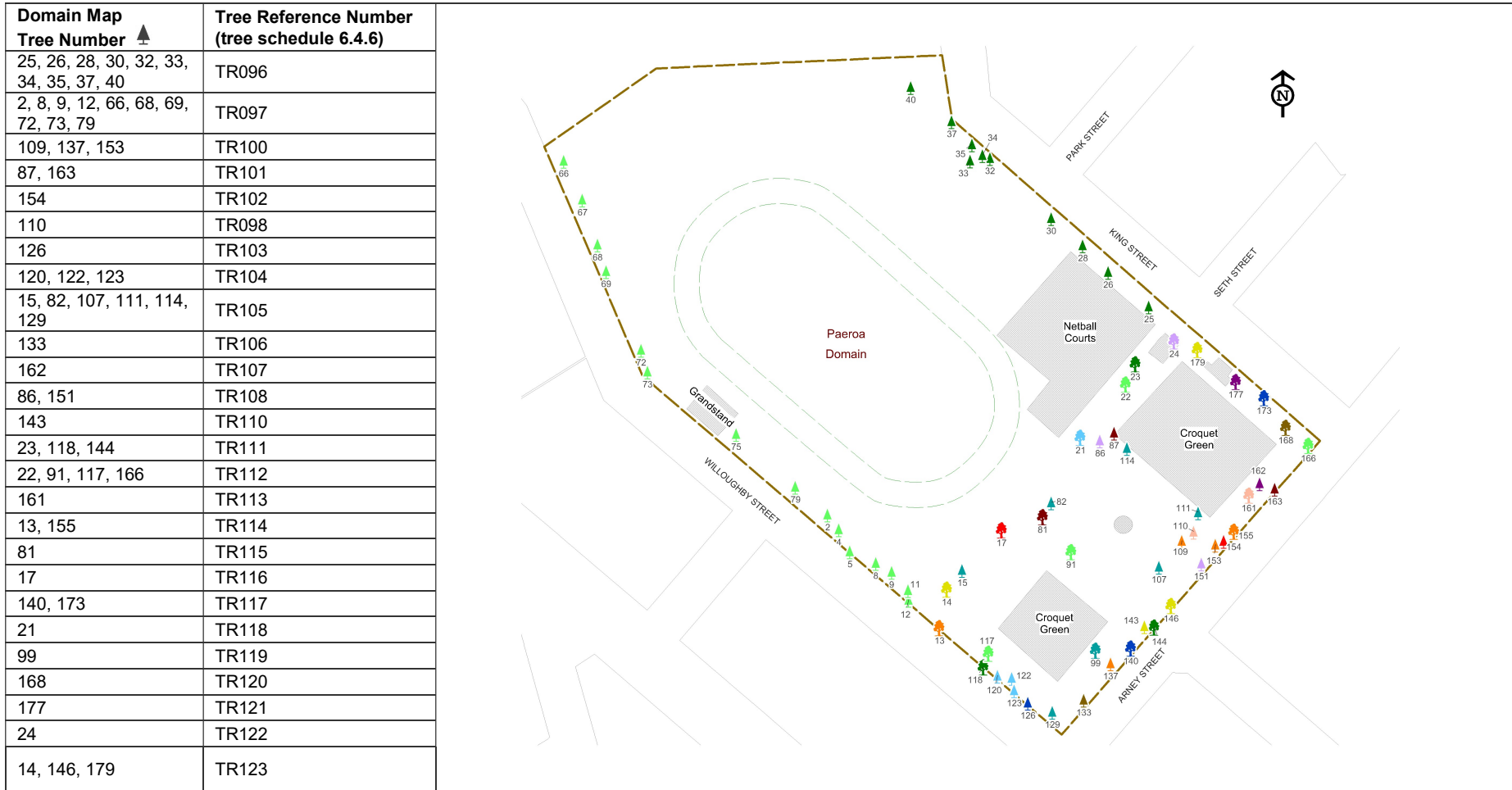
Tree ID Number	Map No.	Description	Location	Botanical Name	Significance Factor
TR097		Row of Fifteen trees located adjacent to Willoughby Street (excludes trees around croquet greens)	Paeroa Domain, Willoughby Street, Paeroa	<i>Araucaria bidwillii</i> , <i>Cedrus deodara</i> , <i>Cupressus spp.</i> , <i>Metasequoia glyptostroboides</i> , <i>Platanus x acerifolia</i> , <i>Quercus spp.</i> , <i>Tilia x europaea</i>	Visual Amenity, Botanical Value, Historical/Cultural
TR098		One Toru tree	Paeroa Domain, Willoughby Street, Paeroa	<i>Toronia toru</i>	Visual Amenity, Botanical Value, Historical/Cultural
TR100		Three Bunya Pine trees	Paeroa Domain, Willoughby Street, Paeroa	<i>Araucaria bidwillii</i>	Visual Amenity, Historical/Cultural
TR101		Two Sycamore Maple trees	Paeroa Domain, Willoughby Street, Paeroa	<i>Acer pseudoplatanus</i>	Visual Amenity, Historical/Cultural
TR102		One Horse Chestnut tree	Paeroa Domain, Willoughby Street, Paeroa	<i>Aesculus hippocastanum</i>	Visual Amenity, Historical/Cultural
TR103		One Chinese Sumac tree	Paeroa Domain, Willoughby Street, Paeroa	<i>Ailanthus altissima</i>	Visual Amenity, Historical/Cultural
TR104		Three Silver Birch trees	Paeroa Domain, Willoughby Street, Paeroa	<i>Betula pendula</i>	Visual Amenity, Historical/Cultural
TR105		Six Deodar Cedar trees	Paeroa Domain, Willoughby Street, Paeroa	<i>Cedrus deodara</i>	Visual Amenity, Historical/Cultural
TR106		One Lebanon Cedar tree	Paeroa Domain, Willoughby Street, Paeroa	<i>Cedrus libani</i>	Visual Amenity, Historical/Cultural
TR107		One Camphor Laurel tree	Paeroa Domain, Willoughby Street, Paeroa	<i>Cinnamomum camphora</i>	Visual Amenity, Historical/Cultural
TR108		Two Japanese Cedar trees	Paeroa Domain, Willoughby Street, Paeroa	<i>Cryptomeria japonica</i>	Visual Amenity, Historical/Cultural
TR110		One Copper Beech tree	Paeroa Domain, Willoughby Street, Paeroa	<i>Fagus sylvatica 'Purpurea'</i>	Visual Amenity, Historical/Cultural
TR111		Three Douglas Fir trees	Paeroa Domain, Willoughby Street, Paeroa	<i>Pseudotsuga menziesii</i>	Visual Amenity, Historical/Cultural
TR112		Four Oak trees	Paeroa Domain, Willoughby Street, Paeroa	<i>Quercus spp.</i>	Visual Amenity, Historical/Cultural
TR113		One Common Lime tree	Paeroa Domain, Willoughby Street, Paeroa	<i>Tilia x europaea</i>	Visual Amenity, Historical/Cultural
TR114		Two Cypress trees	Paeroa Domain, Willoughby Street, Paeroa	<i>Cupressus spp.</i>	Visual Amenity, Historical/Cultural
TR115		One Evergreen Magnolia tree	Paeroa Domain, Willoughby Street, Paeroa	<i>Magnolia grandiflora</i>	Visual Amenity, Historical/Cultural

Tree ID Number	Map No.	Description	Location	Botanical Name	Significance Factor
TR116		One Redwood tree	Paeroa Domain, Willoughby Street, Paeroa	<i>Sequoia sempervirens</i>	Visual Amenity
TR117		Two Tulip trees	Paeroa Domain, Willoughby Street, Paeroa	<i>Liriodendron tulipifera</i>	Visual Amenity
TR118		One Wax tree	Paeroa Domain, Willoughby Street, Paeroa	<i>Rhus succedanea</i>	Visual Amenity
TR119		One Kowhai tree	Paeroa Domain, Willoughby Street, Paeroa	<i>Sophora tetraptera</i>	Visual Amenity, Historical/Cultural, Botanical Value
TR120		One Silk (Albizia) tree	Paeroa Domain, Willoughby Street, Paeroa	<i>Albizia julibrissin</i>	Visual Amenity
TR121		One Pecan tree	Paeroa Domain, Willoughby Street, Paeroa	<i>Carya illinoensis</i>	Visual Amenity
TR122		One Ginkgo tree	Paeroa Domain, Willoughby Street, Paeroa	<i>Ginkgo biloba</i>	Visual Amenity
TR123		Three Ash trees	Paeroa Domain, Willoughby Street, Paeroa	<i>Fraxinus spp.</i>	Visual Amenity, Historical/Cultural
TR124	G3	One Cypress tree	Road Reserve, Miller Avenue, Paeroa	<i>Cupressus spp.</i>	Visual Amenity, Botanical Value
TR125	K4, K7	One Kauri tree	Martha Hill, Waihi	<i>Agathis australis</i>	Visual Amenity, Botanical Value
TR126	K5	Three Macrocarpa Trees	Unformed road at confluence of Waitete Stream and Ohinemuri River (Waihi Paeroa Gold Extraction Company Dredging Plant Site, Waihi)	Macrocarpa	Visual Amenity, Historical/Cultural
TR127	K6	Six Totara	Unformed road, (Victoria Bridge Reserve) adjacent to Ohinemuri River	Podocarpus totara	Visual Amenity
TR128	K6	Group of Totara	Unformed road adjacent to Ohinemuri River north of Victoria Bridge	Podocarpus totara	Visual Amenity
TR129	K5	Group of Totara	Unformed road adjacent to Ohinemuri River north of Victoria Bridge	Podocarpus totara	Visual Amenity
TR130	K6	Grouping of Exotic Trees	Riverbank Terrace, Waihi	<i>Quercus robur</i> , <i>Liquidambar styraciflua</i> , <i>Ulmus procera</i> , <i>Platanus x hispanica</i>	Visual Amenity
TR131	K4	Grouping of native trees (Forest and Bird Millenium Project)	Morgan Park, Kenny Street, Waihi	Various	Visual Amenity, Botanical Value, Historical/Cultural

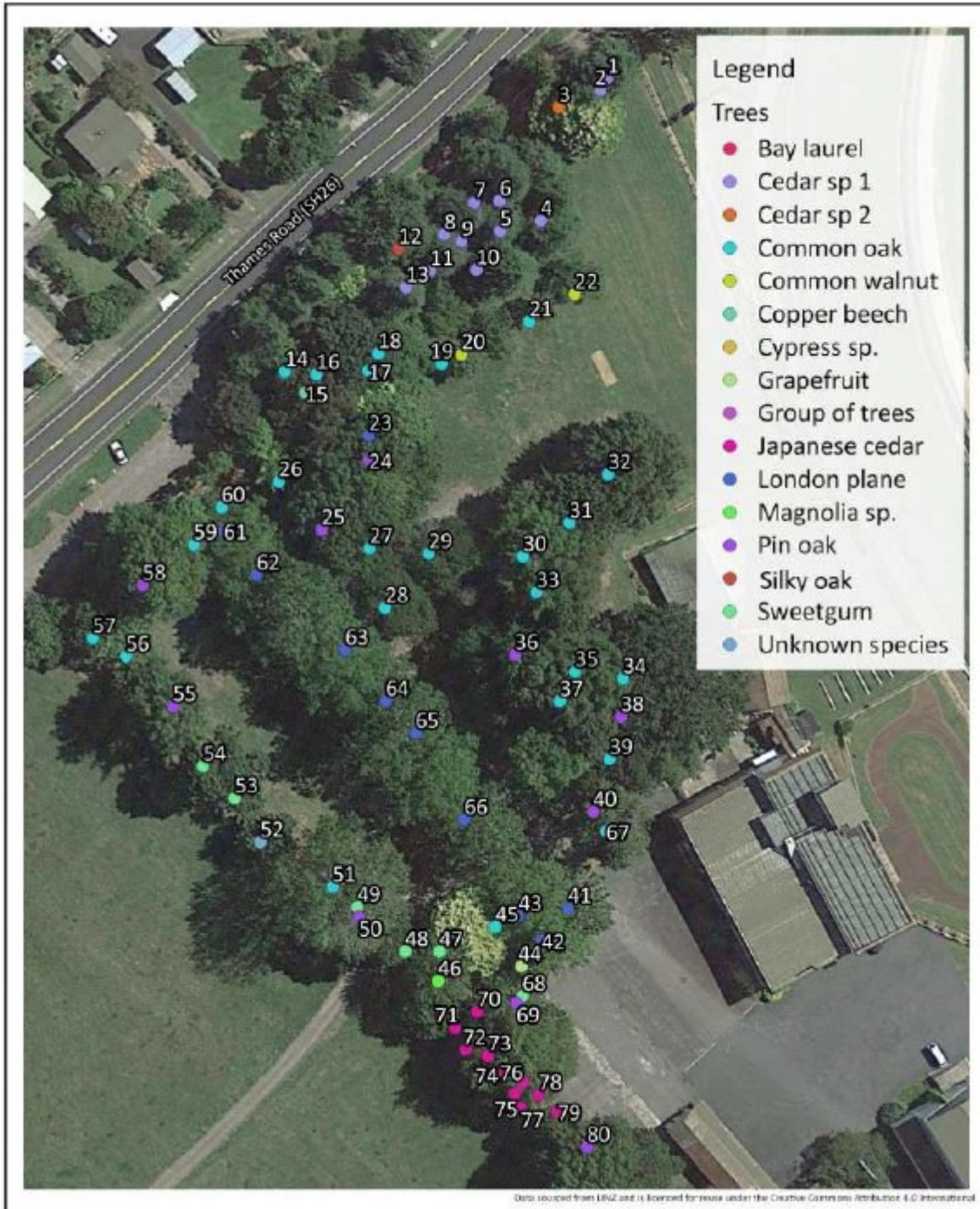
Tree ID Number	Map No.	Description	Location	Botanical Name	Significance Factor
TR132	K4	Two oak trees One Plane Tree One Totara tree	East of Morgan Park	Quercus robur, Platanus x hispanica, Podocarpus totara	Visual Amenity
TR133	31	Row of Oak trees	Black Hill Walkway adjacent to Ohinemuri River, Waihi	Quercus robur	Visual Amenity, Botanical Value, Historical/Cultural
TR134	23	One Poplar Tree (He Rakau Pitopito)	SH26, Komata		Cultural
TR135	B	Two Oak Trees	Turua Domain	Quercus palustris	Visual Amenity/Historical/Cultural
TR136	G4	Group of Trees	Former Paeroa Racecourse	Cedrus atlantica, Cedrus libani, Grevillea robusta, Quercus robur, Fagus sylvatica var. purpurea, Juglans regia, Plantanus acerfolia, Quercus palustris, Citrus x paradisi, Magnolia sp., Liquidamber styraciflua, Cryptomeria japonica	Visual Amenity / Cultural

Note: Trees in TR136 are shown on 6.4.8 Appendix 2: Significant Trees – Structure Plan Area 8.6.15 (former Paeroa Racecourse) and detailed in Schedule 6.4.9 – Appendix 3.

**6.4.7 APPENDIX 1: SIGNIFICANT TREES – PAEROA DOMAIN**



**6.4.8 APPENDIX 2: SIGNIFICANT TREES – STRUCTURE PLAN AREA 8.6.15 (FORMER PAEROA RACECOURSE)**



### 6.4.9 APPENDIX 3: TREE SCHEDULE FOR STRUCTURE PLAN AREA 8.6.15 (FORMER PAEROA RACECOURSE)

Tree ID	Common name	Scientific name
1.	Cedar sp 1	<i>Cedrus atlantica</i>
2.	Cedar sp 1	<i>Cedrus atlantica</i>
3.	Cedar sp 2	<i>Cedrus libani</i>
4.	Cedar sp 1	<i>Cedrus atlantica</i>
5.	Cedar sp 1	<i>Cedrus atlantica</i>
6.	Cedar sp 1	<i>Cedrus atlantica</i>
7.	Cedar sp 1	<i>Cedrus atlantica</i>
8.	Cedar sp 1	<i>Cedrus atlantica</i>
9.	Cedar sp 1	<i>Cedrus atlantica</i>
10.	Cedar sp 1	<i>Cedrus atlantica</i>
11.	Cedar sp 1	<i>Cedrus atlantica</i>
12.	Silky oak	<i>Grevillea robusta</i>
13.	Cedar sp 1	<i>Cedrus atlantica</i>
14.	Common oak	<i>Quercus robur</i>
15.	Copper beech	<i>Fagus sylvatica var. purpurea</i>
16.	Common oak	<i>Quercus robur</i>
17.	Common oak	<i>Quercus robur</i>
18.	Common oak	<i>Quercus robur</i>
19.	Common oak	<i>Quercus robur</i>
20.	Common walnut	<i>Juglans regia</i>
21.	Common oak	<i>Quercus robur</i>
22.	Common walnut	<i>Juglans regia</i>
23.	London plane	<i>Platanus acerfolia</i>
24.	Pin oak	<i>Quercus palustris</i>
25.	Pin oak	<i>Quercus palustris</i>
26.	Common oak	<i>Quercus robur</i>
27.	Common oak	<i>Quercus robur</i>
28.	Common oak	<i>Quercus robur</i>
29.	Common oak	<i>Quercus robur</i>
30.	Common oak	<i>Quercus robur</i>

Tree ID	Common name	Scientific name
31.	Common oak	<i>Quercus robur</i>
32.	Common oak	<i>Quercus robur</i>
33.	Common oak	<i>Quercus robur</i>
34.	Common oak	<i>Quercus robur</i>
35.	Common oak	<i>Quercus robur</i>
36.	Pin oak	<i>Quercus palustris</i>
37.	Common oak	<i>Quercus robur</i>
38.	Pin oak	<i>Quercus palustris</i>
39.	Common oak	<i>Quercus robur</i>
40.	Pin oak	<i>Quercus palustris</i>
41.	London Plane	<i>Platanus acerfolia</i>
42.	London Plane	<i>Platanus acerfolia</i>
43.	London Plane	<i>Platanus acerfolia</i>
44.	Grapefruit	<i>Citrus × paradisi</i>
45.	Common oak	<i>Quercus robur</i>
46.	Magnolia sp.	<i>Magnolia sp.</i>
47.	Sweetgum	<i>Liquidambar styraciflua</i>
48.	Sweetgum	<i>Liquidambar styraciflua</i>
49.	Sweetgum	<i>Liquidambar styraciflua</i>
50.	Pin oak	<i>Quercus palustris</i>
51.	Common oak	<i>Quercus robur</i>
52.	Unknown tree	-
53.	Sweetgum	<i>Liquidambar styraciflua</i>
54.	Sweetgum	<i>Liquidambar styraciflua</i>
55.	Pin oak	<i>Quercus palustris</i>
56.	Common oak	<i>Quercus robur</i>
57.	Common oak	<i>Quercus robur</i>
58.	Pin oak	<i>Quercus palustris</i>
59.	Common oak	<i>Quercus robur</i>
60.	Common oak	<i>Quercus robur</i>
61.	London Plane	<i>Platanus acerfolia</i>
62.	London Plane	<i>Platanus acerfolia</i>

Tree ID	Common name	Scientific name
63.	London Plane	<i>Platanus acerfolia</i>
64.	London Plane	<i>Platanus acerfolia</i>
65.	London Plane	<i>Platanus acerfolia</i>
66.	London Plane	<i>Platanus acerfolia</i>
67.	Common oak	<i>Quercus robur</i>
68.	Sweetgum	<i>Liquidambar styraciflua</i>
69.	Pin oak	<i>Quercus palustris</i>
70.	Japanese cedar	<i>Cryptomeria japonica</i>
71.	Japanese cedar	<i>Cryptomeria japonica</i>
72.	Japanese cedar	<i>Cryptomeria japonica</i>
73.	Japanese cedar	<i>Cryptomeria japonica</i>
74.	Japanese cedar	<i>Cryptomeria japonica</i>
75.	Japanese cedar	<i>Cryptomeria japonica</i>
76.	Japanese cedar	<i>Cryptomeria japonica</i>
77.	Japanese cedar	<i>Cryptomeria japonica</i>
78.	Japanese cedar	<i>Cryptomeria japonica</i>
79.	Japanese cedar	<i>Cryptomeria japonica</i>
80.	Pin oak	<i>Quercus palustris</i>