



A G E N D A

EASTERN PLAINS DRAINAGE DISTRICT COMMITTEE

Thursday, 04 May 2023, 1.00pm

Council Chamber
Ngatea Service Centre
84 Orchard West Road
[NGATEA](#)



Membership

Committee Members:

His Worship the Mayor, D A Adams

R P Hunter
K R Caddy
K J Reid
P Schouten
R Webster
A Green
T Nicholson
D Coldicutt

Council Representatives:

Councillor P Buckthought
Councillor S Crooymans
Councillor N Gray

Hauraki District Council staff:

A de Laborde (Group Manager – Service Delivery)
J de Vos (Utilities Manager)
B Stephens (Drainage Overseer)
G Russell (Land Drainage Contractor)
C Black (Council Secretary)

Waikato Regional Council Staff:

S Clark
J Olsen

Hauraki District Council, P O Box 17, William Street Paeroa, New Zealand
P: 07 862 8609 or 0800 734 834 (within the District)
E: info@hauraki-dc.govt.nz www.hauraki-dc.govt.nz

Delegations: Eastern Plains Drainage Committee (EPDD)

Membership	Land Drainage Advisory Committee consisting of one Councillor (with an alternate) and representation as scheduled from each of the following Drainage Areas within the Drainage District: <ul style="list-style-type: none">■ One representative (or alternative) of Kopuarahi/Orongo■ One representative (or alternative) of Horahia■ Two representatives (or alternative) of Wharepoa■ Two representatives (or alternatives) of Awaiti■ Two representatives (or alternatives) of Netherton
Quorum	As per Standing Order 11.2, half the members physically present.
Meeting frequency	The first Thursday in each month bi-monthly commencing at 1.00pm at the Ngatea Service Centre.

The Council delegates to the Drainage Committee the following powers, duties and responsibilities:

- To make recommendations to the Council on all matters relating to Land Drainage within their District.
- The Eastern Plains Drainage Committee can also make recommendations to Council on urban stormwater matters within their district.
- To make recommendations on Council's operational and capital estimates for Council's Draft Long Term Plan and Draft Annual Plans.
- To provide input to Land Drainage asset planning matters and Land Drainage rating reviews in their respective areas.
- To generally oversee and monitor the Council's annual work programmes within the nominated areas and to assist as necessary or as appropriate in the implementation of approved programmes.
- To facilitate the flow of information between ratepayers and staff.



EASTERN PLAINS DRAINAGE DISTRICT COMMITTEE

AGENDA

Thursday, 04 May 2022 – 1.00pm

Council Chamber, Ngatea Service Centre, 84 Orchard West Road, Ngatea

<u>Order of Business</u>	Pages
1. Councillor Representative will open the meeting and call for apologies.	
2. Election of Chairman and Deputy Chairman (Councillor Representative will call for nominations)	
3. Declarations of Late Items	
4. <u>Confirmation of Minutes</u>	
4.1 Eastern Plains District Drainage Committee Minutes 02-02-23	5
5. <u>Reporting (for information)</u>	
5.1 Waikato Regional Council Update on Activities (WRC representatives)	
5.2 Eastern Plains Drainage Activity Report January to March 2023 and Financial Report for the period for the 9 months to 31 March 2023	8
6. Member's feedback on drainage matters in their areas.	

HAURAKI DISTRICT COUNCIL

EASTERN PLAINS DRAINAGE DISTRICT COMMITTEE

MINUTES OF A MEETING OF THE EASTERN PLAINS DRAINAGE DISTRICT COMMITTEE HELD IN THE COUNCIL CHAMBERS, NGATEA SERVICE CENTRE, 84 ORCHARD WEST ROAD, NGATEA ON THURSDAY, 02 FEBRUARY 2023 COMMENCING AT 1.00PM

PRESENT R Hunter (Chairperson), K J Reid, K R Caddy, T Nicholson, A Green, D Coldicutt, P Schouten, R Webster, Cr S Crooymans (Council Representative) and Cr N Gray (Council Representative)

IN ATTENDANCE S Clark (WRC - Works Supervisor, Paeroa Team - Integrated Catchment Management), D Peddie (Group Manager – Business Support), G Russell (Drainage Contractor), B Stephens (Drainage Overseer) and C Black (Council Secretary)

APOLOGIES

RESOLVED

THAT the apology of Cr P Buckthought be received and sustained.

EPDD23/01

Hunter/Reid

CARRIED

LATE ITEMS

There were no late items.

CONFIRMATION: EASTERN PLAINS DRAINAGE DISTRICT COMMITTEE MINUTES - 29-09-22- 3279806

RESOLVED

THAT the minutes of the meeting of the Eastern Plains Drainage District Committee held on Thursday, 29 September 2022 are received and confirmed as a true and correct record.

EPDD23/02

Hunter/Caddy

CARRIED

WAIKATO REGIONAL COUNCIL UPDATE ON OPERATIONAL ACTIVITIES – FEBRUARY 2022

Steve Clark provided an overview of operational activities to date.

- Rainfall – January stats presented; Pinnacles 1517mm; Orongo 218mm; Kaihere 376mm; Maukoro Landing 266mm. All well above average.
- There were pumpstation issues over long weekend due to electrical storm – pumps tripping due to electrical fluctuations, and pole fuses blown because of lightning strikes.
- T-Head floodgates at Kopuatai peat dome end – have opened them up over the weather event to let water out of the peat dome.
- Structural audit on Carter pump and floodgate completed –
 - hole in both floodgate pipes. This has been addressed.
 - Water blasted sheet piling on the inlet and epoxy painted to extend its life.

- Roger Harris pump station inlet upgrade –
 - project extended due to cofferdam breach.
 - Was 3 weeks away from completion but now due to the poor weather, has been delayed.
 - A battery of mobile pumps is now in place
 - Advised landowners to photograph any issues and record date and time
- Machine cleaning Elstow Canal has commenced
- Annual stopbank inspections have been completed
- Overhauled Prices pump with a new motor

Roger Hunter raised an issue that a pile had snapped off at Cox's floodgate and was sitting across the floodgate outlet raised an issue.

DRAINAGE REPORT – SEPTEMBER – DECEMBER 2022 AND FINANCIAL REPORT FOR THE PERIOD 6 MONTHS TO 31 DECEMBER 2022 - 3279806

The Land Drainage Contractor and Drainage Overseer presented the land drainage activity report for September – December 2022.

RESOLVED

THAT the report be received.

EPDD22/03

Hunter/Webster

CARRIED

Drainage Overseer

- Normal routine maintenance has not been completed due to the continuous wet weather. Spraying has not yet commenced as there has not been suitable weather to enable this work to be carried out. Once water has gone we will get back to maintenance, spraying and weed cleaning.
- Focus has been on keeping pumps running, particularly over the more recent weather event.
- Roger Harris pumpstation upgrade – Awaiti West Road lifestyle blocks are flooding. WRC have put in mobile pumps at the H-Drain outlet. There is a shortage of pumps nationally to cope with the extreme weather event. Water will not reduce for some time without floodgate action.
- Floodgate action has been slow at many sites due to high river levels.

Drainage Contractor

- Water is sitting on paddocks for more than 3 days in some areas.
- High rainfall over January culminating in the recent high rainfall event.
- Many sites had more than a 10-year event with Mangatangi Stream recording a 50 to 80-year rainfall event.
- Piako first emergency ponding zone is not likely to operate.
- Pumps are showing high use. Focus has been about managing water and ensuring floodgates and pumps will operate, so no maintenance has been completed.

Financial Report – 2021-22 Financial Year

The final end of 2021/22 financial year reports were presented. Expenditure was well within budget over last financial year and reserves have increased to \$405,000.

EASTERN PLAINS DRAINAGE DISTRICT COMMITTEE – REVIEW OF PROPOSED 2023-24 BUDGETS

The Land Drainage Contractor presented the proposed 2023-24 Annual Plan budgets. It was noted that the proposed increase in expenditure was only \$5,000 or a 1.2% increase from existing budgets. With the reserve balance at current levels it was considered that no rate increase was necessary

RESOLVED

THAT the report be received.

EPDD23/04

Webster/Caddy

CARRIED

RESOLVED

THAT the rates remain at current levels and are not increased for the 2023-23 year.

EPDD23/05

Hunter/Reid

CARRIED

Member's feedback on drainage matters in their areas:

The members were invited to raise any matters requiring consideration within their designated drainage areas.

- Ted Nicholson – water has moved off his property and others in his area well.
- Richard Webster – vegetation growth has taken off.
- Damon Coldicutt – drains are in good condition.
- Peter Schouten – no issues.
- Kim Reid – water is not moving in places. H Drain is not draining well. Pukahu Road pump is operating now
- Andy Green – water still ponding in middle of his property. Culverts by Flint's is blocked up. Requested Drainage Overseer visit the property to review.
- Cr. Neil Gray – drain at end of Ngataipua Road is slow due to vegetation growth.
- Keven Caddy – Reservoir pump is now operating clean. There was initially a lot of weed to manage.

Re-Establishment of Land Drainage Advisory Committees for 2023-2026 Term

Members were reminded that nominations will be open from 28 February to 28 March 2023 for the re-establishment of Council's four Land Drainage Advisory Committees. The Council Secretary will be emailing out information on the process including maps of all drainage areas in each district plus nominations forms. These will also be available at the Paeroa Office and Ngatea Service Centre from 28 February.

The meeting closed at 2.33pm

CONFIRMED

R Hunter
Chairperson

04 May 2023

FOR INFORMATION | NGĀ MŌHIOTANGA



TO Eastern Plains Drainage Committee

AUTHOR Guy Russell
Land Drainage Engineer

FILE REFERENCE Document: 3393356
Appendix A: Ngatea rainfall figures
Appendix B: Pump running hours for 2022/23
Appendix C: Final financial statements to March 2023

PORTFOLIO HOLDER/S Councillor Buckthought
Councillor Croymans
Land drainage and flood protection portfolio

MEETING DATE 04 May 2023

SUBJECT **Eastern Plains land drainage activity report, January to March 2023**

SUMMARY | TE WHAKARĀPOPOTANGA

This Report covers drainage activities for the period of January to March 2023.

Due to the higher than normal amounts of rain over the last three months, staff have continued to monitor and respond to the assets to ensure that they will operate when necessary. The weather has also prevented the spray programme from commencing until early March 2023.

RECOMMENDATION | TE WHAIKUPU

THAT the report be received.

1 PURPOSE | TE ARONGA

The purpose of the report is to give the Committee an update on the operations and capital work pertaining to the Land Drainage and Flood Protection activities in the Eastern Plains drainage area for the months of January to March 2023.

2 BACKGROUND | TE KŌRERO Ā MUA

Hauraki District Council provides infrastructure for the land drainage and flood protection activity in four constituted drainage areas within its district in conjunction with Waikato Regional Council. The land drainage service is provided to over 47,000 ha of highly productive pastoral land and the activity aims primarily to ensure the productive capability of the land. The land drainage and flood protection network is comprised of stopbanks, floodgates, pumpstations and land drains.

In general assets are classified as flood protection (primary) or drainage (secondary) assets. The Eastern Plains drainage area consists of both flood protection assets and drainage assets that are the responsibility of Hauraki District Council, plus flood protection assets that are the responsibility of Waikato Regional Council.

3 Operational Activity

Vegetation Control

Spraying for the 2022/23 year did not commence until 20 March 2023 due to the adverse weather that has been experienced since August 2022. Since then 23.5 km have been sprayed within the Eastern Plains area and that includes the completion of the annual helicopter spray.

Mechanical Cleaning

There has been significant drain cleaning activity, mainly responding to issues that have arisen resulting from the rainfall events and because spraying had not been able to happen earlier due to the continuous adverse weather. The following work has been completed:

- 100m of the Simpson drain
- 1175m of the Langdon drain
- 2350m of the Ryan drain
- 1500m of the Awaiti drain
- 1000m of the McMillan drain
- 3000m of H-Drain
- 400m of the McCormack – Jefferies drain
- 50m of the South Catchment drain
- 900m of the Ridings drain

Other works

Routine maintenance and inspections of stopbanks, floodgates and culverts have been undertaken. Pumpstations have been continuously routinely checked with weed cleared from screens to keep them operational as necessary.

Cleared a blockage from Awaiti culvert and a culvert at 81 Awaiti Road. Mechanical weed removal was required at the Reservoir pumps, Awaiti West pumps and Johnstone pump.

Bylaw Approvals

Bylaw approvals were granted in the period as follows:

Culverts: K Aitchison, Hauraki Road; two culverts in Te Kauri No 1 drain (Drain No. C34)
Other: Nil

Subdivisions Commented On

Subdivisions commented on during the period as follows:

Nil

Rainfall

Rainfall figures for Ngatea are attached as Appendix A. The information includes the year to date rainfall for the first 9 months of the 2022/23 year, until the end of March 2023.

January's rainfall is the highest recorded since records began in 1963 at 322mm, some 511% greater than average. February's rainfall was 159mm, 230% greater than average and March's rainfall was 66mm, 85% of average. The total rainfall since July 2022 is running at 167% greater than average and is heading for the wettest 12 months on record (July to June). The high rainfall levels are reflected in the following high pump running hours

The rainfall event of 27 to 29 January 2023 (72 hrs or 3-day rainfall) resulted in significant flooding in some areas. The following summary is from the local readings at Ngatea, plus information around the district provided by WRC.

Rainfall site	Catchment	72 hr Rainfall depth	Return period
Queens Head	Ohinemuri	228mm	5 to 10 yr event
Golden Cross	Waitekauri	407mm	5 to 10 yr event
Appletree	Firth of Thames	182mm	20 to 30 yr event
Ngatea	Lower Piako	177mm	30 to 40 yr event
Maukoro Landing	Lower Piako	148mm	10 to 20 yr event
Maungakawa	Kaihere	202mm	80 to 100 yr event
Mangatangi Dam	Miranda – Kaiaua	296mm	60 to 80 yr event

As a result, ponding remained on land in the Patetonga-Waitakaruru- Miranda area for more than 3 days.

Most drainage catchments within the Eastern Plains area had water clear within three days and it was noted that there were few enquiries or complaints. The system generally worked well.

The exception was in the H-Drain and Awaiti catchments. The high Waihou River levels kept the floodgates closed for about a week and the Roger Harris pumpstation was out of action due to work upgrading the inlet bay. As a result, there was no discharge from the catchment until a battery of eight portable pumps was established at H-Drain outlet by WRC that provided some relief until the floodgates opened about a week after the rainfall event.

As a consequence, the Level of Service requirement for land drainage to clear ponded water within three days was not met, but it was an outlet to the river issue rather than an internal drainage issue.

Pump Operation

The pumps have had a significant amount of use in January and February due to the higher than average rainfall. January pump running was 1024 hours when the average is 200 hours,

some 512% greater than average. February running saw 1768 hours when the average is 167 hours, some 1059% greater than average. Pumps have continued to run in March, recording only 265% greater than average.

The main rainfall event occurred on 27 to 29 January, hence the February hours will include runoff from that event. Details so far this year are shown in Appendix B.

Financials

The March 2023 financial statement for the year to date is shown in Appendix C. As expected, vegetation control and mechanical cleaning are within budget, but pump operation is greater than budget. Overall expenditure is within budget for this time of the year.

Approval

Prepared by	Guy Russell Drainage Engineer
Approved by	Adrian de Laborde Service Delivery Manager

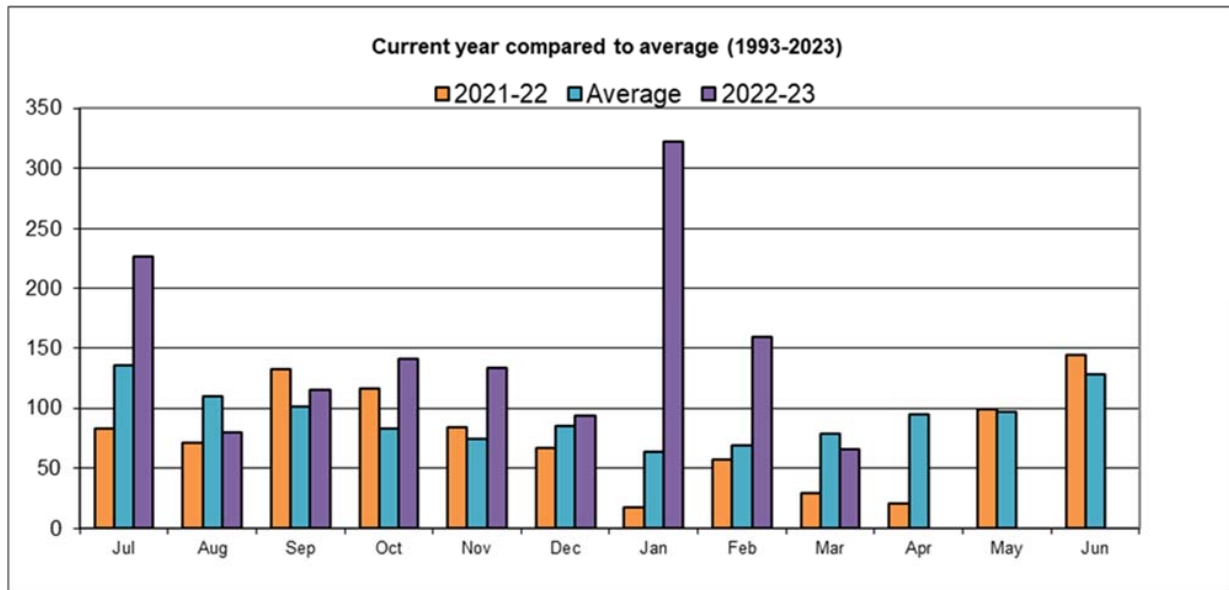
APPENDIX A

Ngatea Rainfall Figures; 1993 to present

Ngatea Monthly Rainfall													
Haywards Road (to 1999). HDC Depot (2000 on)													
Year	Jan	Feb	Mar	Apr	May	Jun	Jul	Aug	Sep	Oct	Nov	Dec	Totals
1993	36.0	28.5	95.0	50.0	123.0	181.5	8.0	111.0	58.0	37.0	100.0	28.5	857
1994	81.0	47.5	51.5	64.0	78.0	116.0	155.0	100.5	153.0	112.5	30.0	26.5	1016
1995	37.0	71.0	196.5	245.5	88.5	181.0	203.5	74.0	73.0	94.0	136.5	128.5	1529
1996	29.5	89.5	88.5	227.5	82.0	166.5	137.5	147.0	149.0	34.0	72.5	222.0	1446
1997	4.5	51.0	195.0	58.0	97.5	138.5	64.5	65.5	221.5	61.0	39.0	49.0	1045
1998	12.0	97.0	67.0	48.0	56.5	97.0	299.0	104.0	48.0	100.0	85.0	89.0	1103
1999	81.0	28.0	81.0	91.0	45.0	94.5	142.0	132.0	88.0	53.0	206.5	109.5	1152
2000	60.0	11.5	52.5	171.0	85.0	75.5	154.5	114.0	97.5	48.0	96.5	79.0	1045
2001	16.5	156.5	49.0	169.0	165.5	50.0	74.5	121.0	47.5	134.0	114.0	177.0	1275
2002	117.0	39.5	50.5	62.0	61.0	168.5	135.0	79.0	75.5	73.0	34.5	54.0	950
2003	110.0	105.0	102.0	134.0	73.0	124.5	101.5	58.5	155.0	107.0	36.5	111.5	1219
2004	98.5	230.0	11.5	21.0	175.5	106.5	120.5	112.0	119.0	80.0	56.0	130.5	1261
2005	30.5	32.0	32.5	7.0	147.5	118.0	152.5	59.0	87.0	145.5	65.5	107.0	984
2006	37.0	47.5	34.5	120.0	82.0	86.0	76.0	108.0	57.0	90.5	64.0	36.0	839
2007	56.0	27.0	146.0	45.0	41.0	92.0	281.0	95.0	68.5	76.0	40.0	53.0	1021
2008	2.0	35.0	40.5	146.5	71.0	152.5	253.0	166.0	52.0	94.0	47.0	61.0	1121
2009	59.0	120.0	30.0	72.0	91.0	150.0	124.0	91.0	85.0	119.0	35.0	81.0	1057
2010	63.0	4.0	13.0	44.0	139.0	230.5	90.0	229.0	146.0	18.0	28.0	62.0	1067
2011	270.0	9.0	172.0	85.0	101.0	110.0	127.0	57.0	74.0	76.0	15.0	157.0	1253
2012	63.0	82.0	130.0	39.0	111.0	52.0	179.0	130.0	85.0	69.0	71.0	64.0	1075
2013	2.0	17.0	23.0	128.0	162.0	117.0	48.0	122.0	133.0	41.0	104.0	96.0	993
2014	41.0	8.0	35.0	98.0	42.0	237.0	109.0	110.0	137.0	73.0	50.0	72.0	1012
2015	10.0	44.0	79.0	114.0	136.0	59.0	121.0	185.0	96.0	51.0	125.0	19.0	1039
2016	103.0	167.0	39.0	51.0	96.0	137.0	152.0	100.0	162.0	82.0	66.0	50.0	1205
2017	24.0	107.0	341.0	255.0	142.0	63.0	131.0	98.0	127.0	117.0	50.0	9.0	1464
2018	100.0	213.0	49.0	127.0	106.0	175.0	116.0	119.0	46.0	134.0	93.0	228.0	1506
2019	21.0	15.0	40.0	98.0	52.0	59.0	128.0	157.0	105.0	84.0	40.0	54.0	853
2020	10.0	15.0	43.0	25.0	83.0	264.0	85.0	116.0	43.0	23.0	114.0	30.0	851
2021	47.0	33.0	50.0	39.0	94.0	104.0	83.0	71.0	132.0	116.0	84.0	67.0	920
2022	18.0	57.0	29.0	21.0	99.0	144.0	227.0	80.0	115.0	141.0	133.0	94.0	1158
2023	322.0	159.0	66.0										547
Ave.	63	69	78	95	98	128	136	110	101	83	74	85	1110
Max	322	230	341	255	176	264	299	229	222	146	207	228	1529
Min.	2	4	12	7	41	50	8	57	43	18	15	9	839

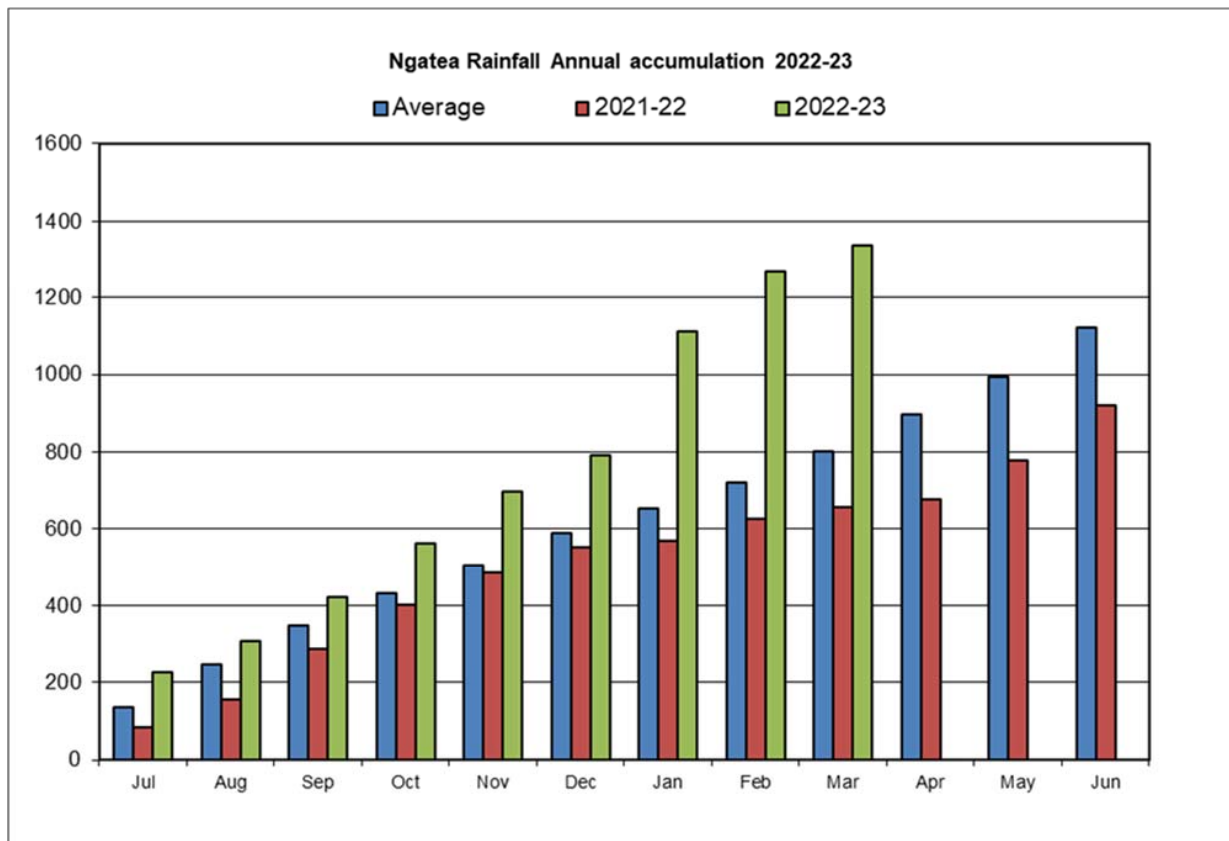
Ngatea Rainfall; Current year compared to last year & average, by month

Monthly totals for 2022 – 2023 year so far



Ngatea Rainfall; Monthly accumulation compared to last year & average

Monthly accumulation for 2022 – 2023 year



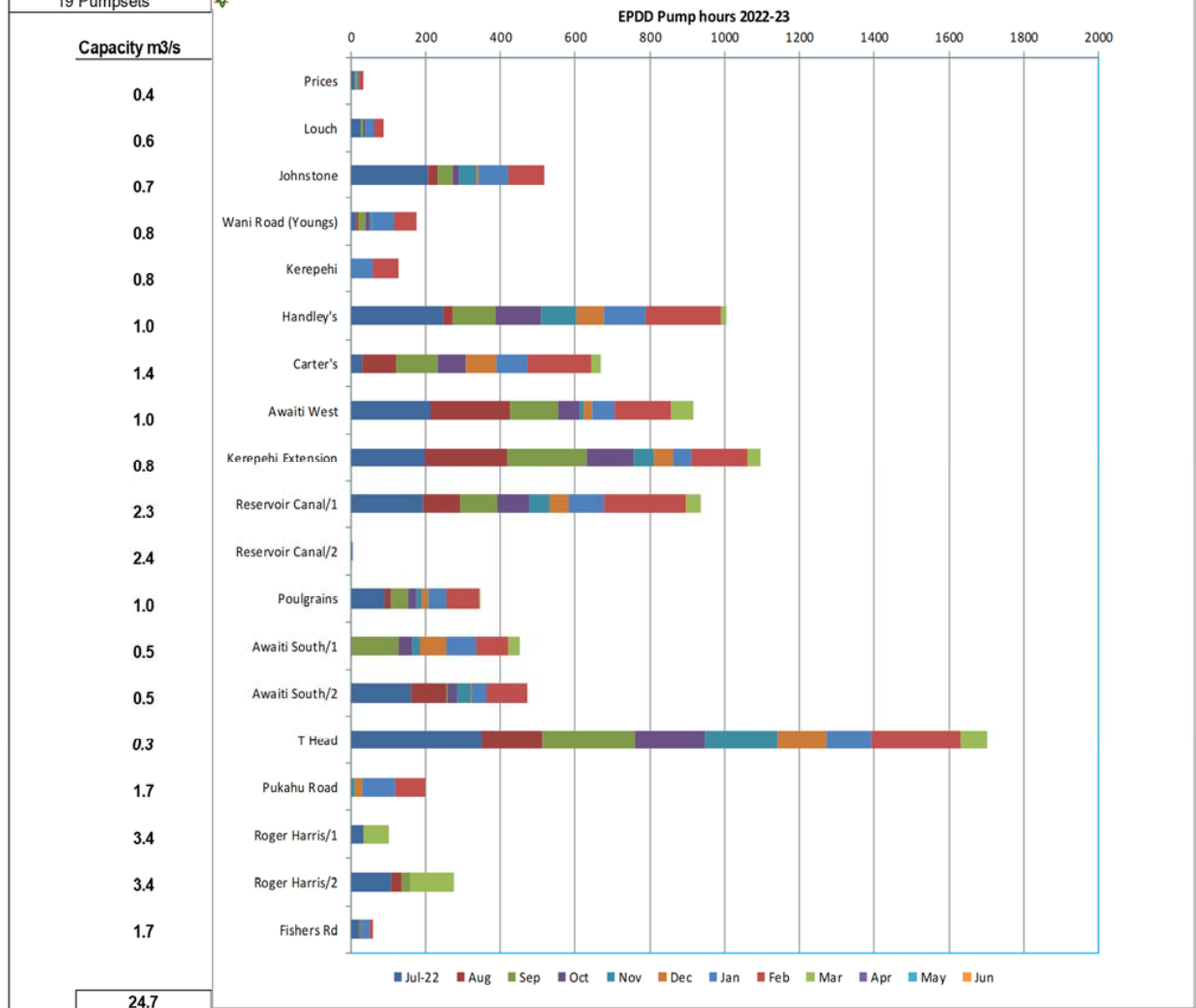
APPENDIX B

Eastern Plains Drainage Area; pump running hours, 2022/23

Eastern Plains DD	Jul-22	Aug	Sep	Oct	Nov	Dec	Jan	Feb	Mar	Apr	May	Jun	Total	Average
No 1 Prices	10	1	5	0	0	0	7	12	0	0	0	0	35	41
No 2 Louch	27	0	7	6	0	0	23	26	0	0	0	0	89	75
No 3 Johnstone	207	25	40	17	47	6	79	98	0	0	0	0	519	300
No 4 Wani Road (Young)	14	6	20	12	5	0	59	61	0	0	0	0	177	230
No 10 Kerepehi	1	0	0	0	0	2	57	68	0	0	0	0	128	282
No 13 Handley's	247	27	112	124	93	74	110	202	15	0	0	0	1004	462
No 14 Carter's	31	91	111	75	0	82	81	173	26	0	0	0	670	535
No 15 Awaiti West	214	213	129	56	12	21	62	149	59	0	0	0	915	638
No 16 Kerepehi Extensior	198	220	215	125	54	49	51	150	35	0	0	0	1097	728
No 19 Reservoir Canal/1	193	99	101	86	53	51	93	221	39	0	0	0	936	331
Reservoir Canal/2	0	0	0	0	0	0	4	0	0	0	0	0	4	13
No 20 Poulgrains	92	15	45	23	16	16	50	88	1	0	0	0	346	133
No 28 Awaiti South/1	0	3	126	37	19	71	79	86	30	0	0	0	451	195
Awaiti South/2	162	95	1	27	37	2	39	109	0	0	0	0	472	195
No 32 T Head	351	161	249	186	193	131	121	239	71	0	0	0	1702	2298
No 53 Pukahu Road	0	0	1	0	9	21	88	80	0	0	0	0	199	25
No 55 Roger Harris/1	34	0	0	0	0	0	0	0	68	0	0	0	102	71
Roger Harris/2	108	28	23	0	0	0	0	0	117	0	0	0	276	78
No 61 Fishers Rd	21	2	2	3	2	1	21	6	0	0	0	0	58	34
	1910	986	1187	777	540	527	1024	1768	461	0	0	0	9180	6663

16 Stations 138%

19 Pumpsets



APPENDIX C

Eastern Plains Drainage District							
Financial Report for 9 months to 31 March 2023							
Item	Total Budget	Budget YTD	Actual YTD	Variance	Actual % of YTD Budget	Actual % of Total Budget	Note
DRAINAGE OPERATIONS							
Vegetation Control							
Area 1	72,380	54,285	478	53,807			
Area 2	0	0	433	(433)			
Area 3	0	0	135	(135)			
Area 4	0	0	5,758	(5,758)			
Area 5	0	0	393	(393)			
TOTAL	72,380	54,285	7,197	47,088	13%	10%	
Mechanical Cleaning							
Area 1	109,604	82,203	90	82,113			
Area 2	0	0	0	0			
Area 3	0	0	0	0			
Area 4	0	0	8,270	(8,270)			
Area 5	0	0	56,184	(56,184)			
TOTAL	109,604	82,203	64,544	17,659	79%	59%	
Maintenance/Fencing/Culverts							
Area 1	7,755	5,816	0	5,816			
Area 2	0	0	135	(135)			
Area 3	0	0	90	(90)			
Area 4	0	0	0	0			
Area 5	0	0	0	0			
TOTAL	7,755	5,816	225	5,591	4%	3%	
TOTAL DRAIN MAINTENANCE							
	189,739	142,304	71,966	70,338	51%	38%	
Pumps							
General	23,265	17,449	52,343	(34,894)	300%	225%	
EPDD Pumps	82,720	62,040	48,457	13,583	78%	59%	
TOTAL	105,985	79,489	100,800	(21,311)	127%	95%	
Floodgates							
Floodgates	4,652	3,489	3,006	483	86%	65%	
TOTAL	4,652	3,489	3,006	483	86%	65%	
Stopbanks							
Tributary Banks				0			
TOTAL	0	0	0	0			
Other							
Weather Events	2,585	1,939	1,280	659	66%	50%	
Asset Liaison	3,902	2,927	2,565	362	88%	66%	
Consent Monitoring	0	0	0	0			
Data Collection	2,068	1,551	0	1,551	0%	0%	
Data Maintenance	3,265	2,449	1,761	688	72%	54%	
Routine Inspection	0	0	0	0			
Drain Inspection	4,898	3,674	4,725	(1,052)	129%	96%	
Rates	0	0	0	0			
Pump Operation	0	0	0	0			
Meeting Expenses	2,612	1,959	1,080	879	55%	41%	
Insurance	1,550	1,163	4,212	(3,052)	362%	272%	
TOTAL	20,880	15,660	15,623	37	100%	75%	
TOTAL OPERATING							
	321,256	240,942	191,395	49,547	79%	60%	
Overheads							
Overheads	69,691	52,268	52,272	(4)	100%	75%	
TOTAL	69,691	52,268	52,272	(4)	100%	75%	
Depreciation							
Depreciation	44,757	33,568	33,568	0	100%	75%	
TOTAL	44,757	33,568	33,568	0	100%	75%	
Interest							
Interest	(6,735)	(5,051)	0	(5,051)	0%	0%	
TOTAL	(6,735)	(5,051)	0	(5,051)	0%	0%	
TOTAL EXPENDITURE							
	428,969	321,727	277,235	44,492	86%	65%	
Rates Funding - EPDD							
	(420,336)	(315,252)	(315,252)	0	100%	75%	
Opening Balance as at 01/07/2022							
	(404,838)		(404,838)				
Operating movement	8,633		(38,017)				Rates at budgeted value at this point
Add back Depreciation	(44,757)		(33,568)				
Capital Movement: Drainage - Eastern Plains	0		0				
Projected Closing Balance	(440,962)		(476,423)				