

**RESOURCE CONSENT
CERTIFICATE**

Resource Consent: AUTHXXXXXXXX

File Number: XXXXXXXX

Pursuant to the Resource Management Act 1991, the Waikato Regional Council hereby grants consent to:

Agright New Zealand OpCo1 Limited
Suite 201, 201 Miller Street
North Sydney
NSW 2060
Australia

(hereinafter referred to as the Consent Holder)

Consent type: Discharge Permit (Discretionary Activity)

Consent subtype: Discharge to Air

Activity authorised: Discharge contaminants (including odour and dust) to air from a six shed commercial meat chicken farm and associated liquefied petroleum gas (LPG) fired chicken shed heaters and a diesel fired emergency generator.

Location: 780 Wani Road, Awaiti

Map Reference: NZTM XXXXXXXXX

Consent duration: This consent will commence on the date of decision notification to expire on XX XXX 2049.

	Conditions (For Each Farm)
1.	This consent is subject to compliance with the General Conditions in Schedule One.

Schedule ONE: GENERAL CONDITIONS

Number	Condition
	Generally in accordance
1.	<p>The meat chicken farm comprising six sheds sited on the property legally described as XXXXXX (hereinafter referred to as the “site”) must be operated in general accordance with:</p> <ul style="list-style-type: none"> (i) the application for this resource consent by Mitchell Daysh Limited and associated assessment of environmental effects, appendices and supporting information, including: <ul style="list-style-type: none"> a. The “Site Plans” provided in the Infrastructure Report prepared by Maven attached as Appendix X to the AEE; and b. The “DRAFT Site Management Plan” attached as Appendix X to the AEE. <p>The resource consent conditions below must prevail should any inconsistencies between the application documentation, management plan and the conditions occur.</p>
2.	The site must be operated under the commercial free-range farming model or barn raised farming model whereby the stocking rate must not exceed 18 birds per m ² .
3.	Prior to the first intake of birds at any of the rearing sheds, the Consent Holder must ensure that there is a permanent, operational, emergency generator on site.
	Site Management Plan
4.	<p>By no later than two months prior to the first intake of birds at the rearing sheds, the Consent Holder must provide the Waikato Regional Council, for certification, an updated Site Management Plan (“SMP”) generally in accordance with the “DRAFT Site Management Plan” attached as Appendix X to the AEE with reference to all of the matters outlined in sub-clauses (i) – (xii) below.</p> <p>The Consent Holder must provide the Waikato Regional Council with written notice of any subsequent revisions or amendments to the SMP. As a minimum the SMP must be reviewed by the Consent Holder every 4 years. The SMP must always document how compliance will be achieved with the conditions of this consent and the SMP must always include the following matters:</p> <ul style="list-style-type: none"> (i) Contact details and responsibilities of key personnel who are responsible for implementing the SMP; (ii) General odour management and minimization procedures for the site’s operation including load-out and washing; (iii) Identification of potential sources of odour; (iv) Measures available to avoid, remedy or mitigate adverse effects from these sources; (v) Details of self-monitoring that will be carried out including details of odour monitoring; (vi) Methods for ensuring familiarisation of all staff with consent conditions/contents of the SMP; (vii) Protocols to regularly verify litter moisture content and the best practicable steps to be taken to comply with the conditions of this resource consent; (viii) Protocols for management of wash-water and stormwater disposal systems; (ix) Protocols for maintenance of ventilation systems; (x) The provision of contact details to neighbours for lodging complaints or feedback;

	<p>(xi) Procedure for dealing with complaints. These procedures shall be generally in accordance with the procedures outlined in the Ministry for the Environment Good Practice Guide for Assessing and Managing Odour;</p> <p>(xii) Maintenance of the complaints record; and</p> <p>The meat chicken farm must at all times be operated in general accordance with the current version of the SMP. In the event of any conflict or inconsistency between the conditions of this consent and the provisions of the SMP, then the conditions of this consent must prevail.</p>
	Certification
5.	Prior to the first intake of birds at any of the rearing sheds, the Consent Holder must engage an appropriately qualified and experienced professional to provide certification to the Waikato Regional Council that the ventilation and indirect heating systems for each shed have been constructed and installed in general accordance with the design referred to in Condition 1(i) above. Once installed, the Consent Holder must maintain the ventilation and heating systems in accordance with manufacturer's specifications
	Odour and dust emissions
6.	As a result of the operation of the meat chicken farm, the discharge must not result in odour that is objectionable to the extent that it causes an adverse effect at sensitive receptor locations (dwellings) positioned beyond the land boundary and which existed at the date of the commencement of this consent, as identified in Schedule Two.
7.	As a result of the operation of the meat chicken farm, there must be no discharge of particulate matter that is objectionable to the extent that it causes an adverse effect at sensitive receptor locations (dwellings) positioned beyond the land boundary and which existed at the date of the commencement of this consent, as shown in Schedule Two.
	Operations
8.	Fugitive emissions of dust and odour from the sheds shall be minimised by maintaining the shed cladding in a good condition and as far as practicable be free from leaks. Shed doors shall remain closed at all times except for access. Air flow for adequate ventilation of the sheds shall be provided by computer-controlled fans.
9.	The back-up generator shall be routinely tested in accordance with the manufacturer's instructions and maintained to minimise discharges of smoke during operation as far as practicable.
10.	The Consent Holder shall adopt the best practicable option to ensure that the litter is maintained in a friable condition.
	Advice Note: Friable litter is expected to have a moisture content of less than 40%.
	Removal of chicken litter
11.	<p>Chicken litter must be removed from the sheds in a manner that achieves compliance with Conditions 6 and 7. As a minimum this will include:</p> <p>(i) Sheds must be thoroughly cleaned at the end of each cycle so that no accumulation of dust or odorous materials occurs;</p> <p>(ii) Litter must be removed off-site from the sheds at the end of each production cycle. Spent litter must not be reused during subsequent production cycles;</p> <p>(iii) Litter cleared from the sheds must be removed from the site as soon as practicable; and</p>



	(iv) Used litter spilt outside the sheds during the clean-out operations must be removed on the same day that it was spilt.
	Removal of bird mortalities
12.	The Consent Holder must inspect each shed on a daily basis, at a minimum, and remove all bird mortalities. All removed mortalities must be stored in a chilled condition prior to removal off-site to an appropriately authorised disposal facility.
	Notification and communication
13.	The Consent Holder must advise the Waikato Regional Council Monitoring Officer as soon as practicable and within 24 hours of the receipt of any complaints received by the Consent Holder regarding the meat chicken farming operation.
	Complaints Register
14.	<p>The Consent Holder must maintain a register to record all complaints relating to the meat chicken farming operation received by the Consent Holder (whether such complaints are deemed by the Waikato Regional Council's Monitoring Officer to be objectionable or not). The register must be made available to the Waikato Regional Council Monitoring Officer on request, and must record the following:</p> <ul style="list-style-type: none"> (i) the date, time and duration of the event; (ii) the name (if known) and location of the complainant when the event was detected; (iii) measures taken to verify the event; (iv) the weather conditions and wind direction at the meat chicken sheds and age of the birds when the event allegedly occurred; (v) the possible causes of the event; (vi) any corrective action taken by the Consent Holder in response to the complaint; and (vii) comments regarding corrective action provided back to the complainant.
	Objectionable Effect and Report
15.	<p>Should the meat chicken farming activity cause an objectionable odour or particulate matter effect to the extent that it causes an adverse effect (as deemed so by the Waikato Regional Council Monitoring Officer) at one or more of the receptor locations (dwellings) positioned beyond the land boundary which existed at the date of the commencement of this consent as shown in Schedule Two, the Consent Holder must within five days of being advised of this objectionable effect, provide a written report to the Waikato Regional Council specifying:</p> <ul style="list-style-type: none"> (i) the cause or likely cause of the event and any factors which influenced its severity; (ii) the nature and timing of any measures implemented by the Consent Holder to avoid, remedy or mitigate any adverse effects; and (iii) the steps to be taken in future to prevent recurrence of similar events.
	LPG-fired heaters
16.	The rate of heat release from LPG fired heaters used to provide heat for the six poultry sheds shall not exceed a total of 3,060 kilowatts.
17.	Fuel used in all heaters shall comply with the New Zealand Standard Specification for Liquefied Petroleum Gas (NZS: 5435).
18.	Shed heating equipment must be serviced in accordance with manufacturer specifications by a suitably qualified service provider. The Consent Holder must maintain a log of the annual service records, and the service log shall be made available to the Waikato Regional Council upon request and within two working

	days.
	Monitoring
19.	The Consent Holder must maintain records in sufficient detail to demonstrate compliance with the maximum bird stocking density stated in Condition 2 at any point in time and must provide those records to the Waikato Regional Council Monitoring Officer on request.
20.	<p>The sheds shall be subject to constant electronic monitoring of the following parameters related to odour management:</p> <ul style="list-style-type: none"> (i) Temperature; (ii) Humidity; (iii) Ventilation rates; and (iv) Water and feed consumption. <p>The electronic monitors shall log these details so that they can be viewed in real time by the Consent Holder remotely and feature alarms to remotely alert the Consent Holder to any instances of abnormal conditions that may cause increased odour discharges.</p>
21.	<p>The interior of all sheds shall be inspected at least four times per day when birds are present. Any conditions within the sheds which are identified to cause discharges of dust or odour which may not comply with Conditions 7 or 8 shall be immediately remediated with a log recorded of actions taken. The following aspects shall be observed for each shed during each inspection and any abnormal conditions logged (aside from temperature and humidity which are to be continuously logged by the electronic monitoring system):</p> <ul style="list-style-type: none"> (i) Litter condition, including its moisture content; (ii) Bird condition and stocking density; (iii) Temperature and humidity; (iv) Feed condition, including any odour generated by the feed; and (v) Any elevated odour levels within or in the vicinity of the sheds. <p>The log shall be made available to the Waikato Regional Council on request and within two working days.</p>
22.	<p>Prior to the first intake of birds at any of the rearing sheds, a meteorological station with the following minimum criteria must be installed, operated and maintained at the Consent Holder's site as follows:</p> <ul style="list-style-type: none"> (i) Measures wind speed and direction, temperature, humidity, and barometric pressure; (ii) Records data as ten-minute or shorter time averages; (iii) Is located to provide data that is representative of the wind patterns of the site; (iv) Includes wind speed and direction sensors that have minimum stall and start speeds of 0.5 metres per second; and (v) Is serviced and maintained in accordance with the manufacturer's instructions. <p>A log shall be maintained of the meteorological data recorded under this condition, which shall be made available to the Waikato Regional Council on request and within two working days.</p>
	Reporting
23.	Annually, by no later than 31 January, the Consent Holder must forward to Waikato Regional Council Monitoring Officer an Annual Report. As a minimum, the Annual

	<p>Report must include the following information:</p> <ul style="list-style-type: none"> (i) A summary of the previous calendar year's stocking density data in order that compliance with Condition 2 can be monitored; and (ii) A summary of the total volumes of fuel used to heat the chicken sheds and the associated carbon dioxide equivalent of greenhouse gases discharged.
	<p>Accidental Discovery Protocols</p>
24.	<p>If, at any time during any earthworks authorised by these consents, any archaeological features (including human remains, archaeology and artefacts) are uncovered on the subject site, works must cease and the Council and Heritage New Zealand Pouhere Taonga (09 307 9920) must be notified immediately, and the following accidental protocol must be followed:</p> <ul style="list-style-type: none"> (i) All earthworks must cease in the immediate vicinity (at least 10m from the site of discovery) while a suitably qualified archaeologist is consulted on the type of remains; (ii) If the material is identified by the archaeologist as human, archaeology or artefact, earthworks must not be resumed in the affected area (as defined by the archaeologist). The consent holder must immediately advise the Council, Heritage New Zealand Pouhere Taonga and NZ Police (if human remains are found) and arrange a site inspection with these parties immediately after discovery. (iii) If the discovery contains koiwi, archaeology or artefacts of Māori origin, relevant mana whenua representatives are to be provided information on the nature and location of the discovery. (iv) The consent holder must not recommence works until approved by the Council. <p>The consent holder must ensure relevant mana whenua are invited to monitor the earthworks and conduct karakia and other such religious or cultural ceremonies and activities as appropriate.</p>
	<p>Review</p>
25.	<p>The Council's Monitoring Officer may, in the period August – October of any year serve notice on the Consent Holder under Section 128(1) of the Resource Management Act 1991, of its intention to review the conditions of this resource consent for the following purposes:</p> <ul style="list-style-type: none"> (i) If necessary and appropriate, to require the holder of this resource consent to adopt the best practicable option to remove or reduce adverse effects on the receiving environment; and/or: (ii) To review the effectiveness of the conditions of this resource consent in avoiding or mitigating any adverse effects on the environment from the exercise of this resource consent and if necessary to avoid, remedy or mitigate such effects by way of further or amended conditions.

Schedule TWO: Land Boundary and Receptor Locations



-  Land Boundary
-  Existing Dwellings

**RESOURCE CONSENT
CERTIFICATE**

Resource Consent: AUTHXXXXXXXX

File Number: XXXXXXXX

Pursuant to the Resource Management Act 1991, the Waikato Regional Council hereby grants consent to:

Agright New Zealand OpCo1 Limited
Suite 201, 201 Miller Street
North Sydney
NSW 2060
Australia

(hereinafter referred to as the Consent Holder)

Consent type: Discharge Permit (Discretionary Activity)

Consent subtype: Discharge to Air

Activity authorised: Discharge contaminants (including odour and dust) to air from a six shed commercial meat chicken farm and associated liquefied petroleum gas (LPG) fired chicken shed heaters and a diesel fired emergency generator.

Location: 874 Wani Road, Awaiti

Map Reference: NZTM XXXXXXXXX

Consent duration: This consent will commence on the date of decision notification to expire on XX XXX 2049.

	Conditions (For Each Farm)
1.	This consent is subject to compliance with the General Conditions in Schedule One.

Schedule ONE: GENERAL CONDITIONS

Number	Condition
	Generally in accordance
1.	<p>The meat chicken farm comprising six sheds sited on the property legally described as XXXXXX (hereinafter referred to as the “site”) must be operated in general accordance with:</p> <p>(ii) the application for this resource consent by Mitchell Daysh Limited and associated assessment of environmental effects, appendices and supporting information, including:</p> <ol style="list-style-type: none"> a. The “Site Plans” provided in the Infrastructure Report prepared by Maven attached as Appendix X to the AEE; and b. The “DRAFT Site Management Plan” attached as Appendix X to the AEE. <p>The resource consent conditions below must prevail should any inconsistencies between the application documentation, management plan and the conditions occur.</p>
2.	The site must be operated under the commercial free-range farming model or barn raised farming model whereby the stocking rate must not exceed 18 birds per m ² .
3.	Prior to the first intake of birds at any of the rearing sheds, the Consent Holder must ensure that there is a permanent, operational, emergency generator on site.
	Site Management Plan
4.	<p>By no later than two months prior to the first intake of birds at the rearing sheds, the Consent Holder must provide the Waikato Regional Council, for certification, an updated Site Management Plan (“SMP”) generally in accordance with the “DRAFT Site Management Plan” attached as Appendix X to the AEE with reference to all of the matters outlined in sub-clauses (i) – (xii) below.</p> <p>The Consent Holder must provide the Waikato Regional Council with written notice of any subsequent revisions or amendments to the SMP. As a minimum the SMP must be reviewed by the Consent Holder every 4 years. The SMP must always document how compliance will be achieved with the conditions of this consent and the SMP must always include the following matters:</p> <ol style="list-style-type: none"> (i) Contact details and responsibilities of key personnel who are responsible for implementing the SMP; (ii) General odour management and minimization procedures for the site’s operation including load-out and washing; (iii) Identification of potential sources of odour; (iv) Measures available to avoid, remedy or mitigate adverse effects from these sources; (v) Details of self-monitoring that will be carried out including details of odour monitoring; (vi) Methods for ensuring familiarisation of all staff with consent conditions/contents of the SMP; (vii) Protocols to regularly verify litter moisture content and the best practicable steps to be taken to comply with the conditions of this resource consent; (viii) Protocols for management of wash-water and stormwater disposal systems; (ix) Protocols for maintenance of ventilation systems; (x) The provision of contact details to neighbours for lodging complaints or feedback; (xi) Procedure for dealing with complaints. These procedures shall be generally in accordance with the procedures outlined in the Ministry for the Environment Good Practice Guide for Assessing and Managing Odour;

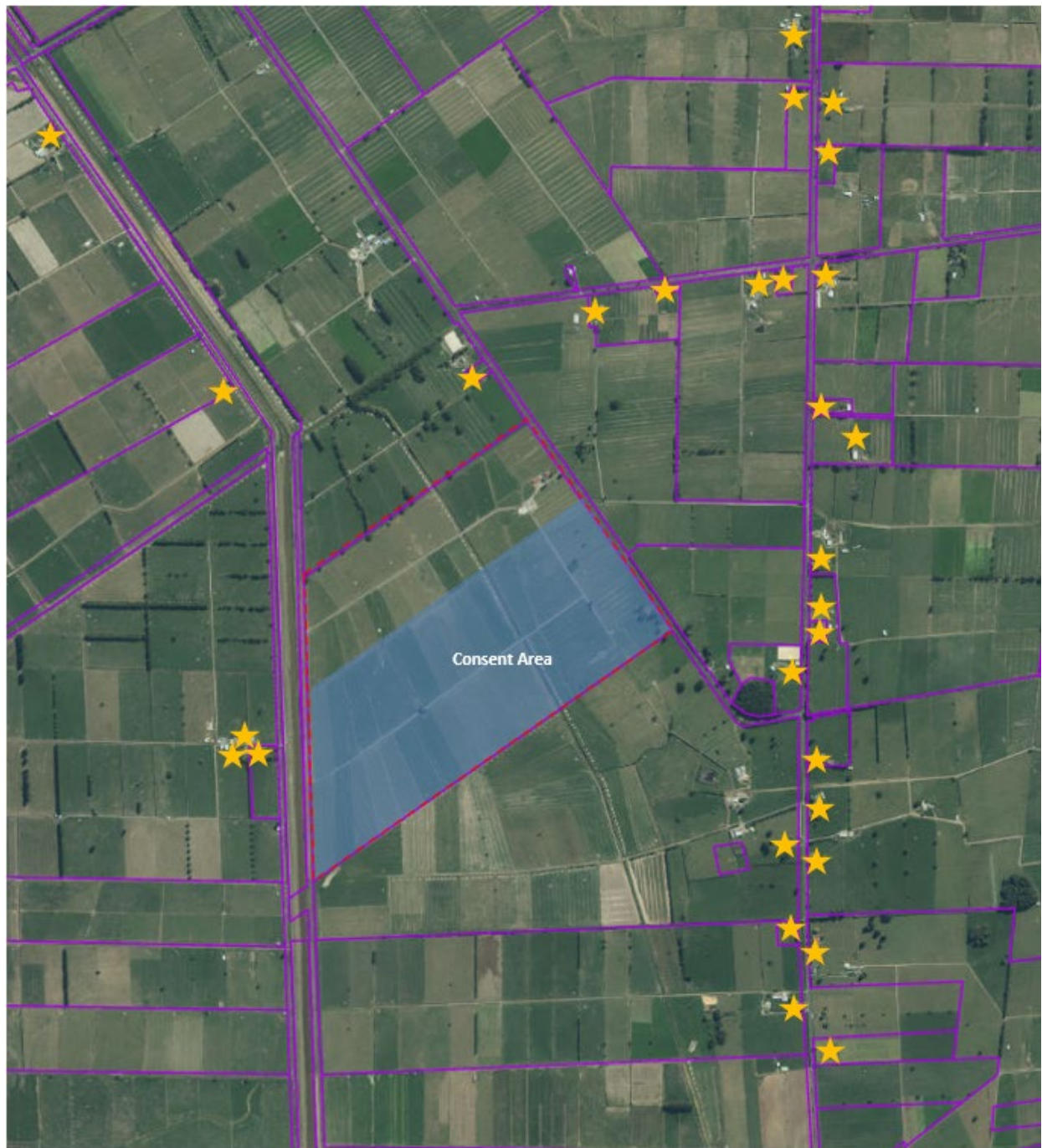
	<p>(xii) Maintenance of the complaints record; and</p> <p>The meat chicken farm must at all times be operated in general accordance with the current version of the SMP. In the event of any conflict or inconsistency between the conditions of this consent and the provisions of the SMP, then the conditions of this consent must prevail.</p>
	Certification
5.	<p>Prior to the first intake of birds at any of the rearing sheds, the Consent Holder must engage an appropriately qualified and experienced professional to provide certification to the Waikato Regional Council that the ventilation and indirect heating systems for each shed have been constructed and installed in general accordance with the design referred to in Condition 1(i) above. Once installed, the Consent Holder must maintain the ventilation and heating systems in accordance with manufacturer's specifications</p>
	Odour and dust emissions
6.	<p>As a result of the operation of the meat chicken farm, the discharge must not result in odour that is objectionable to the extent that it causes an adverse effect at sensitive receptor locations (dwellings) positioned beyond the land boundary and which existed at the date of the commencement of this consent, as shown in Schedule Two.</p> <p>Dwellings which existed at the date of the commencement of this consent are those shown in Schedule Two.</p>
7.	<p>As a result of the operation of the meat chicken farm, there must be no discharge of particulate matter that is objectionable to the extent that it causes an adverse effect at sensitive receptor locations (dwellings) positioned beyond the land boundary and which existed at the date of the commencement of this consent, as shown in Schedule Two.</p> <p>Dwellings which existed at the date of the commencement of this consent are those shown in Schedule Two.</p>
	Operations
8.	<p>Fugitive emissions of dust and odour from the sheds shall be minimised by maintaining the shed cladding in a good condition and as far as practicable be free from leaks. Shed doors shall remain closed at all times except for access. Air flow for adequate ventilation of the sheds shall be provided by computer-controlled fans.</p>
9.	<p>The back-up generator shall be routinely tested in accordance with the manufacturer's instructions and maintained to minimise discharges of smoke during operation as far as practicable.</p>
10.	<p>The Consent Holder shall adopt the best practicable option to ensure that the litter is maintained in a friable condition.</p>
	Advice Note: Friable litter is expected to have a moisture content of less than 40%.
	Removal of chicken litter
11.	<p>Chicken litter must be removed from the sheds in a manner that achieves compliance with Conditions 6 and 7. As a minimum this will include:</p> <ul style="list-style-type: none"> (i) Sheds must be thoroughly cleaned at the end of each cycle so that no accumulation of dust or odorous materials occurs; (ii) Litter must be removed off-site from the sheds at the end of each production cycle. Spent litter must not be reused during subsequent production cycles;

	<ul style="list-style-type: none"> (iii) Litter cleared from the sheds must be removed from the site as soon as practicable; and (iv) Used litter spilt outside the sheds during the clean-out operations must be removed on the same day that it was spilt.
	Removal of bird mortalities
12.	The Consent Holder must inspect each shed on a daily basis, at a minimum, and remove all bird mortalities. All removed mortalities must be stored in a chilled condition prior to removal off-site to an appropriately authorised disposal facility.
	Notification and communication
13.	The Consent Holder must advise the Waikato Regional Council Monitoring Officer as soon as practicable and within 24 hours of the receipt of any complaints received by the Consent Holder regarding the meat chicken farming operation.
	Complaints Register
14.	<p>The Consent Holder must maintain a register to record all complaints relating to the meat chicken farming operation received by the Consent Holder (whether such complaints are deemed by the Waikato Regional Council's Monitoring Officer to be objectionable or not). The register must be made available to the Waikato Regional Council Monitoring Officer on request, and must record the following:</p> <ul style="list-style-type: none"> (i) the date, time and duration of the event; (ii) the name (if known) and location of the complainant when the event was detected; (iii) measures taken to verify the event; (iv) the weather conditions and wind direction at the meat chicken sheds and age of the birds when the event allegedly occurred; (v) the possible causes of the event; (vi) any corrective action taken by the Consent Holder in response to the complaint; and (vii) comments regarding corrective action provided back to the complainant.
	Objectionable Effect and Report
15.	<p>Should the meat chicken farming activity cause an objectionable odour or particulate matter effect to the extent that it causes an adverse effect (as deemed so by the Waikato Regional Council Monitoring Officer) at one or more of the receptor locations (dwellings) positioned beyond the land boundary and which existed at the date of the commencement of this consent as shown in Schedule Two, the Consent Holder must within five days of being advised of this objectionable effect, provide a written report to the Waikato Regional Council specifying:</p> <ul style="list-style-type: none"> (i) the cause or likely cause of the event and any factors which influenced its severity; (ii) the nature and timing of any measures implemented by the Consent Holder to avoid, remedy or mitigate any adverse effects; and (iii) the steps to be taken in future to prevent recurrence of similar events.
	LPG-fired heaters
16.	The rate of heat release from LPG fired heaters used to provide heat for the six poultry sheds shall not exceed a total of 3,060 kilowatts.
17.	Fuel used in all heaters shall comply with the New Zealand Standard Specification for Liquefied Petroleum Gas (NZS: 5435).
18.	Shed heating equipment must be serviced in accordance with manufacturer specifications by a suitably qualified service provider. The Consent Holder must

	maintain a log of the annual service records, and the service log shall be made available to the Waikato Regional Council upon request and within two working days.
	Monitoring
19.	The Consent Holder must maintain records in sufficient detail to demonstrate compliance with the maximum bird stocking density stated in Condition 2 at any point in time and must provide those records to the Waikato Regional Council Monitoring Officer on request.
20.	<p>The sheds shall be subject to constant electronic monitoring of the following parameters related to odour management:</p> <ul style="list-style-type: none"> (i) Temperature; (ii) Humidity; (iii) Ventilation rates; and (iv) Water and feed consumption. <p>The electronic monitors shall log these details so that they can be viewed in real time by the Consent Holder remotely and feature alarms to remotely alert the Consent Holder to any instances of abnormal conditions that may cause increased odour discharges.</p>
21.	<p>The interior of all sheds shall be inspected at least four times per day when birds are present. Any conditions within the sheds which are identified to cause discharges of dust or odour which may not comply with Conditions 7 or 8 shall be immediately remediated with a log recorded of actions taken. The following aspects shall be observed for each shed during each inspection and any abnormal conditions logged (aside from temperature and humidity which are to be continuously logged by the electronic monitoring system):</p> <ul style="list-style-type: none"> (i) Litter condition, including its moisture content; (ii) Bird condition and stocking density; (iii) Temperature and humidity; (iv) Feed condition, including any odour generated by the feed; and (v) Any elevated odour levels within or in the vicinity of the sheds. <p>The log shall be made available to the Waikato Regional Council on request and within two working days.</p>
22.	<p>Prior to the first intake of birds at any of the rearing sheds, a meteorological station with the following minimum criteria must be installed, operated and maintained at the Consent Holder's site as follows:</p> <ul style="list-style-type: none"> (i) Measures wind speed and direction, temperature, humidity, and barometric pressure; (ii) Records data as ten-minute or shorter time averages; (iii) Is located to provide data that is representative of the wind patterns of the site; (iv) Includes wind speed and direction sensors that have minimum stall and start speeds of 0.5 metres per second; and (v) Is serviced and maintained in accordance with the manufacturer's instructions. <p>A log shall be maintained of the meteorological data recorded under this condition, which shall be made available to the Waikato Regional Council on request and within two working days.</p>
	Reporting
23.	Annually, by no later than 31 January, the Consent Holder must forward to Waikato Regional Council Monitoring Officer an Annual Report. As a minimum, the Annual

	<p>Report must include the following information:</p> <ul style="list-style-type: none"> (i) A summary of the previous calendar year's stocking density data in order that compliance with Condition 2 can be monitored; and (ii) A summary of the total volumes of fuel used to heat the chicken sheds and the associated carbon dioxide equivalent of greenhouse gases discharged.
	<p>Accidental Discovery Protocols</p>
24.	<p>If, at any time during any earthworks authorised by these consents, any archaeological features (including human remains, archaeology and artefacts) are uncovered on the subject site, works must cease and the Council and Heritage New Zealand Pouhere Taonga (09 307 9920) must be notified immediately, and the following accidental protocol must be followed:</p> <ul style="list-style-type: none"> (i) All earthworks must cease in the immediate vicinity (at least 10m from the site of discovery) while a suitably qualified archaeologist is consulted on the type of remains; (ii) If the material is identified by the archaeologist as human, archaeology or artefact, earthworks must not be resumed in the affected area (as defined by the archaeologist). The consent holder must immediately advise the Council, Heritage New Zealand Pouhere Taonga and NZ Police (if human remains are found) and arrange a site inspection with these parties immediately after discovery. (iii) If the discovery contains koiwi, archaeology or artefacts of Māori origin, relevant mana whenua representatives are to be provided information on the nature and location of the discovery. (iv) The consent holder must not recommence works until approved by the Council. <p>The consent holder must ensure relevant mana whenua are invited to monitor the earthworks and conduct karakia and other such religious or cultural ceremonies and activities as appropriate.</p>
	<p>Review</p>
25.	<p>The Council's Monitoring Officer may, in the period August – October of any year serve notice on the Consent Holder under Section 128(1) of the Resource Management Act 1991, of its intention to review the conditions of this resource consent for the following purposes:</p> <ul style="list-style-type: none"> (i) If necessary and appropriate, to require the holder of this resource consent to adopt the best practicable option to remove or reduce adverse effects on the receiving environment; and/or: (ii) To review the effectiveness of the conditions of this resource consent in avoiding or mitigating any adverse effects on the environment from the exercise of this resource consent and if necessary to avoid, remedy or mitigate such effects by way of further or amended conditions.

Schedule TWO: Land Boundary and Receptor Locations



- Land Boundary
- ★ Existing Dwellings