

# Changes to kerbside rubbish and recycling collection from 1 September 2023



Last year we adopted our Waste Management and Minimisation Plan | Tiakina a Papa! Mimiti te Para! The goal for the Plan is not only to minimise waste to landfill, but to work towards zero waste together as a district. Our new kerbside rubbish and recycling collection that starts on 1 September is designed to do just that.

## From 1 September 2023, here's what the kerbside collection service will look like:

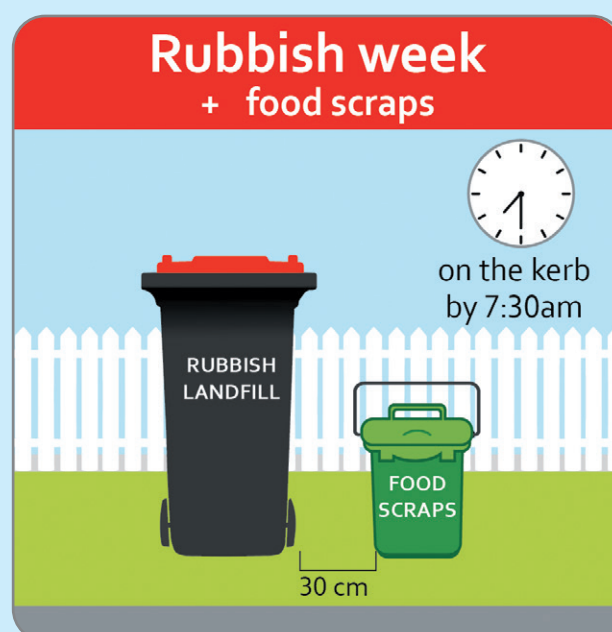
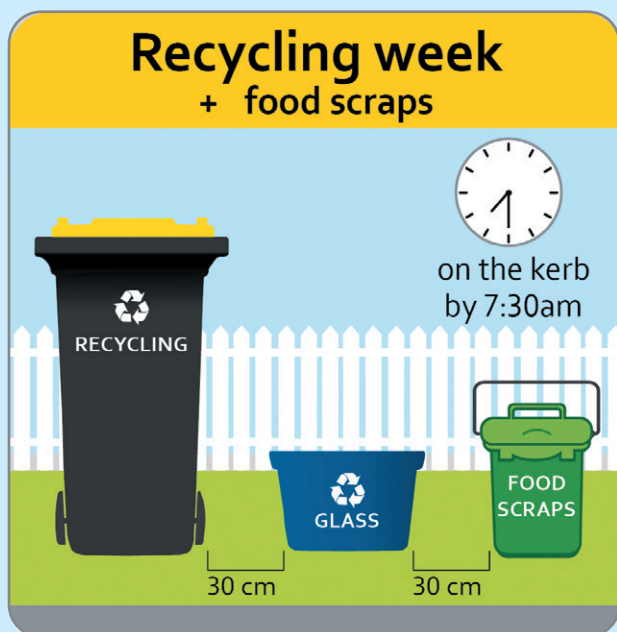
- A new **140L landfill bin**, (replacing the 60L pre-paid yellow rubbish bags<sup>1</sup>), collected fortnightly on a user pays (pay as you throw) basis
- A new **food scraps bin**<sup>2</sup>, collected weekly
- Mixed recycling, collected fortnightly, using the **current recycling wheelie bin**
- Glass recycling, collected fortnightly, using the **current crate**

The kerbside collections will be funded through the targeted refuse collection rate. The new landfill bin and food scraps bin will be delivered by August 2023 to each household that already receives the service. We'll communicate more about that, along with everything you need to know about the kerbside calendar and what goes into the bins, over the coming months. Check out the Frequently Asked Questions (FAQ's) about the new service on our website <https://www.hauraki-dc.govt.nz/rubbish-recycling/kerbside-collections>

<sup>1</sup> Yellow bags will not be collected from 1 September 2023, however, we'll accept yellow bags at the transfer stations up to the end of December 2023. Yellow bags will not be available for purchase from 1 September 2023.

<sup>2</sup> The new food scraps bins are being funded by Ministry for the Environment | Manatū Mō Te Taiao

The new service will *alternate each week between recycling week and rubbish week.*



## Did you know?

Every property in the district pays towards the running of the Waihi and Paeroa Refuse Transfer Stations (RTS). You can recycle free of charge at these sites. Only properties that receive a kerbside recycling service pay a targeted rate for kerbside collection.

## What's not happening by 1 September 2023?

Rural collections: We currently don't provide rural collections, but we'll look at extending our kerbside collection for rural communities in year two (2024/25) of the contract as we know there is a lot of interest in this.

## What else is new?

From 1 September 2023, we'll have a new recycling drop-off depot in Ngatea, where you can recycle your glass, paper, plastics 1, 2 and 5, cardboard, tin and aluminium cans and green waste.

We'll also be opening both our Refuse Transfer Stations from 9am – 5pm Wednesday to Sunday from 1 September.

# Recycling options in Hauraki District

*Sort it out  
before you  
put it out*

The mixed recycling and glass recycling collections will remain the same with the new kerbside collection contract starting on 1 September, so let's get it right now.

As a consumer of products you can help reduce waste by following the **6 R's** and using all recycling options available in the district, in addition to your kerbside recycling collection.

- **Refuse** to purchase what you don't need
- **Reduce** what you do need
- **Reuse** anything that you can
- **Recycle** what you cannot refuse, reduce or reuse
- **Rehome** what you no longer need or want
- **Regeneration** (i.e. compost) the rest

You'll be surprised how much you can divert from landfill by getting into these awesome recycling habits now.

## Recycling tips

### Rinse

Empty and rinse plastics, cans, tins, glass bottles and jars. Don't squash containers.

### Lids off

Remove lids and put in the rubbish bag.

### Wrap it

Wrap broken glass/china in paper before putting it in your rubbish bag.

### Did you know?

It's costly to dispose of dirty recycling.

That's because it gets rejected at the sorting facility and then gets allocated to landfill – so it's handled twice after collection.

**Clean recycling is the way to go.**

## Recycling clean soft plastics and liquid paperboard cartons (Tetra Pak™)

We've partnered with the Hauraki Repair and Reuse Centre, FuturePost, Tetra Pak™, SaveBoard and the local supermarkets to bring you these collections points. Ka pai!

Drop off locations	Soft plastics	Liquid paperboard (Tetra Pak™)	E-Waste (available in September)
Council service centres: Paeroa Ngatea and Waihi	✓	✓	
Refuse Transfer Stations: Paeroa and Waihi	✓	✓	✓
The Hauraki Repair and Reuse Centre, Paeroa	✓	✓	
Four Square, Ngatea; New World, Waihi; and Countdown, Paeroa	✓		



Find out more about soft plastics, liquid paperboard cartons and E-Waste at <https://www.hauraki-dc.govt.nz/rubbish-recycling/recycling>

Here's a reminder about what can go in your recycling wheelie bin and glass crate.

### Glass bottles and jars | Karaehe



Glass bottles and jars (clear, amber, blue and green glass only)

#### Don't overfill your crate

Our contractors will accept extra glass bottles but they must be in an official blue crate. These are available for \$15 dollars at any of our offices. Alternatively, our refuse transfer stations all accept recycling at no charge.

### Recycling | Hangarua



Aluminium + tin cans (cleaned)



Rigid plastics graded 1, 2 and 5 (cleaned)



Paper and flattened cardboard boxes (remove leftover pizza from pizza boxes)



## Recycling on the street

Ngatea, Paeroa and Waihi town centres all have recycling bins on trial for one year. These bins are not for household rubbish. Only unbroken bottles or glass jars, empty of food or liquid in the glass recycling please. An information sign is next to the bins explaining what can go in each bin.

Our Big Belly compacting bins have also had a make over to help them stand out on the street.

