

No time to waste

Tiakina a Papa! Mimiti te Para!



HAURAKI
DISTRICT COUNCIL

INTERESTING FACT

Plastic lids from milk bottles and fizzy drinks need to go in your landfill bin/bag.

Why? Although the lids are recyclable, loose lids can block the sorting equipment. Keeping the lids attached to the container doesn't work either, as the lid is a different plastic number to the bottle, and would need to be sorted separately. Also, remember to always rinse out your milk containers – sour milk is smelly!



Wash soft plastics while doing the dishes and hang them out to dry on the dish rack then pop them clean in the council collection bins! It'll save you heaps in disposal costs at kerbside.

Can we do recycling even better?

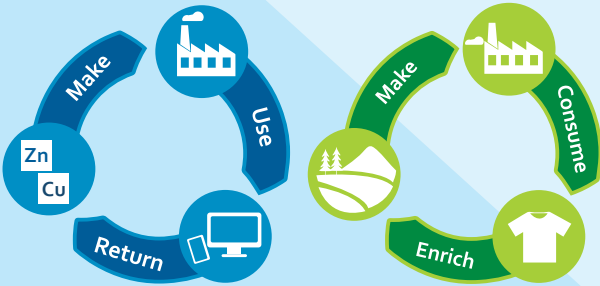
Yes we can! We've introduced soft plastics and liquid paper board collection bins around the district as those items can't go in your kerbside wheelie bin. You'll be amazed how much those items add up in your rubbish bin, so sort them out before you throw them out.

What are soft plastics?

- Bread bags and soft produce bags
- Frozen food bags
- Bags and wrappers for toilet paper, cereals, snack foods, and dairy products
- Lightly foiled bags e.g. chip packets and confectionery
- Courier packs and bubble wrap
- Garden potting mix bags
- Dry pet food bags

Going round in circles

That's the goal for a waste free society and our new kerbside collection service starting on 1 September 2023 is a big part of that goal! A circular waste economy means we keep resources in use for as long as possible. It's a big shift away from the wasteful 'take-make-dispose' system.



Technical materials

Biological materials

Why the change?

We can all help to do more to reduce the environmental harm, greenhouse gas emissions and economic loss that our current waste system creates, so new legislation is on its way.

Consistency counts!

From February 2024, councils across the country will only accept the same materials in their household mixed recycling collections and the good news is, you're already recycling the standardised items – paper, cardboard, plastics 1, 2 and 5, steel tins and aluminium cans and glass jars and bottles. Food scraps collections must be introduced nationally by 2030. We're starting ours on 1 September 2023.

Drop off locations	Soft plastics	Liquid paperboard (TetraPak™)	E-Waste (*available in September)
Council service centres: Paeroa, Ngatea and Waihi	✓	✓	
Refuse Transfer Stations: Paeroa and Waihi	✓	✓	* ✓
The Hauraki Repair and Reuse Centre, Paeroa	✓	✓	✓
Four Square, Ngatea and Paeroa; New World, Waihi; and Countdown, Paeroa	✓		



Find out more about soft plastics, liquid paperboard cartons and E-Waste at <https://www.hauraki-dc.govt.nz/rubbish-recycling/recycling>

Counting down to 1 September 2023

This is the biggest change to our kerbside collection service in ten years, so we'll be sure to cover every topic over the next four months. You'll also receive a handy flipchart with your bin delivery in August detailing everything you need to know about the bins, when they go out and what can go in them.

Check our website and sign up to our **In the Loop** newsletter and follow us on Facebook for regular updates.